

R6.160.4 T4i VRT

Section: H0 - HYDRAULIC AND PNEUMATIC SYSTEM|

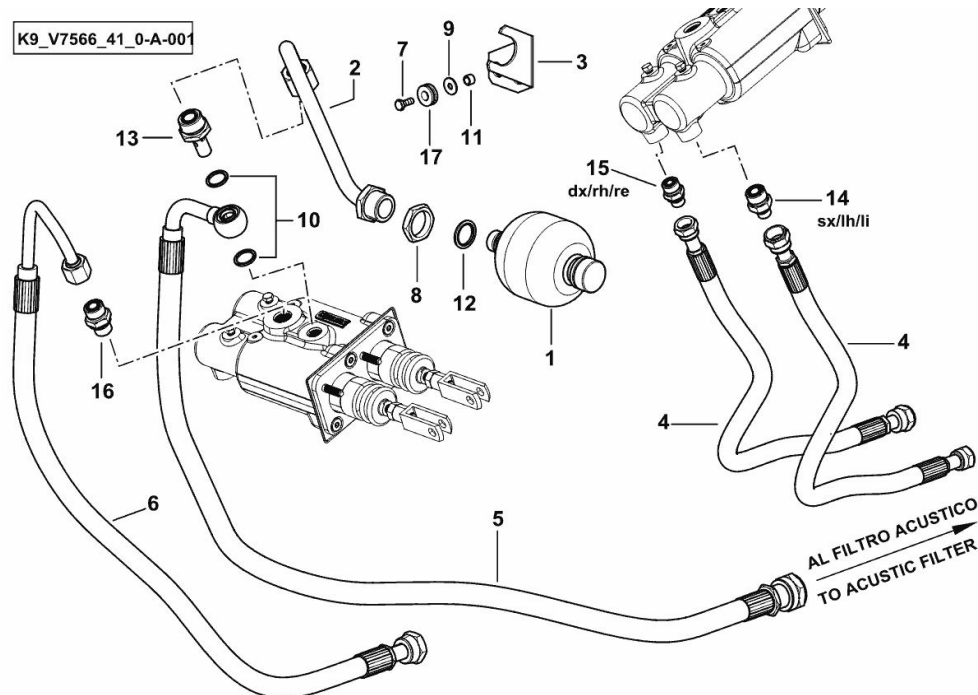
Ref: H0.09.0 (1)

BRAKING SYSTEM

Fig.	P/n	QTY	Name
------	-----	-----	------

Notes:

[R6.160.4 T4i VRT]



1	0.015.2357.0/10	1	accumulator
2	0.018.6820.3	1	tube
3	0.018.6894.2/10	1	bracket
4	0.019.4927.3/10	2	tube mm 640
5	0.019.4987.3/10	1	tube mm 1110
6	0.019.4988.3/10	1	tube
7	2.0112.005.2	2	screw m 6 p.1 x 16
8	2.1019.091.2	1	special nut m 30 p.1.5x8
9	2.1312.003.2	2	washer 6
10	2.1531.048.0	2	oil seal 18.72x2.62
11	2.1549.598.2	2	spacer 10x7x6.5
12	2.1561.012.0	1	gasket
13	2.3249.572.2	1	pipe fitting m14x1.5
14	2.3275.009.0	1	pipe fitting m 14
15	2.3275.005.0	1	pipe fitting m14x1.5
16	2.3275.011.0	1	pipe fitting m 18
17	2.6560.004.0	2	wire guide

R6.160.4 T4i VRT

Section: H0 - HYDRAULIC AND PNEUMATIC SYSTEM|

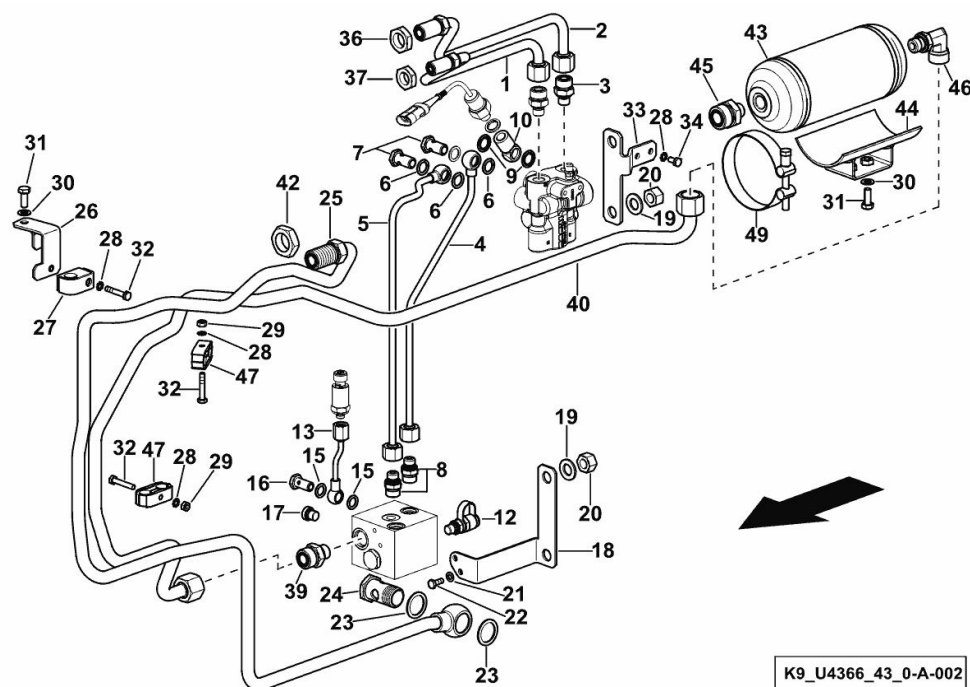
Ref: H0.09.1 (2)

BRAKING SYSTEM

Fig.	P/n	QTY	Name
------	-----	-----	------

Notes:

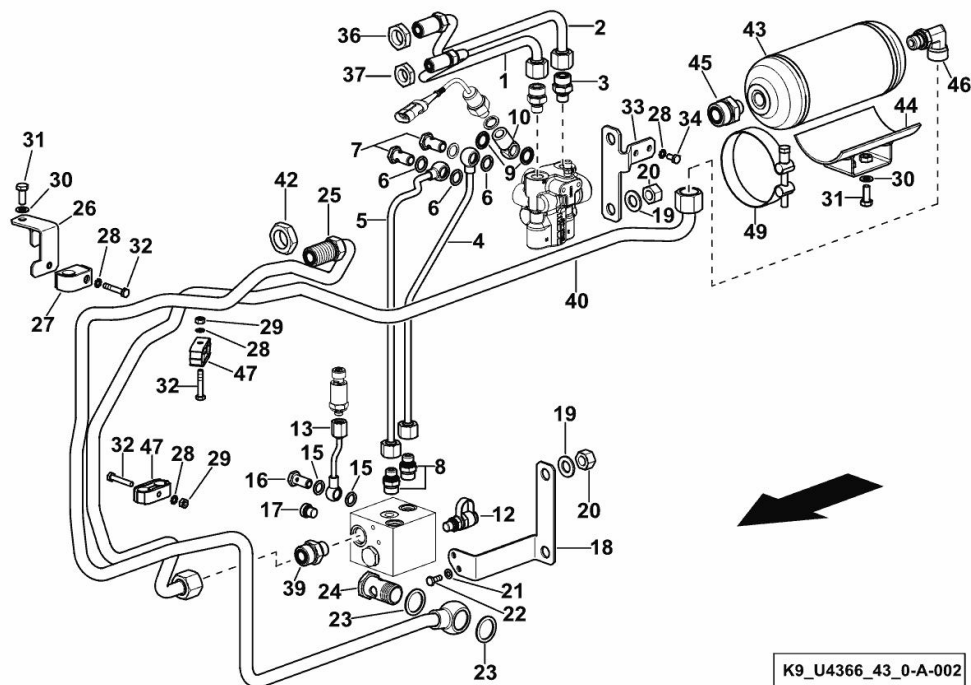
[R6.160.4 T4i VRT]



1	0.019.3648.3/10	1	tube
2	0.019.3647.3/20	1	tube
3	2.3249.313.2	2	pipe fitting m 14 p.1.5-13/16
4	0.019.3921.3	1	tube
5	0.019.3920.3	1	tube
6	2.1560.010.0	4	gasket 14.2 x 20
7	2.3335.006.2	2	pipe union m 14 p.1.5X26
8	2.3275.005.0	2	pipe fitting m14x1.5
9	2.1561.107.0	2	oil seal Ø 14 -B-
10	2.3249.402.2	1	pipe fitting
12	2.3729.696.0	1	socket
13	0.019.3922.3	1	tube
15	2.1560.008.0	2	gasket 12.2 x 18
16	2.3335.005.2	1	pipe union m 12 p.1.5 x 24
17	2.3139.024.2	1	plug m 12 p.1.5
18	0.019.4978.0	1	bracket
19	2.1475.005.2	4	washer 14
20	2.1011.408.2	4	nut m 14 p.1.5
21	2.1475.001.7	2	washer 6.4x12
22	2.0114.003.2	2	screw m 6 p.1 x 12
23	2.1569.068.0	2	gasket 26.3x34
24	2.3335.010.2	1	pipe union m 26x1.5
25	0.020.1822.3/10	1	tube
26	0.020.1913.3	1	bracket
27	2.3320.108.0	1	terminal
28	2.1470.002.2	5	lock washer 6
29	2.1011.103.2	2	nut m 6 p.1
30	2.1475.002.7	3	washer 8.4
31	2.0112.209.2	3	screw m 8 p 1.25 x 25
32	2.0112.013.2	3	screw m 6 p.1 x 35
33	0.019.5044.0	1	bracket
34	2.0112.003.2	2	screw m 6 p.1 x 12
36	2.1019.170.2	1	nut 13/16 "-16 UN-2B
37	2.1019.169.2	1	nut 11/16 "-16 UN-2B
39	2.3275.014.0	1	pipe fitting m 18
40	0.020.1336.3/10	1	tube
42	2.1019.168.2	1	nut
43	0.019.0172.0/10	1	vibration damper WEBER (50013 <-)
43	0.019.0172.0/20	1	vibration damper WEBER
44	0.019.0176.3	1	bracket
45	2.3249.737.2	1	pipe fitting

BRAKING SYSTEM

Fig.	P/n	QTY	Name
46	2.3273.007.0	1	pipe fitting
47	2.3321.020.0	2	collar Ø 16/16
49	0.164.8157.3/20	2	fascia Ø 97



R6.160.4 T4i VRT

Section: H0 - HYDRAULIC AND PNEUMATIC SYSTEM|

Ref: H0.09.2 (2)

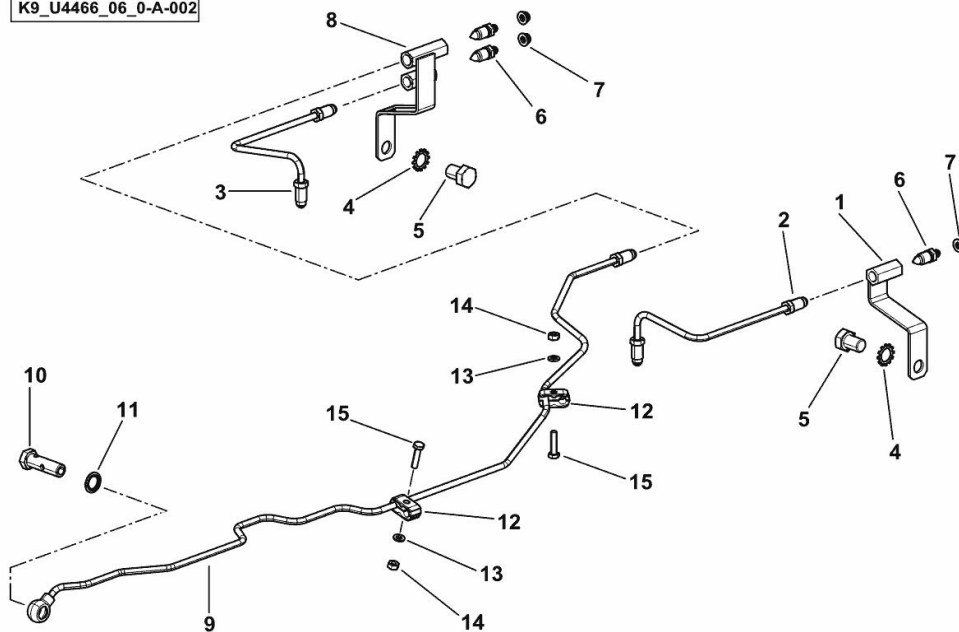
REAR BRAKES BLEED PIPES

Fig.	P/n	QTY	Name
------	-----	-----	------

Notes:

[R6.160.4 T4i VRT]

K9_U4466_06_0-A-002



1	0.011.9910.3	1	support
2	04451333	1	piping sx/lh/li
3	04451334	1	piping dx/rh/re
4	2.1470.008.2	2	lock washer 14
5	2.0112.507.2	2	screw m14x20
6	0.170.5455.0	3	valve
7	2.3199.039.0	3	plug
8	0.020.5892.3	1	bracket dx/rh/re
9	0.020.5894.3	1	tube dx/rh/re
10	2.3339.040.2	1	pipe union m 14 p.1.5x45
11	2.1561.107.0	1	oil seal Ø 14 -B-
12	2.3329.009.0	2	terminal Ø 6/8
13	2.1310.002.2	2	flat washer 6.4x12.5
14	2.1011.103.2	2	nut m 6 p.1
15	2.0112.009.2	2	screw m 6 p.1 x 25

R6.160.4 T4i VRT

Section: H0 - HYDRAULIC AND PNEUMATIC SYSTEM|

Ref: H0.09.3 (1)

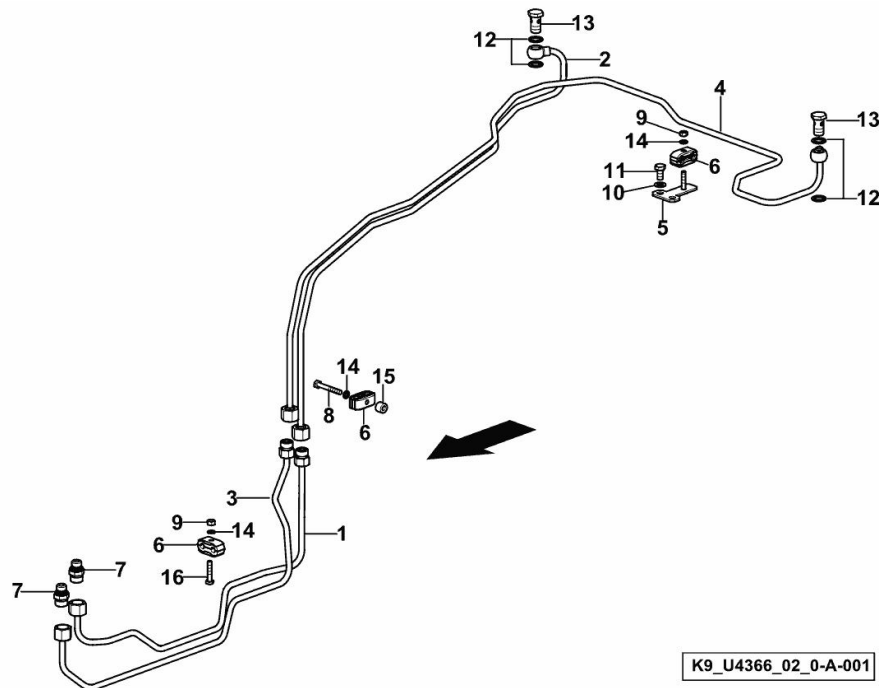
REAR BRAKING SYSTEM

Fig.	P/n	QTY	Name
------	-----	-----	------

Notes:

[R6.160.4 T4i VRT]

1	0.019.5040.3/10	1	tube dx/rh/re
2	0.019.5041.3	1	tube dx/rh/re
3	0.019.5037.3/10	1	tube sx/lh/li
4	0.019.5038.3	1	tube sx/lh/li
5	0.019.5042.3	1	bracket
6	2.3321.004.0	3	terminal Ø 8/8
7	2.3275.005.0	2	pipe fitting m14x1.5
8	2.0112.017.2	1	screw m 6 p.1x45
9	2.1011.103.2	2	nut m 6 p.1
10	2.1475.002.2	2	conical washer 8
11	2.0112.205.2	2	screw m 8 p.1.25 x 16
12	2.1560.010.0	4	gasket 14.2 x 20
13	2.3335.006.2	2	pipe union m 14 p.1.5X26
14	2.1470.002.2	3	lock washer 6
15	2.1579.452.6	1	spacer 6.5x14x10
16	2.0112.011.2	1	screw m 6 p.1x30

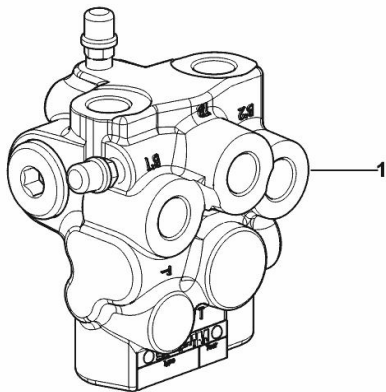


BRAKES CONTROL VALVE

Fig.	P/n	QTY	Name
------	-----	-----	------

Notes:
- FOR TYPES WITHOUT FRONT BRAKES [R6.160.4 T4i VRT]

1	2.3729.035.0	1	valve
---	--------------	---	-------

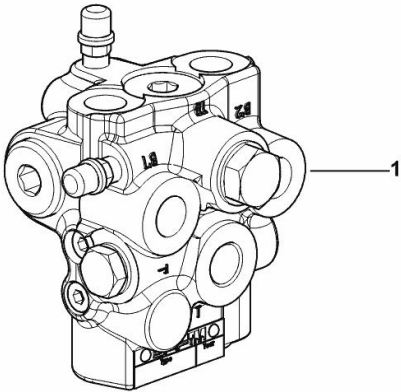


K9_U4366_10_0-A-001

Fig.	P/n	QTY	Name
------	-----	-----	------

Notes:
- FOR TYPES WITH FRONT BRAKES [R6.160.4 T4i VRT]

1	2.3729.728.0	1	valve
			 2.3729.728.0



K9_J5966_20_0-A-001



Our support email:

ebooklibonline@outlook.com