

Groundhog 4x4

[Section 1 - General Information](#)

[Section 2 - Care and Safety](#)

[Section 3 - Maintenance](#)

[Section A - Attachments](#)

[Section B - Body and Framework](#)

[Section C - Electrics](#)

[Section D - Controls](#)

[Section E - Hydraulics](#)

[Section F - Transmission](#)

[Section G - Brakes](#)

[Section H - Steering](#)

[Section K - Engine](#)

[Section S - Suspension](#)



Publication No.
9803/9820-2



Copyright © 2004 JCB SERVICE. All rights reserved. No part of this publication may be reproduced, stored in a retrieval system, or transmitted in any form or by any other means, electronic, mechanical, photocopying or otherwise, without prior permission from JCB SERVICE.



Notes:

General Information

Service Manual - Groundhog 4x4

[Section 1 - General Information](#)

[Section 2 - Care and Safety](#)

[Section 3 - Maintenance](#)

[Section A - Attachments](#)

[Section B - Body and Framework](#)

[Section C - Electrics](#)

[Section D - Controls](#)

[Section E - Hydraulics](#)

[Section F - Transmission](#)

[Section G - Brakes](#)

[Section H - Steering](#)

[Section K - Engine](#)

[Section S - Suspension](#)



Publication No.
9803/9820-1



Copyright © 2004 JCB SERVICE. All rights reserved. No part of this publication may be reproduced, stored in a retrieval system, or transmitted in any form or by any other means, electronic, mechanical, photocopying or otherwise, without prior permission from JCB SERVICE.



Notes:



Section 1 - General Information

Contents	Page No.
Introduction	
About this Publication	1-1
Machine Identification	
Identifying Your Machine	1-3
Consumables	
Sealing and Retaining Compounds	1-5
Service Tools	
Numerical List	1-7
Fastener Torque Chart	
Zinc Plated Fasteners and Dacromet Fasteners	1-9
Special Torques	1-13



Section 1 - General Information

Contents

Page No.

Introduction

About this Publication

This publication is designed for the benefit of JCB Distributor Service Engineers who are receiving, or have received, training by JCB Worldwide Training.

These personnel should have a sound knowledge of workshop practice, safety procedures, and general techniques associated with the maintenance and repair of hydraulic earth moving equipment.

Renewal of oil seals, gaskets, etc., and any component showing obvious signs of wear or damage is expected as a matter of course. It is also expected that components will be cleaned and lubricated where appropriate, and that any opened hose or pipe connections will be blanked to prevent excessive loss of hydraulic fluid and ingress of dirt. Finally, please remember above all else **SAFETY MUST COME FIRST!**

The manual is compiled in sections, the first three are numbered and contain information as follows:

- 1** General Information - includes torque settings and service tools.
- 2** Care and Safety - includes warnings and cautions pertinent to aspects of workshop procedures etc.
- 3** Routine Maintenance - includes service schedules and recommended lubricants for all the machine.

The remaining sections are alphabetically coded and deal with Dismantling, Overhaul etc. of specific components, for example:

- A** Attachments
- B** Body and Framework...etc.

Section contents, technical data, circuit descriptions, operation descriptions etc. are inserted at the beginning of each alphabetically coded section.

All sections are listed on the front cover; tabbed divider cards align directly with individual sections on the front cover for rapid reference.

'Left Hand' and 'Right Hand' are as viewed from the rear of the machine facing forwards.

This Service Manual covers the following machines:

Groundhog 4x4 from serial number 14440000 to 14446999.



Section 1 - General Information

Introduction

About this Publication

Page left intentionally blank

Machine Identification

Identifying Your Machine

Machine Identification Plates

Your machine has an identification plate, mounted as shown. → [Fig 1. \(□ 1-3\)](#).

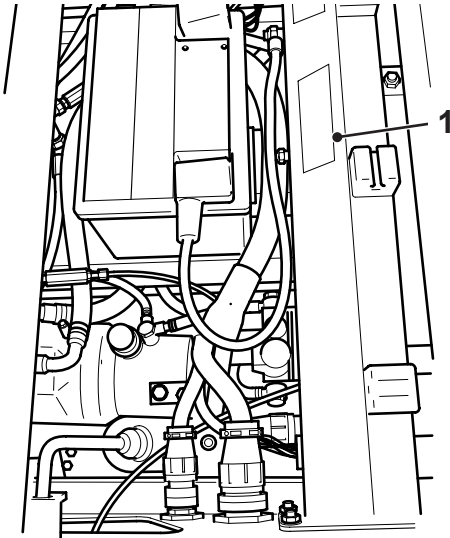
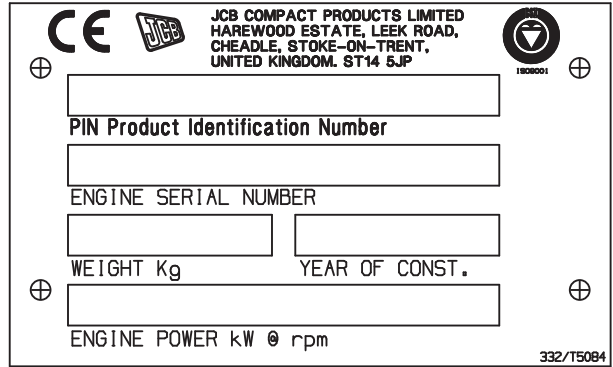


Fig 1.

V016790-1

The information contained on this plate is the Product identification number, Serial number, Weight in kg, Year of manufacture and Engine power in kw. → [Fig 2. \(□ 1-3\)](#).

The manufacturer's name and serial number are printed on the gearbox.

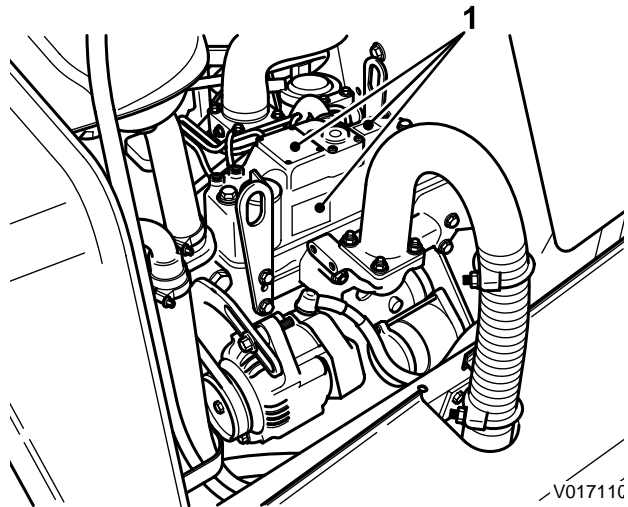


T021680

Fig 2.

Engine Identification Number Location

The engine serial number is shown on the plates 1 attached to the engine. → [Fig 3. \(□ 1-3\)](#).



V017110

V017110

Fig 3.



Section 1 - General Information Machine Identification

Identifying Your Machine

Page left intentionally blank

Consumables

Sealing and Retaining Compounds

T11-001_3

Table 1.

Type	Description	Part No.	Quantity
JCB Multi-Gasket	A medium strength sealant suitable for all sizes of gasket flanges, and for hydraulic fittings of 25-65 mm diameter.	4102/1212	50 ml
JCB High Strength Threadlocker	A high strength locking fluid for use with threaded components. Gasketing for all sizes of flange where the strength of the joint is important.	4102/0551	50 ml
JCB Retainer (High Strength)	For all retaining parts which are unlikely to be dismantled.	4101/0651	50 ml
JCB Threadlocker and Sealer	A medium strength locking fluid for sealing and retaining nuts, bolts, and screws up to 50 mm diameter, and for hydraulic fittings up to 25 mm diameter.	4101/0250	10 ml
		4101/0251	50 ml
JCB Threadlocker and Sealer (High Strength)	A high strength locking fluid for sealing and retaining nuts, bolts, and screws up to 50 mm diameter, and for hydraulic fittings up to 25 mm diameter.	4101/0550	10 ml
		4101/0552	200 ml
JCB Threadseal	A medium strength thread sealing compound.	4102/1951	50 ml
JCB Activator	A cleaning primer which speeds the curing rate of anaerobic products.	4104/0251	200 ml (Aerosol)
		4104/0253	1 ltr (Bottle)
JCB Cleaner/Degreaser	For degreasing components prior to use of anaerobic adhesives and sealants.	4104/1557	400 ml (Aerosol)
Direct Glazing Kit	For one pane of glass; comprises of: <ul style="list-style-type: none"> - 1 x Ultra Fast Adhesive (310 ml) - 1 x Active Wipe 205 (30 ml) - 1 x Black Primer 206J (30 ml) - plus applicator nozzle etc. 	993/55700	
Ultra Fast Adhesive	For direct glazing.	4103/2109	310 ml
Active Wipe 205	For direct glazing.	4104/1203	250 ml
Black Primer 206J	For direct glazing.	4201/4906	30 ml
Clear Silicone Sealant	To seal butt jointed glass.	4102/0901	
Plastic to Metal Bonder	To seal plastic to metal joints.	4103/0956	50 g
Black Polyurethane Sealant	To finish exposed edges of laminated glass.	4102/2309	310 ml



Section 1 - General Information

Consumables

Sealing and Retaining Compounds

Page left intentionally blank

Service Tools

Numerical List

The tools listed in the table are special tools required for carrying out the procedures described in this manual. These tools are available from JCB Service.

Some tools are available as kits or sets, the part numbers for parts within such kits or sets are not listed here. For full

details of all tools, including the content of kits and sets, see the relevant section in this manual.

Note: *Tools other than those listed will be required. It is expected that such general tools will be available in any well equipped workshop or be available locally from any good tool supplier.*

Part Number	Description	Tool Detail Reference - see Section:
-	AVO Test Kit - see tool detail reference for content	C
-	Electrical Repair Kit - see tool detail reference for content	C
993/85700	Battery Tester	C
332/T1130	CVT Puller Tool	F
-	Pressure Bleed Equipment	G
-	19 mm Socket	S
-	Spring Compressors	S



Section 1 - General Information

Service Tools

Numerical List

Page left intentionally blank

Buy Now



Our support email:

ebooklibonline@outlook.com