

Micro, Micro Plus, 8008, 8010

[Section 1 - General Information](#)

[Section 2 - Care and Safety](#)

[Section 3 - Routine Maintenance](#)

[Section A - Attachments](#)

[Section B - Body and Framework](#)

[Section C - Electrics](#)

[Section D - Controls](#)

[Section E - Hydraulics](#)

[Section F - Transmission](#)

[Section J - Tracks](#)

[Section K - Engine](#)



Publication No.
9803/9310-5



Copyright © 2004 JCB SERVICE. All rights reserved. No part of this publication may be reproduced, stored in a retrieval system, or transmitted in any form or by any other means, electronic, mechanical, photocopying or otherwise, without prior permission from JCB SERVICE.



Notes:

General Information

[Service Manual - Micro, Micro Plus, 8008, 8010](#)

[Section 1 - General Information](#)

[Section 2 - Care and Safety](#)

[Section 3 - Routine Maintenance](#)

[Section A - Attachments](#)

[Section B - Body and Framework](#)

[Section C - Electrics](#)

[Section D - Controls](#)

[Section E - Hydraulics](#)

[Section F - Transmission](#)

[Section J - Tracks](#)

[Section K - Engine](#)



Publication No.
9803-9310-5



Copyright © 2004 JCB SERVICE. All rights reserved. No part of this publication may be reproduced, stored in a retrieval system, or transmitted in any form or by any other means, electronic, mechanical, photocopying or otherwise, without prior permission from JCB SERVICE.



Section 1 - general Information

Notes:



Section 1 - General Information

Contents	Page No.
Introduction	
About this Manual	1-1
Machine Model and Serial Number	1-1
Using the Service Manual	1-1
Section Numbering	1-1
Left Side, Right Side	1-2
Cab/Canopy	1-2
Cross References	1-2
Introduction	
Identifying Your Machine	1-3
Machine Identification Plate	1-3
Component Identification Plates	1-4
Torque Settings	
Zinc Plated Fasteners and Dacromet Fasteners	1-5
Introduction	1-5
Bolts and Screws	1-5
Hydraulic Connections	1-9
'O' Ring Face Seal System	1-9
'Torque Stop' Hose System	1-12
Consumables	
Sealing and Retaining Compounds	1-13
Terms and Definitions	
Colour Coding	1-15
Hydraulic Schematic Colour Codes	1-15



Page left intentionally blank

Introduction

About this Manual

Machine Model and Serial Number

This manual provides information for the following model(s) in the JCB machine range:

- Micro from serial number M1148300
- Micro Tier 3 from serial number M1149553
- Micro Plus from serial number M1007000
- Micro Plus Tier 3 from serial number M1007129
- Micro 8008 from serial number M1239500
- Micro 8010 from serial number M1149553

Note: *The JCB Micro Excavator is available in a number of different TOPS, FOPS and roofing configuration. These different configurations are reflected in the illustrations used in this handbook.*

Using the Service Manual

T11-004

This publication is designed for the benefit of JCB Distributor Service Engineers who are receiving, or have received, training by JCB Technical Training Department.

These personnel should have a sound knowledge of workshop practice, safety procedures, and general techniques associated with the maintenance and repair of hydraulic earthmoving equipment.

The illustrations in this publication are for guidance only. Where the machines differ, the text and/or the illustration will specify.

General warnings in Section 2 are repeated throughout the manual, as well as specific warnings. Read all safety statements regularly, so you do not forget them.

Renewal of oil seals, gaskets, etc., and any component showing obvious signs of wear or damage is expected as a matter of course. It is expected that components will be cleaned and lubricated where appropriate, and that any opened hose or pipe connections will be blanked to prevent excessive loss of hydraulic fluid and ingress of dirt.

Where a torque setting is given as a single figure it may be varied by plus or minus 3%. Torque figures indicated are

for dry threads, hence for lubricated threads may be reduced by one third.

The manufacturer's policy is one of continuous improvement. The right to change the specification of the machine without notice is reserved. No responsibility will be accepted for discrepancies which may occur between specifications of the machine and the descriptions contained in this publication.

Finally, please remember above all else safety must come first!

Section Numbering

T11-005

The manual is compiled in sections, the first three are numbered and contain information as follows:

- 1 General Information - includes torque settings and service tools.
- 2 Care and Safety - includes warnings and cautions pertinent to aspects of workshop procedures etc.
- 3 Maintenance - includes service schedules and recommended lubricants for all the machine.

The remaining sections are alphabetically coded and deal with Dismantling, Overhaul etc. of specific components, for example:

- A Attachments
- B Body and Framework, etc.

Section contents, technical data, circuit descriptions, operation descriptions etc. are inserted at the beginning of each alphabetically coded section.

Left Side, Right Side

In this manual, 'left' **A** and 'right' **B** mean your left and right when you are seated correctly in the machine.

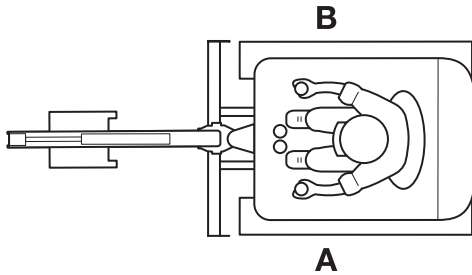


Fig 1.

731911-3

Cab/Canopy

T1-003_2

This manual frequently makes references to the cab. For instance, 'do not operate the machine without a manual in the cab'. It should be noted that these statements also apply to canopy build machines.

Cross References

T1-004_2

In this publication, page cross references are made by presenting the subject title printed in bold, italic and underlined. It is preceded by the 'go to' symbol. The number of the page upon which the subject begins, is indicated within the brackets. For example: [⇒ ***Cross References*** \(1-2\)](#).

Introduction

Identifying Your Machine

Machine Identification Plate

Your machine has an identification plate mounted as shown. The Product Identification Number (PIN), weight, engine power, year of manufacture and serial number of the machine are shown on the plate.

Note: The machine model and build specification is indicated by the PIN. Refer to **Typical Product Identification Number (PIN)**.

If the engine is replaced by a new one, the serial number on the identification plate will be wrong. Either get a replacement identification plate from your JCB Dealer or simply remove the old number. This will prevent the wrong unit number being quoted when replacement parts are ordered.

The machine and engine serial numbers can help identify exactly the type of equipment you have.

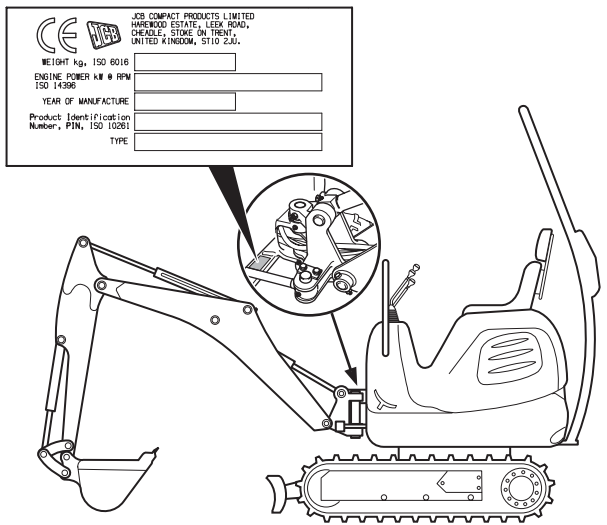


Fig 1.

T018860-2

Typical Vehicle identification number (VIN)

Code	A	B	C	D	E
Example	SLP	800	2	E	M1006000

A	World Manufacturer Identification	SLP = JCB
B	Machine Model	800 = 800
C	Year of Manufacture	
	R = 1994	X = 1999
	S = 1995	Y = 2000
	T = 1996	1 = 2001
	V = 1997	2 = 2002
	W = 1998	3 = 2003
		4 = 2004
		5 = 2005
		6 = 2006
		7 = 2007
		8 = 2008
D	Manufacturer's Location	
E	Machine Serial Number	M1006000

Typical Product Identification Number (PIN)

JCB	08008	C	01234567
1	2	3	4

1 World Manufacturer Identification (3 Digits)

JCB = UK Build

2 Machine Type and Model (5 Digits)

08008 = 8008

3 Check Letter (1 Digit)

The Check Letter is used to verify the authenticity of the machine's PIN.

4 Machine Serial Number (8 Digits)

Each machine has a unique serial number.

Component Identification Plates

Typical Engine Identification Number

The engine data label is located on the cylinder block as shown. The data label includes the engine identification number.

A typical engine identification number is:

GJ	U	65692	500405	P
1	2	3	4	5

1 Engine Type (2 Digits)

GH = Naturally aspirated, 9.0kW (12Hp)

GJ = Naturally aspirated, 13.8kW (18.5Hp)

2 Country of Manufacture (1 Digit)

U = United Kingdom

3 Build Number (5 Digits)

4 Engine Serial Number (6 Digits)

5 Year of Manufacture (1 Digit)

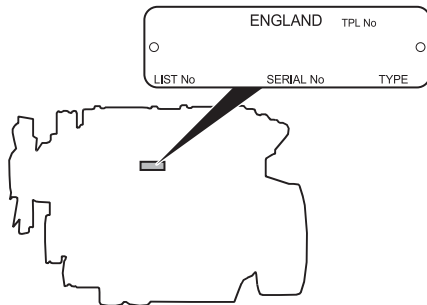


Fig 2.

T017650-2

ROPS/TOPS and FOGS Certification Plates

⚠ WARNING

Modified and wrongly repaired ROPS, TOPS & FOGS Structures are dangerous. Do not modify the TOPS Structure. Do not attempt to repair the ROPS, TOPS & FOGS Structure. If the ROPS, TOPS & FOGS Structure has been in an accident, do not use the machine until the structure has been inspected and repaired. This must be done by a qualified person. For assistance, contact your JCB dealer. Failure to take precautions could result in death or injury to the operator.

5-3-1-7_2

Machines built to ROPS and TOPS standards have an identification label attached to the machine.

→ [Fig 3.](#) (□ 1-4).

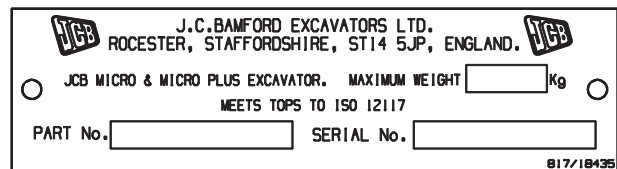


Fig 3.

449690

Buy Now



Our support email:

ebooklibonline@outlook.com