

## Midi CX Backhoe Loader

[Section 1 - General Information](#)

[Section 2 - Care and Safety](#)

[Section 3 - Maintenance](#)

[Section A - Attachments](#)

[Section B - Body and Framework](#)

[Section C - Electrics](#)

[Section D - Controls](#)

[Section E - Hydraulics](#)

[Section F - Transmission](#)

[Section G - Brakes](#)

[Section H - Steering](#)

[Section K - Engine](#)



Publication No.  
**9803/9400-08**



Copyright © 2004 JCB SERVICE. All rights reserved. No part of this publication may be reproduced, stored in a retrieval system, or transmitted in any form or by any other means, electronic, mechanical, photocopying or otherwise, without prior permission from JCB SERVICE.



## General Information

Service Manual - Midi CX Backhoe Loader

[Section 1 - General Information](#)

[Section 2 - Care and Safety](#)

[Section 3 - Maintenance](#)

[Section A - Attachments](#)

[Section B - Body and Framework](#)

[Section C - Electrics](#)

[Section D - Controls](#)

[Section E - Hydraulics](#)

[Section F - Transmission](#)

[Section G - Brakes](#)

[Section H - Steering](#)

[Section K - Engine](#)



Publication No.  
**9803/9400-08**



Copyright © 2004 JCB SERVICE. All rights reserved. No part of this publication may be reproduced, stored in a retrieval system, or transmitted in any form or by any other means, electronic, mechanical, photocopying or otherwise, without prior permission from JCB SERVICE.





# Section 1 - General Information

---

<b>Contents</b>	<b>Page No.</b>
<b>Introduction</b>	
About this Publication .....	1 - 1
Using the Service Manual .....	1 - 1
Section Numbering .....	1 - 1
Units of Measurement .....	1 - 1
Left Side, Right Side .....	1 - 2
Cab/Canopy .....	1 - 2
Cross References .....	1 - 2
Identifying the Machine .....	1 - 3
Machine Identification Plate .....	1 - 3
Component Identification Plates .....	1 - 4
Fuel .....	1 - 7
Types of Fuel .....	1 - 7
<b>Torque Settings</b>	
Zinc Plated Fasteners and Dacromet Fasteners .....	1 - 10
Introduction .....	1 - 10
Bolts and Screws .....	1 - 10
Hydraulic Connections .....	1 - 14
'O' Ring Face Seal System .....	1 - 14
'Torque Stop' Hose System .....	1 - 17
<b>Service Tools</b>	
Numerical List .....	1 - 18
<b>Service Aids</b>	
Sealing and Retaining Compounds .....	1 - 20
<b>Terms and Definitions</b>	
Colour Coding .....	1 - 21
Hydraulic Schematic Colour Codes .....	1 - 21



# Section 1 - General Information

---

Contents

Page No.

# Introduction

## About this Publication

### Using the Service Manual

T11-004

This publication is designed for the benefit of JCB Distributor Service Engineers who are receiving, or have received, training by JCB Technical Training Department.

These personnel should have a sound knowledge of workshop practice, safety procedures, and general techniques associated with the maintenance and repair of hydraulic earthmoving equipment.

The illustrations in this publication are for guidance only. Where the machines differ, the text and/or the illustration will specify.

General warnings in Section 2 are repeated throughout the manual, as well as specific warnings. Read all safety statements regularly, so you do not forget them.

Renewal of oil seals, gaskets, etc., and any component showing obvious signs of wear or damage is expected as a matter of course. It is expected that components will be cleaned and lubricated where appropriate, and that any opened hose or pipe connections will be blanked to prevent excessive loss of hydraulic fluid and ingress of dirt.

Where a torque setting is given as a single figure it may be varied by plus or minus 3%. Torque figures indicated are for dry threads, hence for lubricated threads may be reduced by one third.

The manufacturer's policy is one of continuous improvement. The right to change the specification of the machine without notice is reserved. No responsibility will be accepted for discrepancies which may occur between specifications of the machine and the descriptions contained in this publication.

Finally, please remember above all else safety must come first!

### Section Numbering

T11-005

The manual is compiled in sections, the first three are numbered and contain information as follows:

- 1 General Information - includes torque settings and service tools.
- 2 Care and Safety - includes warnings and cautions pertinent to aspects of workshop procedures etc.
- 3 Maintenance - includes service schedules and recommended lubricants for all the machine.

The remaining sections are alphabetically coded and deal with Dismantling, Overhaul etc. of specific components, for example:

- A Attachments
- B Body and Framework, etc.

Section contents, technical data, circuit descriptions, operation descriptions etc. are inserted at the beginning of each alphabetically coded section.

### Units of Measurement

T11-001\_2

In this publication, the S.I. system of units is used. For example, liquid capacities are given in litres. The Imperial units follow in parentheses ( ) eg 28 litres (6 gal).

### Left Side, Right Side

P2-1002

In this manual, 'left' **A** and 'right' **B** mean your left and right when you are seated correctly in the machine.

This is so whether you are facing the loader (front) or the backhoe (rear).

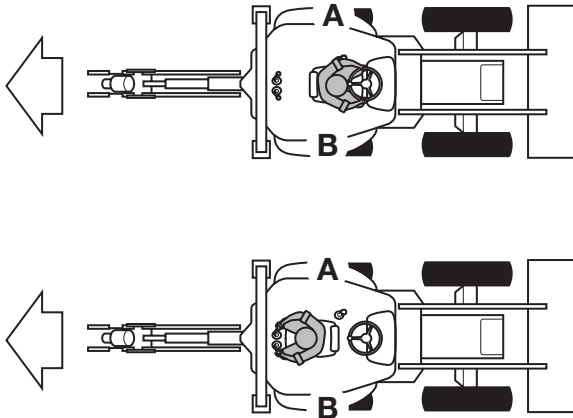


Fig 1.

C003690

### Cab/Canopy

T1-003\_2

This manual frequently makes references to the cab. For instance, 'do not operate the machine without a manual in the cab'. It should be noted that these statements also apply to canopy build machines.

### Cross References

T1-004\_2

In this publication, page cross references are made by presenting the subject title printed in bold, italic and underlined. It is preceded by the 'go to' symbol. The number of the page upon which the subject begins, is indicated within the brackets. For example: [⇒ \*\*\*Cross References\*\*\* \(1-2\)](#).



### Identifying the Machine

#### Machine Identification Plate

The machine has an identification plate mounted on the loader tower. The serial numbers of the machine and its major units are stamped on the plate.

The serial number of each major unit is also stamped on the unit itself. If a major unit is replaced by a new one, the serial number on the identification plate will be wrong. Either stamp the new number of the unit on the identification plate, or simply stamp out the old number. This will prevent the wrong unit number being quoted when replacement parts are ordered.

The machine and engine serial numbers can help identify exactly the type of equipment you have.

#### Typical Vehicle Identification Number (VIN)

SLP	Midi	T	S	6	E	972021
1	2	3	4	5	6	7

- 1 World Manufacturer Identification (SLP = JCB)
- 2 Machine Model
- 3 Steer Type (T= 2WS, F= 4WS)
- 4 Build Type (S=Sideshift, C=Centremount, L=Loader)
- 5 Year of Manufacture:
  - 6 = 2006
  - 7 = 2007
  - 8 = 2008
  - 9 = 2009
- 6 Manufacturer Location (E = England)
- 7 Machine Serial Number

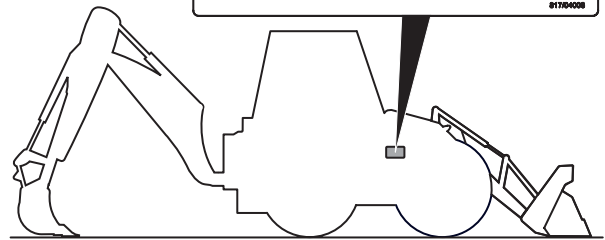
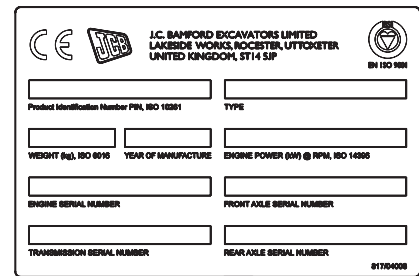


Fig 2.

T025210-1

#### Typical Product Identification Number (PIN)

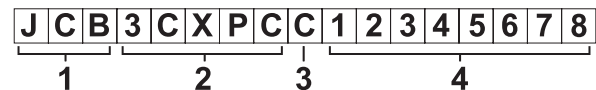


Fig 3.

P2-1006

T016220-8

- 1 World Manufacturer Identification (3 Digits)
- 2 Machine Model (5 Digits)
- 3 Check Letter (1 Digit)
- 4 Machine Serial Number (8 Digits)

The Check Letter is used to verify the authenticity of a machine's PIN.

Each machine has a unique serial number.

**Buy Now**



Our support email:

[ebooklibonline@outlook.com](mailto:ebooklibonline@outlook.com)