

TM310

[Section 1 - General Information](#)

[Section 2 - Care and Safety](#)

[Section 3 - Routine Maintenance](#)

[Section B - Body and Framework](#)

[Section C - Electrics](#)

[Section E - Hydraulics](#)

[Section F - Transmission](#)

[Section G - Brakes](#)

[Section H - Steering](#)

[Section K - Engine](#)

[Section M - Network Systems](#)



Publication No.
9803/9520-06



Copyright © 2004 JCB SERVICE. All rights reserved. No part of this publication may be reproduced, stored in a retrieval system, or transmitted in any form or by any other means, electronic, mechanical, photocopying or otherwise, without prior permission from JCB SERVICE.



Notes:

General Information

Service Manual - TM310

[Section 1 - General Information](#)

[Section 2 - Care and Safety](#)

[Section 3 - Routine Maintenance](#)

[Section B - Body and Framework](#)

[Section C - Electrics](#)

[Section E - Hydraulics](#)

[Section F - Transmission](#)

[Section G - Brakes](#)

[Section H - Steering](#)

[Section K - Engine](#)

[Section M - Network Systems](#)



Publication No.
9803/9520-03



Copyright © 2004 JCB SERVICE. All rights reserved. No part of this publication may be reproduced, stored in a retrieval system, or transmitted in any form or by any other means, electronic, mechanical, photocopying or otherwise, without prior permission from JCB SERVICE.



Section 1 - General Information

Contents	Page No.
Introduction	
About this Publication	1 - 1
Schematic Codes	1 - 2
Colour Codes	1 - 2
Machine Identification	
Machine Identification Plate	1 - 3
Data Plate	1 - 3
Typical Vehicle Identification Number (VIN)	1 - 3
Torque Settings	
Zinc Plated Fasteners and Dacromet Fasteners	1 - 6
Introduction	1 - 6
Bolts and Screws	1 - 6
Hydraulic Connections	1 - 10
'O' Ring Face Seal System	1 - 10
'Torque Stop' Hose System	1 - 13
Service Tools	
Numerical List	1 - 14
Tool Detail Reference	1 - 17
Service Aids	
Sealing and Retaining Compounds	1 - 35



Section 1 - General Information

Contents

Page No.

Introduction

About this Publication

This publication is designed for the benefit of JCB Distributor Service Engineers who are receiving, or have received, training by JCB Technical Training Department.

'Left Hand' and 'Right Hand' are as viewed from the rear of the machine facing forwards.

These personnel should have a sound knowledge of workshop practice, safety procedures, and general techniques associated with the maintenance and repair of hydraulic earthmoving equipment.

Renewal of oil seals, gaskets, etc., and any component showing obvious signs of wear or damage is expected as a matter of course. It is expected that components will be cleaned and lubricated where appropriate, and that any opened hose or pipe connections will be blanked to prevent excessive loss of hydraulic fluid and ingress of dirt. Finally, please remember above all else **SAFETY MUST COME FIRST!**

The manual is compiled in sections, the first three are numbered and contain information as follows:

- 1 General Information - includes torque settings and service tools.
- 2 Care & Safety - includes warnings and cautions pertinent to aspects of workshop procedures etc.
- 3 Routine Maintenance - includes service schedules and recommended lubricants for all the machine.

The remaining sections are alphabetically coded and deal with Dismantling, Overhaul etc. of specific components, for example:

- A** Attachments
- B** Body and Framework...etc.








Section contents, technical data, circuit descriptions, operation descriptions etc. are inserted at the beginning of each alphabetically coded section. All sections are listed on the front cover.

Where a torque setting is given as a single figure it may be varied by plus or minus 3%. Torque figures indicated are for dry threads, hence for lubricated threads may be reduced by one third.

Schematic Codes

Colour Codes

The following colour coding, used on illustrations to denote various conditions of oil pressure and flow, is standardised throughout JCB Service Publications.

	Red	Full Pressure: Pressure generated from operation of a service. Depending on application this may be anything between neutral circuit pressure and MRV operating pressure.
	Pink	Pressure: Pressure that is above neutral circuit pressure but lower than that denoted by Red.
	Orange	Servo: Oil pressure used in controlling a device (servo).
	Blue	Neural: Neutral circuit pressure.
	Green	Exhaust:
	Light Green	Cavitation: Oil subjected to a partial vacuum due to a drop in pressure (cavitation).
	Yellow	Lock Up: Oil trapped within a chamber or line, preventing movement of components (lock up).

Machine Identification

Machine Identification Plate

Data Plate

Your machine has a Data Plate, located as shown at T. The serial numbers of the machine, engine and transmission unit are stamped on the plate.

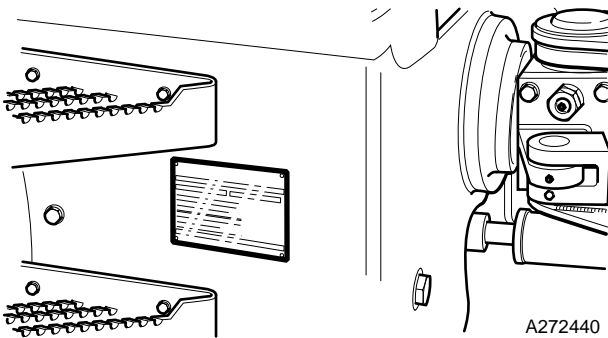


Fig 1.

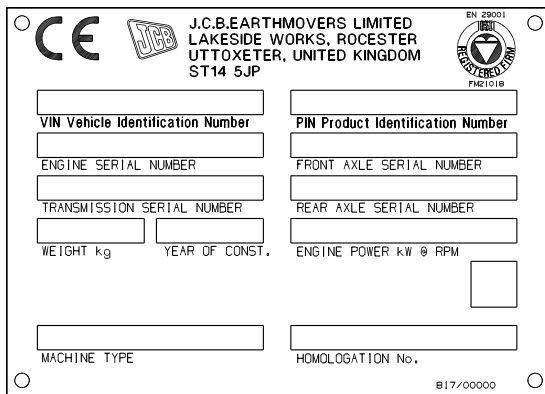


Fig 2.

Typical Vehicle Identification Number (VIN)

1	2	3	4	5
SLP	TM310	3	E	1314700

- 1 World Manufacturer Identification (SLP = JCB)
- 2 Machine Type (TM310, TM-W)
- 3 Year of Manufacture (1 = 2001, 2 = 2002, 3 = 2003, 4 = 2004, 5 = 2005, 6 = 2006, 7 = 2007)
- 4 Manufacturers Location (E = England)
- 5 Machine Serial Number (1314700)

Typical Engine Identification Number

T1-005_2

Engine data labels **A** are located on the cylinder block at position **C** and rocker cover **D** (if fitted). → Fig 3. (□ 1-4). The data label contains important engine information and includes the engine identification number **E**.

A typical engine identification number is explained as follows:

SA	320/40001	U	00001	04
1	2	3	4	5

1 Engine Type

S = 4.4 litre series.

A = Naturally aspirated.

B = Turbocharged.

C = Turbocharged and intercooled.

E = Electronic common rail fuel injection.

2 Engine part number

Buy Now



Our support email:

ebooklibonline@outlook.com