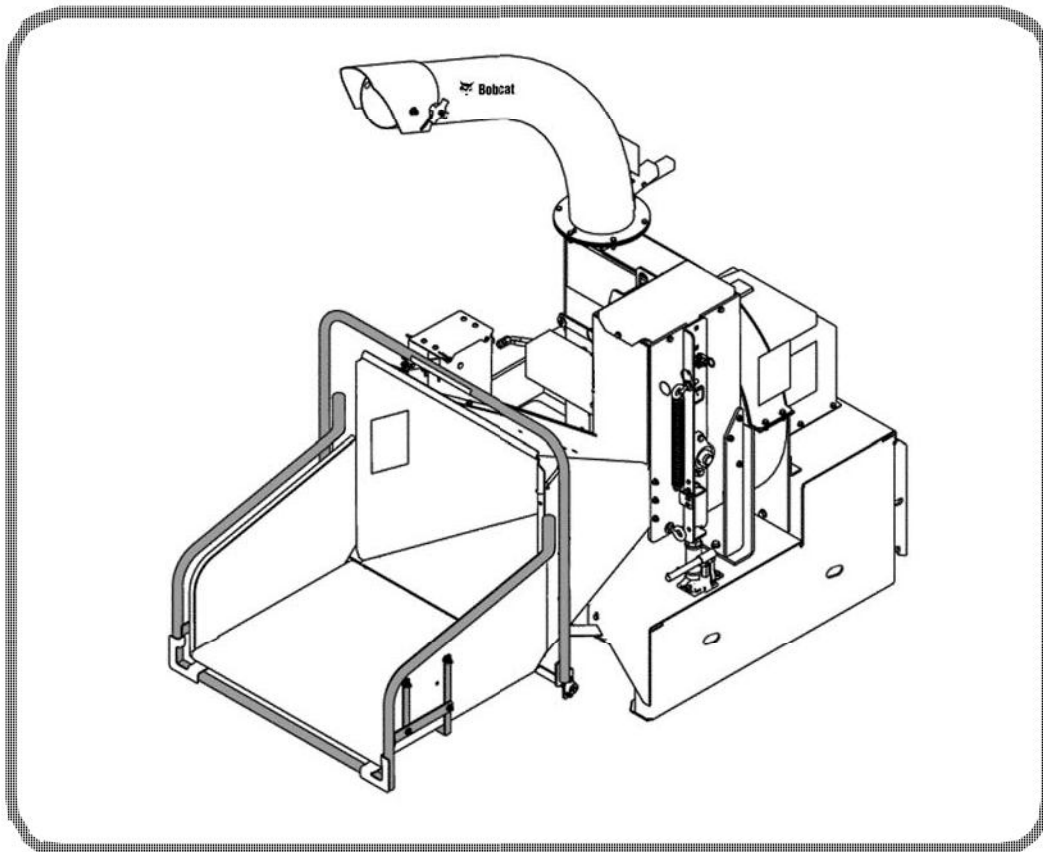




# Bobcat®

## Service Manual Chipper

(WC-5A Chipper) S/N 912900101 & Above  
(WC-8A Chipper) S/N 739500101 & Above  
(WC-8B Chipper) S/N A02B00101 & Above



Dealer Copy -- Not for Resale



# MAINTENANCE SAFETY



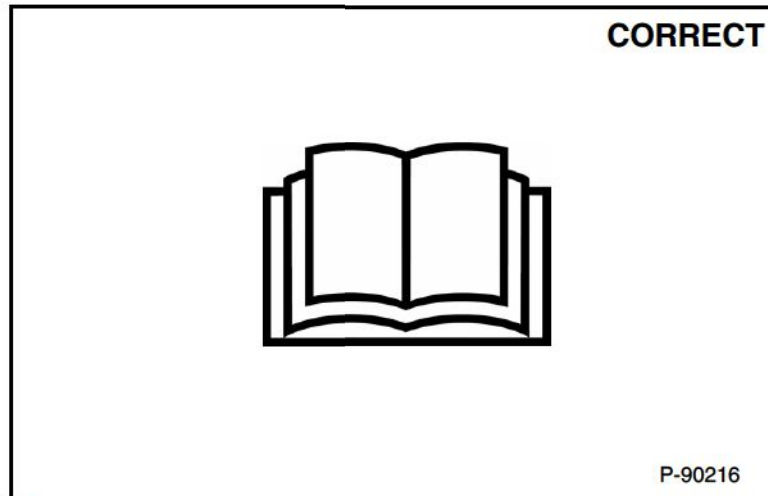
## WARNING









Instructions are necessary before operating or servicing machine. Read and understand the Operation & Maintenance Manual, Operator's Handbook and signs (decals) on machine. Follow warnings and instructions in the manuals when making repairs, adjustments or servicing. Check for correct function after adjustments, repairs or service. Untrained operators and failure to follow instructions can cause injury or death.

W-2003-0807



**Safety Alert Symbol:** This symbol with a warning statement, means: "Warning, be alert! Your safety is involved!" Carefully read the message that follows.



-  **Never service attachments / implements without instructions. See Operation & Maintenance Manual and Attachment / Implement Service Manual.**
-  **Cleaning and maintenance are required daily.**
-  **Never service or adjust attachment / implement with the engine running unless instructed to do so in manual.**
-  **Always lower the attachment / implement to the ground before lubricating or servicing.**
-  **Avoid contact with leaking hydraulic fluid or diesel fuel under pressure. It can penetrate skin or eyes.**
-  **Stop, cool and clean engine of flammable materials before checking fluids.**
-  **Keep body, loose objects and clothing away from moving parts, electrical contacts, hot parts and exhaust.**
-  **Safety glasses are needed for eye protection from electrical arcs, battery acid, compressed springs, fluids under pressure and flying debris or when tools are used. Use eye protection approved for type of welding.**

Dealer Copy -- Not for Resale

MSW30-0409

## CONTENTS

SAFETY AND MAINTENANCE .....	10-01
HYDRAULIC SYSTEM .....	20-01
MAINFRAME .....	30-01
SPECIFICATIONS .....	SPEC-01
ALPHABETICAL INDEX .....	INDEX-01

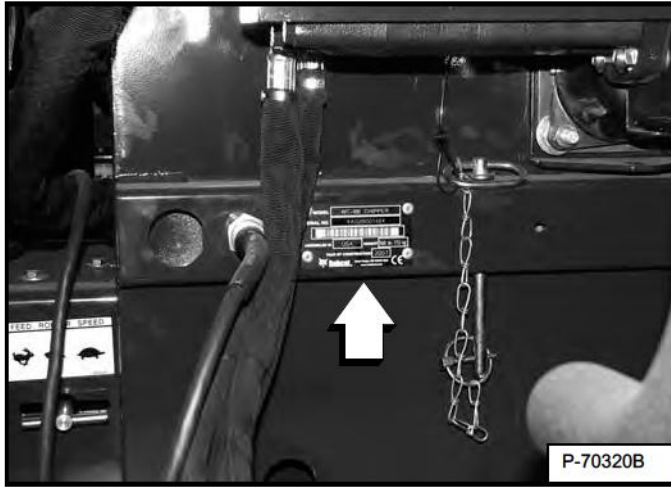
## FOREWORD

SERIAL NUMBER LOCATION .....	1-7
Attachment Serial Number .....	1-7
DELIVERY REPORT .....	1-7
MANUAL STORAGE LOCATION .....	1-7
ATTACHMENT IDENTIFICATION .....	1-8

## SERIAL NUMBER LOCATION

### Attachment Serial Number

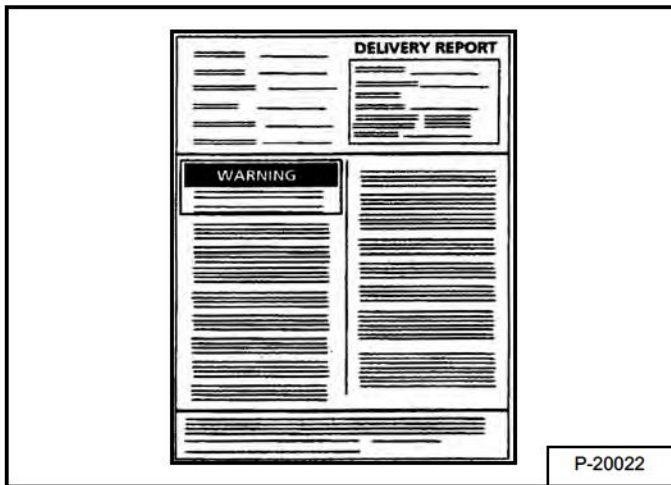
Figure 1



Always use the serial number [Figure 1] of the chipper when requesting service information or when ordering parts. Early or later models (identification made by serial number) may use different parts, or it may be necessary to use a different procedure in doing a specific service operation.

## DELIVERY REPORT

Figure 2

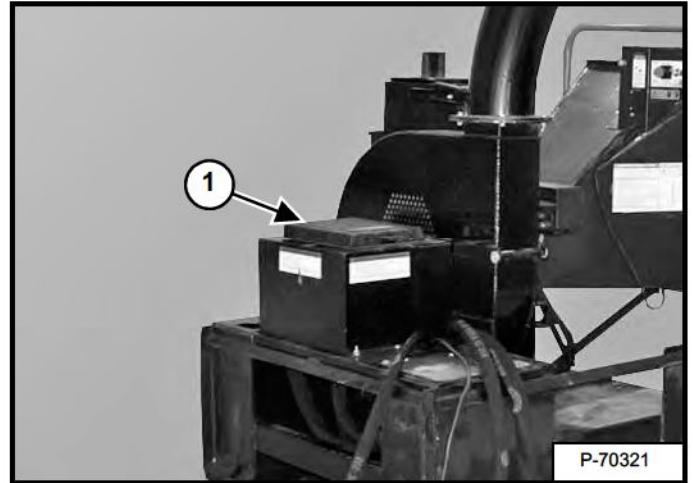


The delivery report [Figure 2] must be completed by the dealer and signed by the owner or operator when the chipper is delivered. An explanation of the form must be given to the owner.

## MANUAL STORAGE LOCATION

Read and understand the Operation & Maintenance Manual before operating the chipper.

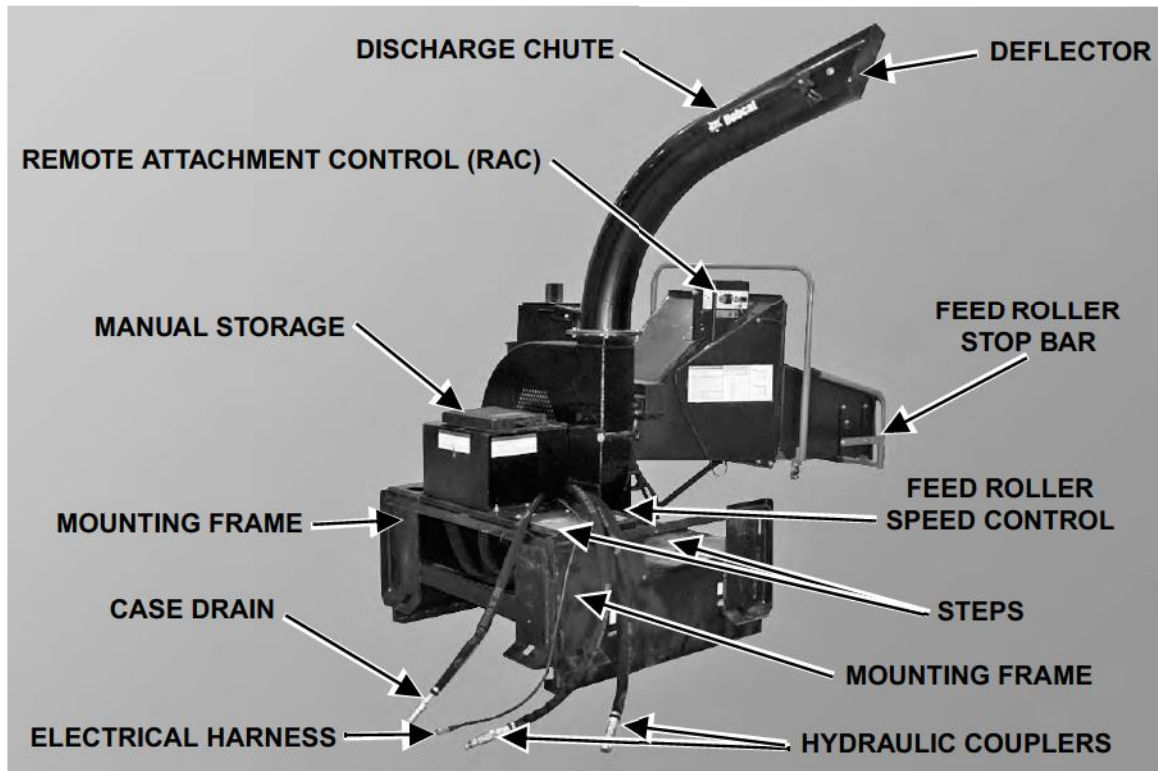
Figure 3



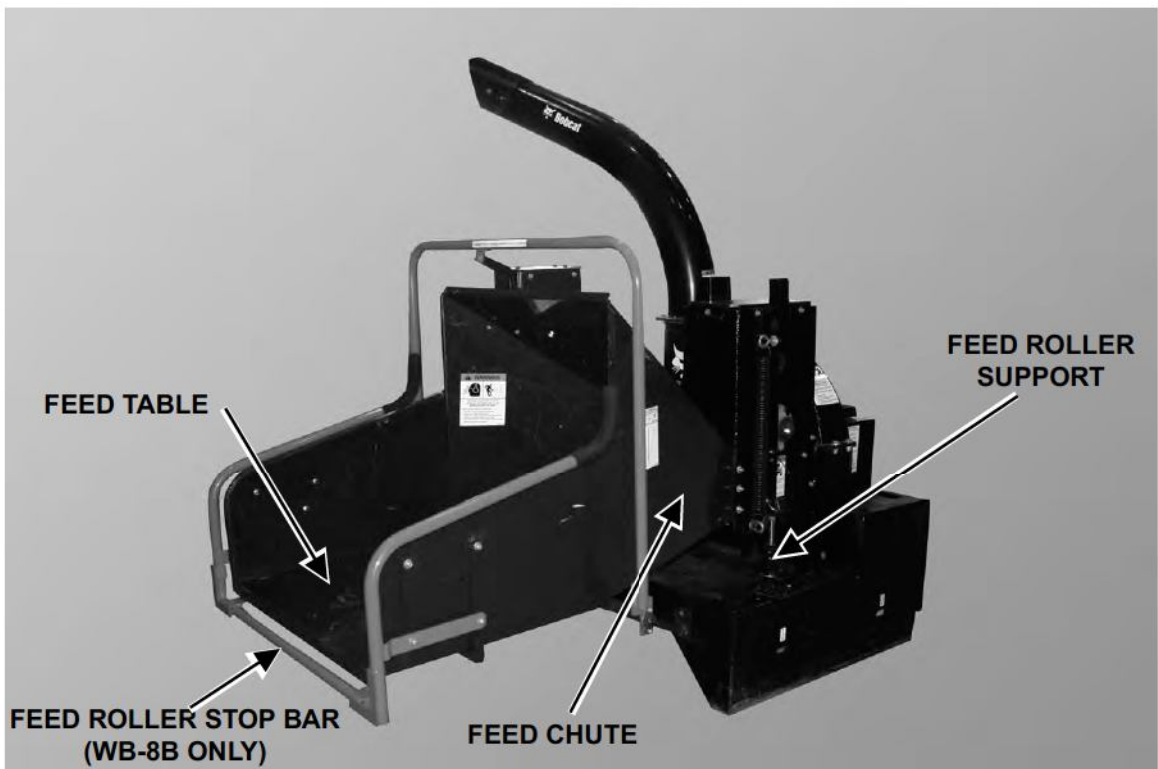
The Operation & Maintenance Manual and Safety Manual(s) are stored in a container (Item 1) [Figure 3] located on the chipper.

Dealer Copy -- Not for Resale

**ATTACHMENT IDENTIFICATION**



P-70321



P-70322

Dealer Copy -- Not for Resale


## SAFETY AND MAINTENANCE

TROUBLESHOOTING .....	10-10-1
Chart .....	10-10-1
DAILY INSPECTION .....	10-20-1
Attachment Mounting Frame .....	10-20-1
Feed Roller Stop Bar Activation Point (WC-8B only) .....	10-20-1
Bob-Tach .....	10-20-2
LUBRICATION .....	10-30-1
Lubrication Locations .....	10-30-1
SERVICE SCHEDULE .....	10-40-1
Chart (WC-5A And WC-8A Chipper) .....	10-40-1
Chart (WC-8B Chipper) .....	10-40-2
CHIPPER BLADES .....	10-50-1
Setting Chipper Blade Clearance .....	10-50-1
Sharpening The Chipper Blades .....	10-50-3
ATTACHMENT STORAGE AND RETURN TO SERVICE .....	10-60-1
Storage .....	10-60-1
Return To Service .....	10-60-1
FEED ROLLER SUPPORT .....	10-70-1
Procedure .....	10-70-1
FEED ROLLER STOP BAR ACTIVATION POINT (WC-8B ONLY) .....	10-80-1
Description .....	10-80-1
Adjustment .....	10-80-1

Dealer Copy -- Not for Resale

## TROUBLESHOOTING

### Chart

 <b style="font-size: 24px; margin-left: 10px;">WARNING</b>	<p>Instructions are necessary before operating or servicing machine. Read and understand the Operation &amp; Maintenance Manual, Operator's Handbook and signs (decals) on machine. Follow warnings and instructions in the manuals when making repairs, adjustments or servicing. Check for correct function after adjustments, repairs or service. Untrained operators and failure to follow instructions can cause injury or death.</p> <p style="text-align: right; font-size: 10px;">W-2003-0807</p>
--	---

If the chipper is not working correctly, check the hydraulic system of the machine thoroughly before making any repairs on the chipper. Chipper problems can be affected by a hydraulic system that is not operating to specifications. Connect a flow meter to the machine to check the hydraulic pump output, relief valve setting and tube lines to check flow and pressure. (See the machine's Service Manual for the correct procedure to connect the flow meter.)

Use the following troubleshooting chart to locate and correct problems which most often occur with the attachment.

TROUBLESHOOTING THE CHIPPER		
PROBLEM	CAUSE	CORRECTION
Chipper does not seat properly on the Bob-Tach™.	Bob-Tach wedges are not fully retracted.	Retract Bob-Tach wedges.
	Mud, dirt or stones are lodged between the Bob-Tach and the Chipper.	Remove debris between Bob-Tach and Chipper.
Loader will not start with Chipper removed. (Early models only.)	Connector not installed on remote attachment control harness on the loader lift arm.	Install connector on wire harness.
Loader will not start with loader key switch with Chipper installed.	Engine stop switch on Remote Attachment Control engaged.	Turn the engine stop switch clockwise to release the switch.
	Key switch on Remote Attachment Control in the run position.	Turn the key switch to the OFF position.
Loader will not start with the Remote Attachment Control key switch.	Engine stop switch on Remote Attachment Control engaged.	Turn the engine stop switch clockwise to release the switch.
	Loader key switch in the run position.	Turn the loader key switch to the OFF position.
Chipper does not turn.	No hydraulic flow.	Check quick couplers connection. Check for damaged hose ends and fittings.
		Press RAC attachment ON switch.
Chipper vibrates excessively.	Chipper not correctly attached to Bob-Tach.	Check for correct mounting of the Chipper to the Bob-Tach.
	Damaged Chipper blades.	Replace damaged blades.
Chipper hard to feed.	Plugged discharge chute.	Clear discharge chute.
	Dull Chipper blades.	Sharpen blades.
	Damaged Chipper blades.	Replace damaged blades.
	Improper blade clearance.	Adjust clearance.
Feed roller does not engage.	Low hydraulic flow due to low engine RPM.	Move loader engine speed control lever to high engine RPM position.

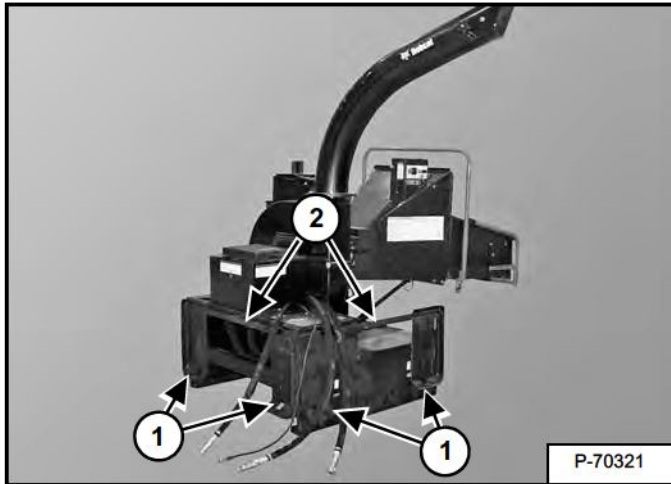
Dealer Copy -- Not for Resale



## DAILY INSPECTION

### Attachment Mounting Frame

Figure 10-20-1

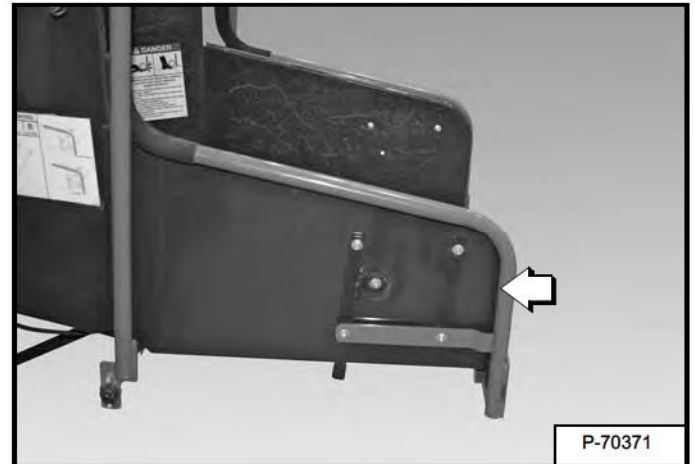


Inspect the Bob-Tach wedge mount (Item 1), mounting flange (Item 2) [Figure 10-20-1] and all welds on the chipper mount for wear and damage each time the chipper is removed from the loader.

### Feed Roller Stop Bar Activation Point (WC-8B only)

Start the chipper and engage the feed roller in the forward direction.

Figure 10-20-2



Fully press the feed roller stop bar to the “ENGAGED” Position [Figure 10-20-2]. The feed roller must stop turning when the feed roller stop bar is pressed to the activation point. (See FEED ROLLER STOP BAR ACTIVATION POINT (WC-8B ONLY) on Page 1.) for information on adjusting the feed roller stop bar activation point.

Release the feed roller stop bar. The feed roller must remain stopped.

Move the feed roller control to the Reverse position. The feed roller should turn in the reverse direction.

Move the feed roller control to the Forward position and press the feed roller reset / override button. The feed roller should resume turning in the forward direction.

If the feed roller does not function as described, see your Bobcat dealer for repair.

## **WARNING**

- Never operate without the feed roller stop bar.
- Never modify the feed roller stop bar and check that it is operating properly.

W-2539-1106

Dealer Copy -- Not for Resale

## DAILY INSPECTION (CONT'D)

### Bob-Tach

#### Hand Lever Bob-Tach

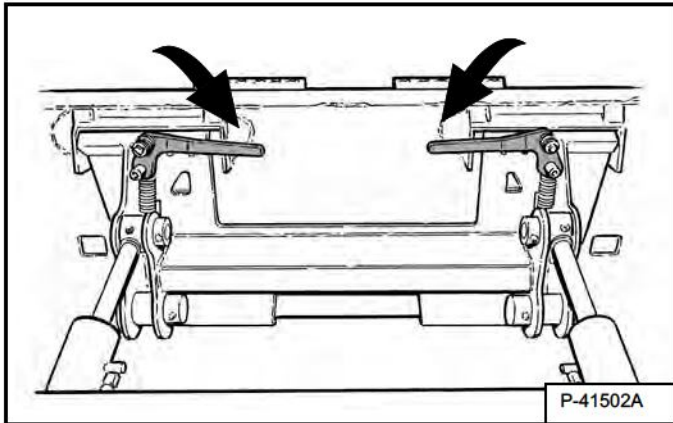
# ! WARNING

### AVOID INJURY OR DEATH

The Bob-Tach wedges must extend through the holes in the attachment mounting frame. Levers must be fully down and locked. Failure to secure wedges can allow attachment to come off.

W-2715-0208

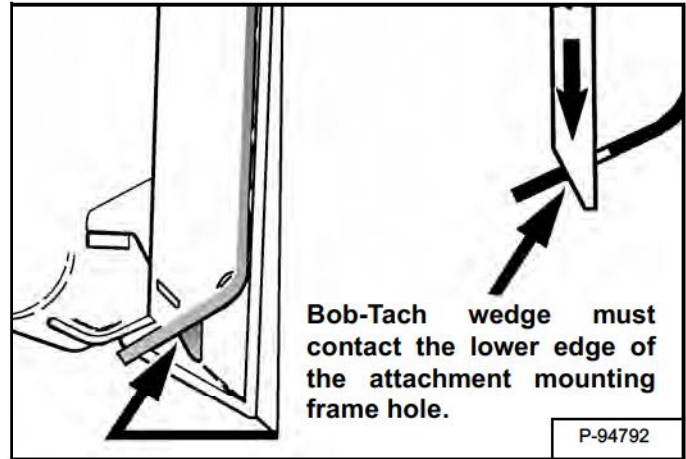
Figure 10-20-3



Push down on the Bob-Tach levers until they are fully engaged in the locked position [Figure 10-20-3] (wedges fully extended through the attachment mounting frame holes).

The levers and wedges must move freely [Figure 10-20-3].

Figure 10-20-4



Bob-Tach wedge must contact the lower edge of the attachment mounting frame hole.

The wedges must extend through the holes in the attachment mounting frame, securely fastening the attachment to the Bob-Tach [Figure 10-20-4].

**NOTE:** If the wedge does not contact the lower edge of the hole, the attachment will be loose and can come off the Bob-Tach.

Inspect the mounting frame on the attachment. (See the machine's Operation & Maintenance Manual for inspecting the Bob-Tach). Replace any parts that are damaged, bent or missing. Keep all fasteners tight. Look for cracked welds. Contact your Bobcat dealer for repair or replacement parts.

Lubricate the wedges. (See the machine's Operation & Maintenance Manual for the correct procedure.)

## DAILY INSPECTION (CONT'D)

### Bob-Tach (Cont'd)

#### Power Bob-Tach



#### AVOID INJURY OR DEATH

The Bob-Tach wedges must extend through the holes in the attachment mounting frame. Levers must be fully down and locked. Failure to secure wedges can allow attachment to come off.

W-2715-0208

Figure 10-20-5

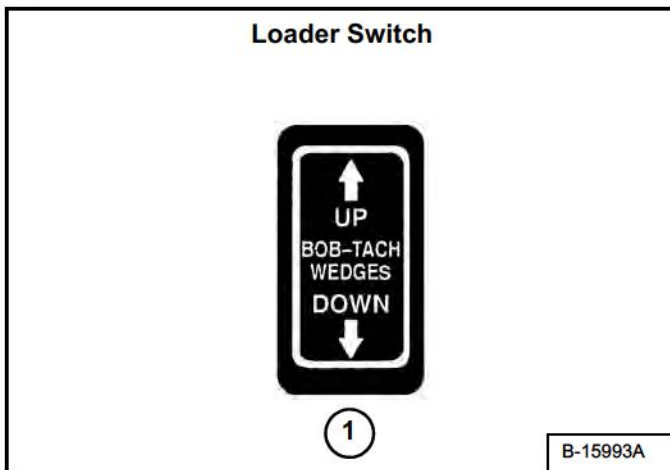


Figure 10-20-6

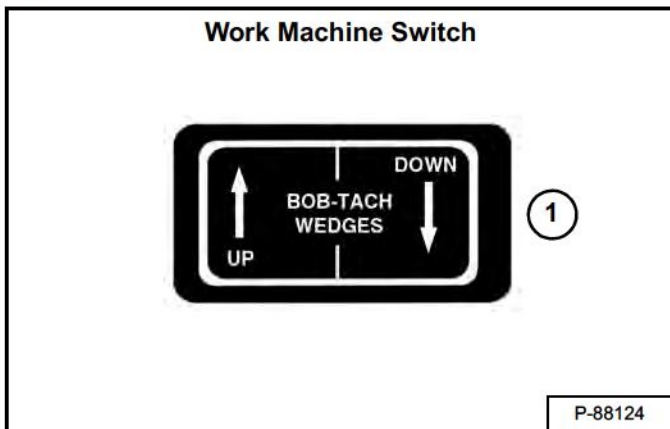
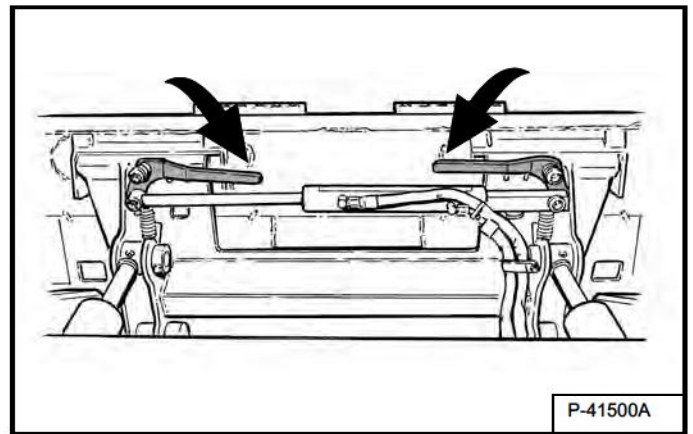
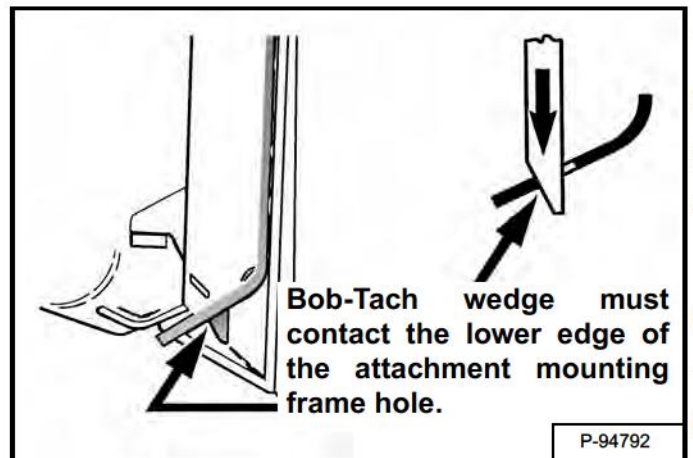


Figure 10-20-7



Push and hold the BOB-TACH “WEDGES DOWN” switch (Item 1) [Figure 10-20-5] or [Figure 10-20-6] until the levers are fully engaged in the locked position [Figure 10-20-7] (wedges fully extended through the attachment mounting frame holes).

Figure 10-20-8



The wedges must extend through the holes in the attachment mounting frame, securely fastening the attachment to the Bob-Tach [Figure 10-20-8].

**NOTE:** If the wedge does not contact the lower edge of the hole, the attachment will be loose and can come off the Bob-Tach.

Inspect the mounting frame on the attachment. (See the machine's Operation and Maintenance Manual for inspecting the Bob-Tach). Replace any parts that are damaged, bent or missing. Keep all fasteners tight. Look for cracked welds. Contact your Bobcat dealer for repair or replacement parts.

Lubricate the wedges. (See the machine's Operation & Maintenance Manual for the correct procedure.)

Dealer Copy -- Not for Resale

## LUBRICATION

### Lubrication Locations

# IMPORTANT

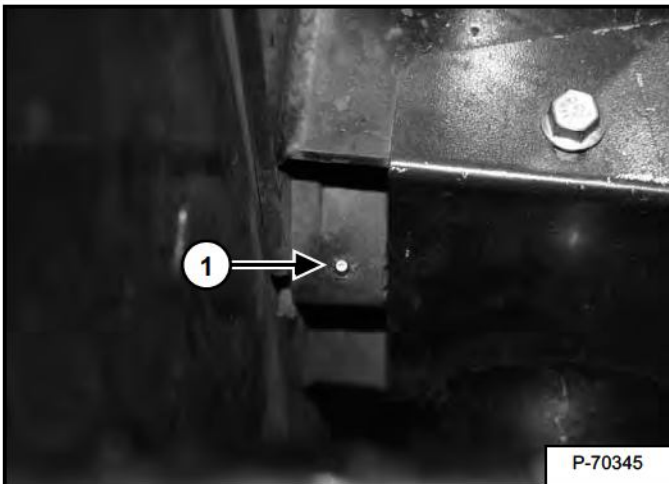
Fluid such as engine oil, hydraulic fluid, coolants, grease, etc. must be disposed of in an environmentally safe manner. Some regulations require that certain spills and leaks on the ground must be cleaned in a specific manner. See local, state and federal regulations for the correct disposal.

I-2067-0499

Always use a good quality lithium base grease when lubricating the chipper. Apply the lubricant until extra grease shows.

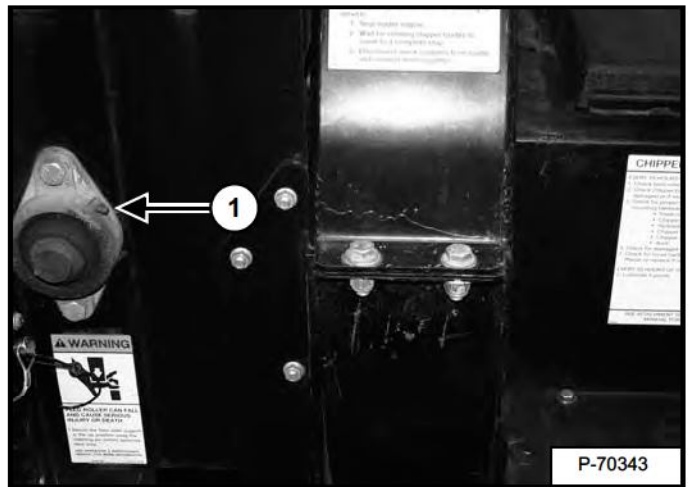
Lubricate the following five areas with grease. **EVERY 50 HOURS:**

Figure 10-30-1



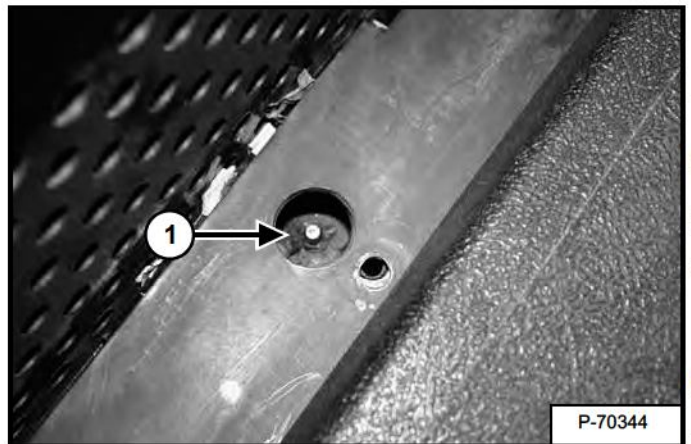
Feed roller bearing (Item 1) [Figure 10-30-1].

Figure 10-30-2



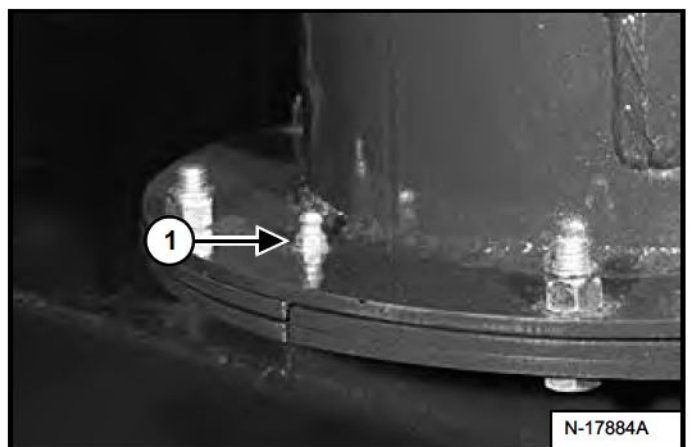
Feed roller bearing (Item 1) [Figure 10-30-2] both sides.

Figure 10-30-3



Shaft (Item 1) [Figure 10-30-3].

Figure 10-30-4



Chute (Item 1) [Figure 10-30-4].

Dealer Copy -- Not for Resale

**Buy Now**



Our support email:

[ebooklibonline@outlook.com](mailto:ebooklibonline@outlook.com)