

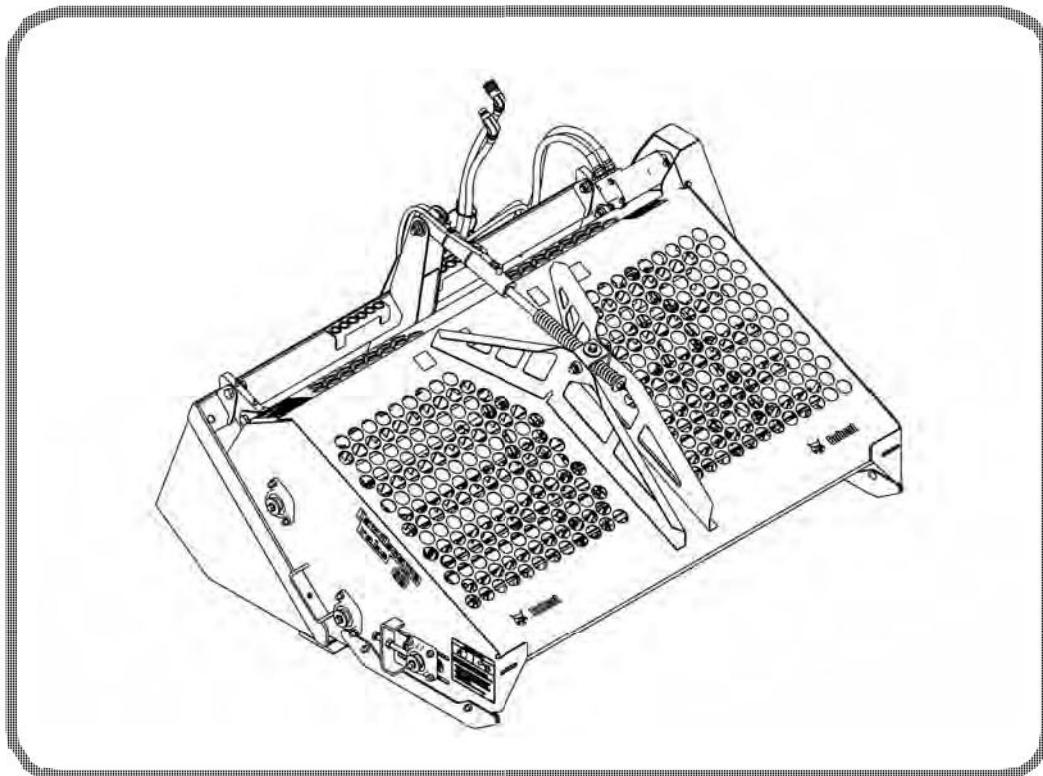


Bobcat®

Service Manual Landscape Rake

(4A) - S/N 440000101 & Above
(4A3) S/N 450000101 & Above
(5A) - S/N 460000101 & Above
(5A3) - S/N 460600101 & Above
(LR 5B) - S/N 910700101 & Above

(5B3) - S/N 062700101 & Above
(6A) - S/N 470000101 & Above
(6A3) - S/N 470600101 & Above
(LR 6B) - S/N 063000101 & Above
(6B3) - S/N 06250101 & Above



Dealer Copy -- Not for Resale



MAINTENANCE SAFETY



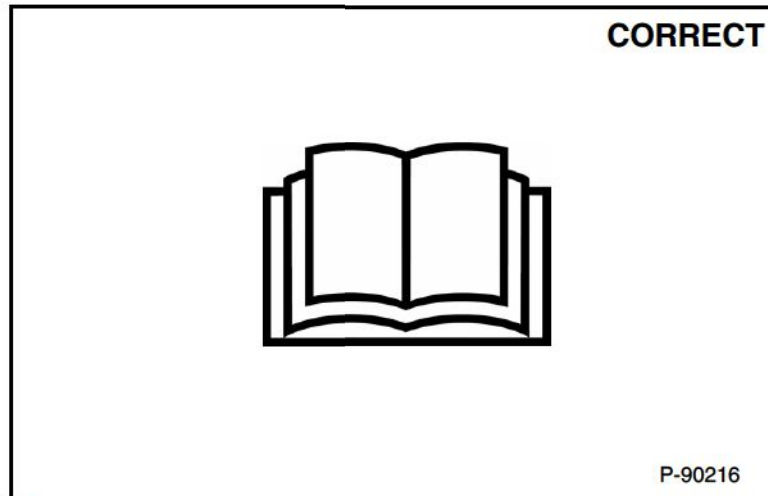
WARNING









Instructions are necessary before operating or servicing machine. Read and understand the Operation & Maintenance Manual, Operator's Handbook and signs (decals) on machine. Follow warnings and instructions in the manuals when making repairs, adjustments or servicing. Check for correct function after adjustments, repairs or service. Untrained operators and failure to follow instructions can cause injury or death.

W-2003-0807



Safety Alert Symbol: This symbol with a warning statement, means: "Warning, be alert! Your safety is involved!" Carefully read the message that follows.



-  **Never service attachments / implements without instructions. See Operation & Maintenance Manual and Attachment / Implement Service Manual.**
-  **Cleaning and maintenance are required daily.**
-  **Never service or adjust attachment / implement with the engine running unless instructed to do so in manual.**
-  **Always lower the attachment / implement to the ground before lubricating or servicing.**
-  **Avoid contact with leaking hydraulic fluid or diesel fuel under pressure. It can penetrate skin or eyes.**
-  **Stop, cool and clean engine of flammable materials before checking fluids.**
-  **Keep body, loose objects and clothing away from moving parts, electrical contacts, hot parts and exhaust.**
-  **Safety glasses are needed for eye protection from electrical arcs, battery acid, compressed springs, fluids under pressure and flying debris or when tools are used. Use eye protection approved for type of welding.**

CONTENTS

SAFETY AND MAINTENANCE	10-01
HYDRAULIC SYSTEM	20-01
MAINFRAME	30-01
SPECIFICATIONS	SPEC-01
ALPHABETICAL INDEX	INDEX-01

FOREWORD

SERIAL NUMBER LOCATION	1-7
ATTACHMENT IDENTIFICATION	1-8
A Series	1-8
B Series	1-9

Dealer Copy -- Not for Resale

SERIAL NUMBER LOCATION

Figure 1

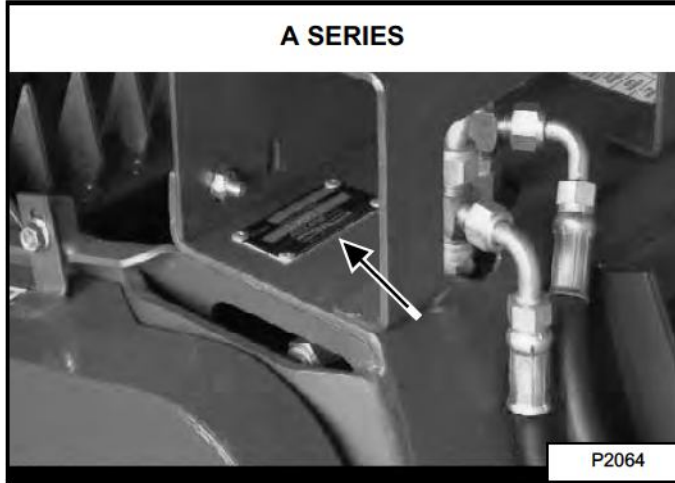


Figure 2

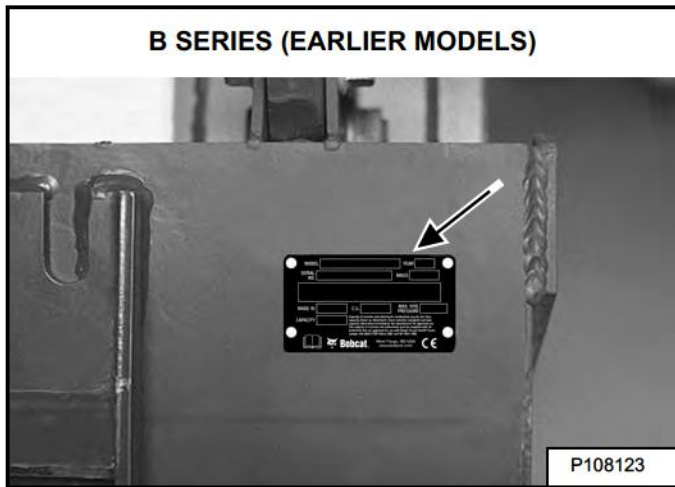
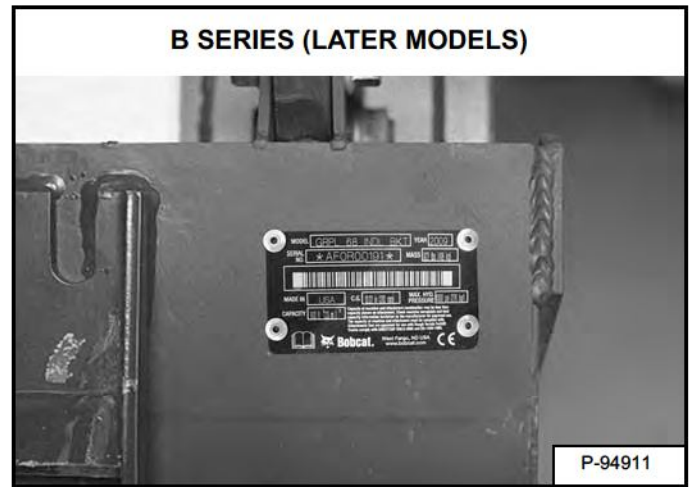


Figure 3

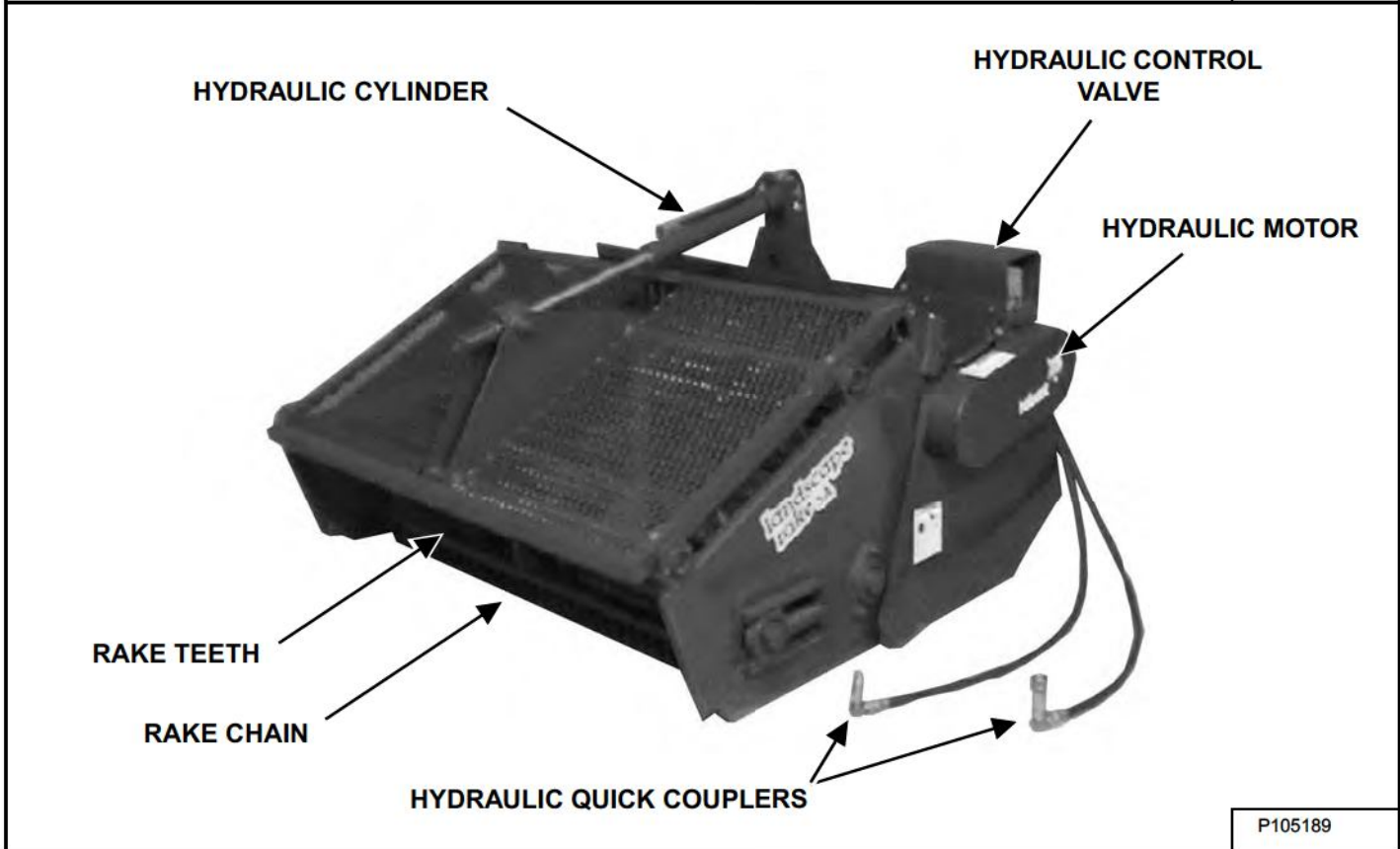
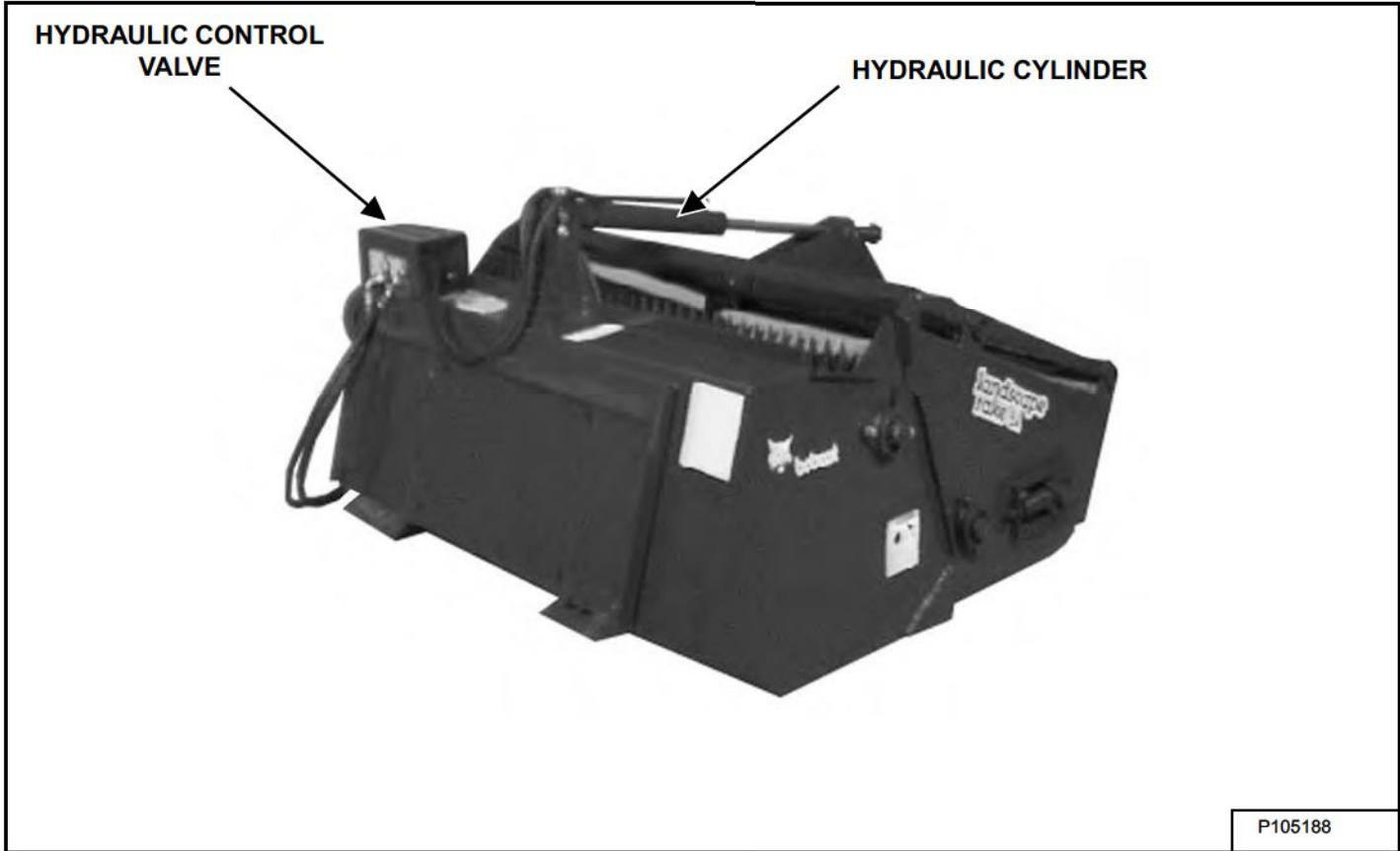


It is important to make the correct reference to the serial number of the landscape rake when making repairs or ordering parts. Early or later models (identification made by serial number) may use different parts, or it may be necessary to use different procedures in doing a specific operation [Figure 1], [Figure 2] and [Figure 3].

Dealer Copy -- Not for Resale

ATTACHMENT IDENTIFICATION

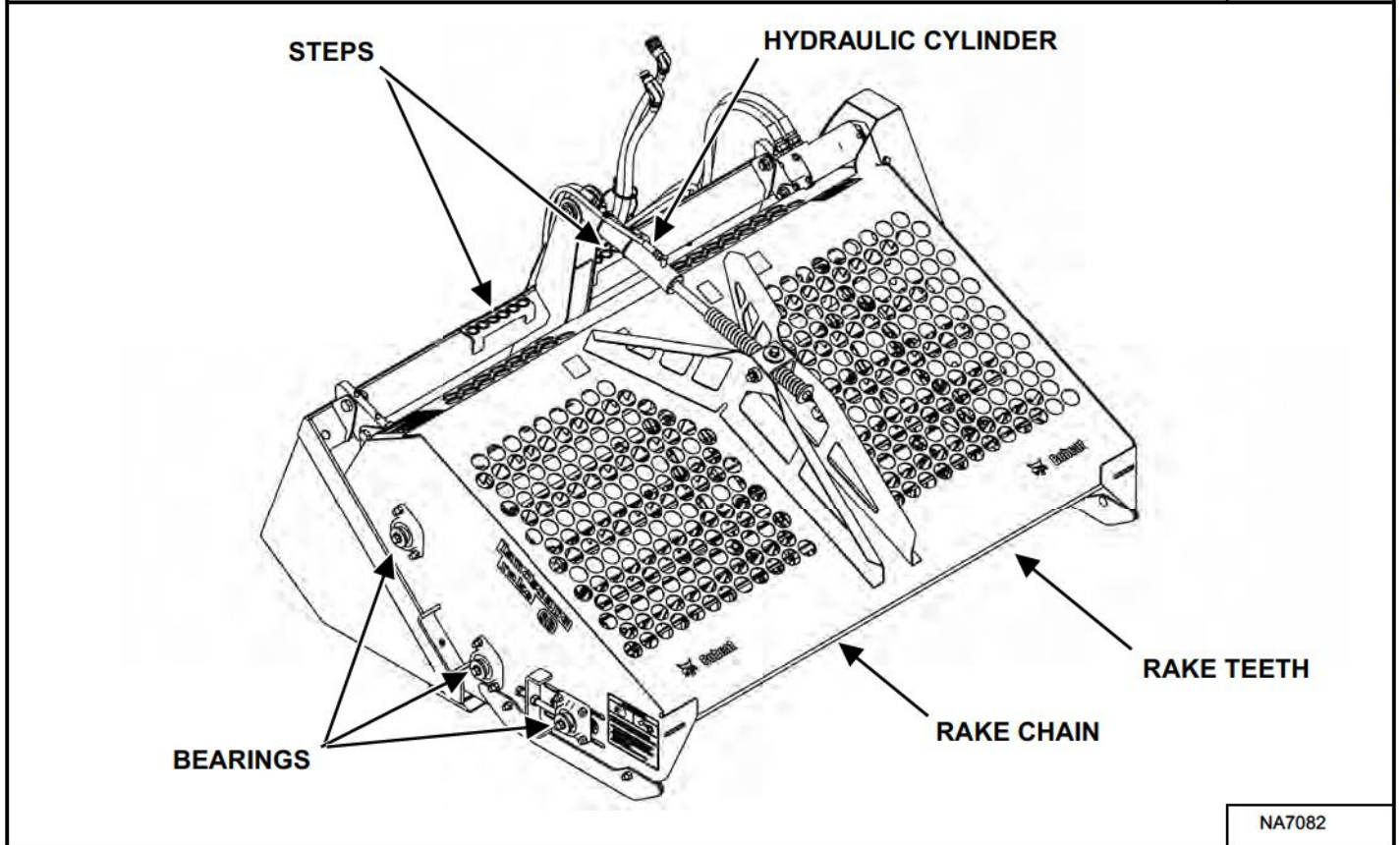
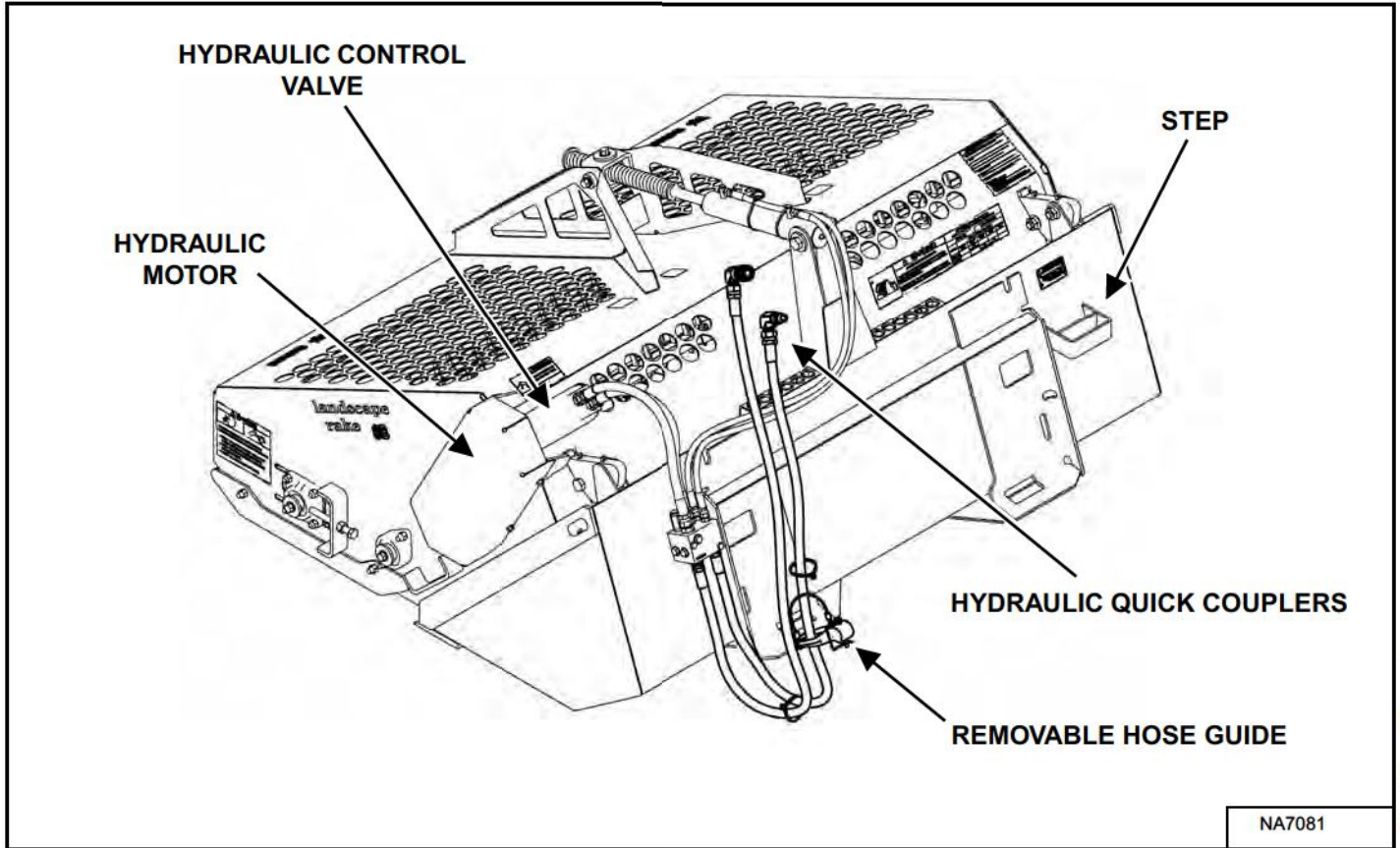
A Series



Dealer Copy -- Not for Resale

ATTACHMENT IDENTIFICATION (CONT'D)

B Series




Dealer Copy -- Not for Resale

SAFETY AND MAINTENANCE

TROUBLESHOOTING	10-10-1
Chart	10-10-1
SERVICE SCHEDULE	10-20-1
Daily Inspection	10-20-1
25 Hour Inspection	10-20-1
300 Hour Inspection	10-20-1
DAILY INSPECTION	10-30-1
Attachment Mounting Frame	10-30-1
Bob-Tach	10-30-2
LUBRICATING THE ATTACHMENT	10-40-1
A Series	10-40-1
B Series	10-40-1

TROUBLESHOOTING

Chart

 WARNING	<p>Instructions are necessary before operating or servicing machine. Read and understand the Operation & Maintenance Manual, Operator's Handbook and signs (decals) on machine. Follow warnings and instructions in the manuals when making repairs, adjustments or servicing. Check for correct function after adjustments, repairs or service. Untrained operators and failure to follow instructions can cause injury or death.</p> <p style="text-align: right;">W-2003-0807</p>
--	--

If the attachment is not working correctly, check the hydraulic system of the machine thoroughly before making any repairs on the attachment. Attachment problems can be affected by a hydraulic system that is not operating to specifications. Connect a flow meter to the machine to check the hydraulic pump output, relief valve setting and tube lines to check flow and pressure. (See the machine's Service Manual for the correct procedure to connect the flow meter.)

Use the following troubleshooting chart to locate and correct problems which most often occur with the attachment.

PROBLEM	CAUSE	CORRECTION
Rake chain does not turn in either direction.	Drive chain on hydraulic motor is broken or loose.	Replace the chain or adjust as needed.
	Drive sprocket is off the shaft.	Install the drive sprocket and tighten set screws.
	Auxiliary hydraulics are not activated.	Activate auxiliary hydraulics
	Faulty loader valve.	Repair loader valve.
Rake chain comes off sprocket.	Rake chain is too loose.	Adjust the rake chain tension.
Rake chain jumps irregularly.	Rock in link of chain.	Remove the rock.
	Sprockets are loose or out of alignment.	Check alignment and tighten set screws.
Excessive heat is being created by the hydraulics.	Rake attachment has been mounted on a loader with too much hydraulic flow.	Install the correct sprockets, chain and drive kit. Run at slower engine speed.

Dealer Copy -- Not for Resale

Buy Now



Our support email:

ebooklibonline@outlook.com