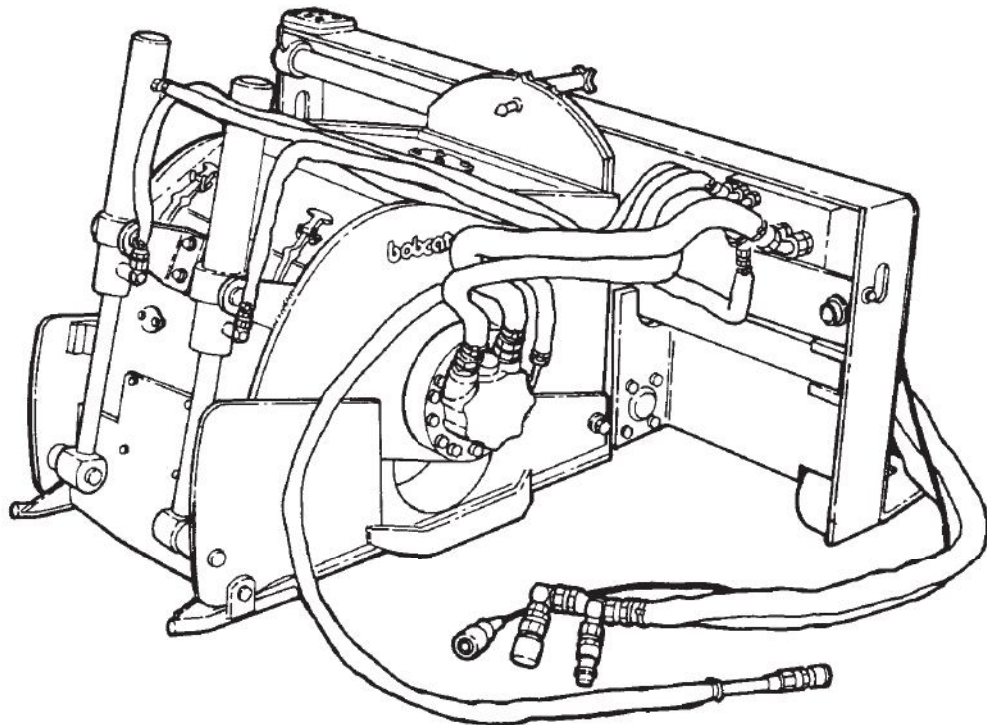




# PLANER

(S/N 178100101 & Above)  
(S/N 887400101 & Above)  
(S/N 052300101 & Above)  
(S/N 303600101 & Above)  
(S/N 400101001 & Above)  
(S/N 400201001 & Above)  
(S/N 910200101 & Above)  
(S/N 910300101 & Above)  
(S/N 341000101 & Above)  
(S/N 721700101 & Above)

## Service Manual



Dealer Copy -- Not for Resale

# MAINTENANCE SAFETY



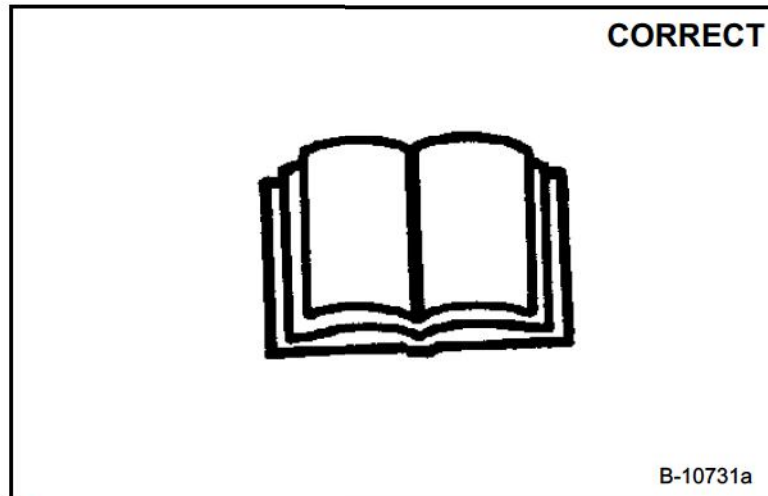
## WARNING









Instructions are necessary before operating or servicing machine. Read and understand the Operation & Maintenance Manual, Operator's Handbook and signs (decals) on machine. Follow warnings and instructions in the manuals when making repairs, adjustments or servicing. Check for correct function after adjustments, repairs or service. Untrained operators and failure to follow instructions can cause injury or death.

W-2003-0903



**Safety Alert Symbol:** This symbol with a warning statement, means: "Warning, be alert! Your safety is involved!" Carefully read the message that follows.



-  Never service attachments without instructions. See Operation & Maintenance Manual and Attachment Service Manual.
-  Cleaning and maintenance are required daily.
-  Never service or adjust attachment with the engine running unless instructed to do so in manual.
-  Always lower the attachment to the ground before lubricating or servicing.
-  Avoid contact with leaking hydraulic fluid or diesel fuel under pressure. It can penetrate skin or eyes.
-  Stop, cool and clean engine of flammable materials before checking fluids.
-  Keep body, loose objects and clothing away from moving parts, electrical contacts, hot parts and exhaust.
-  Safety glasses are needed for eye protection from electrical arcs, battery acid, compressed springs, fluids under pressure and flying debris or when tools are used. Use eye protection approved for type of welding.

## ALPHABETICAL INDEX

ADAPTER WIRE HARNESS SCHEMATIC . . .	20-40-1
ADJUSTMENT SCREW ASSEMBLY . . . . .	20-20-1
CUTTING DEPTH ADJUSTMENT BOLT . . . . .	20-20-1
CUTTING DEPTH GAUGE . . . . .	20-20-1
DRIVE CARRIER . . . . .	30-10-1, 30-30-1
DRUM . . . . .	10-10-1, 20-10-1, 20-20-1, 30-10-1, 30-20-1
DRUM COVER . . . . .	20-20-1
DRUM HOUSING . . . . .	10-20-1, 30-20-1
ELECTRICAL SCHEMATIC . . . . .	30-40-1
GLOSSARY OF HYDRAULIC SYMBOLS FOR ATTACHMENTS . . . . .	10-40-1, 30-40-4
HYDRAULIC AND ELECTRICAL SCHEMATIC . . . . .	20-40-1
HYDRAULIC CONTROL VALVE . . .	20-30-1, 30-30-1
HYDRAULIC CYLINDER . . . . .	10-30-1, 20-30-1, 30-30-1, 90-10-1
HYDRAULIC DEPTH ADJUSTMENT MOTOR . . . . .	20-30-1
HYDRAULIC MOTOR . . . . .	10-30-1, 20-30-1, 30-30-1
HYDRAULIC SCHEMATIC . . . . .	10-40-1, 30-40-1
INSPECTION OF THE BOB-TACH . . . . .	30-10-1
LUBRICATING THE PLANER . . . . .	10-10-1, 20-10-1
MOUNTING BARS . . . . .	20-20-1, 30-20-1
PARTS IDENTIFICATION . . . . .	iii
PLANER CONVERSION MATRIX . .	20-40-1, 30-40-1
PLANER MOUNT INSPECTION . . . . .	30-10-1
RUBBER SKIRT . . . . .	20-10-1, 30-10-1, 30-20-1
SELECTOR VALVE . . . . .	10-30-1
SERIAL NUMBER LOCATION . . . . .	iii
SKIS . . . . .	20-20-1, 30-20-1
SPECIFICATIONS . . . . .	10-40-1, 20-40-1, 30-40-1
TORQUE SPECIFICATIONS . . . . .	90-10-1
TROUBLESHOOTING . . . . .	10-10-1, 20-10-1, 30-10-1
WHEELS . . . . .	10-20-1, 30-20-1

# CONTENTS

<b>STANDARD FLOW PLANER (S/N 178100101 &amp; Above)</b>	
Hydraulic System .....	10-30-1
Main Frame .....	10-20-1
Preventive Maintenance .....	10-10-1
Specifications And Schematics .....	10-40-1
<b>HIGH FLOW PLANER (S/N 887400101 &amp; Above), (S/N 052300101 &amp; Above), (S/N 303600101 &amp; Above), (S/N 400101001 &amp; Above), (S/N 400201001 &amp; Above), (S/N 910200101 &amp; Above), (S/N 910300101 &amp; Above)</b>	
Hydraulic System .....	20-30-1
Main Frame .....	20-20-1
Preventive Maintenance .....	20-10-1
Specifications And Schematics .....	20-40-1
<b>HIGH FLOW PLANER (S/N 341000101 &amp; Above) AND HIGH FLOW PLANER (S/N 721700101 &amp; Above)</b>	
Hydraulic System .....	30-30-1
Main Frame .....	30-20-1
Preventive Maintenance .....	30-10-1
Specifications And Schematics .....	30-40-1
<b>HYDRAULIC CYLINDER</b>	
Assembly .....	90-10-1
Disassembly .....	90-10-1

**STANDARD  
FLOW PLANER**

**HIGH FLOW  
PLANER**

**HIGH FLOW 18  
AND 24 INCH  
PLANER**

**HYDRAULIC  
CYLINDER**

**CALIFORNIA  
PROPOSITION 65 WARNING**  
Diesel engine exhaust and some of its  
constituents are known to the State of California  
to cause cancer, birth defects and other  
reproductive harm.

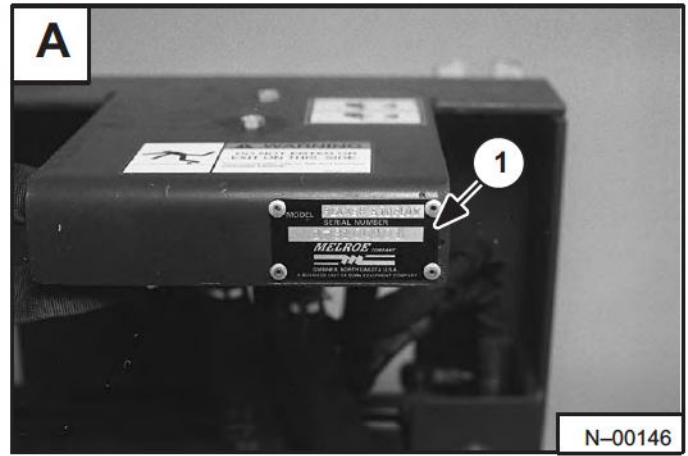
Dealer Copy -- Not for Resale

## SERIAL NUMBER LOCATION

(S/N 178199191 & Above)

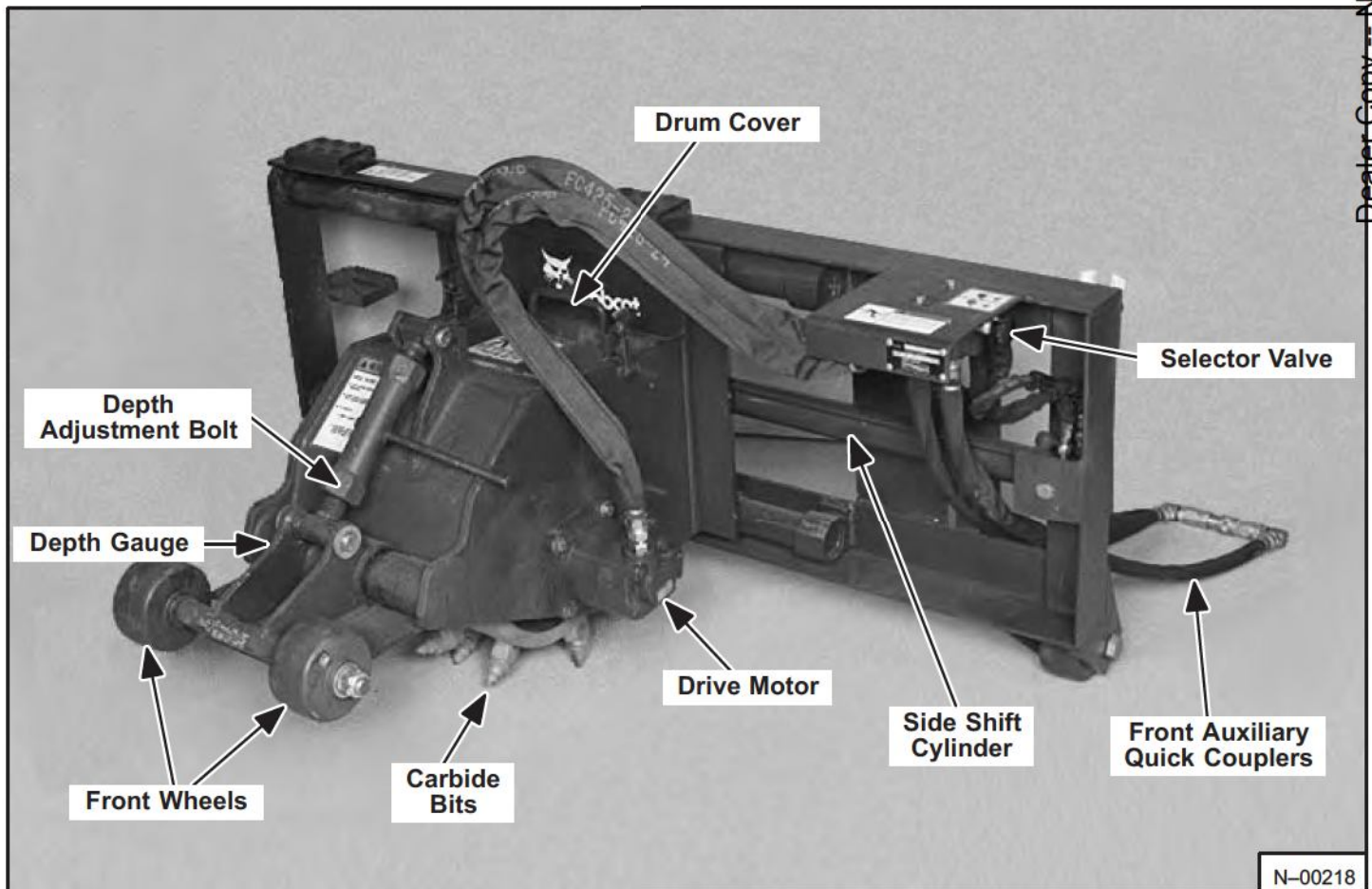
It is important to make the correct reference to the Serial Number of the Bobcat Standard Flow Planer when making repairs or ordering parts. Early or later models (identifications made by serial number) may use different parts, or it may be necessary to use a different procedure in doing a specific service operation [A].

The Standard Flow Planer serial number plate (Item 1) [A] is located on the front side of the frame by the selector valve.



## PARTS IDENTIFICATION

(S/N 178100101 & Above)



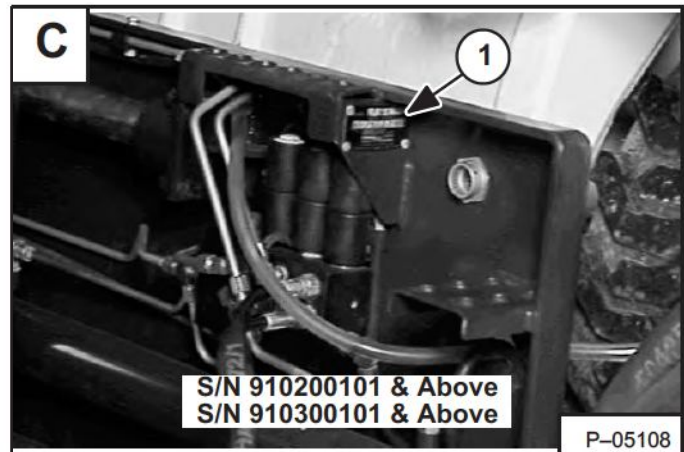
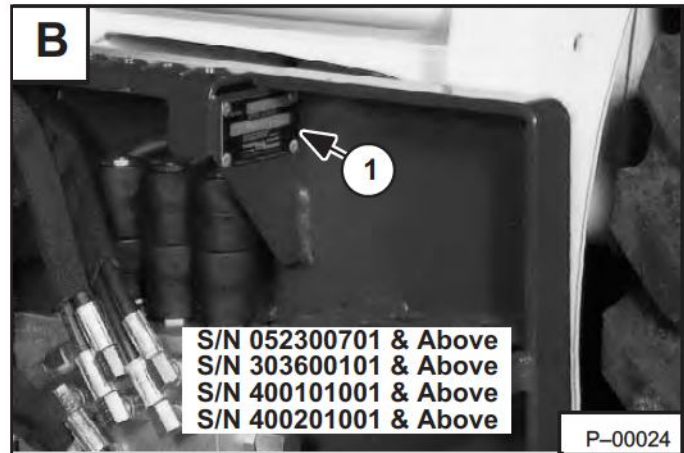
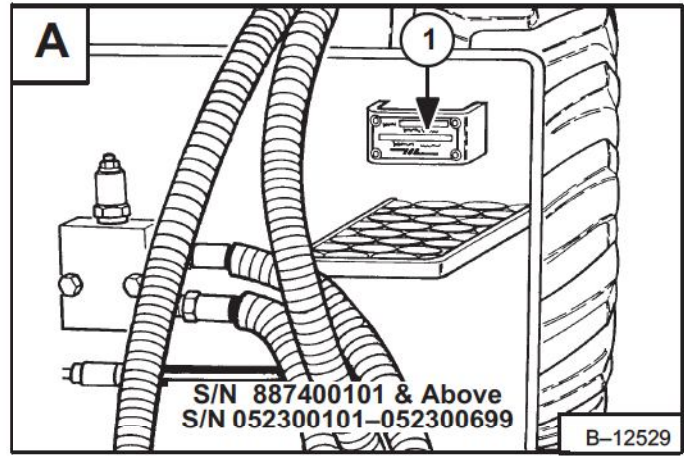
Dealer Copy Not for Resale

## SERIAL NUMBER LOCATIONS

(S/N 8874001 & Above), (S/N 052300101 & Above), (S/N 303600101 & Above), (S/N 400101001 & Above), (S/N 400201001 & Above), (S/N 910200101 & Above) and (S/N 910300101 & Above)

It is important to make the correct reference to the Serial Number of the Bobcat Planer when making repairs or ordering parts. Early or later models (identifications made by serial number) may use different parts, or it may be necessary to use a different procedure in doing a specific service operation [A], [B] & [C].

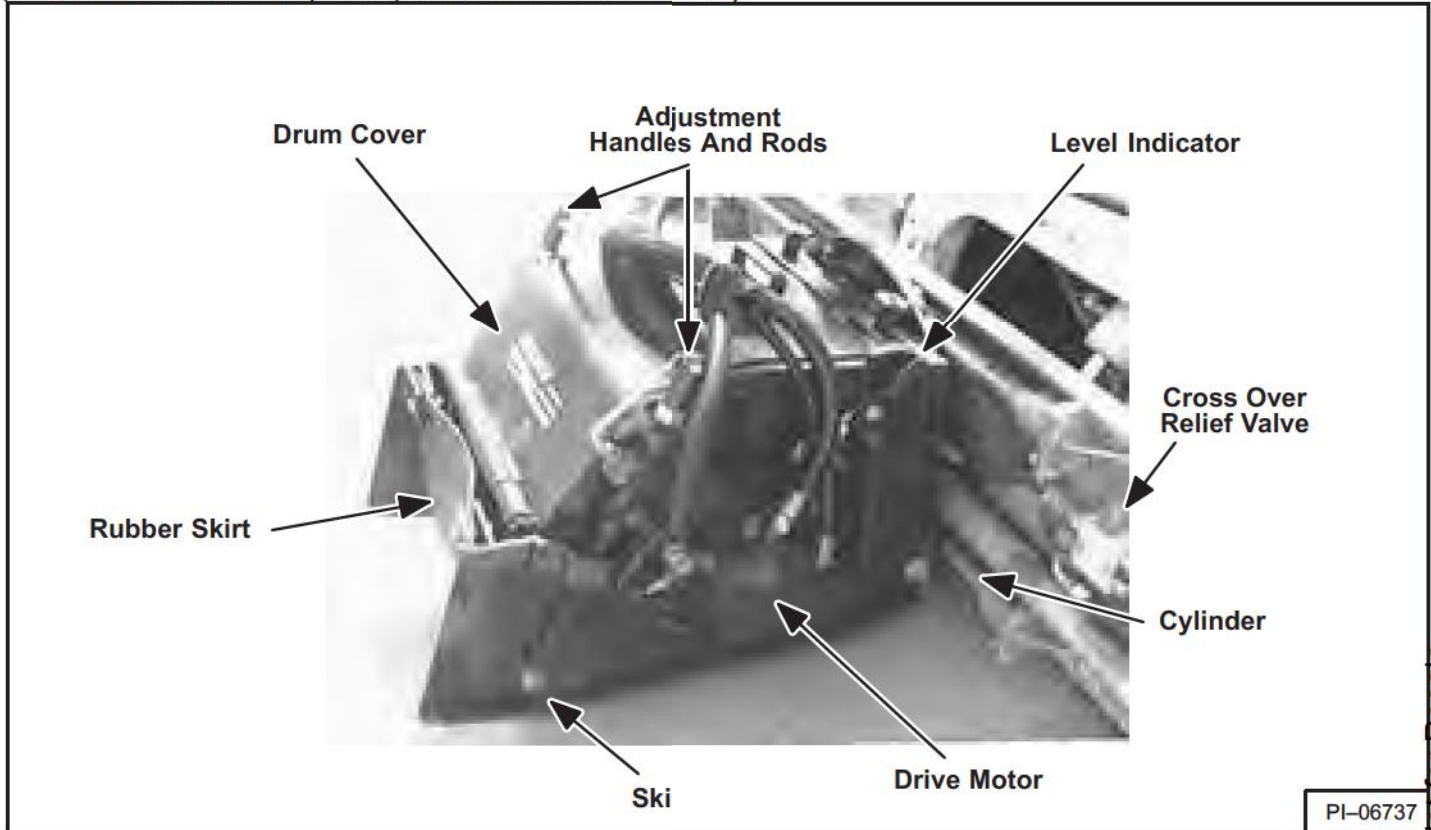
The Planer serial number plate (Item 1) [A], [B] & [C] is located on the front side of the Planer frame in the upper left corner.



Dealer Copy -- Not for Resale

**PARTS IDENTIFICATION**

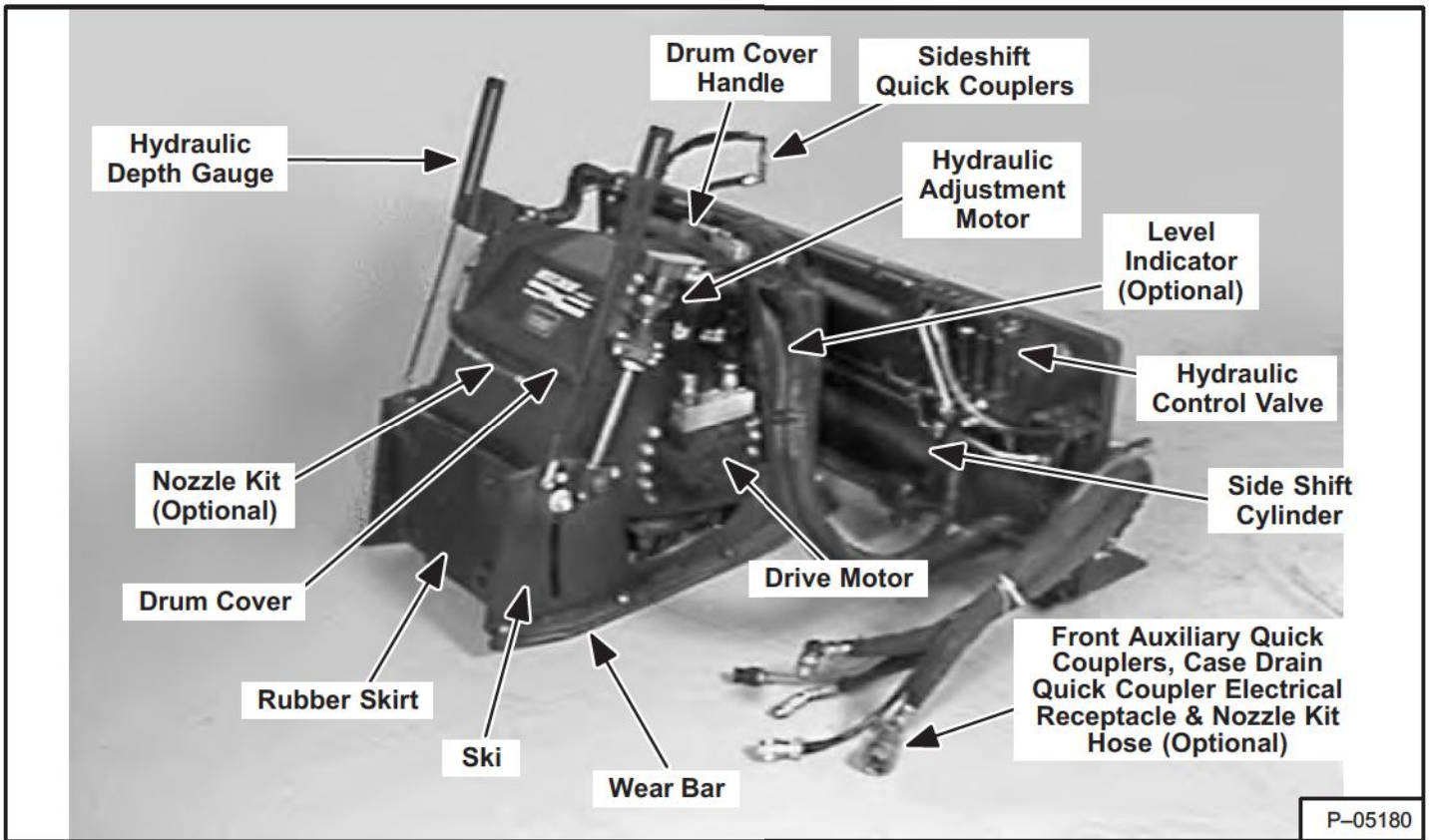
(S/N 887400101 & Above) AND (S/N 052300101–052300699)



**PARTS IDENTIFICATION**

(S/N 052300701 & Above), (S/N 303600101 & Above), (S/N 400101001 & Above), (S/N 400201001 & Above), (S/N 910200101 & Above) And (S/N 910300101 & Above)

Dealer Copy -- Not for Resale



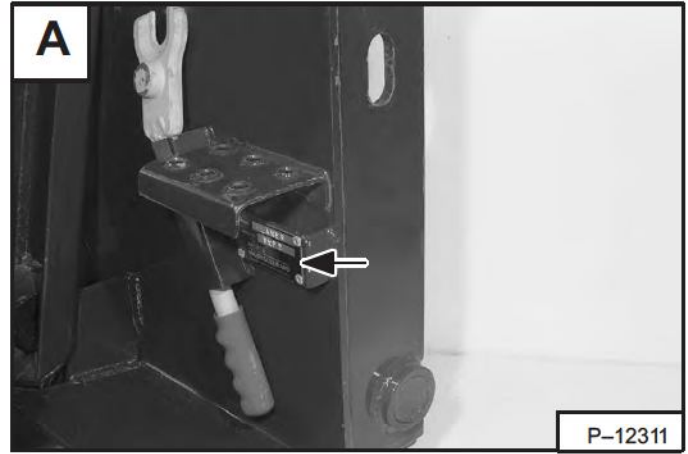
Dealer Copy -- Not for Resale



## SERIAL NUMBER LOCATION

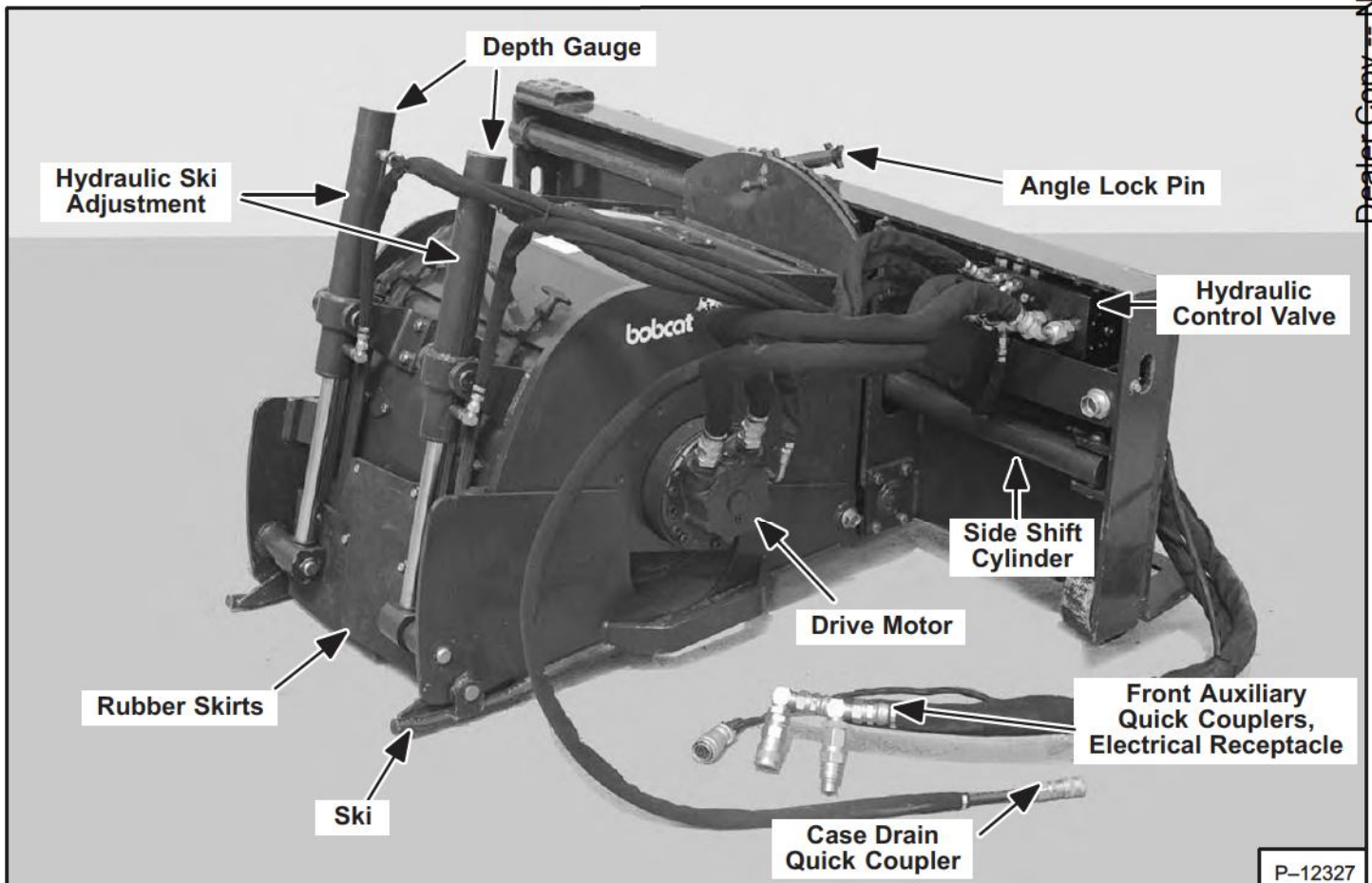
(S/N 341000101 & Above) And (S/N 721700101 & Above)

Always use the serial number of the Planer when requesting service information or when ordering parts. Early or later models (identification made by serial number) may use different parts, or it may be necessary to use a different procedure in doing a specific service operation [A].



## PARTS IDENTIFICATION

(S/N 341000101 & Above) And (S/N 721700101 & Above)



Dealer Copy - Not for Resale

**Buy Now**



Our support email:

[ebooklibonline@outlook.com](mailto:ebooklibonline@outlook.com)