

1150 CRAWLER

TABLE OF CONTENTS

SERIES/SECTION	SECTION NO.	FORM NO.
1 GENERAL		
General Engine Specifications (B401 Engine)	1010	9-79552
Detailed Engine Specifications (B401 Engine)	1022	9-77065
Fuel System Specifications	1030	9-76115
Specifications for Case A401 Diesel Engines	CC	9-76481
Section CC 9-76481 Supplement No. 1 (Torques and Valve Timing)	Sup. 1	9-76481
Specifications (General Tractor Specifications and Maintenance)	I	9-72481
2 ENGINES		
General		
Engine Removal (See Section IX in 90 Series)		
Cooling System	III	9-72481
Engine Air Intake System	IV	9-72481
A401 Engine		
Cylinder Heads, Valve Systems, Rocker Arms, Decompressor	K	9-76972
Engine Block	M	9-74222
Supplement - Servicing the Front Mounted Oil Pump	M	9-78012
B401 Engine		
Engine Diagnosis	2001	9-76365
Engine Tune-Up	2002	9-76375
Cylinder Head, Valve Train, Crankshaft	2015	9-76165
Cylinder Block, Sleeves, Pistons, Rods	2025	9-76175
Crankshaft, Main Bearings, Flywheel and Oil Seal	2035	9-76185
Lubrication System, Oil Pump, Heat Exchanger, Oil Flow Diagram	2046	9-76805
Cooling System, Water Manifold, Water Pump, Thermostat	2055	9-76335
3 FUEL SYSTEM		
Fuel Injectors - Case Powrcel Fuel Injection Pump (A401 Engine)	I	9-75421
Fuel System and Filters (B401 Engine)	3010	9-75296
Fuel Injection Pump (B401 Engine)	3012	9-74396
Fuel Injectors (B401 Engine)	3013	9-74959
4 HYDRAULICS		
Equipment Pump A16690, D35994	X	9-72481
Equipment Pumps D40285, D43363, D43382	X, Sup. 1	9-74288
Loader and Dozer Control Valves	XI	9-72481
Hydraulic Cylinders	XII	9-72481
Hydraulic Cylinders for Model 34 Backhoe	XII, Sup. 1	9-72483
Lift Cylinders	46	9-74745
Hydraulic Testing	XIII	9-74281

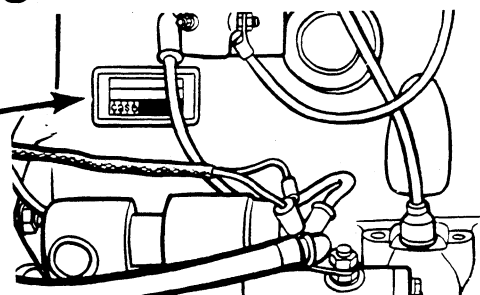
Reprinted

SERIES/SECTION	SECTION NO.	FORM NO.
5 TRACK AND SUSPENSION		
Track and Suspension System	VIII	9-72486
Intertrac Rollers	5505	9-72481
6 POWER TRAIN		
T593 Transmission and Final Drives	64	9-79981
Torque Converter Troubleshooting (See Section XII, 40 Series)	VI	9-72481
8 ELECTRICAL		
Electrical System and Instruments	V	9-72481
Electrical System and Instruments (SN 7108999 and After)	V	9-72485
9 MOUNTED EQUIPMENT		
Miscellaneous Tractor Components	IX	9-72481
Loader	XIV	9-72481
Dozers	XV	9-72487
Backhoe (Model 36)	XVI	9-72481
Model 34 Backhoe	XVI, Sup: 1	9-72482
Ripper	XVII	9-72481
E-30-SG Winch	XVIII	9-72484

Section 1010

GENERAL ENGINE SPECIFICATIONS 1150 CRAWLERS

THE ENGINE MODEL AND SERIAL NUMBER IS STAMPED ON A PLATE LOCATED ON THE SIDE OF THE ENGINE ABOVE THE CRANKING MOTOR.



DIESEL ENGINES

General

Type	6 Cylinder, 4 Stroke Cycle, Valve-in-Head.
Firing Order	1-5-3-6-2-4
Bore	4-1/8 Inches
Stroke	5 Inches
Piston Displacement	401 Cubic Inches
Compression Ratio	16.5 to 1
No Load Governed Speed	(Dozer) 1990 RPM (Loader) 2060 RPM
Rated Engine Speed	(Dozer) 1850 RPM (Loader) 1900 RPM
Engine Idling Speed	725 to 775 RPM
*Valve Tappet Clearance (Exhaust)	(Hot) .020 Inch
(Intake)	(Cold) .025 Inch (Hot and Cold) .015 Inch

*Hot Settings Are Made After the Engine Has Operated At Thermostat Controlled Temperature For At Least Fifteen Minutes.

Piston and Connecting Rods

Rings per Piston	3
Number of Compression Rings	2
Number of Oil Rings	1
Type Pins	Full Floating Type
Type Bearing	Replaceable Precision, Steel Back, Copper-Lead Alloy Liners

Main Bearings

Number of Bearings	7
Type Bearings	Replaceable Precision Steel Back, Copper-Lead Alloy Liners

Engine Lubricating System

Crankcase Capacity	14 Qts.
with Filter Change	15 Qts.
Oil Pressure	45 to 55 Pounds with Engine Warm and Operating at Rated Engine Speed
Type System	Pressure and Spray Circulation
Oil Pump	Gear Type
Oil Filter	Full Flow Spin on Type



Fuel System

Fuel Injection Pump	Robert Bosch, Type PES Multiple Plunger
Pump Timing	29 Degrees Before Top Dead Center (Port Closing)
Fuel Injectors (Prior to Engine SN 2504221)	Pencil Type (Opening Pressure 2800 PSI)
(Starting With Engine SN 2504221)	Pencil type (opening pressure 3200 PSI)
Fuel Transfer Pump	Plunger Type, Integral Part of Injection Pump
Governor	Variable Speed, Fly-Weight Centrifugal Type, Integral Part of Injection Pump
1st Stage Fuel Filter	Full Flow Spin on Type
2nd Stage Fuel Filter	Full Flow Spin on Type

GENERAL TORQUE SPECIFICATION TABLE (Revised 7-72)

USE THE FOLLOWING TORQUES WHEN SPECIAL TORQUES ARE NOT GIVEN

NOTE: These values apply to fasteners as received from supplier, dry, or when lubricated with normal engine oil. They do not apply if special graphited or moly-disulphide greases or other extreme pressure lubricants are used. This applies to both UNF and UNC threads.

SAE Grade No.		5				8 ★			
Bolt head identification marks as per grade NOTE: Manufacturing Marks Will Vary									
		Torque				Torque			
Bolt Size		Foot Pounds		Meter Kilograms		Foot Pounds		Meter Kilograms	
Inches	Millimeters	Min.	Max.	Min.	Max.	Min.	Max.	Min.	Max.
1/4	6.35	9	11	1.2	1.5	12	15	1.7	2.1
5/16	7.94	17	20.5	2.4	2.8	24	29	2.3	4.0
3/8	9.53	35	42	4.8	5.8	45	54	6.2	7.5
7/16	11.11	54	64	7.5	8.9	70	84	9.7	11.6
1/2	12.70	80	96	11.1	13.3	110	132	15.2	18.3
9/16	14.29	110	132	15.2	18.3	160	192	22.1	26.6
5/8	15.88	150	180	20.7	24.9	220	264	30.4	36.5
3/4	19.05	270	324	37.3	44.8	380	456	52.6	63.1
7/8	22.23	400	480	55.3	66.4	600	720	83.0	99.6
1	25.40	580	696	80.2	96.3	900	1080	124.5	149.4
1-1/8	25.58	800	880	110.6	121.7	1280	1440	177.0	199.2
1-1/4	31.75	1120	1240	154.9	171.5	1820	2000	251.7	276.6
1-3/8	34.93	1460	1680	201.9	232.3	2380	2720	329.2	376.2
1-1/2	38.10	1940	2200	268.3	304.3	3160	3560	437.0	492.3
						★ Thick nuts must be used with Grade 8 bolts			

NOTE: The CASE CORPORATION reserves the right to make improvements in design or changes in specifications at any time without incurring any obligation to install them on units previously sold.

SECTION

CC

SPECIFICATIONS FOR

CASE A401 DIESEL

ENGINES

Thank you so much for reading.
Please click the “Buy Now!”
button below to download the
complete manual.



After you pay.

You can download the most
perfect and complete manual in
the world immediately.

Our support email:

ebooklibonline@outlook.com