

# TABLE OF CONTENTS

## 2870 TRACTORS

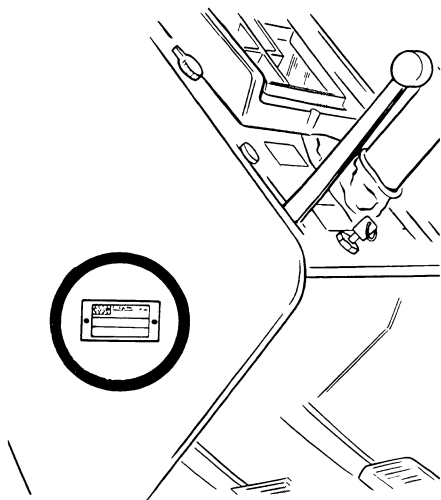
SERIES	SECTION	DESCRIPTION	FORM NUMBER
10	<b>GENERAL</b>		
	1010	General Specifications - 2870 Tractors .....	9-80416
	1012	Lubrication - 2870 Tractors .....	9-80405
	1120	Engine - 674 Cu. In. ....	9-80076
	1130	Fuel System .....	9-80425
	1040	Hydraulics .....	9-80445
	1050	Steering System .....	9-80455
	1060	Power Train .....	9-80465
	1070	Brake System .....	9-80475
20	<b>ENGINES</b>		
	2101	Engine Diagnosis .....	9-80085
	2102	Engine Tune-Up .....	9-80056
	2110	Engine Removal .....	9-80205
	2115	Cylinder Head, Valves and Rocker Arms .....	9-79836
	2120	Cylinder Block, Sleeves, Pistons and Rods .....	9-79845
	2125	Crankshaft and Main Bearings .....	9-79855
	2130	Camshaft, Bushings and Valve Lifters .....	9-79866
	2140	Flywheel and Rear Oil Seal .....	9-79905
	2145	Lubrication System, Pump, Cleaner, Relief Valve & Heat Exchanger .....	9-79885
	2155	Cooling System, Water Pump and Thermostats .....	9-79895
	2165	Turbocharger, 674 Cu. In. Engine .....	9-79955
	2175	Air Induction and Exhaust System .....	9-80155
	2655	Engine Lubrication .....	9-79975
	2290	Reconditioning Engine Cylinder Block .....	8-21170
30	<b>FUEL SYSTEM</b>		
	3110	Fuel System and Filters .....	9-80495
	3112	Fuel Injection Pump and Pump Drive .....	9-79946
	3113	21MM Fuel Injectors - Robert Bosch .....	9-80815
40	<b>ELECTRICAL</b>		
	4010	Tractor Wiring Diagram - Starting with Tractor SN 8825418 .....	9-80955
	4010	Tractor Wiring Diagram - Prior to Tractor SN 8825418 .....	9-80185
	4011	Tractor Cab Wiring Diagram - Starting with Cab SN 7882601 .....	9-80965
	4011	Tractor Cab Wiring Diagram - Prior to Cab SN 7882601 .....	9-80486
	4012	Starting or Cranking Motors .....	9-80595
	4013	Battery Servicing and Testing .....	9-80565
	4114	Delco-Remy 10 SI Series Alternator Systems .....	9-80586
	4115	Delco-Remy 10 SI Series Alternator System .....	9-45891
	4020	Neutral Start Switch Adjustment .....	9-80575
50	<b>STEERING</b>		
	5005	Testing Tractor Steering System .....	9-80915
	5010	Steering Column With Steering Pump .....	9-80526
	5011	Steering Cylinders .....	9-80515
	5012	Rear Steer Control Valve & Load Check Valve .....	9-80535
	5013	Steering Lines, Linkage and Cables .....	9-80865
	5014	Front and Rear Steering Adjustments .....	9-46001
	5015	Proportional Flow Divider Valve .....	9-80545

<b>60</b>	<b>POWER TRAIN</b>	
6001	Trouble Shooting RPS-34 Power Shift Transmission .....	9-76037
6005	Testing RPS-34 Power Shift and PTO .....	9-80885
6012	Axles and Planetaries .....	9-80635
6016	Differentials and Drive Shafts .....	9-80735
6020	Torque Limiter Clutch .....	9-80295
6030	RPS-34 Power Shift .....	9-80236
6035	RPS Power Shift Control Valve and Linkage .....	9-80435
6040	Four Speed Transmission .....	9-80335
6045	Hydraulic PTO-Clutch, Valve, Dropbox & Lines .....	9-80725
<b>70</b>	<b>BRAKES</b>	
7010	Brake Master Cylinder, Brake Pedal, Parking Brake Assembly .....	9-80826
<b>80</b>	<b>HYDRAULICS</b>	
8005	Testing Tractor Hydraulic System .....	9-80925
8010	Hydraulic Oil Filters and Lines .....	9-80805
8011	Triple Hydraulic Pump and Lines .....	9-80715
8012	Pressure Regulator Valve and Lines .....	9-80765
8013	Installation and Adjustment of Remote Valves .....	9-80695
8014	L.H. and R.H. Remote Hydraulic Valves .....	9-80625
8016	3 Point Hitch and Hitch Coupler .....	9-80745
8017	Hitch Control Valve and Lines .....	9-80755
8018	Hyd. 3 Point Hitch Cylinders and Lines .....	9-80555
8019	Portable Hydraulic Cylinders .....	9-80615
<b>90</b>	<b>ACCESSORIES</b>	
9005	Trouble Shooting Air Conditioning System .....	9-78895
9015	Gauging and Testing Air Conditioning System .....	9-78995
9025	Compressor Isolation, Removal, Installation and Evacuation - Discharging, Evacuation and Charging the A/C System .....	9-79015
9035	Servicing Air Conditioning Components .....	9-80895
9045	Servicing the Cab Blower Assembly .....	9-80905
9050	Operator's Seat Adjustments .....	9-79755
9060	Removal of Hood, Panels and Grille .....	9-80165
9065	Repair of Urethane Hood, Panels and Grille .....	9-80995
<b>100</b>	<b>HOW IT WORKS</b>	
15001	Tractor Steering System Oil Flows .....	9-80795
15010	Steering Hand Pump and Valve .....	9-80255
15012	Rear Steer Control Valve & Check Valve .....	9-80345
15015	Proportional Flow Divider Valve .....	9-80775
16030	Power Shift .....	9-80395
18001	Tractor Hydraulic System Oil Flows .....	9-80785
18011	Hydraulic Triple Pump .....	9-80315
18012	Pressure Regulator Valve .....	9-80305
18014	Remote Hydraulic Valve .....	9-80355
18015	Hydraulic PTO Clutch, Valve and Dropbox .....	9-80285
18017	Three Point Hitch Valve .....	9-80365
19010	Air Conditioning - Theory of Operation .....	9-78615

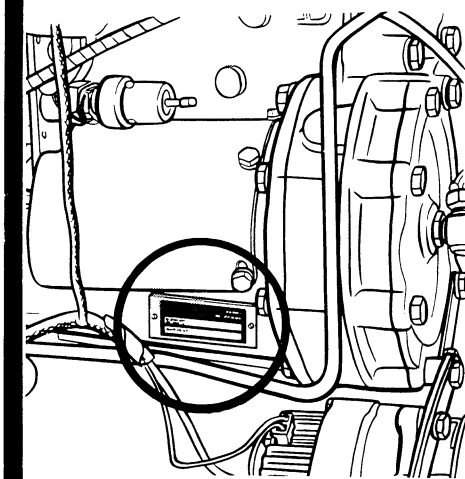
# Section 1010

## 2870 TRACTOR GENERAL SPECIFICATIONS

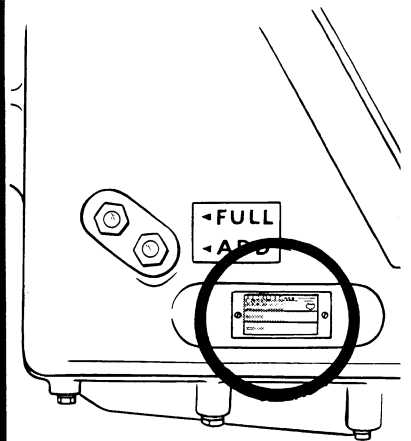
### SERIAL NUMBERS



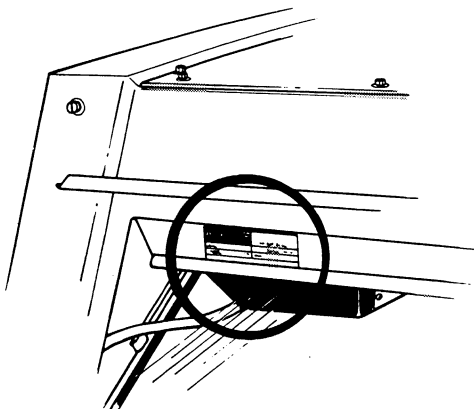
TRACTOR SERIAL NUMBER



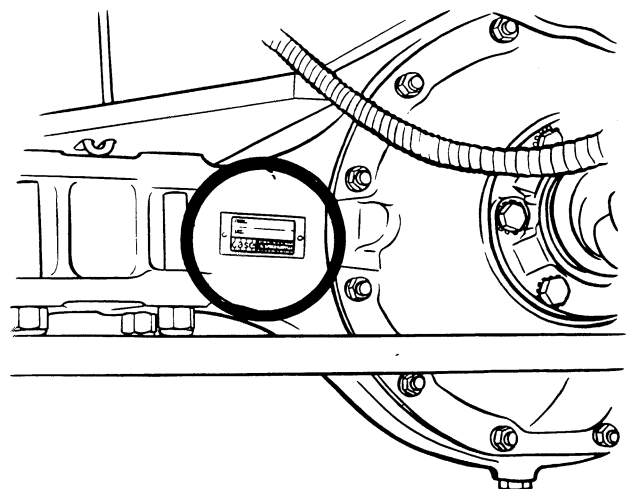
ENGINE SERIAL NUMBER



TRANSMISSION SERIAL NUMBER



CAB SERIAL NUMBER



AXLE SERIAL NUMBER

## DIESEL ENGINE

### General

Type .....	6 Cylinder, 4 Stroke Cycle, Valve-In-Head, Turbocharged Diesel Engine
Firing Order .....	1-5-3-6-2-4
Bore .....	5 Inches (127mm)
Stroke .....	5.71 Inches (145mm)
Piston Displacement .....	674 Cubic Inches (11 045 cm <sup>3</sup> )
Compression Ratio .....	14.7 to 1
Cylinder Sleeves .....	Removable Wet Type
No Load Governed Speed .....	2330 to 2420 RPM
Rated Engine Speed .....	2200 RPM
Engine Idling Speed .....	750 to 800 RPM
*Valve Tappet Clearance (Exhaust) .....	(Cold) .031 Inch (0.80mm)
	(Intake) (Cold) .014 Inch (0.35mm)

### Piston and Connecting Rod

Rings per Piston .....	4
Number of Compression Rings .....	3
Number of Oil Rings .....	1
Type Pins .....	Full Floating Type
Type Bearings .....	Replaceable Steel Back With Lead-Bronze Liners

### Main Bearings

Number of Bearings .....	7
Type Bearings .....	Replaceable, Steel Back with Lead-Bronze Liners

### Engine Lubrication System

Oil Pressure .....	65 to 87 PSI (448 to 600 kPa)
	Engine Warm and Operating at Rated Engine Speed
Type System .....	Pressure and Spray Circulation
Oil Pump .....	Gear Type
Oil Filtration .....	Oil Cleaned Continuously by Cyclonic Separation and Centrifugal Cleaner.
Oil Capacity .....	28.4 U.S. Qts. (26.9 litres)
Oil Cooling .....	Oil Cooler Flange Mounted to Oil Cleaner; Water Cooling.
Turbocharger Oil Filter .....	Full Flow Spin-On Type

Thank you so much for reading.  
Please click the “Buy Now!”  
button below to download the  
complete manual.



After you pay.

You can download the most  
perfect and complete manual in  
the world immediately.

Our support email:

[ebooklibonline@outlook.com](mailto:ebooklibonline@outlook.com)