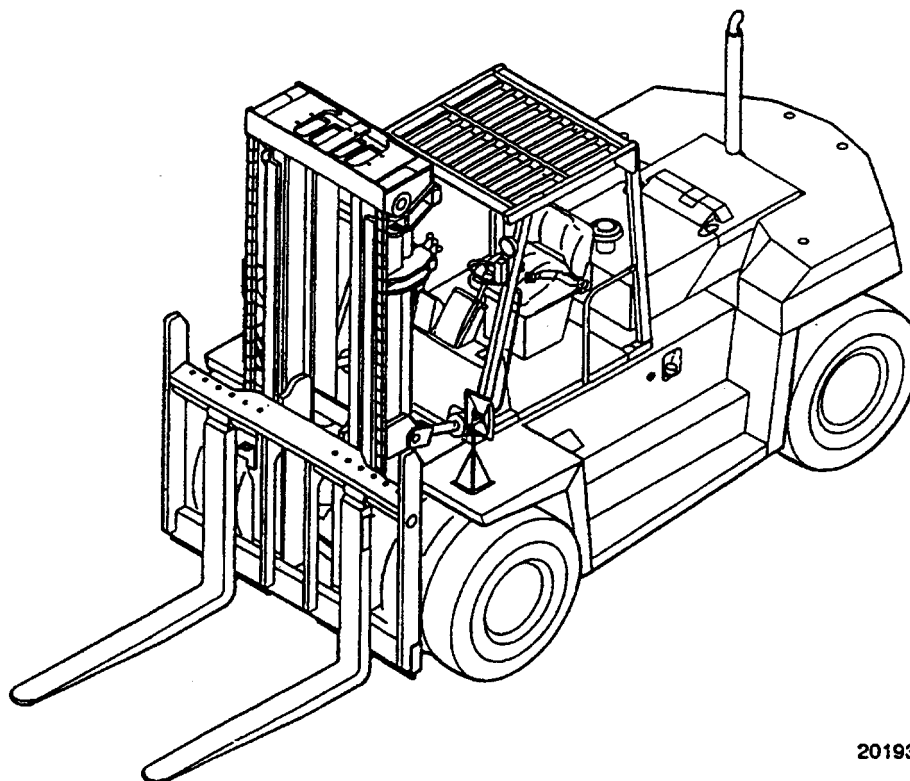


MODEL VIEW

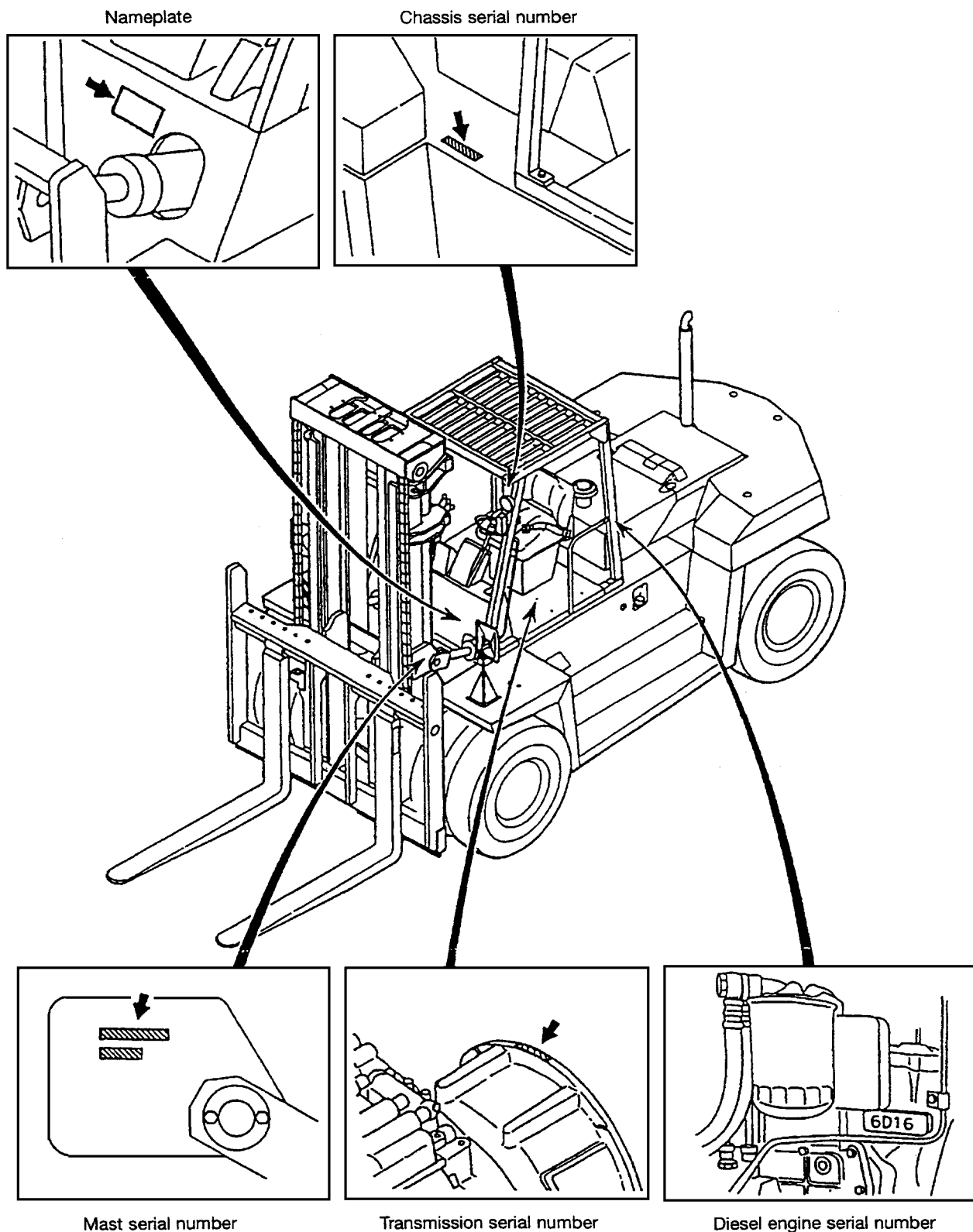
201936

TRUCK MODELS COVERED

This Service Manual furnishes servicing and maintenance information for the following trucks:

| Truck model | Transmission | Designation-Serial number | Engine mounted |
|-------------|--------------|---------------------------|-------------------------------|
| DP100 | Powershift | 3DP00012-up | Mitsubishi 6D16 diesel engine |
| DP115 | | 4DP00011-up | |
| DP135 | | 5DP00013-up | |
| DP150 | | 6DP00013-up | |

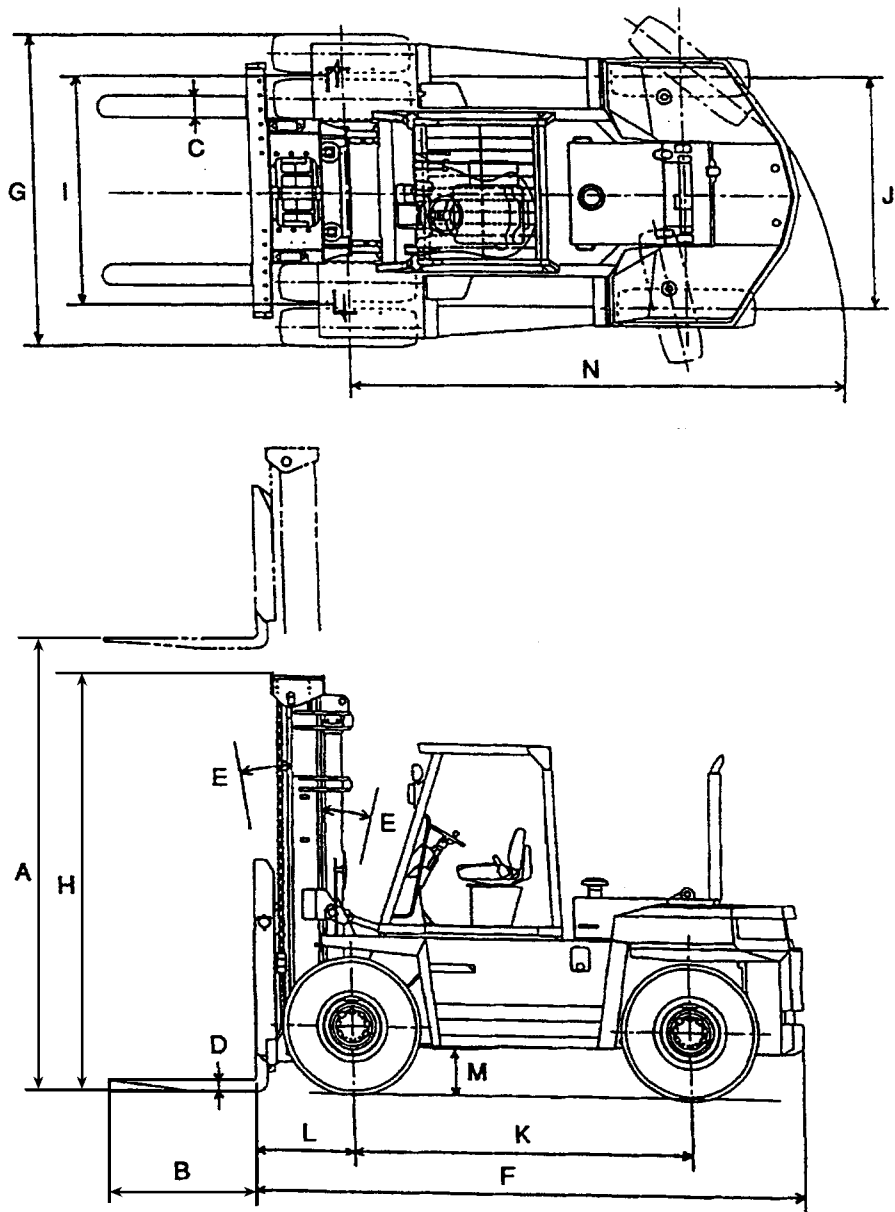
NAMEPLATE AND SERIAL NUMBER LOCATIONS



TECHNICAL DATA

| Truck model | | | DP100 | DP115 | DP135 | DP150 | |
|---|--|--------------|---|---------------------------|---------------------------|---------------------------|--------------------|
| Item | | | | | | | |
| Type | | | Standard (with 3-speed powershift transmission) | | | | |
| General | Capacity/load center, kgf/mm (lbf/in.) | | 10 000/600 (22 000/24) | 11 500/600 (25 000/24) | 13 500/600 (30 000/24) | 15 000/600 (33 000/24) | |
| | Lift, mm (in.) | | | 3300 (130) | | | |
| | Lift speed (empty/loaded), mm/sec (fpm) | | 360/330 (71/65) | 360/340 (71/67) | 310/290 (61/57) | 310/280 (61/55) | |
| | Lowering speed (empty/loaded), mm/sec (fpm) | | 500/450 (98/89) | | 420/380 (83/75) | | |
| | Tilt angle (forward - backward) | | 15° - 12° | | | | |
| | Free lift, mm (in.) | | 0 | | | | |
| Performance | Travel speeds (empty/loaded), km/h (mph) | | Forward | 31.5/24.5 (20/15) | | 33.0/22.0 (20/14) | |
| | | | Reverse | | | | |
| | Minimum turning radius, mm (in.) | | 4000 (157) | 4060 (160) | 4160 (164) | 4550 (179) | |
| | Turning angle | | Inside | 75.4° | | | |
| | | | Outside | 49.7° | | | |
| | Minimum aisle 90° stack, mm (in.) | | 3550 (140) | 3590 (141) | 3680 (145) | 3830 (151) | |
| Gradeability (rated load) | At 1.6 km/h (1 mph) | | 32% | 29% | 23% | | |
| Tires, size and inflation, kgf/cm² (psi) [kPa] | | Front (dual) | 10.00-20-14 NHS | 10.00-20-16 NHS | 12.00-20-18 NHS | | |
| | | Rear | 7.0 (100) [686] | 8.0 (114) [785] | 8.0 (114) [785] | | |
| Weight and axle load | Empty, kg (lb) | | Weight | 14 450 (31 860) | 15 330 (33 800) | 17 320 (38 190) | 17 760 (39 160) |
| | | | Front axle load | 7090 (15 630) | 6950 (15 320) | 7460 (16 450) | 7940 (17 510) |
| | | | Rear axle load | 7360 (16 230) | 8380 (18 480) | 9860 (21 740) | 9820 (21 650) |

DIMENSIONS (APPROXIMATE)



206177

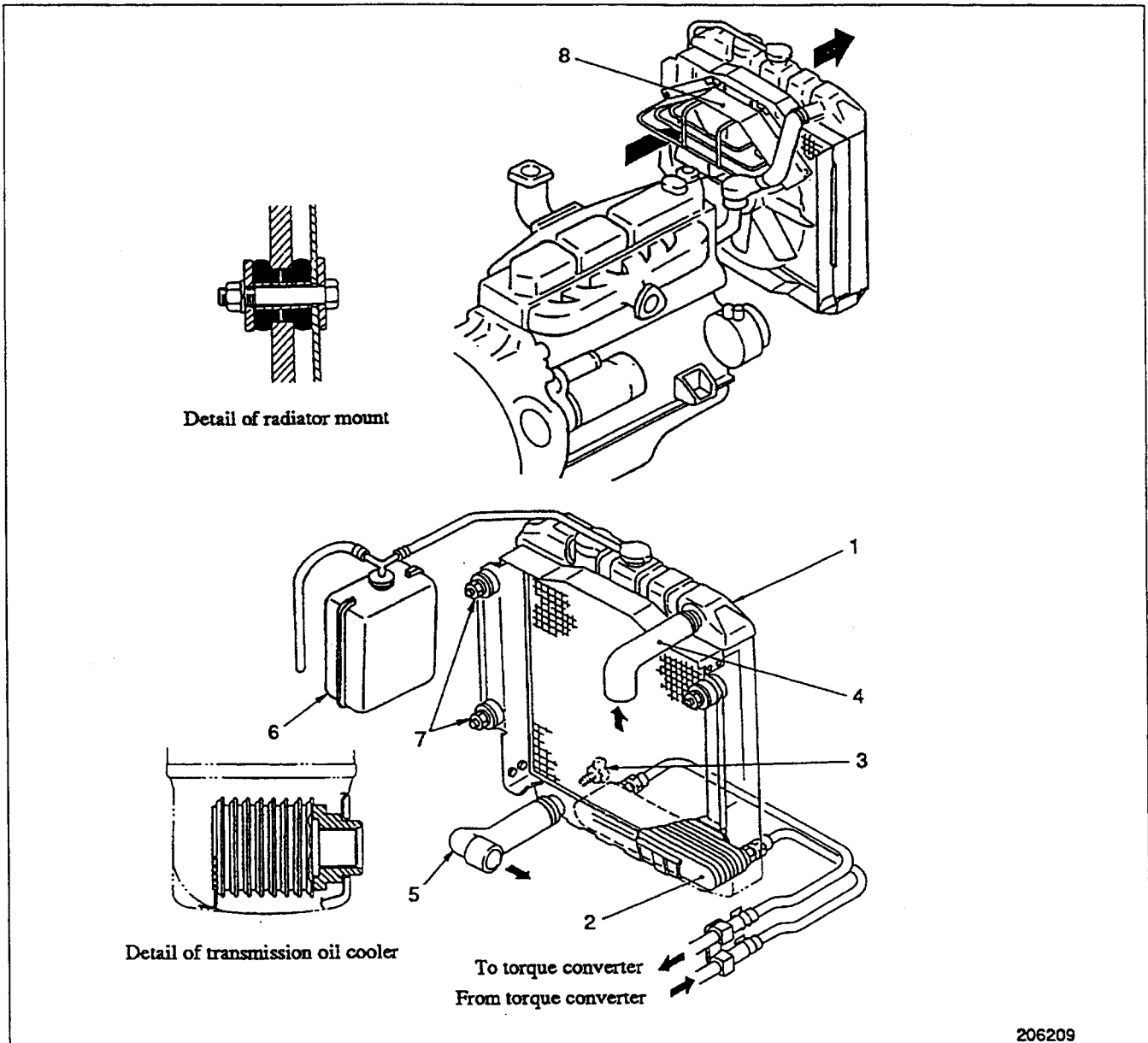
Unit: mm (in.)

| Ref. No. | Item | Truck model | DP100 | DP115 | DP135 | DP150 |
|-------------|---|-------------|------------|------------|------------|------------|
| A | Lift | | 3300 (130) | | | |
| B | Fork length | | 1220 (48) | | | |
| C | Fork width | | 180 (7.1) | | | |
| D | Fork thickness | | 70 (2.8) | | 90 (3.5) | |
| E | Tilt angle (forward – backward) | | 15° - 12° | | | |
| F | Overall length | | 4295 (169) | 4370 (172) | 4530 (178) | 4830 (190) |
| G | Overall width (outside of tires) | | 2515 (99) | | 2600 (102) | |
| H | Overall height (to top of mast lowered) | | 3140 (124) | | 3485 (137) | |
| I | Tread (front) | | 1900 (75) | | 1905 (75) | |
| J | Tread (rear) | | 1930 (76) | | 1890 (74) | |
| K | Wheelbase | | 2800 (110) | | | 3100 (122) |
| L | Front overhang | | 753 (29.6) | | 792 (31.2) | 794 (31.3) |
| M | Ground clearance (at frame) | | 220 (8.7) | | 260 (10.2) | |
| N | Minimum turning radius | | 4000 (157) | 4060 (160) | 4160 (164) | 4550 (179) |

SPECIFICATIONS

| <div>Truck model</div> <div>Item</div> | DP100 | DP115 | DP135 | DP150 |
|--|--|-------|-------|-------|
| Type | Forced circulation | | | |
| Radiator, Type | Corrugated fin with pressure cap (with built-in transmission oil cooler) | | | |
| Oil cooler, type | Plate fin | | | |
| Capacity, complete system, liter (U.S. gal.) | 23 (6) | | | |

DESCRIPTION



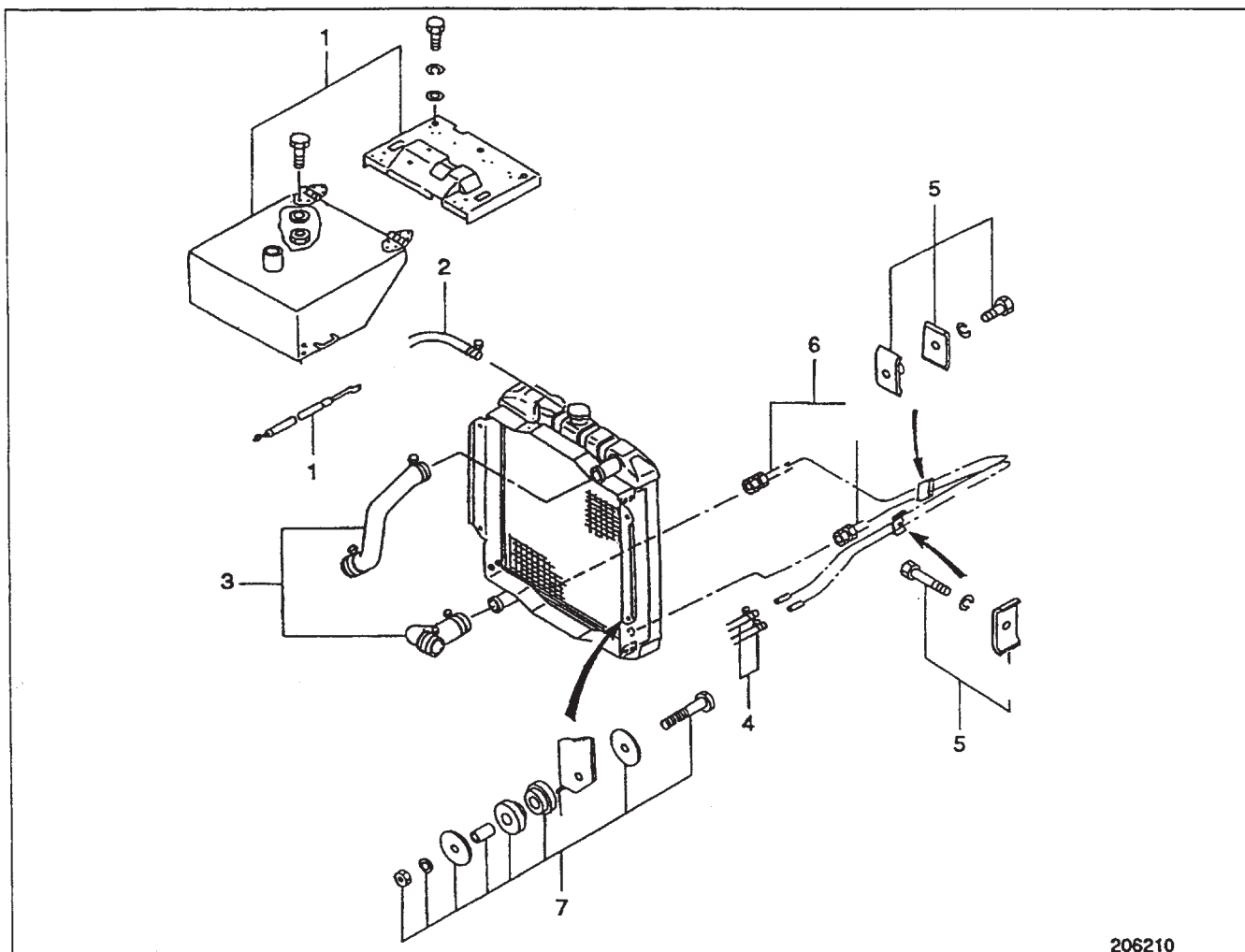
- | | |
|---------------------------|-------------------------|
| 1 Radiator | 5 Radiator hose (lower) |
| 2 Transmission oil cooler | 6 Reserve tank |
| 3 Drain cock | 7 Radiator guard |
| 4 Radiator hose (upper) | 8 Fan guard |

The radiator with a tube-and-fin type core comes standard. The fins are corrugated. The cooling fan is of pusher type and has eight blades to provide high cooling efficiency. The lower tank has a built-in

transmission oil cooler which, in operation, is constantly removing heat from the transmission oil returning from the torque converter.

REMOVAL AND INSTALLATION

Radiator



206210

Removal sequence

- | | |
|---|---|
| 1 Gas-filled cylinder, engine hood and radiator cover | 5 Clamp |
| 2 Reserve tank hose | 6 Transmission oil cooler pipes |
| 3 Radiator hoses (upper and lower) | 7 Radiator mount [Grommet, collar, washers, bolt and nut] |
| 4 Transmission oil cooler hoses | |

Start by:

- Remove the gas-filled cylinder and engine hood.
- Remove the radiator cover.
- Loosen the radiator drain cock to drain coolant from the radiator.

Suggestions for removal

- (1) Fasten a hoist to the radiator and sling the radiator.

| | |
|--------------------|---------------|
| Weight of radiator | 30 kg (66 lb) |
|--------------------|---------------|

- (2) Remove the radiator mounts (at 4 places) and lift off the radiator.

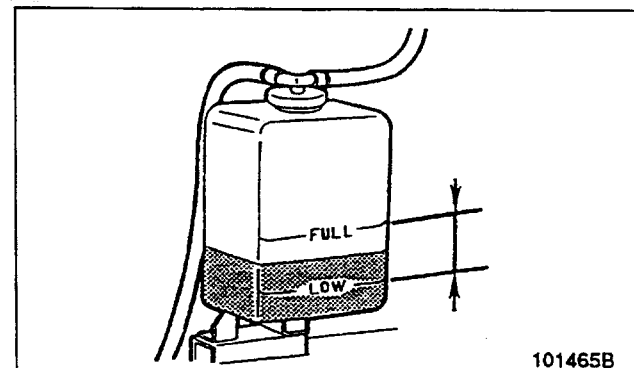
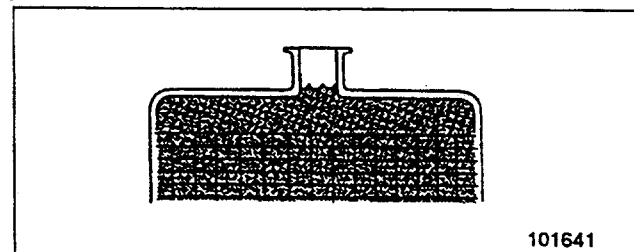
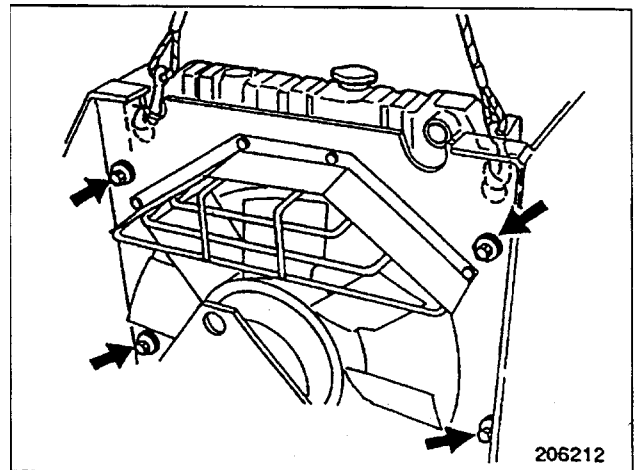
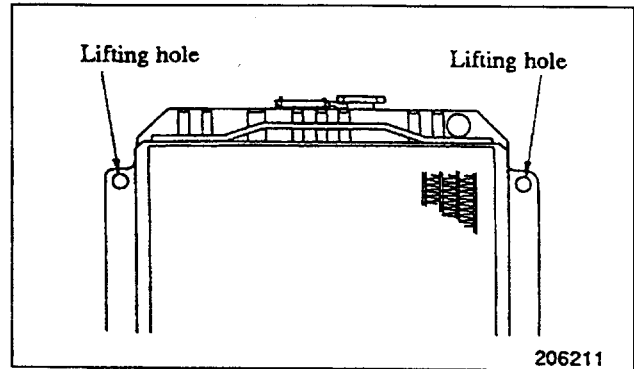
Inspection

- (1) Blow dirt and bugs, if any, from the radiator fins with compressed air. Be careful not to bend the fins because this will decrease cooling efficiency.
- (2) Replace the radiator if the fins are damaged beyond repair.
- (3) Check the rubber cushions of the radiator mounts for condition. Replace them if damaged or deteriorated.
- (4) Check the radiator hoses, upper and lower, for condition. Replace them if defective.

Installation

To install, follow the reverse of removal sequence.

- (1) Slide the hoses on to the tubes of the radiator and tighten all the clamps. Make sure the hoses are properly clamped at flared portions of the tube.
- (2) Fill the cooling system with coolant to the correct level. Start the engine and, with the engine running at low idle, listen for any abnormal noise. Check to be sure the coolant level in the reserve tank is correct.



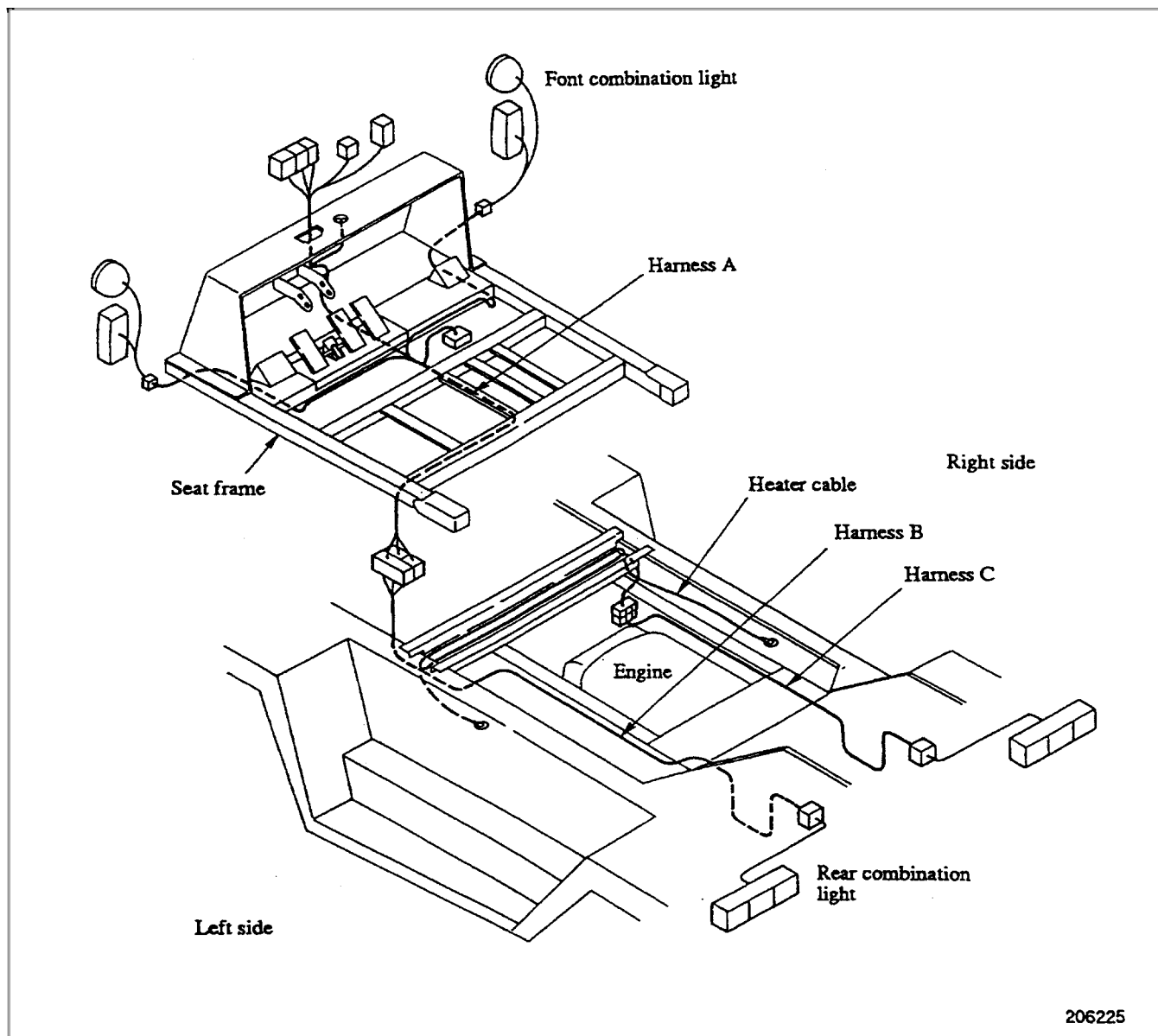
TROUBLESHOOTING

| Problem | Cause | Correction |
|--------------------------------|---|---|
| Coolant leaks from radiator | a) Radiator corroded b) Hose clamps loose c) Upper or lower hose deteriorated due to aging d) Drain cock defective e) Cracks in coolant passage in engine | Repair or replace. Retighten or replace. Replace. Replace. Check and repair. |
| Cooling system overheats | a) Debris in radiator fin b) Radiator fins distorted c) Water pump belt loose d) Thermostat defective | Clean. Repair or replace. Readjust. Check for elongation or cracks due to aging and replace if necessary. Repair or replace. |
| Oil leaks from oil cooler hose | a) Upper or lower hose deteriorated due to aging b) Hose clamps loose c) Oil cooler corroded | Replace. Retighten or replace. Repair or replace. |

SPECIFICATIONS

| Truck model | | DP100 | DP115 | DP135 | DP150 |
|-----------------------------------|--|--|-------|-------|-------|
| Item | | | | | |
| Battery | Model nomenclature – No. of batteries | 95E41R — 2 | | | |
| | Voltage, V | 12 | | | |
| | Capacity, Ah | 80 | | | |
| Direction lever | | Electric | | | |
| Console box | | With central vehicle monitoring system | | | |
| Automatic transmission controller | | Electronic control unit (ECU) | | | |
| Starter switch | | Anti-restart type | | | |
| Lights | | See Light Bulb Specifications. | | | |

LOCATION OF COMPONENTS



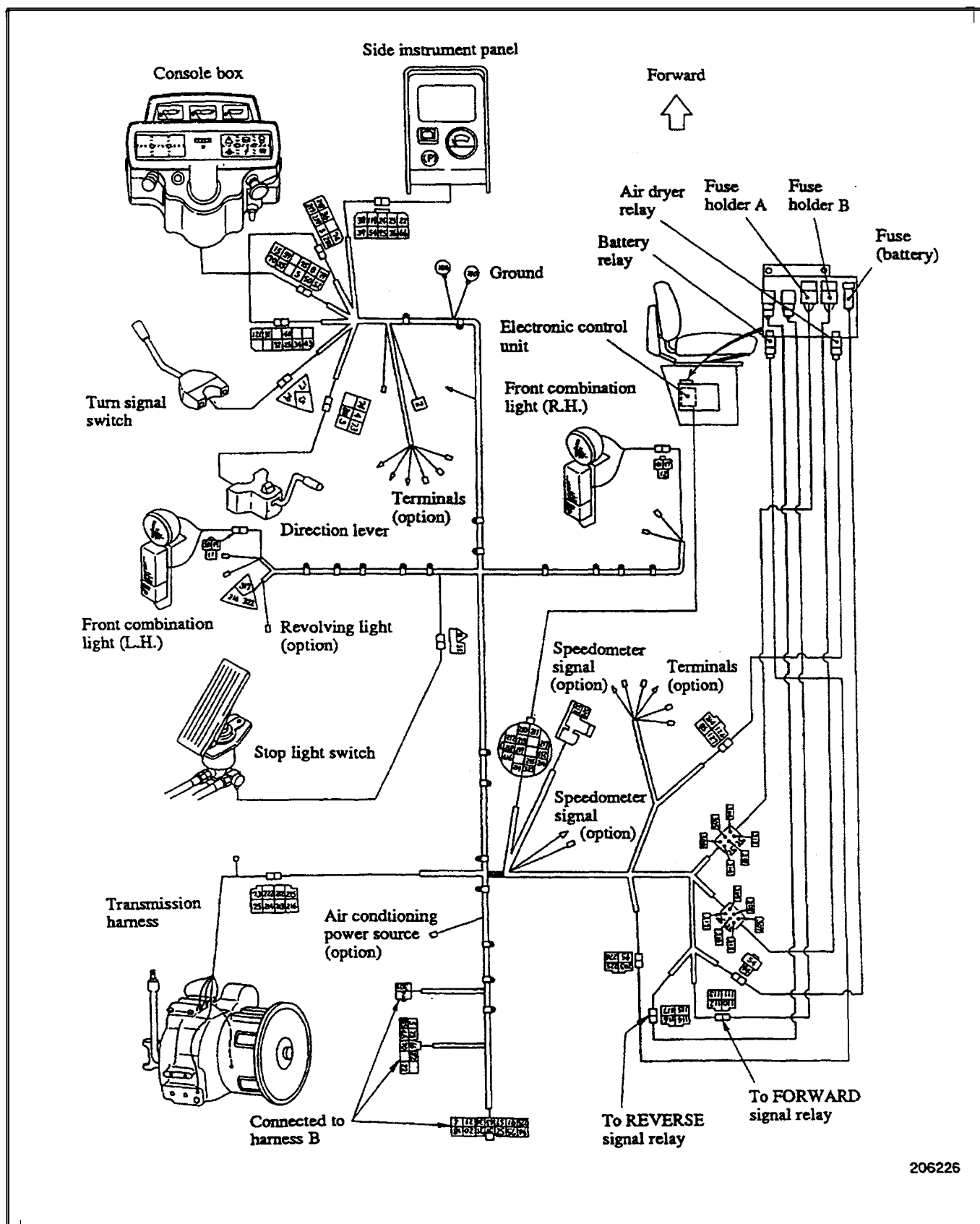
For the components to which harnesses A, B and C are connected, see the pages which follows.



CAUTION

Clamp the harnesses away from moving parts or sharp edges. Repair frayed harnesses with vinyl tape.

Harness A



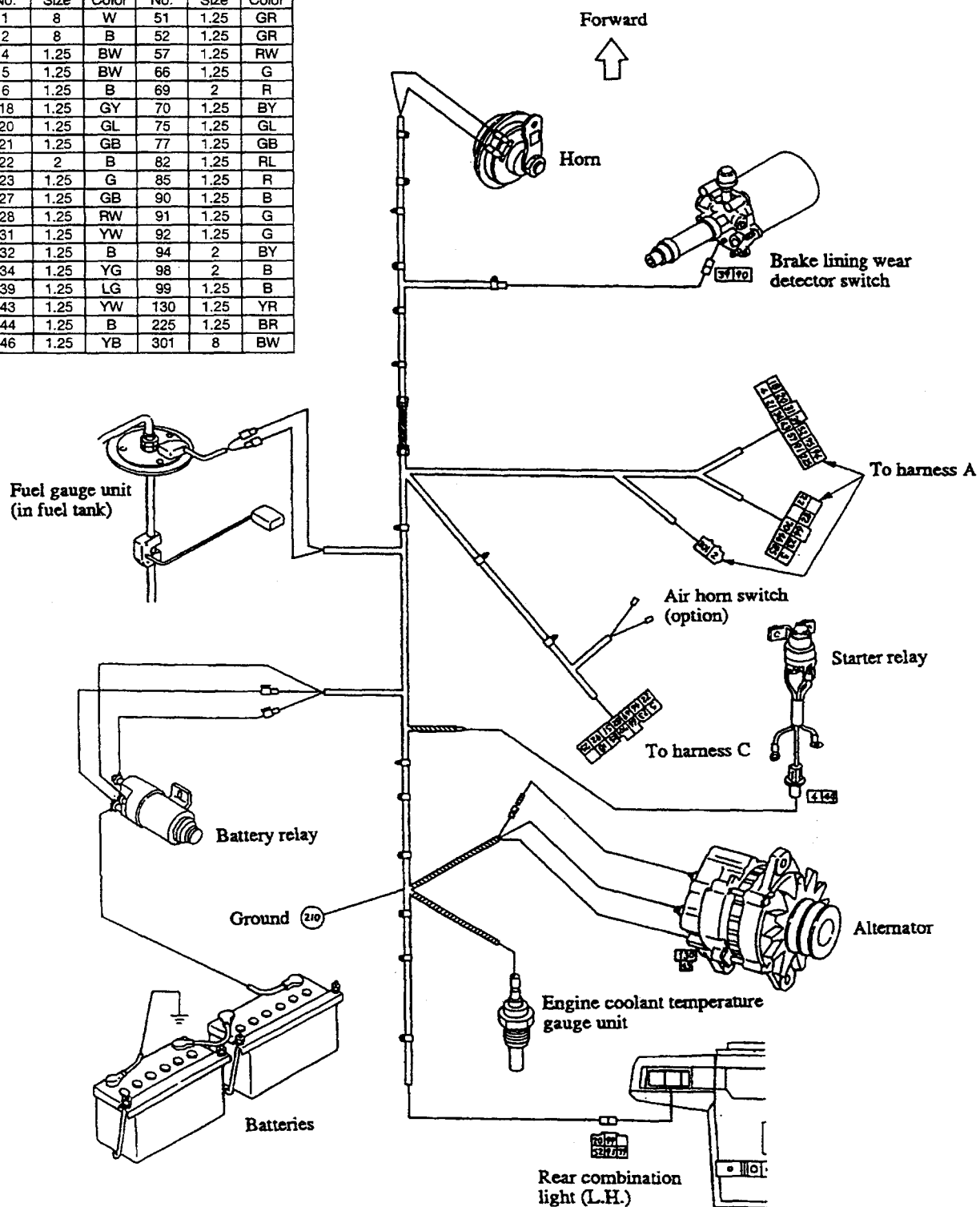
206226

Circuit numbers and color codes of harness A

| No. | Wire size | Color | No. | Wire size | Color | No. | Wire size | Color |
|-----|-----------|--------------|-----|-----------|--------------|-----|-----------|--------------|
| 2 | 8 | Black | 70 | 1.25 | Black/yellow | 219 | 1.25 | White/black |
| 3 | 1.25 | Black/red | 72 | 1.25 | Black | 220 | 1.25 | Green/blue |
| 4 | 1.25 | Black/white | 73 | 1.25 | Green/yellow | 221 | 1.25 | Green/red |
| 5 | 1.25 | Black/white | 74 | 1.25 | Green/blue | 222 | 1.25 | Green/blue |
| 8 | 1.25 | Red | 75 | 1.25 | Green/blue | 223 | 1.25 | Green/red |
| 11 | 1.25 | Red | 79 | 1.25 | Red/black | 224 | 1.25 | Green/yellow |
| 12 | 1.25 | Red | 82 | 1.25 | Red/blue | 225 | 1.25 | Green/red |
| 13 | 1.25 | Red/white | 85 | 1.25 | Red | 226 | 1.25 | Black |
| 14 | 1.25 | Red/white | 91 | 1.25 | Green | 301 | 8 | Black/white |
| 15 | 1.25 | Green/red | 94 | 2 | Black/yellow | 304 | 2 | Black/white |
| 17 | 1.25 | Green/yellow | 95 | 1.25 | Black/red | 305 | 2 | Black/white |
| 18 | 1.25 | Green/yellow | 110 | 1.25 | Green/yellow | 306 | 2 | Black/white |
| 19 | 1.25 | Green/blue | 111 | 1.25 | Black | 307 | 2 | White/red |
| 20 | 1.25 | Green/blue | 112 | 1.25 | Red/blue | 308 | 2 | White/black |
| 21 | 1.25 | Green/black | 113 | 1.25 | Black | 309 | 1.25 | White/blue |
| 22 | 2 | Black | 114 | 1.25 | Green/blue | 312 | 2 | Black/white |
| 23 | 1.25 | Yellow | 115 | 1.25 | Black | 313 | 2 | Black/yellow |
| 24 | 1.25 | Blue | 116 | 1.25 | Blue/white | 314 | 1.25 | Black/red |
| 25 | 1.25 | Yellow/white | 117 | 1.25 | Black | 315 | 2 | White/red |
| 31 | 1.25 | Yellow/white | 119 | 1.25 | Green/red | 316 | 2 | White/black |
| 34 | 1.25 | Yellow/green | 121 | 1.25 | Green/red | 317 | 2 | White/blue |
| 36 | 1.25 | Black/white | 126 | 1.25 | Blue | 320 | 2 | Red/white |
| 38 | 1.25 | Blue | 127 | 1.25 | Black | 322 | 2 | White/blue |
| 39 | 1.25 | Blue/green | 200 | 1.25 | Blue | 323 | 1.25 | Black/yellow |
| 43 | 1.25 | Yellow/white | 203 | 1.25 | Green/white | 324 | 1.25 | Black |
| 46 | 1.25 | Yellow/black | 210 | 1.25 | Red/white | 327 | 1.25 | White |
| 49 | 1.25 | Green/red | 211 | 1.25 | Black | 328 | 1.25 | Black |
| 50 | 1.25 | Green/red | 212 | 1.25 | Red/yellow | 332 | 1.25 | Yellow/red |
| 52 | 1.25 | Green/red | 213 | 1.25 | Red/black | 334 | 1.25 | Yellow/green |
| 54 | 1.25 | Green/white | 214 | 1.25 | Black | 335 | 1.25 | Red/yellow |
| 55 | 1.25 | Red | 215 | 1.25 | Red/green | 336 | 1.25 | White/red |
| 57 | 1.25 | Red/white | 216 | 1.25 | Black/red | 338 | 1.25 | Red/yellow |
| 65 | 2 | Black | 217 | 1.25 | Black/white | 339 | 1.25 | Black |
| 66 | 1.25 | Green | 218 | 1.25 | White/red | | | |

Harness B (on the left side of engine room)

| No. | Size | Color | No. | Size | Color |
|-----|------|-------|-----|------|-------|
| 1 | 8 | W | 51 | 1.25 | GR |
| 2 | 8 | B | 52 | 1.25 | GR |
| 4 | 1.25 | BW | 57 | 1.25 | RW |
| 5 | 1.25 | BW | 66 | 1.25 | G |
| 6 | 1.25 | B | 69 | 2 | R |
| 18 | 1.25 | GY | 70 | 1.25 | BY |
| 20 | 1.25 | GL | 75 | 1.25 | GL |
| 21 | 1.25 | GB | 77 | 1.25 | GB |
| 22 | 2 | B | 82 | 1.25 | RL |
| 23 | 1.25 | G | 85 | 1.25 | R |
| 27 | 1.25 | GB | 90 | 1.25 | B |
| 28 | 1.25 | RW | 91 | 1.25 | G |
| 31 | 1.25 | YW | 92 | 1.25 | G |
| 32 | 1.25 | B | 94 | 2 | BY |
| 34 | 1.25 | YG | 98 | 2 | B |
| 39 | 1.25 | LG | 99 | 1.25 | B |
| 43 | 1.25 | YW | 130 | 1.25 | YR |
| 44 | 1.25 | B | 225 | 1.25 | BR |
| 46 | 1.25 | YB | 301 | 8 | BW |



206227

Thank you so much for reading.
Please click the “Buy Now!”
button below to download the
complete manual.



After you pay.

You can download the most
perfect and complete manual in
the world immediately.

Our support email:

ebooklibonline@outlook.com