

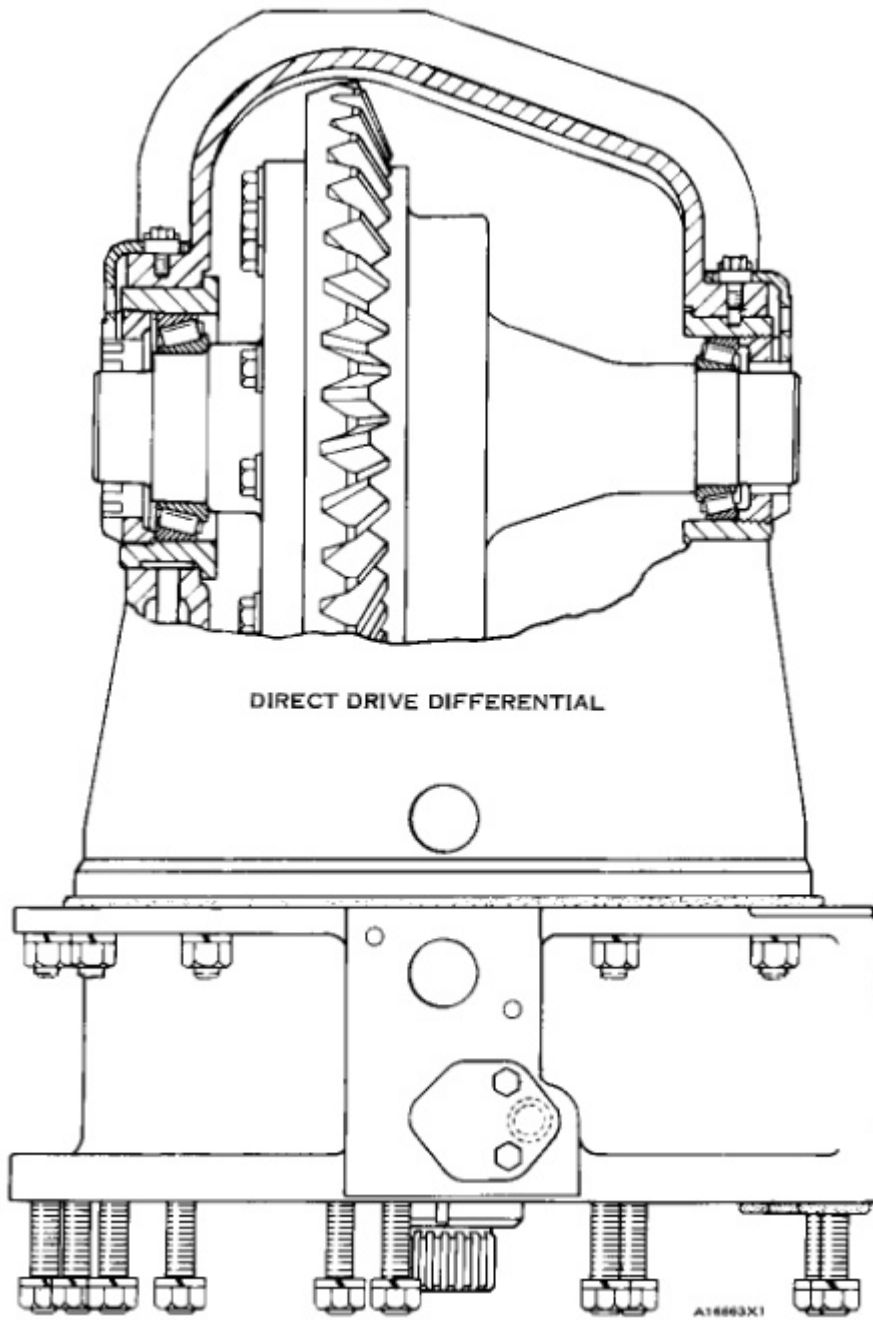


# Service Repair Manual

## **Models**

140G Motor Grader

---

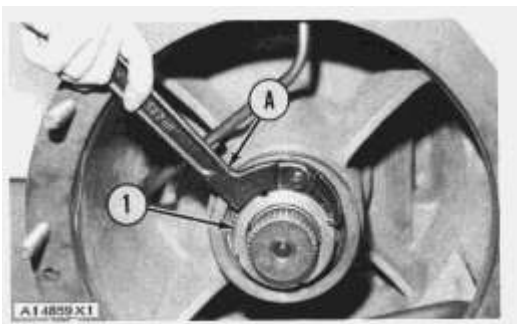


**Disassemble Differential (Direct Drive)**

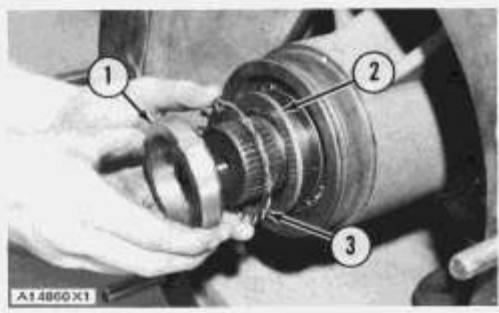
Tools Needed		A	B	C	D
1P2853	Spanner Wrench	1			
5F7369	Leg		2		
8H684	Ratchet Box Wrench		1	1	1
3H465	Plate		4		4
5F7366	Screw		1	1	1
5F7351	Nut		1	1	1
5F7353	Washer		1	6	1
1B4207	Nut		2		2
9S9154	Step Plate		1		
8B7548	Crossbar		1	2	1
8B7551	Bearing Puller Attachment		1		1
8B7554	Bearing Cup Puller Attachment			1	
1H3107	Crossbar			1	
1B4209	Nut			4	
3H468	Plate			4	
8B7549	Leg				2

start by:

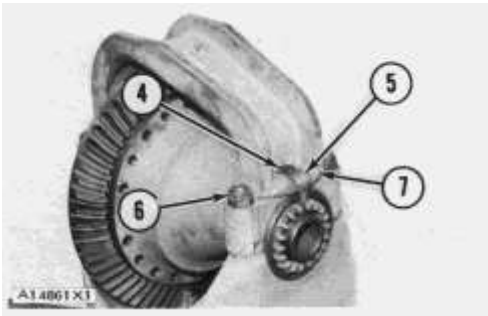
a) remove differential



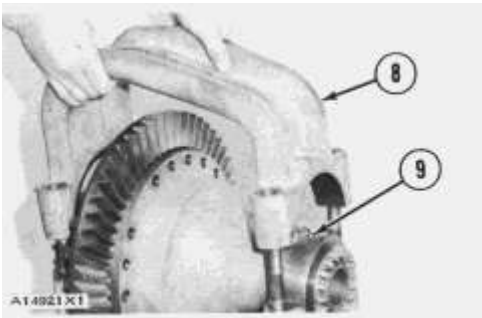
1. Remove all the O-ring seals from the differential. Bend the lock away from nut (1) and remove nut (1) with tool (A).



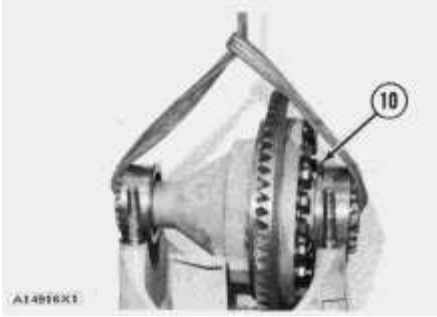
2. Remove lock (2) and washer (3) from the shaft.
3. Put the differential in position with the bevel gear up as shown.



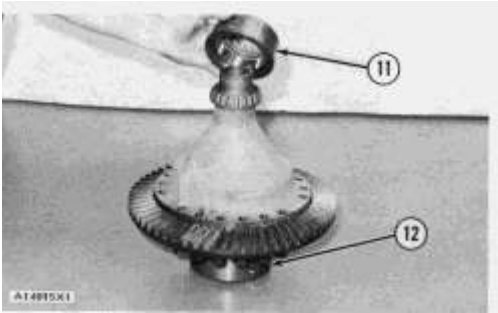
4. Remove wire (7) from each side of the differential. Remove nuts (6) that hold the cap to the carrier.
5. Remove bolt (4) from each side of the differential.
6. Remove lock (5) from each side of the differential.



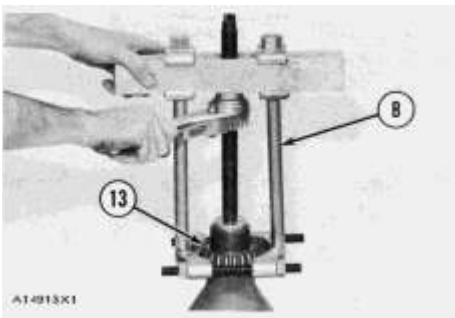
7. Remove cap (8) from the carrier.
8. Remove dowel (9) from each of the cages on the differential.
9. Fasten a hoist and a strap to the differential.



**10.** Remove differential (10). Weight is 160 lb. (73 kg).



**11.** Remove cages (11) and (12). Remove the nuts and the bearing cups from the cages.



**13.** Remove bearing cone (13) with tooling (B).



**14.** Turn the differential on its other end. Put it on blocks as shown. Remove bolts (14) and the washers that hold the hub and the bevel gear to the other hub.

Thank you so much for reading.  
Please click the “Buy Now!”  
button below to download the  
complete manual.



After you pay.

You can download the most  
perfect and complete manual in  
the world immediately.

Our support email:

[ebooklibonline@outlook.com](mailto:ebooklibonline@outlook.com)