



Service Repair Manual

Models

216B SKID STEER LOADER

Product: SKID STEER LOADER

Model: 216B SKID STEER LOADER RLL

Configuration: 216B 226B 232B 242B Skid Steer Loader RLL00001-06799 (MACHINE) POWERED BY 3024C Engine

Disassembly and Assembly C1.1, C1.5 and C2.2 Engines for Caterpillar Built Machines

Media Number -KENR6948-06

Publication Date -01/06/2015

Date Updated -02/08/2018

i07360149

Engine Oil Pump - Install

SMCS - 1304-012

Installation Procedure

Table 1

| Required Tools | | | |
|------------------|-------------|------------------|-----|
| Tool | Part Number | Part Description | Qty |
| A ⁽¹⁾ | 256-4864 | Alignment Tool | 1 |
| A ⁽²⁾ | 301-0285 | Alignment Tool | 1 |

⁽¹⁾ C1.1 engine

⁽²⁾ C1.5 and C2.2 engines

NOTICE

Keep all parts clean from contaminants.

Contaminants may cause rapid wear and shortened component life.

NOTICE

**If the front housing is not installed, do not turn the crankshaft.
Damage to the engine may occur.**

Idler Hub

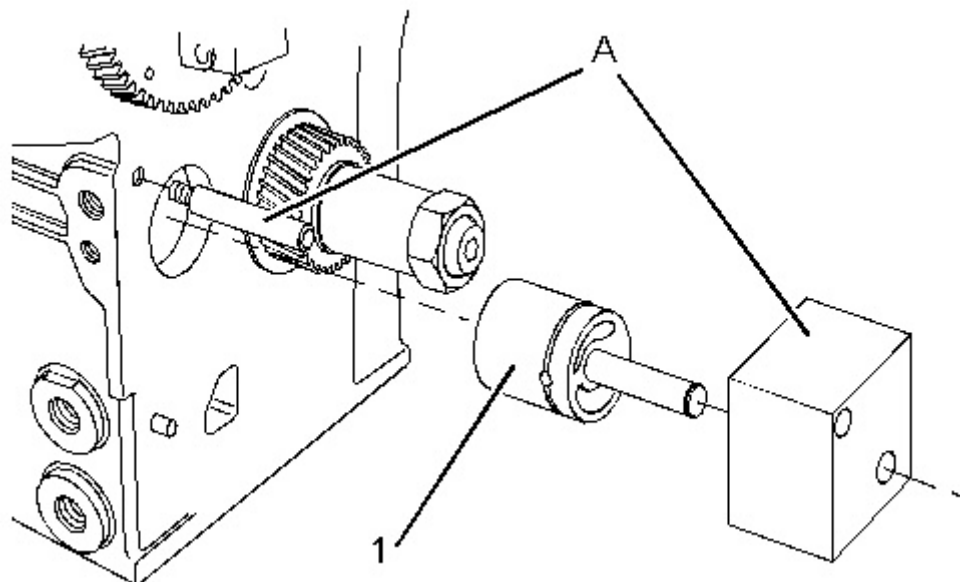
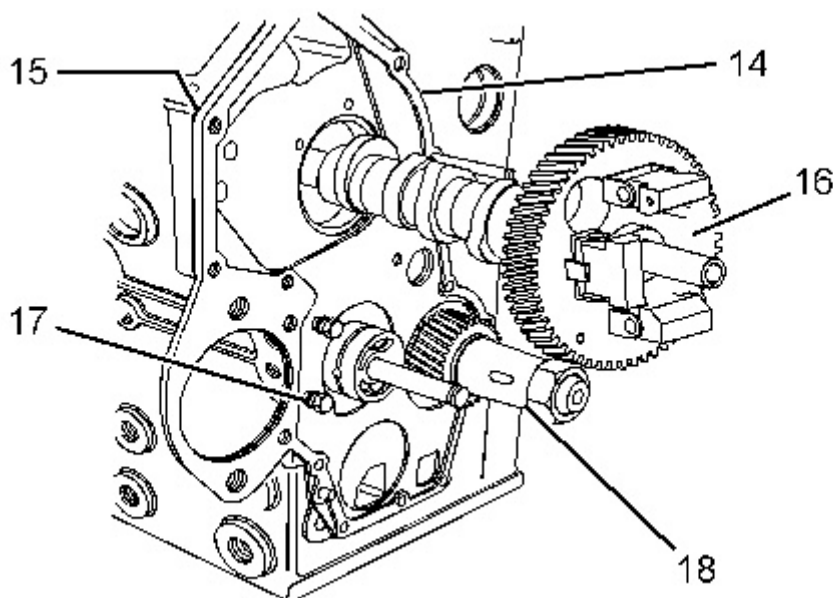


Illustration 1

g01305803

Typical example

1. Install the pin of Tooling (A) to the cylinder block.
2. Install idler hub (1) into the guide plate of Tooling (A). Align the guide plate of Tooling (A) with pin of Tooling (A).
3. Use a hammer to strike the guide plate of Tooling (A). Drive idler hub (1) into the cylinder block until the guide plate contacts the front of the cylinder block.
4. Remove Tooling (A).



5. Install crankshaft (18). Refer to Disassembly and Assembly, "Crankshaft - Install".
6. Position a new joint (15) on the cylinder block. Align plate (14) with the dowels in the cylinder block and install the plate. Install bolts (17) and tighten to a torque of 10 N·m (89 lb in).
7. Install camshaft (18). Refer to Disassembly and Assembly, "Camshaft - Install".

Engine Oil Pump

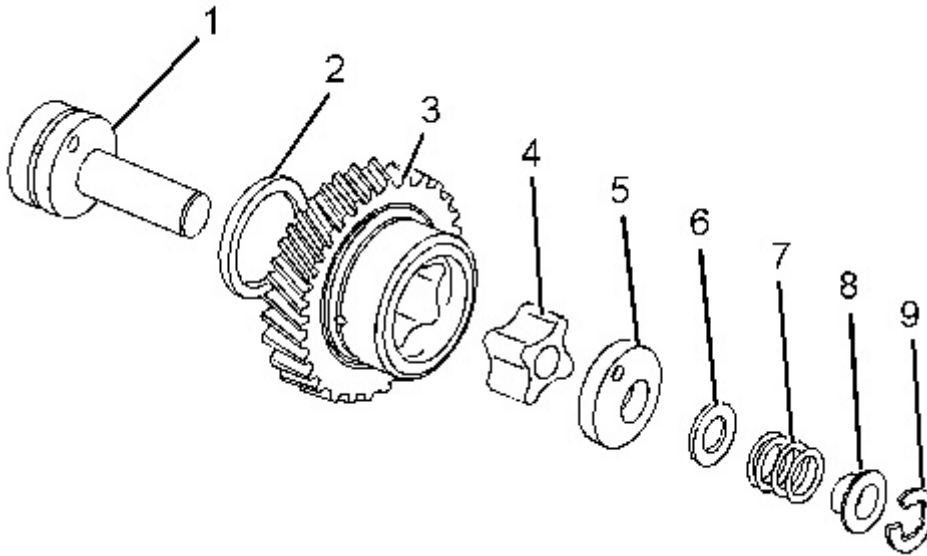


Illustration 3

g01304840

Typical example

1. Install thrust washer (2). Lubricate the thrust washer with clean engine oil.
-

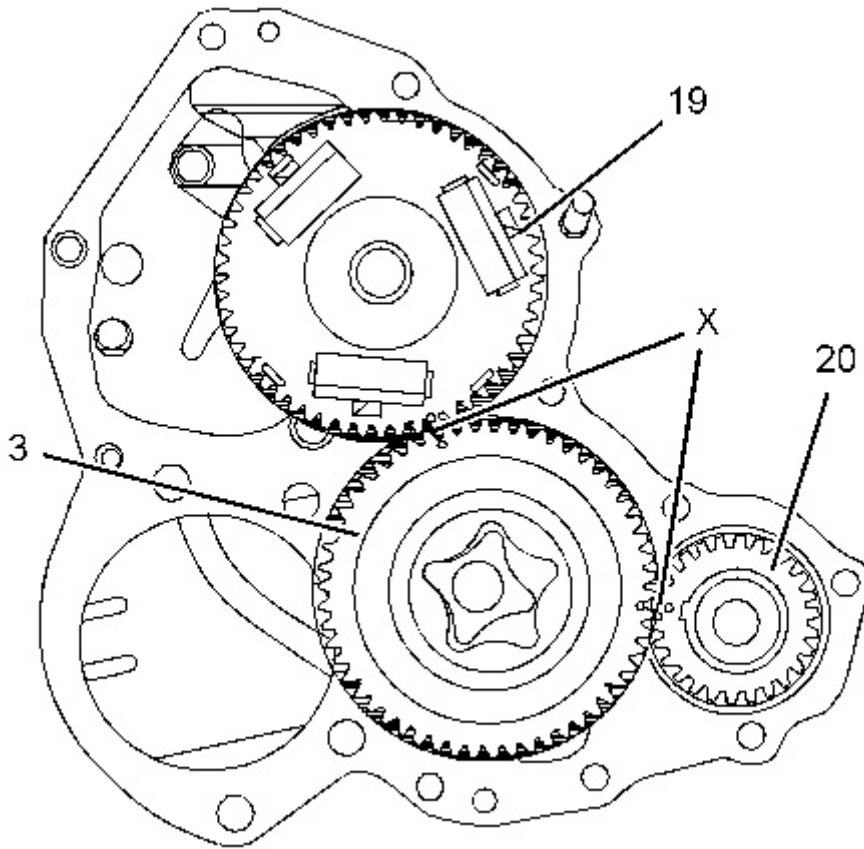


Illustration 4
Typical example

g01305805

! WARNING

Improper assembly of parts that are spring loaded can cause bodily injury.

To prevent possible injury, follow the established assembly procedure and wear protective equipment.

2. Apply clean engine oil to the faces of inner rotor (4) and to the vanes of idler gear (3).
3. Align timing marks (X) on idler gear (3) with the respective timing marks on gears (19) and (20). Install idler gear (3) onto idler hub (1).
4. Install inner rotor (4) to idler gear (3).

! WARNING

Personal injury can result from the release of the spring force.

Thank you so much for reading.
Please click the “Buy Now!”
button below to download the
complete manual.



After you pay.

You can download the most
perfect and complete manual in
the world immediately.

Our support email:

ebooklibonline@outlook.com