



Service Repair Manual

Model

226D SKID STEER LOADER

Product: SKID STEER LOADER

Model: 226D SKID STEER LOADER HRD

Configuration: 226D Skid Steer Loader HRD00001-UP (MACHINE) POWERED BY C2.2 Engine

Disassembly and Assembly C2.2 Engines for Caterpillar Built Machines

Media Number -UENR4528-01

Publication Date -01/09/2015

Date Updated -23/01/2018

i06123449

Fuel Injection Lines - Remove and Install

SMCS - 1252-010

Fuel Injection Lines Remove



Contact with high pressure fuel may cause fluid penetration and burn hazards. High pressure fuel spray may cause a fire hazard. Failure to follow these inspection, maintenance and service instructions may cause personal injury or death.

Table 1

Required Tools			
Tool	Part Number	Part Description	Qty
A	491-1265	Capping Kit	1

NOTICE

Ensure that all adjustments and repairs that are carried out to the fuel system are performed by authorized personnel that have the correct training.

Before beginning ANY work on the fuel system, refer to Operation and Maintenance Manual, "General Hazard Information and High Pressure Fuel Lines" for safety information.

Refer to System Operation, Testing and Adjusting, "Cleanliness of Fuel System Components" for detailed information on the standards of cleanliness that must be observed during ALL work on the fuel system.

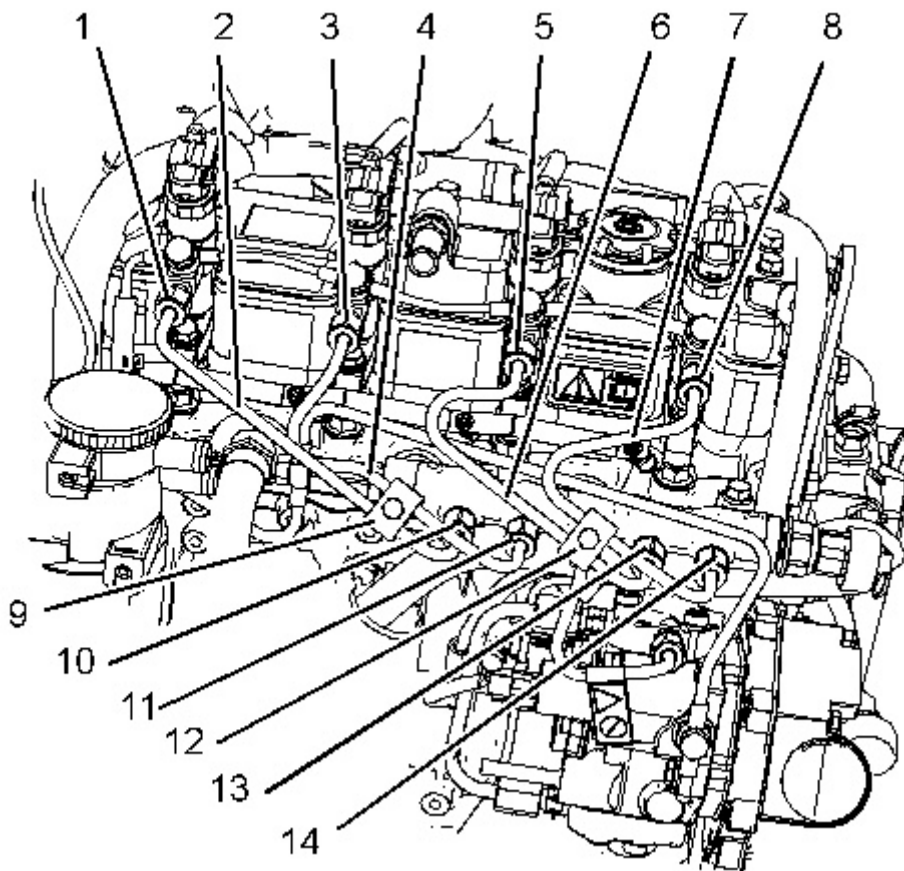
NOTICE

Care must be taken to ensure that fluids are contained during performance of inspection, maintenance, testing, adjusting and repair of the product. Be prepared to collect the fluid with suitable containers before opening any compartment or disassembling any component containing fluids.

Dispose of all fluids according to local regulations and mandates.

Turn the fuel supply to the OFF position. Turn the battery disconnect switch to the OFF position.

If necessary, remove the breather hoses, refer to this Disassembly and Assembly, "Crankcase Breather - Remove and Install" for more information.



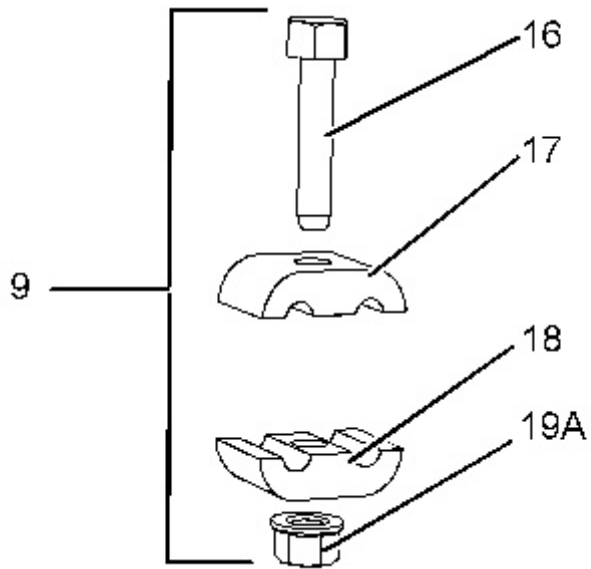


Illustration 2

g03816555

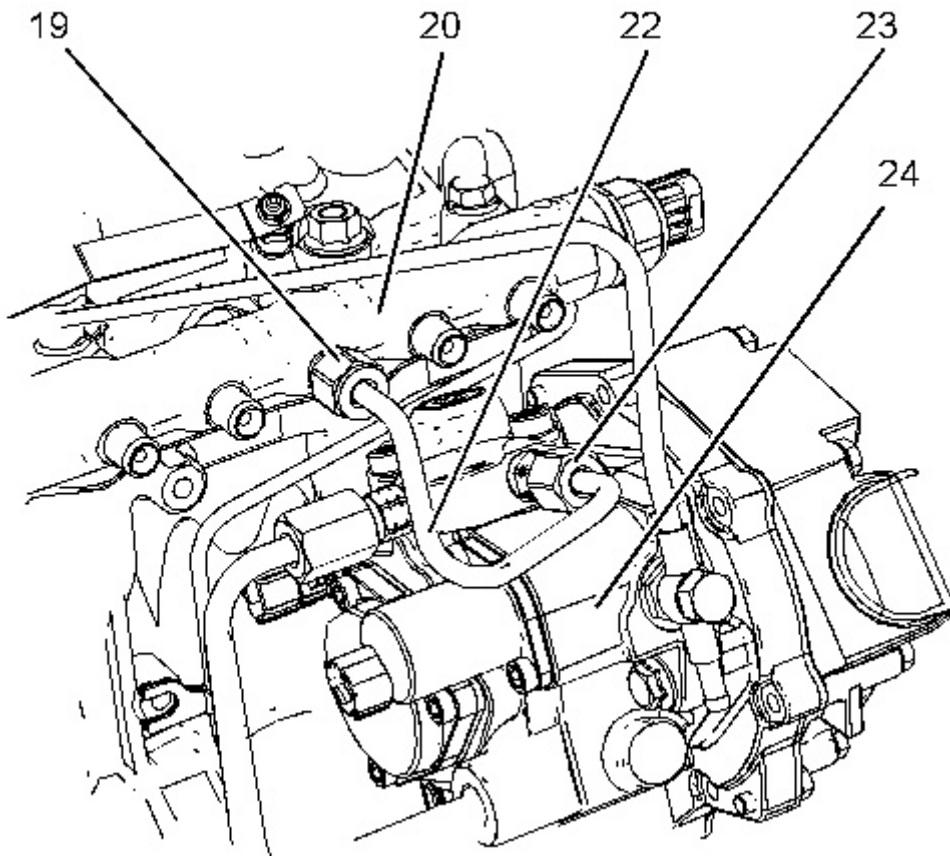


Illustration 3

g03816588

1. Remove clamp (9) and clamp (12).

2. Remove bolt (16) and nut (19A) from clamp assembly (9). Remove isolators (17) and (18). Remove bolt nut and isolators from clamp (12).
3. Disconnect nut (8) and nut (14). Remove fuel injection line (7). Install Tooling (A) to the fuel injector and the fuel manifold (20) as soon as the fuel injection line is removed.
4. Disconnect nut (5) and nut (13). Remove fuel injection line (6). Install Tooling (A) to the fuel injector and the fuel manifold (20) as soon as the fuel injection line is removed.
5. Disconnect nut (3) and nut (11). Remove fuel injection line (4). Install Tooling (A) to the fuel injector and the fuel manifold (20) as soon as the fuel injection line is removed.
6. Disconnect nut (1) and nut (10). Remove fuel injection line (2). Install Tooling (A) to the fuel injector and the fuel manifold (20) as soon as the fuel injection line is removed.
7. **Discard all fuel injection lines**
8. Disconnect nut (19) and nut (23). Remove fuel injection line (22) from manifold (20) and pump (24). Install Tooling (A) to the fuel pump and fuel manifold (20) as soon as the fuel injection line is removed. **Discard the fuel injection line.**

Fuel Injection Lines Install

NOTICE

All plugs and caps must be remain in position until the component is about to be installed

Thank you so much for reading.
Please click the “Buy Now!”
button below to download the
complete manual.



After you pay.

You can download the most
perfect and complete manual in
the world immediately.

Our support email:

ebooklibonline@outlook.com