



# Service Repair Manual

## **Models**

# 297D MULTI TERRAIN LOADER

---

Product: MULTI TERRAIN LOADER

Model: 297D MULTI TERRAIN LOADER BE7

Configuration: 297D/297D XHP Multi Terrain Loader BE700001-UP (MACHINE) POWERED BY C3.8 Engine

## Disassembly and Assembly C3.8 Engines for Caterpillar Built Machines

Media Number -UENR0129-08

Publication Date -01/09/2015

Date Updated -19/05/2016

i04663940

# Rocker Shaft - Assemble

SMCS - 1102-016

## Assembly Procedure

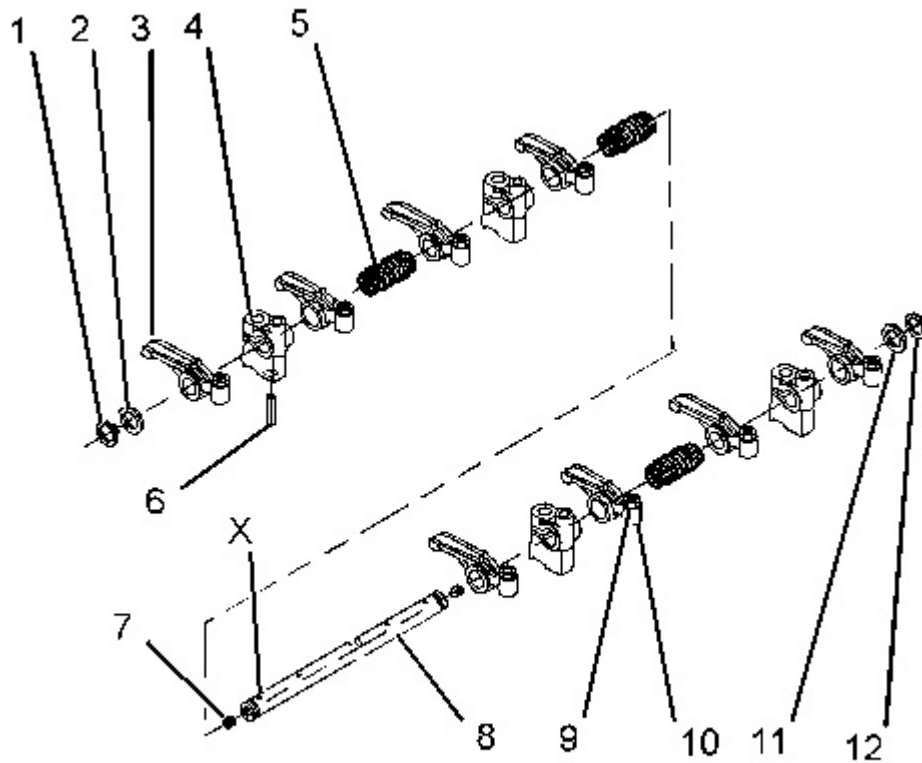
Table 1

Required Tools			
Tool	Part Number	Part Description	Qty
A	1P-1855	Retaining Ring Pliers	1

1. Ensure that all components are clean and free from wear or damage. Refer to Specifications, "Rocker Shaft" for more information. If necessary, replace any components that are worn or damaged.

**Note:** Ensure that all oil holes are free from blockages.

2. Lubricate all of the components with clean engine oil before assembly.
-



---

Illustration 1

g02867541

3. If necessary, install nuts (9) and adjusters (10) onto the rocker arm assemblies. If the original adjusters are reused, ensure that the adjusters are installed in the original positions.
4. Use Tooling (A) to install retaining ring (1) onto the front end of rocker shaft (8). The front end of the rockershaft is identified by the mark at Position (X). Ensure that the mark at position (X) is upward.

 **WARNING**

**Improper assembly of parts that are spring loaded can cause bodily injury.**

**To prevent possible injury, follow the established assembly procedure and wear protective equipment.**

---

5. Install spring (6) onto rocker arm (4). Install plugs (7) onto rocker shaft (8).
6. Install washer (2), rocker arms (3), brackets (4), and springs (5) onto rocker shaft (8).



## WARNING

**Improper assembly of parts that are spring loaded can cause bodily injury.**

**To prevent possible injury, follow the established assembly procedure and wear protective equipment.**

---

7. Install washer (11). Use Tooling (A) to install retaining ring (12) onto the rear end of rocker shaft (8).

**End By:**

- a. Install the rocker shaft and pushrods.
-

Product: MULTI TERRAIN LOADER

Model: 297D MULTI TERRAIN LOADER BE7

Configuration: 297D/297D XHP Multi Terrain Loader BE700001-UP (MACHINE) POWERED BY C3.8 Engine

## Disassembly and Assembly C3.8 Engines for Caterpillar Built Machines

Media Number -UENR0129-08

Publication Date -01/09/2015

Date Updated -19/05/2016

i04663929

### Rocker Shaft and Pushrod - Install

SMCS - 1102-012; 1208-012

### Installation Procedure

1. Ensure that all components are clean and free from wear or damage. Refer to Specifications, "Rocker Shaft" for more information. Replace any components that are worn or damaged.

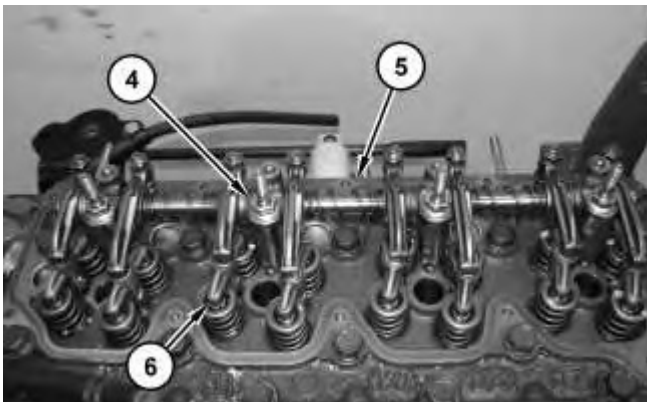
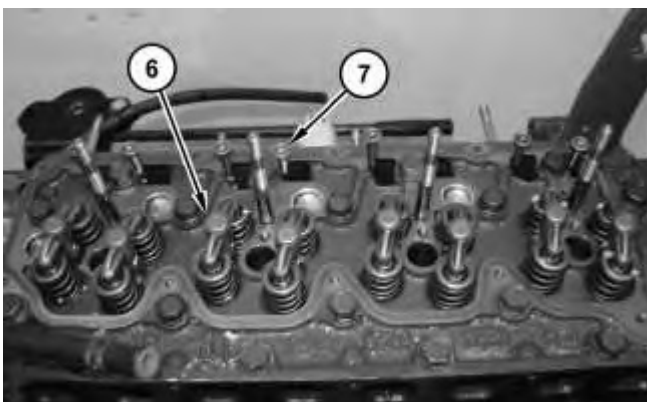


Illustration 1

g02867022



Thank you so much for reading.  
Please click the “Buy Now!”  
button below to download the  
complete manual.



After you pay.

You can download the most  
perfect and complete manual in  
the world immediately.

Our support email:

[ebooklibonline@outlook.com](mailto:ebooklibonline@outlook.com)