



Service Repair Manual

Models

301.6C and 301.8C

Mini Hydraulic Excavator

Product: MINI HYD EXCAVATOR

Model: 301.8C MINI HYD EXCAVATOR JSB

Configuration: 301.6C & 301.8C Mini Hydraulic Excavators JSB00001-UP (MACHINE) POWERED BY L3E Engine

Disassembly and Assembly

301.6C and 301.8C

Mini Hydraulic Excavators

Machine Systems

Media Number -REN9157-01

Publication Date -01/11/2005

Date Updated -06/12/2005

i02355300

Front Idler - Remove and Install

SMCS - 4159-010

Removal Procedure

Start By:

- A. Remove the front idler, the recoil spring, and the hydraulic track adjuster. Refer to Disassembly and Assembly, "Front Idler, Recoil Spring and Hydraulic Track Adjuster - Remove and Install".
-

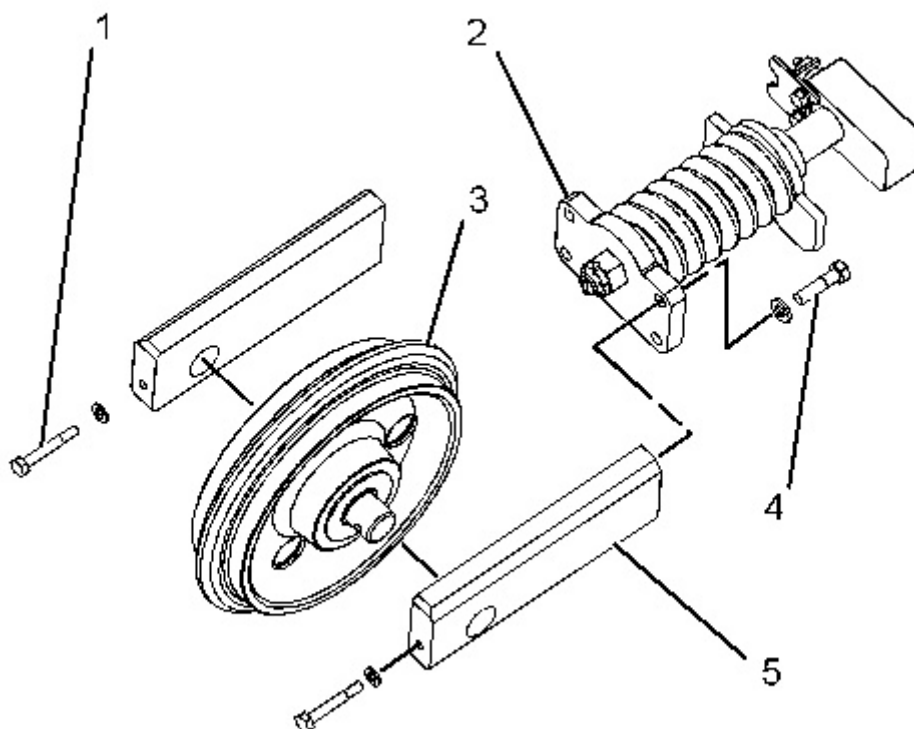


Illustration 1

g01176420

1. Remove bolts (4) and spring assembly (2).
2. Remove bolts (1), supports (5), and front idler (3) .

Installation Procedure

Table 1

Required Tools			
Tool	Part Number	Part Description	Qty
A	9S-3263	Thread Lock Compound	1

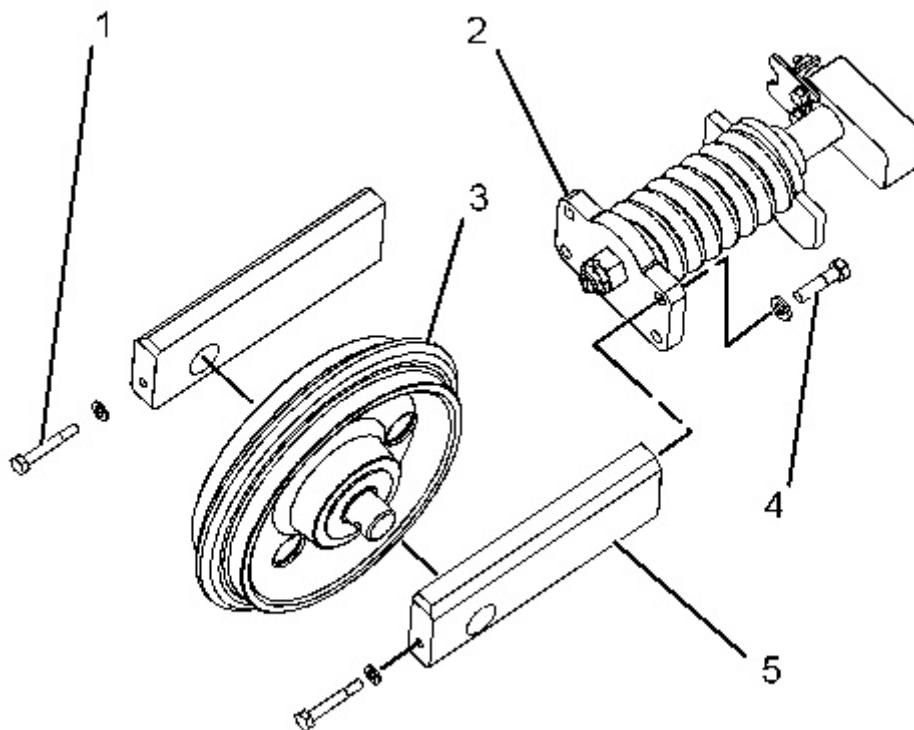


Illustration 2

g01176420

1. Apply Tooling (A) to bolts (1) and (4) .
2. Position front idler (3) and supports (5). Install bolts (1) .
3. Position spring assembly (2) and install bolts (4) .

End By: Install the front idler, the recoil spring, and the hydraulic track adjuster. Refer to Disassembly and Assembly, "Front Idler, Recoil Spring and Hydraulic Track Adjuster - Remove and Install".

Product: MINI HYD EXCAVATOR

Model: 301.8C MINI HYD EXCAVATOR JSB

Configuration: 301.6C & 301.8C Mini Hydraulic Excavators JSB00001-UP (MACHINE) POWERED BY L3E Engine

Disassembly and Assembly

301.6C and 301.8C

Mini Hydraulic Excavators

Machine Systems

Media Number -REN9157-01

Publication Date -01/11/2005

Date Updated -06/12/2005

i02355327

Hydraulic Track Adjusters - Remove and Install

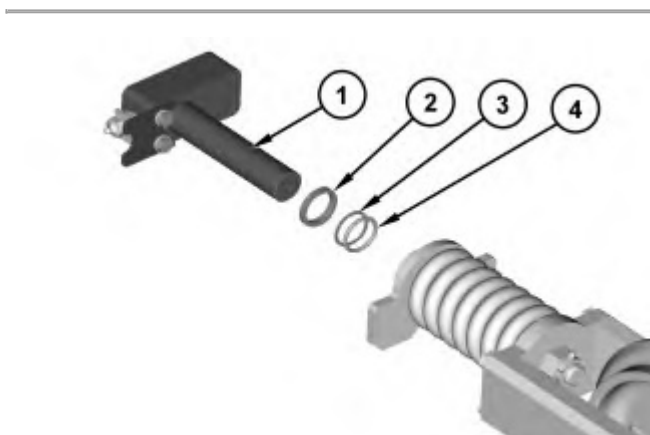
SMCS - 4157-010

Removal Procedure

Start By:

- A. Remove the front idler, the recoil spring, and the hydraulic track adjuster. Refer to Disassembly and Assembly, "Front Idler, Recoil Spring and Hydraulic Track Adjuster - Remove and Install".

Note: Cleanliness is an important factor. Before you begin the disassembly procedure, the exterior of the components should be thoroughly cleaned. This will help to prevent dirt from entering the internal mechanism. Precision components can be damaged by contaminants or by dirt. Perform disassembly procedures on a clean work surface. Keep components covered and protected at all times.



Thank you so much for reading.
Please click the “Buy Now!”
button below to download the
complete manual.



After you pay.

You can download the most
perfect and complete manual in
the world immediately.

Our support email:

ebooklibonline@outlook.com