



# Service Repair Manual

## **Models**

302.2D Mini Hydraulic Excavator

---

Product: MINI HYD EXCAVATOR

Model: 302.2D MINI HYD EXCAVATOR LJJ

Configuration: 302.2D Mini Hydraulic Excavator LJJ00001-UP (MACHINE)

## Disassembly and Assembly 301.7D, 302.2D and 302.4D Mini Hydraulic Excavators

Media Number -UENR3253-01

Publication Date -01/05/2015

Date Updated -12/05/2015

i05212950

# Flywheel - Remove and Install

SMCS - 1156-010

## Removal Procedure

Start By:

- A. Remove the pump drive coupling.



Illustration 1

g03335836

1. Remove bolts (1). Remove flywheel (2).

## Installation Procedure

1. Install flywheel (2) in the reverse order of removal.
  2. Tighten bolts (1) to a torque of 84 N·m (62 lb ft)
-

Product: MINI HYD EXCAVATOR  
Model: 302.2D MINI HYD EXCAVATOR LJJ  
Configuration: 302.2D Mini Hydraulic Excavator LJJ00001-UP (MACHINE)

## **Disassembly and Assembly**

### **301.7D, 302.2D and 302.4D Mini Hydraulic Excavators Machine Systems**

Media Number -UENR3254-01

Publication Date -01/05/2015

Date Updated -12/05/2015

i05228978

## **System Pressure - Release**

SMCS - 4350-553-PX; 5050-553-PX; 6700-553-PX

### **Release Procedure (Hydraulic System Pressure)**



**Personal injury can result from hydraulic oil pressure and hot oil.**

**Hydraulic oil pressure can remain in the hydraulic system after the engine has been stopped. Serious injury can be caused if this pressure is not released before any service is done on the hydraulic system.**

**Make sure all of the attachments have been lowered, oil is cool before removing any components or lines. Remove the oil filler cap only when the engine is stopped, and the filler cap is cool enough to touch with your bare hand.**

1. Lower the work tools to the ground.
2. Turn the engine start switch to the OFF position.
3. Turn the key to the ON position without starting the machine.
4. Move the joysticks through the full range of travel, releasing any pressure that may be present in the hydraulic system.
5. Push the auxiliary circuit control in both directions, releasing any pressure that may be present in the auxiliary system.
6. Turn the key to the OFF position.

7. The pressure in the hydraulic system has now been released. Hydraulic lines and components can now be removed.

---

[Copyright 1993 - 2020 Caterpillar Inc.](#)

Sat Mar 7 21:11:43 UTC+0800 2020

[All Rights Reserved.](#)

[Private Network For SIS Licensees.](#)

Product: MINI HYD EXCAVATOR  
Model: 302.2D MINI HYD EXCAVATOR LJG  
Configuration: 302.2D Mini Hydraulic Excavator LJG00001-UP (MACHINE)

## Disassembly and Assembly 301.7D, 302.2D and 302.4D Mini Hydraulic Excavators Machine Systems

Media Number -UENR3254-01

Publication Date -01/05/2015

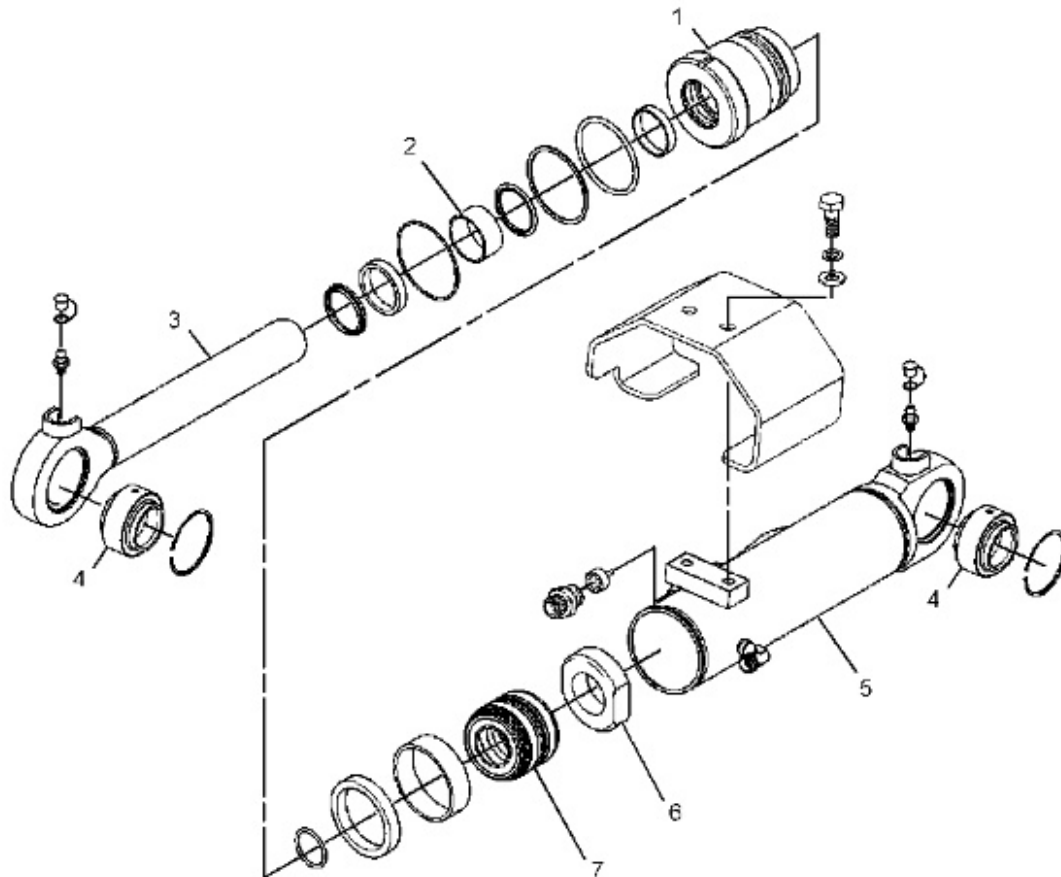
Date Updated -12/05/2015

i05221871

## Blade Cylinder - Remove and Install - Long

SMCS - 7562-010-BG

## Specifications



Thank you so much for reading.  
Please click the “Buy Now!”  
button below to download the  
complete manual.



After you pay.

You can download the most  
perfect and complete manual in  
the world immediately.

Our support email:

[ebooklibonline@outlook.com](mailto:ebooklibonline@outlook.com)