



Service Repair Manual

Models

305CR Mini Hydraulic Excavator

Product: MINI HYD EXCAVATOR

Model: 305 MINI HYD EXCAVATOR DGT

Configuration: 305CR Mini Hydraulic Excavator DGT00001-UP (MACHINE) POWERED BY K4N Engine

Disassembly and Assembly 305 Mini Hydraulic Excavator Machine Systems

Media Number -REN5546-04

Publication Date -01/08/2007

Date Updated -07/08/2007

i02404421

Travel Motor - Assemble

SMCS - 4351-016

Assembly Procedure

Table 1

Required Tools			
Tool	Part Number	Part Description	Qty
A	1P-1862	Snap Ring Pliers	1
B	1U-7588	Pry Bar	2
C	1U-6439	Duo-Cone Seal Installer	1
D	5P-3931	Anti-Seize Compound	1
E	9S-3263	Thread Lock Compound	1

Note: Replace all O-ring seals and gaskets. Apply a light film of "10W" oil to all components before assembly.

Note: Cleanliness is an important factor. Before assembly, all parts should be thoroughly cleaned in cleaning fluid. Allow the parts to air dry. Wiping cloths or rags should not be used to dry parts. Lint may be deposited on the parts which may cause later trouble. Inspect all parts. If any parts are worn or damaged, use new parts for replacement.

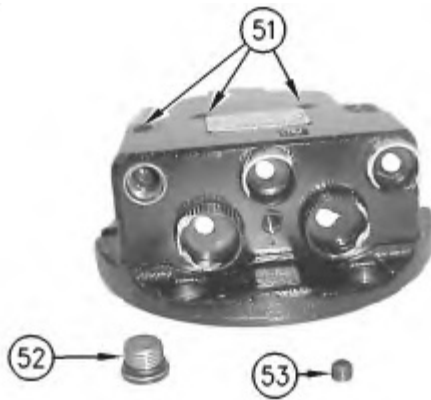


Illustration 1

g00764899

1. If necessary, install plugs (51) . Tighten the plugs to a torque of $12.3 \pm 2.45 \text{ N}\cdot\text{m}$ ($109 \pm 22 \text{ lb in}$). Install plug (52) , and the O-ring seal. Install plug (53) .

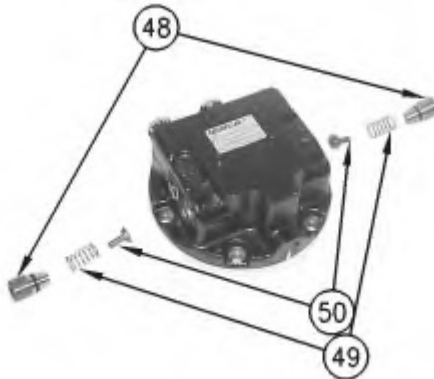


Illustration 2

g00764880

2. Install stoppers (50) , and springs (49) . Install plugs (48) , and the O-ring seals. Tighten plugs to a torque of $79 \pm 10 \text{ N}\cdot\text{m}$ ($58 \pm 7 \text{ lb ft}$).

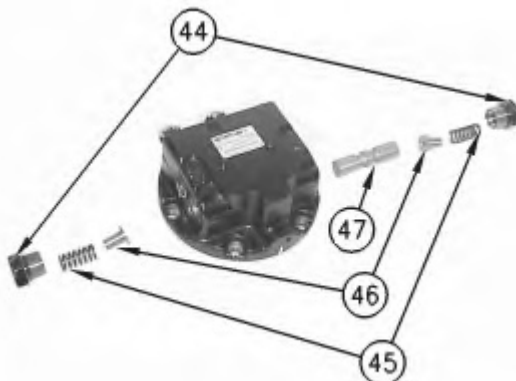


Illustration 3

g00764867

3. Install spool (47) . Install stoppers (46) , and springs (45) . Install plugs (44) , and the O-ring seals. Tighten the plugs to a torque of $195 \pm 15 \text{ N}\cdot\text{m}$ ($144 \pm 11 \text{ lb ft}$).

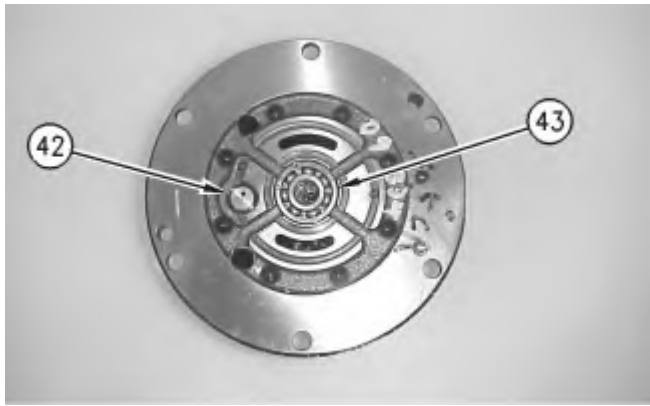


Illustration 4

g00764855

4. If necessary, install valve (42) . Install bearing (43) .

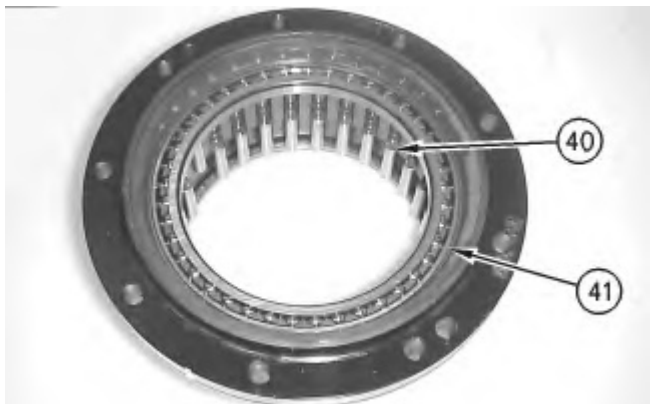


Illustration 5

g00764227

5. Install bearing (41) . Install pins (40) .
-

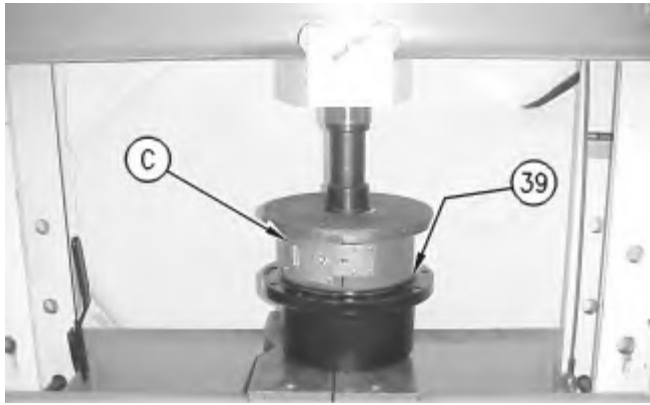


Illustration 6

g00862921

6. Use Tooling (C) in order to install Duo-Cone seal kit (39) .

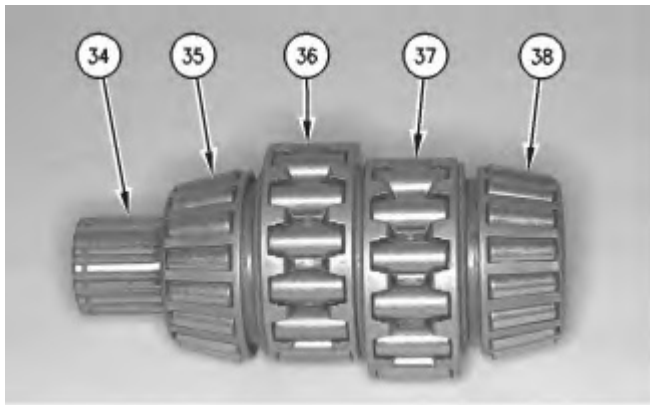


Illustration 7

g00764198

7. Install bearing (36) , and bearing (37) on shaft (34) . Install bearing cone (35) , and bearing cone (38) on shaft (34) .



Illustration 8

g00764194

Thank you so much for reading.
Please click the “Buy Now!”
button below to download the
complete manual.



After you pay.

You can download the most
perfect and complete manual in
the world immediately.

Our support email:

ebooklibonline@outlook.com