



Service Repair Manual

Models

307B Mini Hydraulic Excavator

Product: MINI HYD EXCAVATOR

Model: 307B MINI HYD EXCAVATOR 7DZ

Configuration: 307B TRACK-TYPE EXCAVATOR /SWING BOOM ARRANGEME/ 7DZ00001-UP (MACHINE) POWERED BY 4M40 ENGINE

Disassembly and Assembly 307B Excavator Machine Systems

Media Number -REN1091-03

Publication Date -01/09/2000

Date Updated -23/07/2018

i01706838

Support Bearings and Seals (Swing Boom) - Install

SMCS - 7051-S4

S/N - 6KZ1-UP

S/N - 7DZ1-UP

S/N - AFB1-UP

Installation Procedure

Table 1

Required Tools			
Tool	Part Number	Part Description	Qty
A	1P-0520	Driver group	1
B	9U-6204	Seal Installer	1

Installation of the bearing and the seal for the support

Note: Prior to the installation of the sleeve bearing and the lip seal, make sure that the pin bore in the support assembly is thoroughly clean.

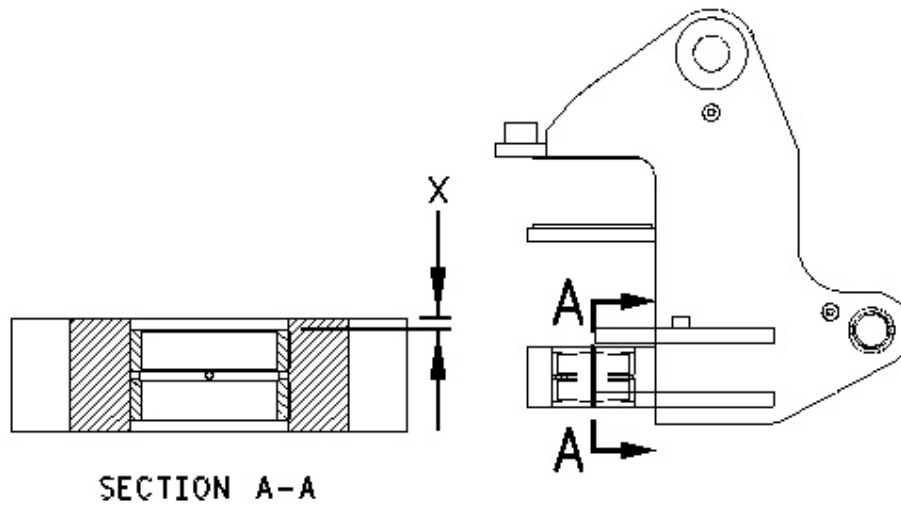


Illustration 1

g00535120

1. Lower the temperature of the sleeve bearings. Use Tooling (A) to install the sleeve bearing in the support. Install the sleeve bearing to Measurement (X). Measurement (X) is 9.5 ± 0.8 mm (0.37 ± 0.03 inch).



Illustration 2

g00534262

2. Use Tooling (B) to install lip seals (1). Install the seal with the sealing lip toward the top of the support. Install the lip seal until the lip seal makes contact with the bearing.

Installation of the bearing and the seal for the upper frame

Note: Prior to the installation of the sleeve bearing and the lip seal, make sure that the pin bore in the upper frame is thoroughly clean.

Note: The bearing will be installed to Measurement (X).

1. Lower the temperature of the sleeve bearings. Use Tooling (A) to install the sleeve bearing in the upper frame. Install the sleeve bearing to 9.5 ± 0.8 mm (0.37 ± 0.03 inch) below the top surface of the upper frame.



Illustration 3

g00534961

2. Use Tooling (B) to install lip seals (1). Install the seal with the sealing lip toward the top of the upper frame. Install the lip seal until the lip seal makes contact with the bearing.

Product: MINI HYD EXCAVATOR

Model: 307B MINI HYD EXCAVATOR 7DZ

Configuration: 307B TRACK-TYPE EXCAVATOR /SWING BOOM ARRANGEME/ 7DZ00001-UP (MACHINE) POWERED BY 4M40 ENGINE

Disassembly and Assembly 307B Excavator Machine Systems

Media Number -REN1091-03

Publication Date -01/09/2000

Date Updated -23/07/2018

i01706866

Support (Swing Boom) - Install

SMCS - 7051-S4

S/N - 6KZ1-UP

S/N - 7DZ1-UP

S/N - AFB1-UP

Installation Procedure

1. Make sure that the pin bores in the support are clean and free of dirt prior to the installation of the support.

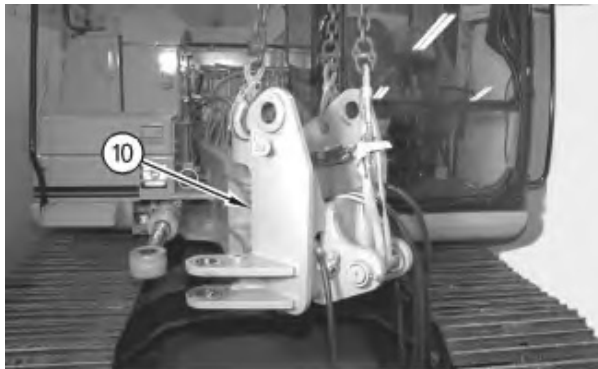


Illustration 1

g00533721

2. Attach a suitable lifting device to support assembly (10) and install the support assembly. The weight of the support is approximately 225 kg (500 lb).
-

Thank you so much for reading.
Please click the “Buy Now!”
button below to download the
complete manual.



After you pay.

You can download the most
perfect and complete manual in
the world immediately.

Our support email:

ebooklibonline@outlook.com