



Service Repair Manual

Models

308E2CR Mini
Hydraulic Excavator

Product: MINI HYD EXCAVATOR

Model: 308E2 CR MINI HYD EXCAVATOR FJX

Configuration: 308E2 CR Mini Hydraulic Excavator FJX00001-UP (MACHINE) POWERED BY C3.3B Engine

Disassembly and Assembly

C3.3B Tier 4 Final and EU Stage 3B Engines for Caterpillar Built Machines

Media Number -UENR3278-07

Publication Date -01/09/2014

Date Updated -11/07/2016

i05305970

Diesel Particulate Filter - Disassemble

SMCS - 108F-015

Disassembly Procedure



Wear goggles, gloves, protective clothing, and a National Institute for Occupational Safety and Health (NIOSH) approved P95 or N95 half-face respirator when handling a used Diesel Particulate Filter or Catalytic Converter Muffler. Failure to do so could result in personal injury.

NOTICE

Do not strike any part of the assembly of the Diesel Particulate Filter (DPF). Do not allow any object to contact the internal element of the DPF. If the internal element of the DPF becomes damaged, the assembly must be replaced.

1. Mark the position of components for installation purposes.
-

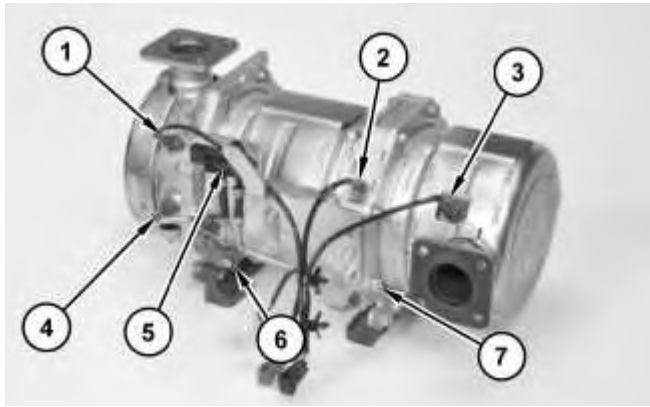


Illustration 1

g03337342

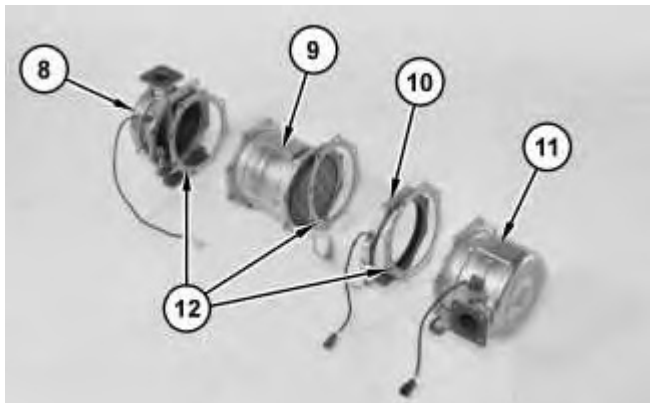


Illustration 2

g03337375

2. Remove temperature sensor (1) from body assembly (8). Remove tube assemblies (4) and pressure sensor (5).
3. Remove bolts (6). Remove body assembly (8) and gasket (12).
4. Remove bolts (7) to separate DPF filter assembly (9) from collar (10). Remove DPF filter assembly (9).
5. Remove temperature sensor (2) from collar (10). Remove collar (10) and gasket (12).
6. Remove temperature sensor (3) from catalyst assembly (11). Remove catalyst assembly (11) and gasket (12).
7. Clean the Diesel Particulate Filter (DPF). Refer to Special Instruction, REHS7788, "Cleaning the Diesel Particulate Filter (DPF) on C3.3B and C3.8 Engines".

Product: MINI HYD EXCAVATOR

Model: 308E2 CR MINI HYD EXCAVATOR FJX

Configuration: 308E2 CR Mini Hydraulic Excavator FJX00001-UP (MACHINE) POWERED BY C3.3B Engine

Disassembly and Assembly

C3.3B Tier 4 Final and EU Stage 3B Engines for Caterpillar Built Machines

Media Number -UENR3278-07

Publication Date -01/09/2014

Date Updated -11/07/2016

i05305971

Diesel Particulate Filter - Assemble

SMCS - 108F-016

Assembly Procedure

Table 1

Required Tools			
Tool	Part Number	Part Description	Qty
A	-	Loctite Nickel Anti Seize	1



WARNING

Wear goggles, gloves, protective clothing, and a National Institute for Occupational Safety and Health (NIOSH) approved P95 or N95 half-face respirator when handling a used Diesel Particulate Filter or Catalytic Converter Muffler. Failure to do so could result in personal injury.

NOTICE

Do not strike any part of the assembly of the Diesel Particulate Filter (DPF). Do not allow any object to contact the internal element of the DPF. If the internal element of the DPF becomes damaged, the assembly must be replaced.

Note: After cleaning filter assembly or installing a new filter assembly, the Ash Service must be performed. Refer to Troubleshooting, UENR3423, "Cat ET Service Features - DPF Soot Load Reset".

Note: When installing a new DOC or DPF, Caterpillar recommends documenting the new component serial numbers on-line. Go to SIS Web and select "View More" under Additional Service Information. Select the "C3.3B and C3.8 Downloads" link. The new DOC or DPF serial numbers can be entered through the "C3.3B and C3.8 DPF / DOC Service Info Registration".

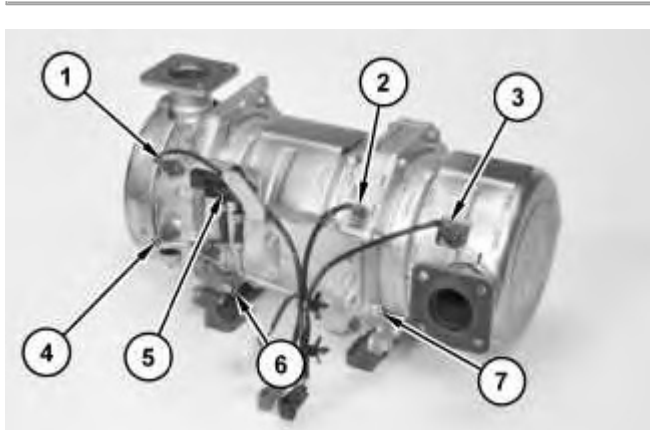


Illustration 1

g03337342

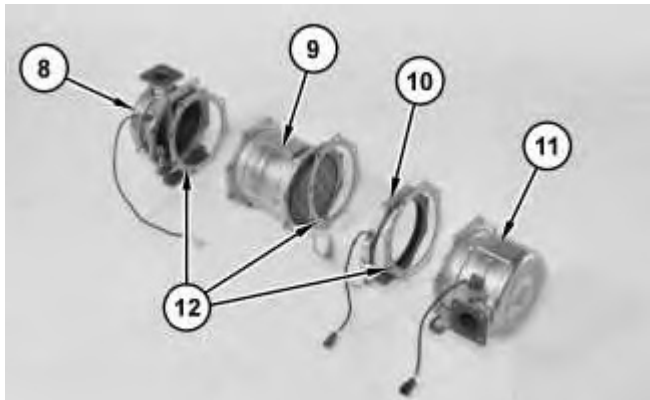


Illustration 2

g03337375



Thank you so much for reading.
Please click the “Buy Now!”
button below to download the
complete manual.



After you pay.

You can download the most
perfect and complete manual in
the world immediately.

Our support email:

ebooklibonline@outlook.com