



Service Repair Manual

Models

320F L Excavator

Product: EXCAVATOR

Model: 320F L EXCAVATOR YBM

Configuration: 320F L Excavator YBM00001-UP (MACHINE) POWERED BY C4.4 Engine

Disassembly and Assembly 320F, 323F Excavators Machine Systems

Media Number -M0066628-06

Publication Date -01/09/2018

Date Updated -18/09/2018

i06221522

Load Control Valve (Boom Cylinder) - Remove and Install

SMCS - 5811-010-BCD

Removal Procedure

Table 1

Required Tools			
Tool	Part Number	Part Description	Qty
A	311-1362	Vacuum Gauge Gp	1

Start By:

- Release the hydraulic system pressure.



WARNING

Personal injury can result from hydraulic oil pressure and hot oil.

Hydraulic oil pressure can remain in the hydraulic system after the engine has been stopped. Serious injury can be caused if this pressure is not released before any service is done on the hydraulic system.

Make sure all of the work tools have been lowered to the ground, and the oil is cool before removing any components or lines. Remove the oil filler cap only when the engine is stopped, and the filler cap is cool enough to touch with your bare hand.



Illustration 1

g02729614

1. Remove the cap from the hydraulic tank. Install Tooling (A) onto the hydraulic tank. Attach an air supply hose to Tooling (A). Apply 276 to 414 kPa (40 to 60 psi) of air. This procedure will pull vacuum on the hydraulic system.

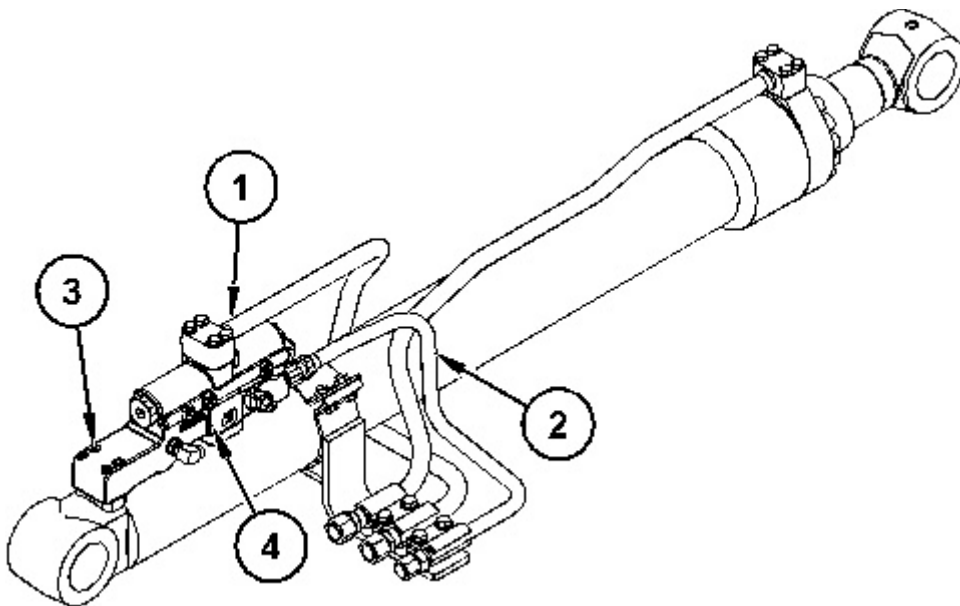


Illustration 2

g02731832

2. Disconnect tube assemblies (1) and (2). Remove bolts (3) and remove load control valve (4).

Installation Procedure

1. Install load control valve (boom cylinder) (3) in the reverse order of removal.

Product: EXCAVATOR

Model: 320F L EXCAVATOR YBM

Configuration: 320F L Excavator YBM00001-UP (MACHINE) POWERED BY C4.4 Engine

Disassembly and Assembly 320F, 323F Excavators Machine Systems

Media Number -M0066628-06

Publication Date -01/09/2018

Date Updated -18/09/2018

i06221523

Load Control Valve (Boom Cylinder) - Disassemble

SMCS - 5811-015-BCD

Disassembly Procedure

Start By:

- a. Remove the load control valve (boom cylinder)

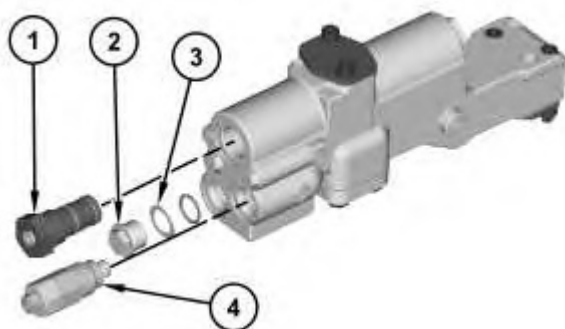


Illustration 1

g02731169

1. Remove relief valve (4). Remove plug (2) and washer (3).
2. Remove valve (1).

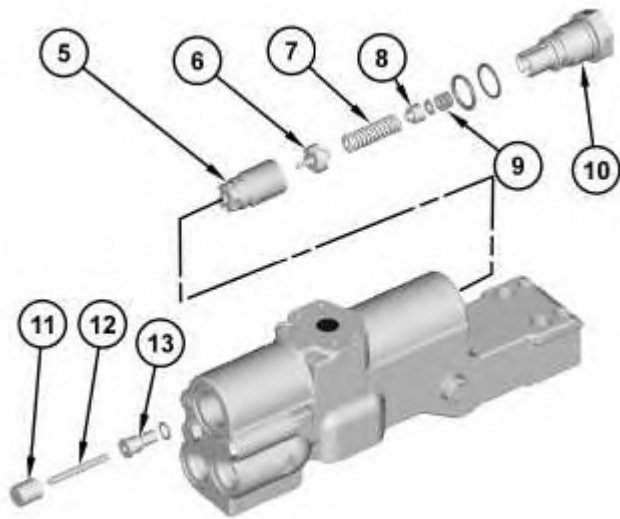


Illustration 2

g02779958



WARNING

Personal injury can result from being struck by parts propelled by a released spring force.

Make sure to wear all necessary protective equipment.

Follow the recommended procedure and use all recommended tooling to release the spring force.

3. Remove plug (10), shims (9), guide (8), spring (7), valve (6), and valve (5).
 4. Remove piston (11), pin (12), and guide (13).
-

Thank you so much for reading.
Please click the “Buy Now!”
button below to download the
complete manual.



After you pay.

You can download the most
perfect and complete manual in
the world immediately.

Our support email:

ebooklibonline@outlook.com