



# Service Repair Manual

## **Models**

# 420F Backhoe Loader

---

Product: BACKHOE LOADER

Model: 420F BACKHOE LOADER JWJ

Configuration: 420F Backhoe Loader JWJ00001-UP (MACHINE) POWERED BY C4.4 Engine

## Disassembly and Assembly 416F, 420F and 430F Backhoe Loaders Machine Systems

Media Number -UENR2321-04

Publication Date -01/01/2014

Date Updated -03/11/2016

i06851396

# Piston Pump - Disassemble - Main Hydraulic

SMCS - 5070-015; 5455

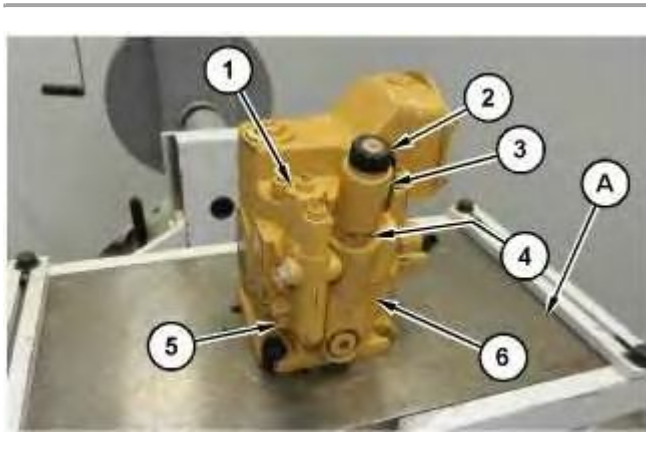
## Disassembly Procedure

Table 1

Required Tools			
Tool	Part Number	Part Description	Qty
A	437-3776	Fixture As.	1
	1U-9128	Adapter Plate	1
	1U-5750	Engine Stand	1
B	9S-9152	Bearing Puller	1

### Start By:

- a. Remove the piston pump (main hydraulic).





**Sudden release of spring force can cause injury.**

**To prevent the possibility of injury, follow the procedure to relieve the spring pressure.**

1. Secure the piston pump to Tooling (A) or a suitable fixture.
2. Remove nut (2) and the O-ring seal, solenoid (3), and valve (4) from main pump housing (6).
3. Remove bolts (5) and compensator valve (1) from main pump housing (6).

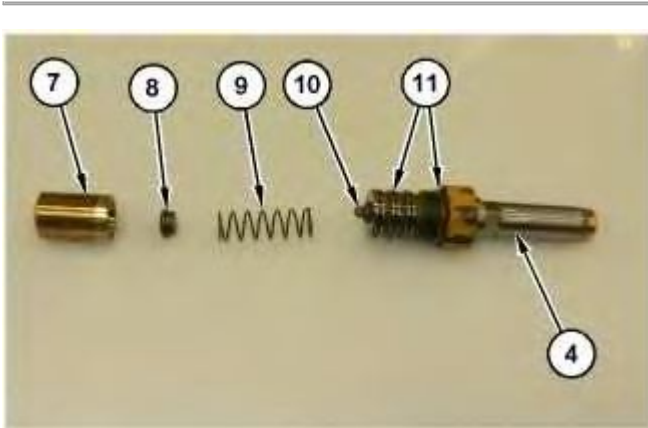


Illustration 2

4. Remove actuator piston (7), spring guide (8), spring (9), spool (10), and O-ring seals (11) from valve (4).

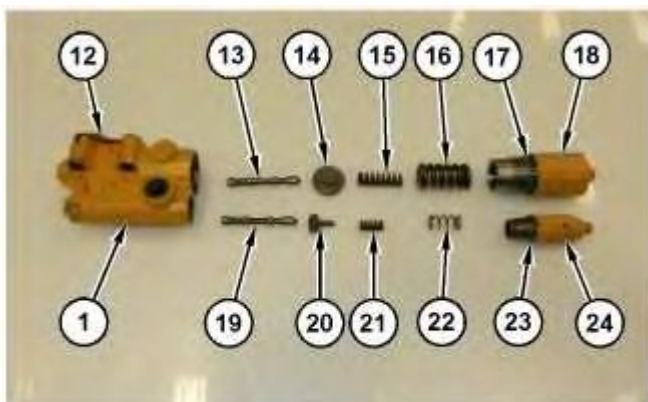


Illustration 3

## **WARNING**

**Sudden release of spring force can cause injury.**

**To prevent the possibility of injury, follow the procedure to relieve the spring pressure.**

---

5. Remove gasket (12) from compensator valve (1).
6. Remove plug (18), O-ring seal (17), spring (16), spring (15), guide (14), and spool (13) from compensator valve (1).
7. Remove plug (24), O-ring seal (23), spring (22), spring (21), guide (20), and spool (19) from compensator valve (1).

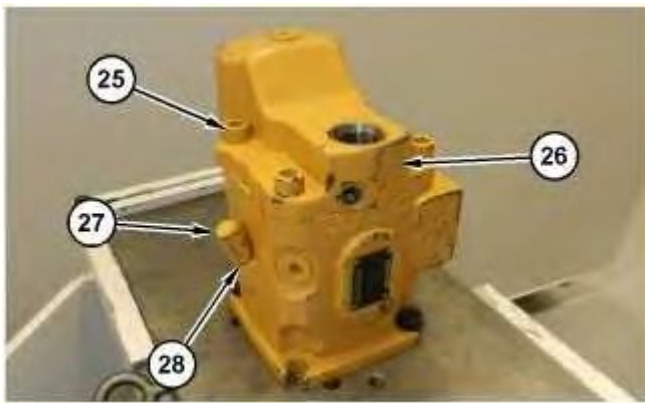


Illustration 4

g06141800

## **WARNING**

**Sudden release of spring force can cause injury.**

**To prevent the possibility of injury, follow the procedure to relieve the spring pressure.**

---

8. Remove cover (27) and the O-ring seal. Remove adjustment screw (28) and the O-ring seal. Remove bolts (25) and head assembly (26).
-

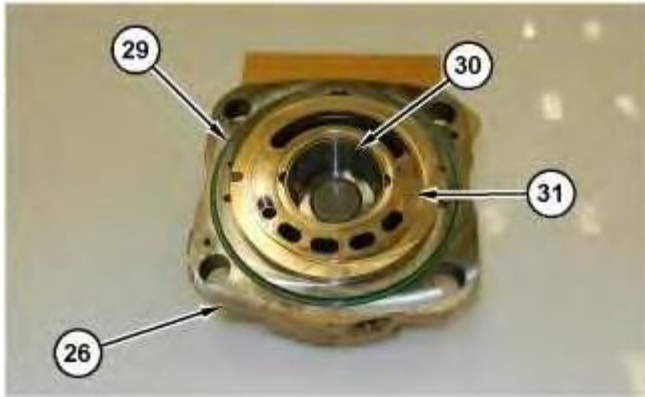


Illustration 5

g06141813

9. Remove O-ring seal (29) and port plate (31) from head assembly (26).
10. Remove bearing cup (30) from head assembly (26).

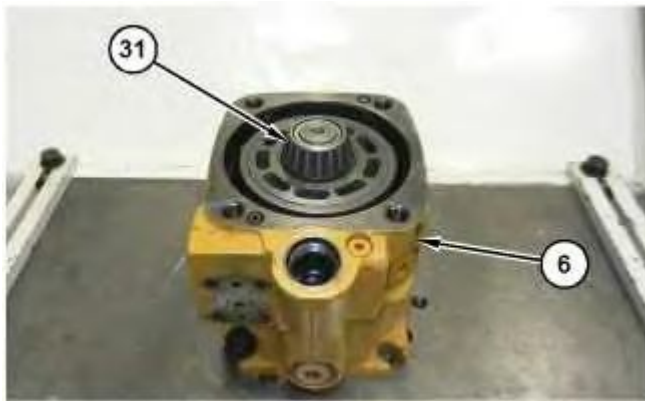


Illustration 6

g06141820

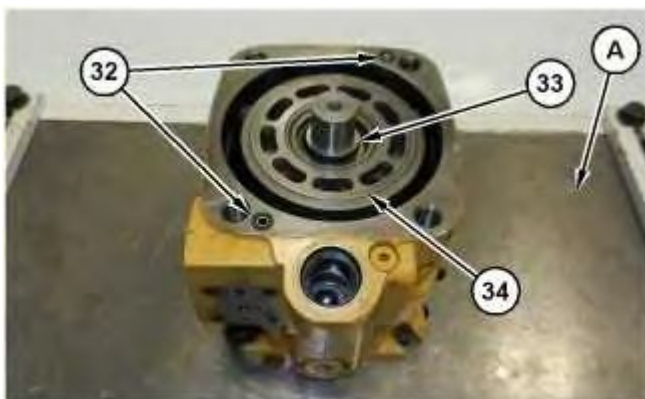


Illustration 7

g06142001

11. Remove bearing cone (31), O-ring seals (32), and shim (33) .
12. Use Tooling (A) to rotate main pump housing (6) to a horizontal position. Remove rotary group (34).

Thank you so much for reading.  
Please click the “Buy Now!”  
button below to download the  
complete manual.



After you pay.

You can download the most  
perfect and complete manual in  
the world immediately.

Our support email:

[ebooklibonline@outlook.com](mailto:ebooklibonline@outlook.com)