



Service Repair Manual

Models

424B Backhoe Loader

Product: BACKHOE LOADER
Model: 424B BACKHOE LOADER JRC
Configuration: 424B Backhoe Loader JRC05546-UP (MACHINE)

Disassembly and Assembly 424B and 424B HD Backhoe Loaders Engine Supplement

Media Number -UENR2398-02

Publication Date -01/07/2014

Date Updated -02/07/2014

i05120829

System Pressure - Release

SMCS - 3000-553-PX; 4250-553-PX; 4300-553-PX; 5050-553-PX; 6700-553-PX

Release Procedure

1. Park on a level surface. If you must park on a grade, chock the machine.
2. Apply the service brake in order to stop the machine. Move the transmission control lever to the NEUTRAL position.
3. Move the speed control lever to the LOW IDLE position.
4. Engage the parking brake.
5. Engage the transmission neutral lock.
6. Lower all attachments to the ground.
7. Stop the engine.
8. Turn the engine start switch key to OFF position for 4 seconds.
9. Turn the engine start switch key back to ON position.
10. Press the clamp cylinder switch to the ON position.
11. Operate all hydraulic controls through all positions in order to relieve hydraulic pressure. Repeat this step until all hydraulic pressure is released.
12. Move the hydraulic control levers to the HOLD position.
13. Turn the engine start switch to OFF position and remove the key.

Product: BACKHOE LOADER
Model: 424B BACKHOE LOADER JRC
Configuration: 424B Backhoe Loader JRC05546-UP (MACHINE)

Disassembly and Assembly 424B and 424B HD Backhoe Loaders Engine Supplement

Media Number -UENR2398-02

Publication Date -01/07/2014

Date Updated -02/07/2014

i05818303

Hood - Remove and Install

SMCS - 7251-010

S/N - JRC5546-7809

Removal Procedure

Start By:

- A. Remove the side panel.

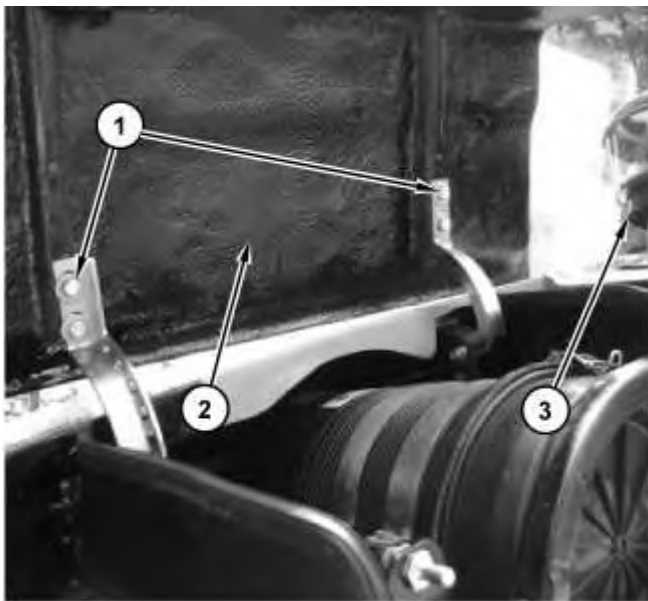


Illustration 1

g03109256

1. Open hood (2) and remove four bolts (1) . Remove left side of hood (2) and air precleaner (3) .

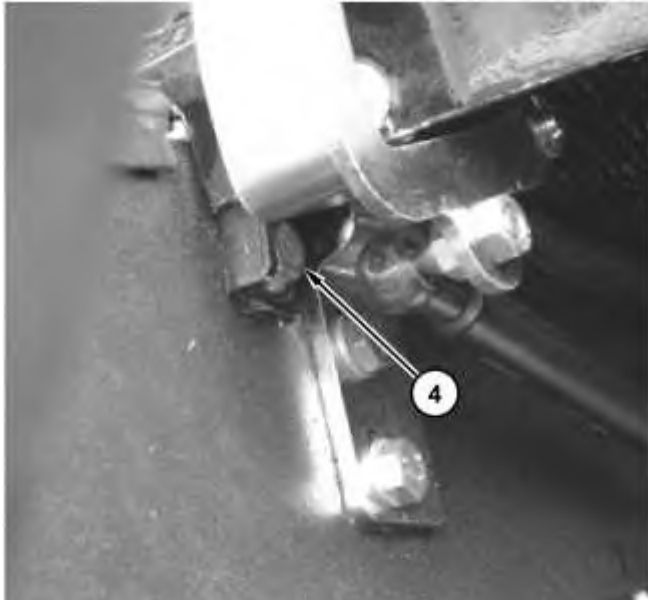


Illustration 2

g03109276

2. Remove bolts (4) from the front right side of the hood.

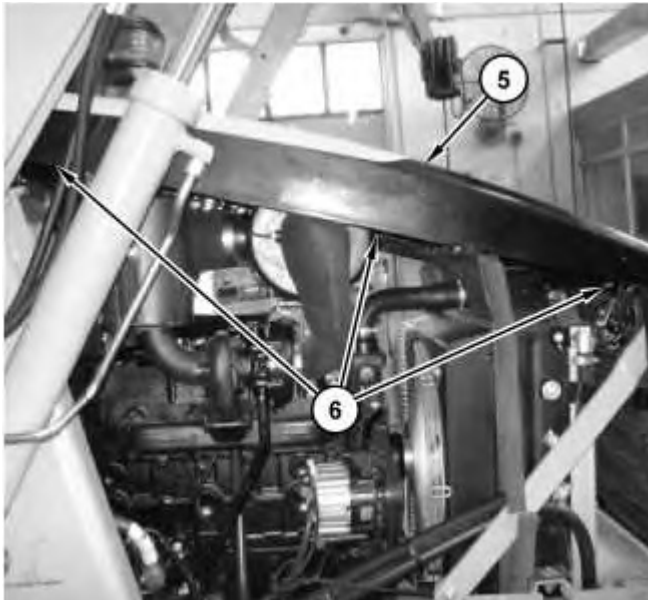


Illustration 3

g03685147

3. Remove bolts (6) from hood (5) .
-

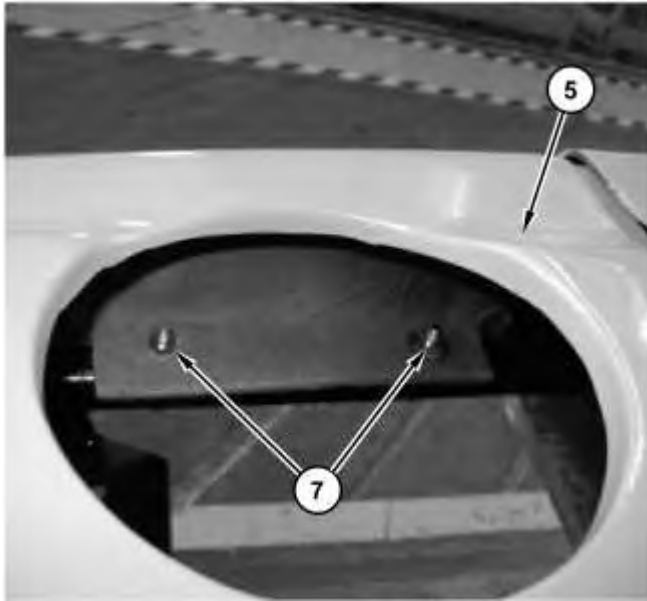


Illustration 4

g03685148

4. Remove bolts and nuts (7) and hood (5) .

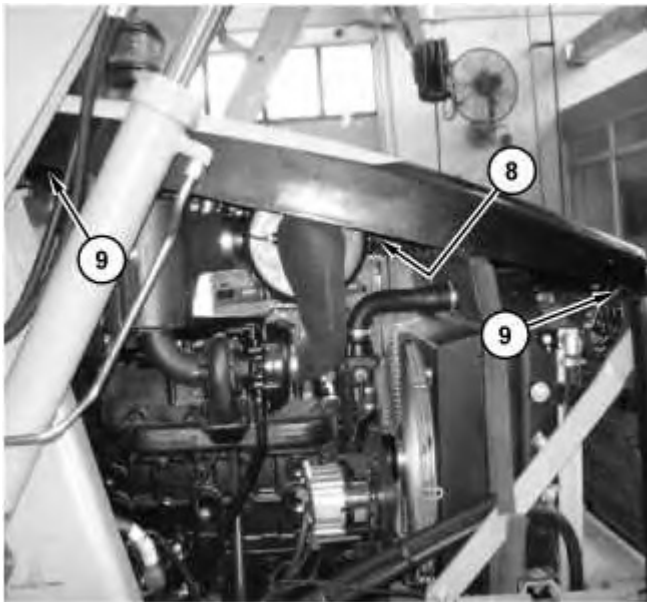


Illustration 5

g03685150

5. Remove four bolts (9) on both sides. Remove the hood support assembly (8) .

Installation Procedure

1. Install hood (5) in the reverse order of removal procedure.

Thank you so much for reading.
Please click the “Buy Now!”
button below to download the
complete manual.



After you pay.

You can download the most
perfect and complete manual in
the world immediately.

Our support email:

ebooklibonline@outlook.com