



Service Repair Manual

Models

450E Backhoe Loader

Product: BACKHOE LOADER

Model: 450E BACKHOE LOADER LYR

Configuration: 450E Backhoe Loader LYR00001-UP (MACHINE) POWERED BY C4.4 Engine

Disassembly and Assembly 450E Backhoe Loader Machine Systems

Media Number -UENR0271-02

Publication Date -01/04/2017

Date Updated -25/04/2017

i02485140

Piston Pump - Disassemble

SMCS - 5070-015; 5455

Disassembly Procedure

Table 1

Required Tools			
Tool	Part Number	Part Description	Qty
A	1P-0074	Slide Hammer Puller	1
B	1P-0510	Driver Group	1
C	1P-1858	Retaining Ring Pliers	1
D	8H-0663	Bearing Puller Assembly	1
E	166-7441	Valve Seat Extractor Tool	1
F	1P-1861	Retaining Ring Pliers	1

Start By:

- a. Remove the piston pump. Refer to Disassembly and Assembly, "Piston Pump - Remove".

NOTICE

Care must be taken to ensure that fluids are contained during performance of inspection, maintenance, testing, adjusting, and repair of the product. Be prepared to collect the fluid with suitable containers before opening any compartment or disassembling any component containing fluids.

Refer to Special Publication, NENG2500, "Dealer Service Tool Catalog" for tools and supplies suitable to collect and contain fluids on Cat products.

Dispose of all fluids according to local regulations and mandates.

Note: Cleanliness is an important factor. Before the disassembly procedure, the exterior of the component should be thoroughly cleaned. This will help to prevent dirt from entering the internal mechanism.

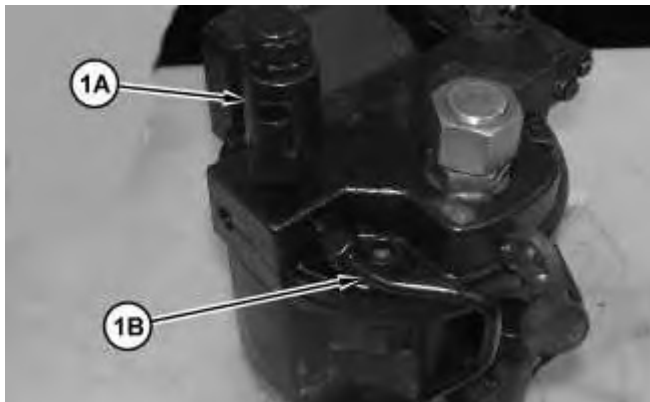


Illustration 1

g01240851

1. Remove solenoid assembly (1A) and tube assembly (1B).

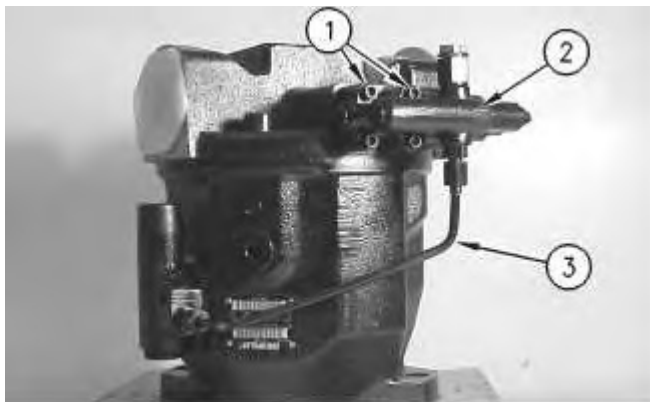


Illustration 2

g00723093

2. Remove tube assembly (3). Remove bolts (1) and pressure and flow compensator valve (2).
-

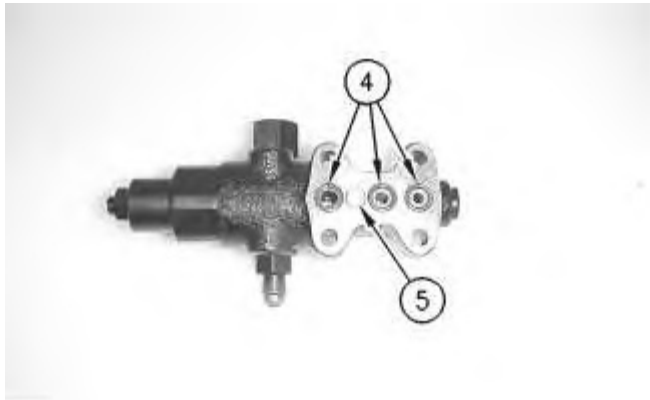


Illustration 3

g00723096

Note: Mark the position of valve (5) for assembly purposes.

3. Remove O-ring seals (4) and valve (5).

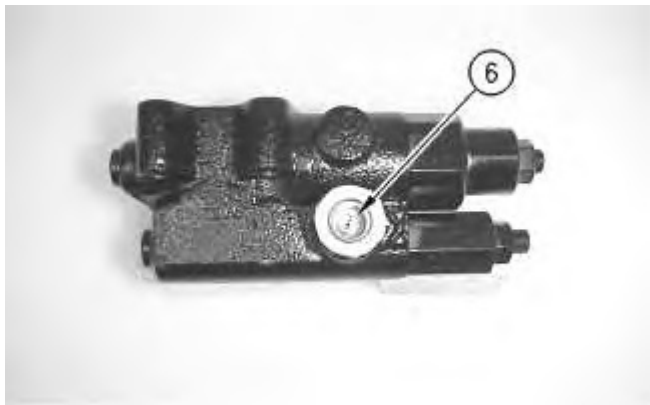


Illustration 4

g00723097

4. Remove orifice (6).

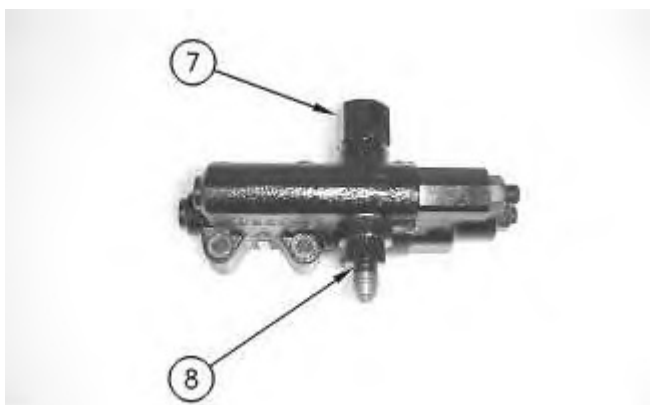


Illustration 5

g00723098

5. Remove adapter assembly (7) and connector (8). Remove the seals from adapter assembly (7) and connector (8).

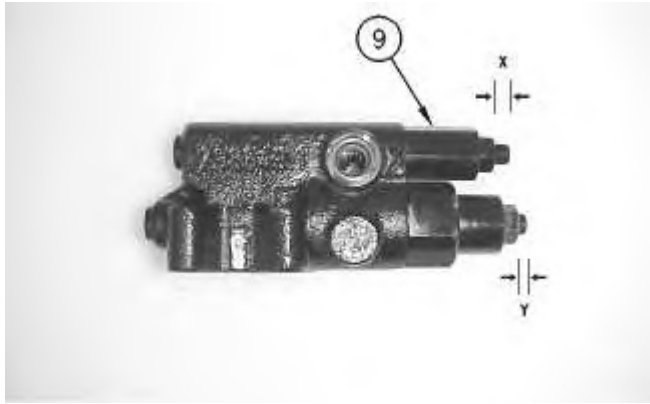


Illustration 6

g00723099

WARNING

Personal injury can result from being struck by parts propelled by a released spring force.

Make sure to wear all necessary protective equipment.

Follow the recommended procedure and use all recommended tooling to release the spring force.

Note: Record Dimension (X) and Dimension (Y) for assembly purposes. The dimension is from the top of the nuts to the top of the screws.

6. Remove valve assembly (9).

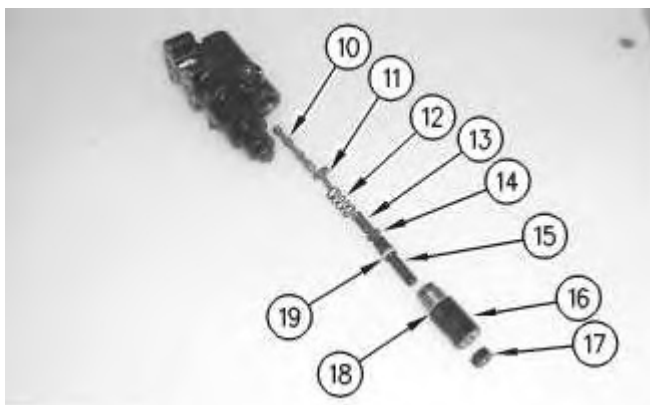


Illustration 7

g00723100

7. Remove nut (17), plug (16), screw (15), and seat (14). Remove springs (13) and (12). Remove retainer (11) and stem (10). Remove seal (18) and seal (19).

Thank you so much for reading.
Please click the “Buy Now!”
button below to download the
complete manual.



After you pay.

You can download the most
perfect and complete manual in
the world immediately.

Our support email:

ebooklibonline@outlook.com