



# Service Repair Manual

## **Models**

D25D and D30D

ARTICULATED TRUCK

---

Product: ARTICULATED TRUCK

Model: D30D ARTICULATED TRUCK 3AJ

Configuration: D25D, D30D ARTICULATED TRUCK 3AJ00415-UP (MACHINE) POWERED BY 3306 ENGINE

## **Disassembly and Assembly 3304B and 3306B Engines for Caterpillar Built Machines**

Media Number -SEN5598-09

Publication Date -01/01/2013

Date Updated -25/01/2013

i01003269

# **Fuel Transfer Pump - Assemble**

SMCS - 1256-016

## **Assembly Procedure**

---

### **NOTICE**

**Care must be taken to ensure that fluids are contained during performance of inspection, maintenance, testing, adjusting and repair of the machine. Be prepared to collect the fluid with suitable containers before opening any compartment or disassembling any component containing fluids.**

**Refer to Special Publication, NENG2500, "Caterpillar Tools and Shop Products Guide", for tools and supplies suitable to collect and contain fluids in Caterpillar machines.**

**Dispose of all fluids according to local regulations and mandates.**

---

---

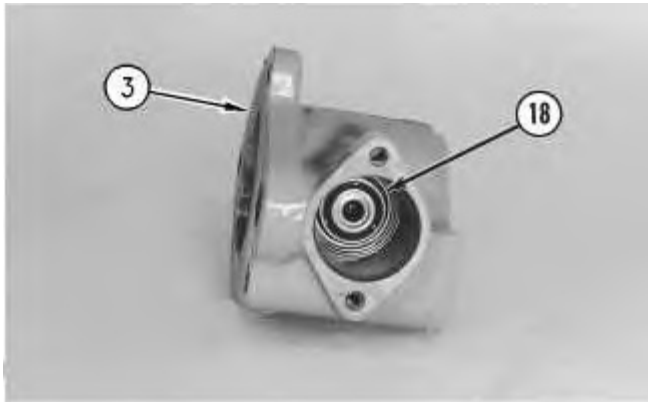


Illustration 1

g00498470

1. Install valve assembly (18) in housing (3) .

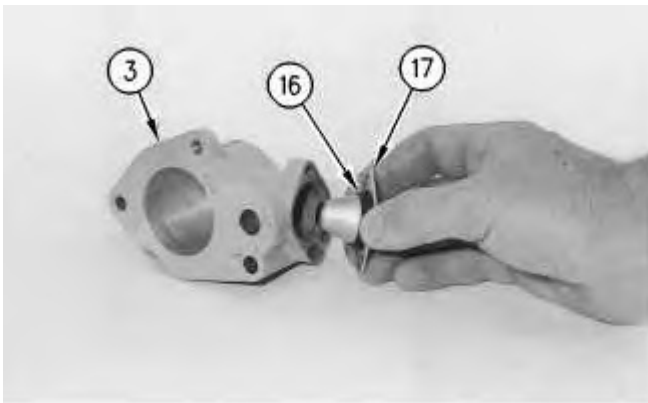


Illustration 2

g00498687

2. Put clean diesel fuel on seal (16). Install seal (16) on cover (17), as shown. Install the two bolts that hold cover (17) to housing (3) .

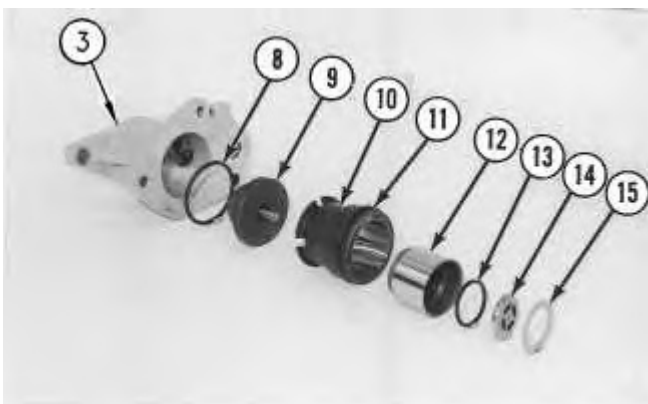


Illustration 3

g00498334

---

## NOTICE

**The tappet and guide assembly must be serviced as a unit.**

---

3. Put clean diesel fuel on seal (8). Install seal (8) on guide and tappet assembly (9). Install guide and tappet assembly (9) in housing (3) .
4. Put clean diesel fuel on O-ring seal (11). Put O-ring seal (11) in position on sleeve (10). Install sleeve (10) in housing (3) .
5. Install piston (12) in sleeve (10) .
6. Put clean diesel fuel on seal (13). Put seal (13), valve assembly (14) and washer (15) in position in piston (12) .

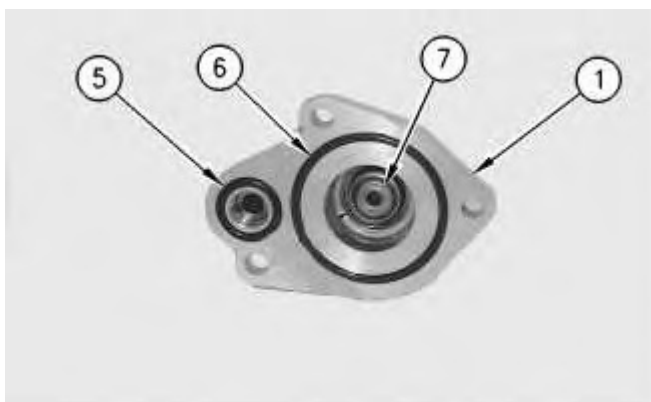
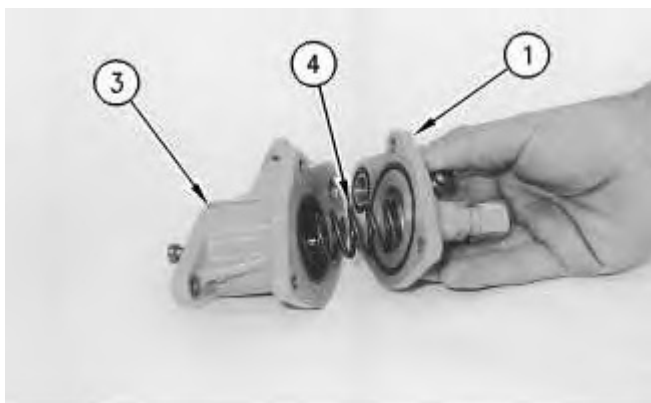


Illustration 4

g00498980

7. Put clean diesel fuel on O-ring seals (5) and (6). Install O-ring seals (5) and (6) in cover (1). Install valve assembly (7) in cover (1) .



8. Install spring (4) in housing (3) .

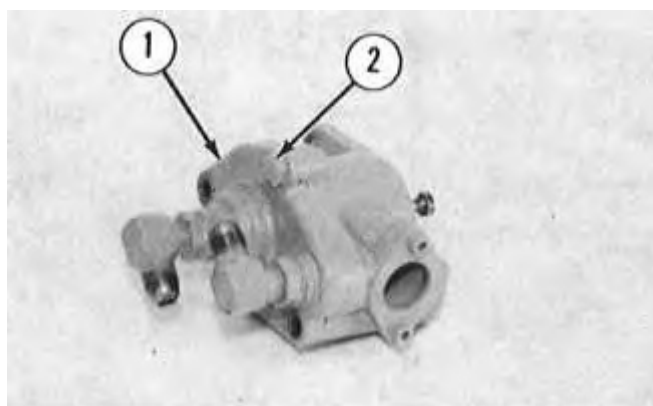


Illustration 6

g00498289

9. Put cover (1) in position on the housing and install bolts (2) that hold the cover in position.

**End By:** Install the fuel transfer pump. Refer to Disassembly and Assembly, "Fuel Transfer Pump - Install".

Thank you so much for reading.  
Please click the “Buy Now!”  
button below to download the  
complete manual.



After you pay.

You can download the most  
perfect and complete manual in  
the world immediately.

Our support email:

[ebooklibonline@outlook.com](mailto:ebooklibonline@outlook.com)