

Product: TRACK-TYPE TRACTOR

Model: D6N TRACK-TYPE TRACTOR CBL

Configuration: D6N TRACK-TYPE TRACTOR PS DS XL/PS DS LGP CBL00001-UP (MACHINE) POWERED BY 3126B ENGINE

Disassembly and Assembly D6N Track-Type Tractor Power Train

Media Number -REN5257-04

Publication Date -01/12/2015

Date Updated -15/12/2015

i02462383

Bevel and Transfer Gears - Assemble

SMCS - 3011-016

Assembly Procedure

Table 1

Required Tools			
Tool	Part Number	Part Description	Qty
A	1P-2420	Transmission Repair Stand	1
C	8T-2839	Spanner Wrench	1
E	8T-5096	Dial Indicator Gp	1
	6V-6042	Indicator Point Gp	1
	8T-4122	Hard Washer	1
F	8B-7558	Adapter	1
	1B-3623	Bolt	1
	2P-8260	Cylinder Liner Installer	1
	2P-8260	Cylinder Liner Installer	1
	9U-6207	Plate	1
G	031-9099	Bolt	1
	2J-3506	Full Nut	1
	8T-4994	Hard Washer	1
H	4C-5597	Anti-Seize Compound	
J	1U-7234	Feeler Gauge	1

K	1P-0510	Driver Gp	1
L	FT-2973	Holding Plate	1
M	5P-3413	Pipe Sealant	

NOTICE

Keep all parts clean from contaminants.

Contamination of the hydraulic system with foreign material will reduce the service life of the hydraulic system components.

To prevent contaminants from entering the hydraulic system, always plug or cap the lines, fittings, or hoses as they are disconnected. Cover any disassembled components and clean them properly before assembly.

Clean the hydraulic system properly after any major component exchange or especially after a component failure, to remove any contamination.

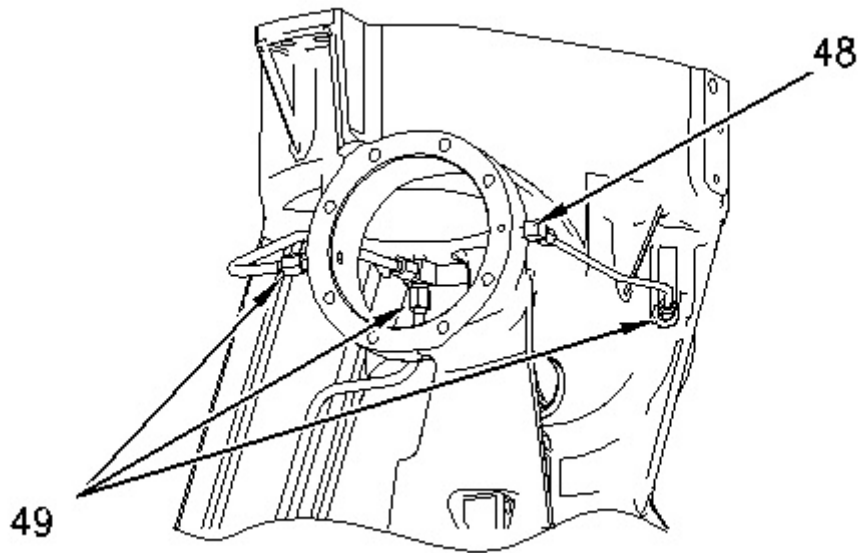


Illustration 1

g00994564

1. Install fittings (48), if fittings (48) were removed.
 2. Install tube assemblies (49).
-

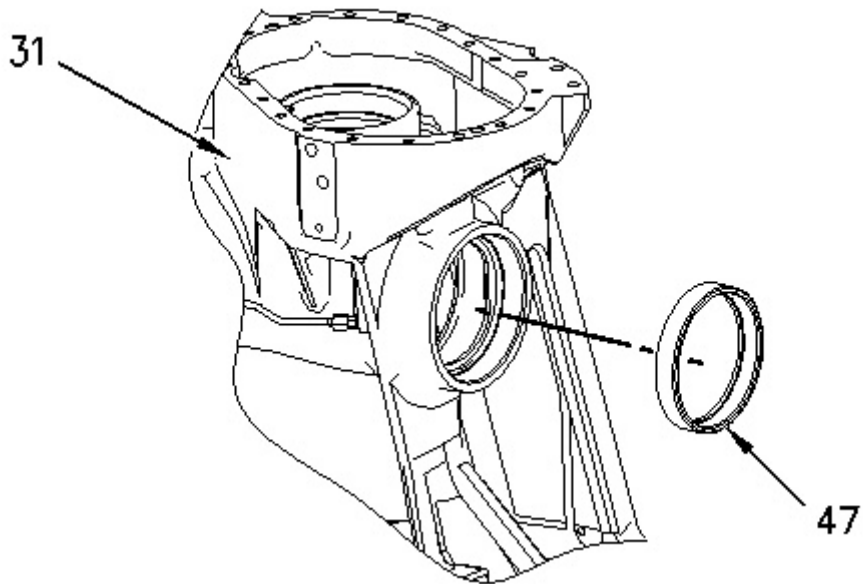


Illustration 2

g00994563

3. Lower the temperature of bearing cup (47).
4. Install bearing cup (47) into case (31).

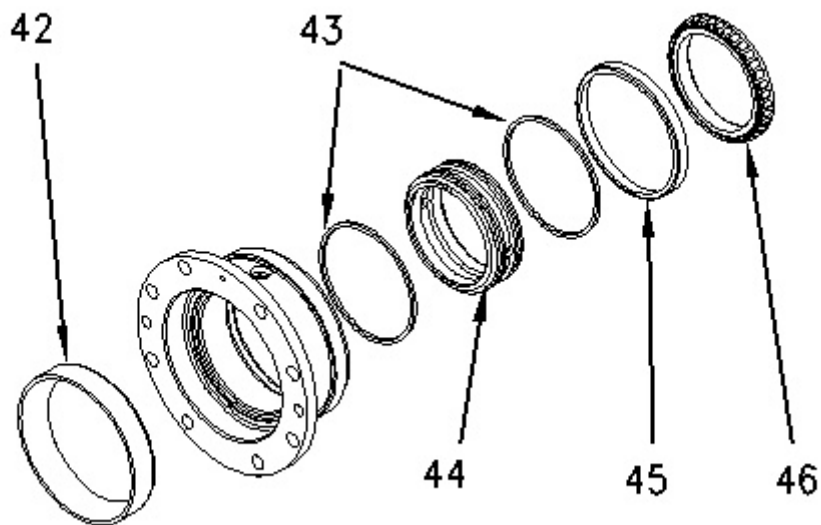


Illustration 3

g00994149

5. Install rings (43) into carrier (44).
6. Install carrier (44).
7. Lower the temperature of bearing cups (42) and (45). Install bearing cups (42) and (45).
8. Install bearing cone (46).

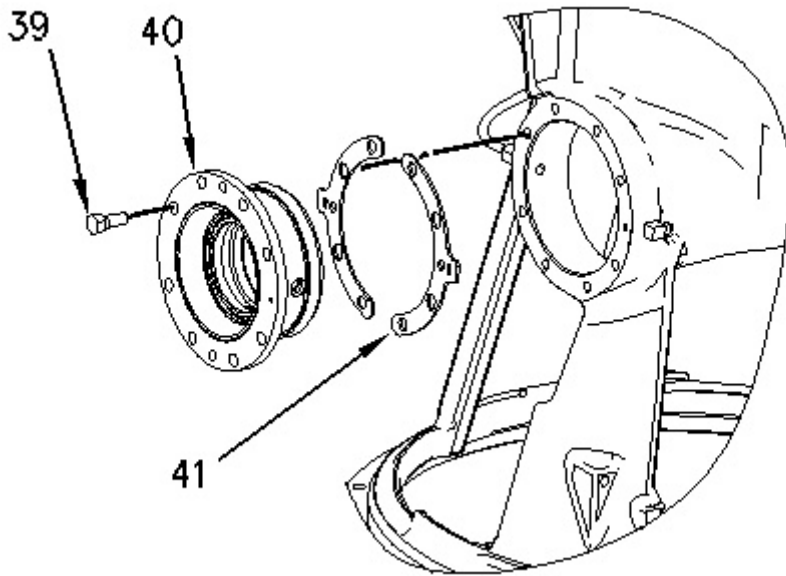


Illustration 4

g00994148

9. Install original shims (41), cage (40), and bolts (39).
-

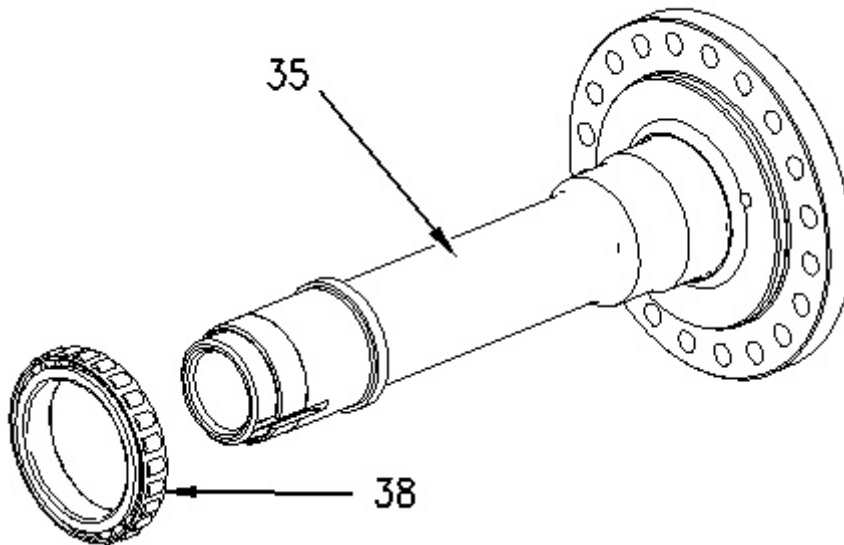


Illustration 5

g00954863

10. Raise the temperature of race and roller bearing (38).
 11. Install the race and roller bearing (38) onto shaft assembly (35).
-

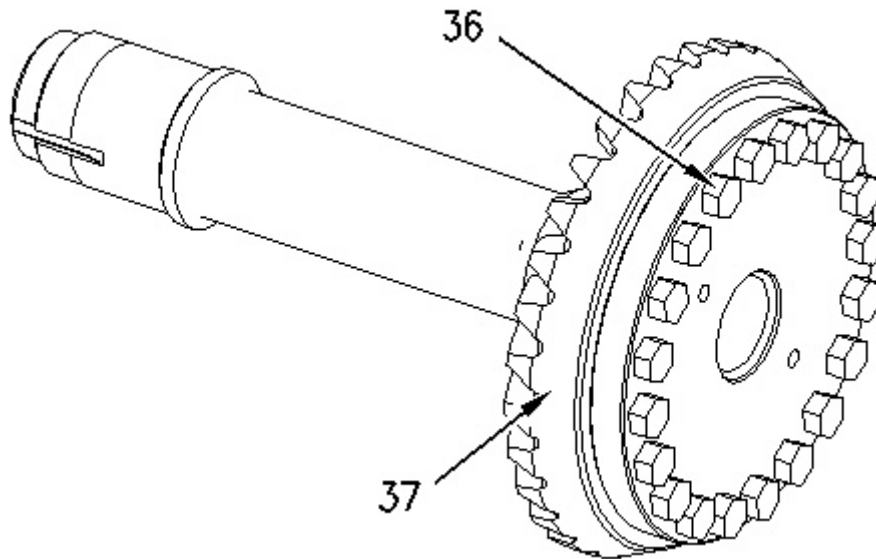


Illustration 6

g00954861

12. Position gear (37). Install bolts (36).

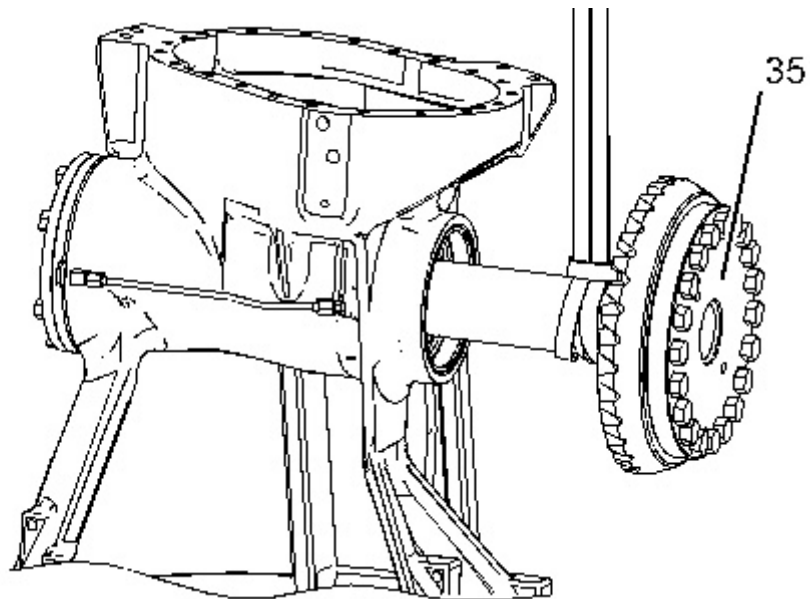


Illustration 7

g01233575

13. Attach a suitable lifting device to shaft assembly (35). The weight of shaft assembly (35) is approximately 39 kg (86 lb).
 14. Install shaft assembly (35).
-

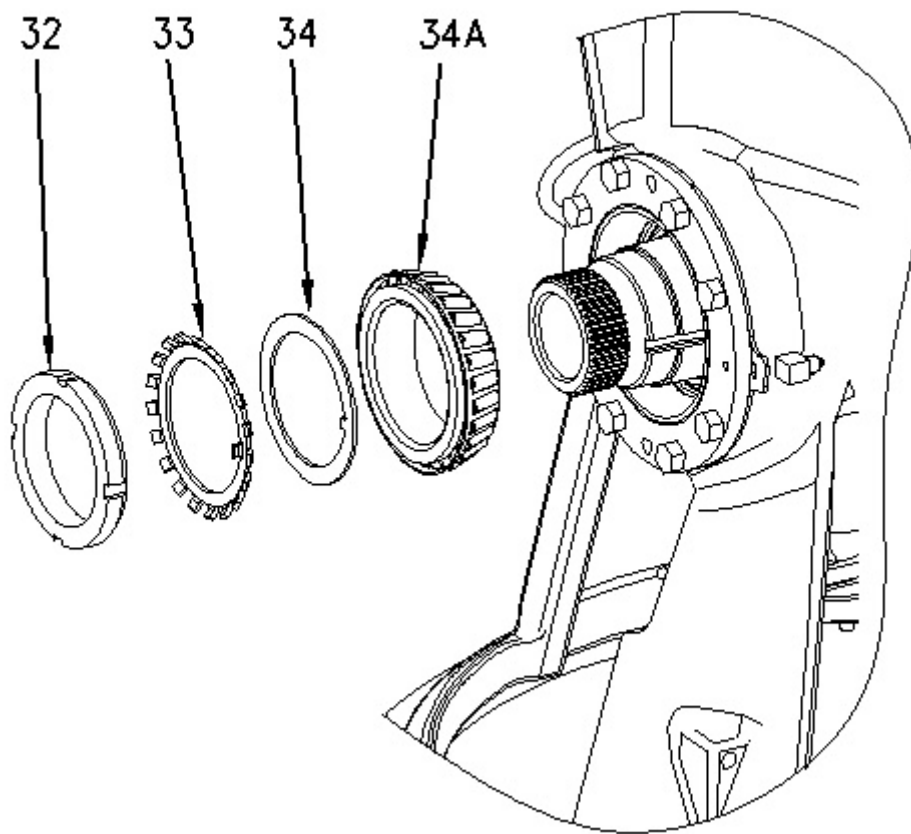
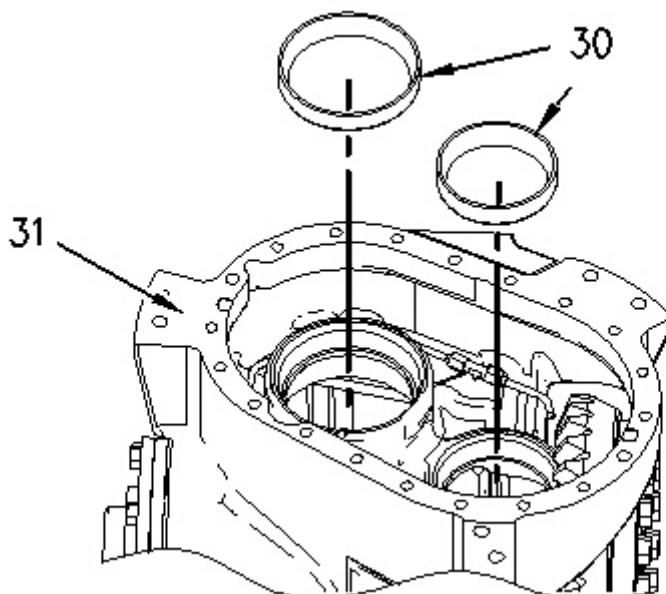


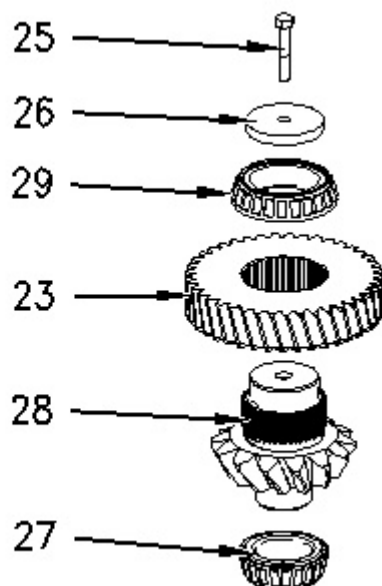
Illustration 8

g00994147

15. Install bearing cone (34A), washer (34), and new lock ring (33).
16. Apply Tooling (H) to the threads and to the face of nut (32). Install nut (32).
17. Use Tooling (C) in order to tighten nut (32) to a torque of $612 \pm 68 \text{ N}\cdot\text{m}$ ($451 \pm 50 \text{ lb ft}$).
18. Bend the tab on lock ring (33) toward nut (32).



19. Lower the temperature of bearing cups (30).
 20. Install bearing cups (30) into case (31).
-



21. Raise the temperature of bearing cones (27) and (29).
 22. Install bearing cone (27) onto gear (28).
 23. Install gear (28) into gear (23).
 24. Install bearing cone (29) onto gear (28).
 25. Position retainer (26).
 26. Install bolt (25).
-

Thank you so much for reading.
Please click the “Buy Now!”
button below to download the
complete manual.



After you pay.

You can download the most
perfect and complete manual in
the world immediately.

Our support email:

ebooklibonline@outlook.com