

Product: TRACK-TYPE TRACTOR

Model: D6N TRACK-TYPE TRACTOR CCK

Configuration: D6N TRACK-TYPE TRACTOR XL Differential Steering CCK00001-UP (MACHINE) POWERED BY 3126B Engine

Disassembly and Assembly

D6N Track-Type Tractor Power Train

Media Number -REN5257-04

Publication Date -01/12/2015

Date Updated -15/12/2015

i02462294

Bevel and Transfer Gears - Disassemble

SMCS - 3011-015

Disassembly Procedure

Table 1

Required Tools			
Tool	Part Number	Part Description	Qty
A	1P-2420	Transmission Repair Stand	1
B	5F-7343	Bearing Puller Gp	1
C	8T-2839	Spanner Wrench	1

Start By:

- Separate the transmission and bevel gears. Refer to Disassembly and Assembly, "Transmission and Bevel Gears - Separate".
-

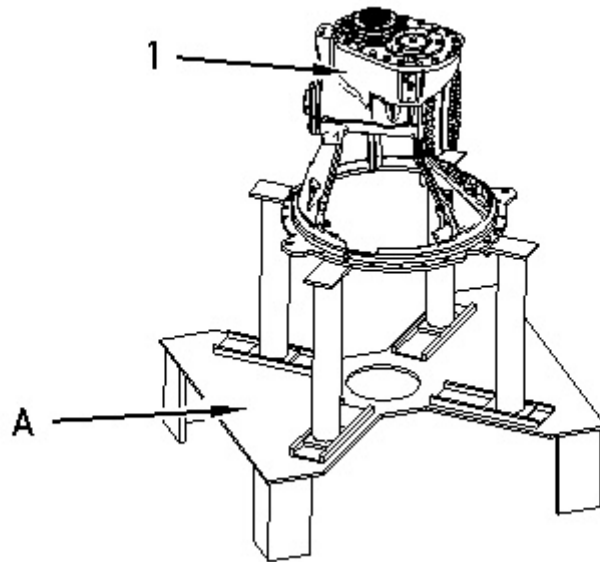


Illustration 1

g00959670

1. Mount bevel and transfer gears (1) onto Tooling (A).

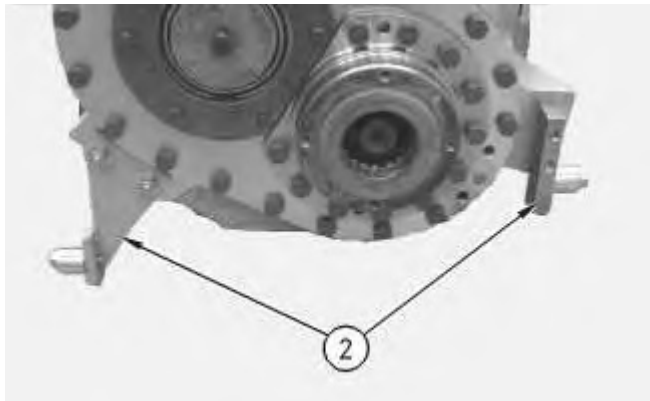


Illustration 2

g00954579

2. Remove bracket assemblies (2).
-

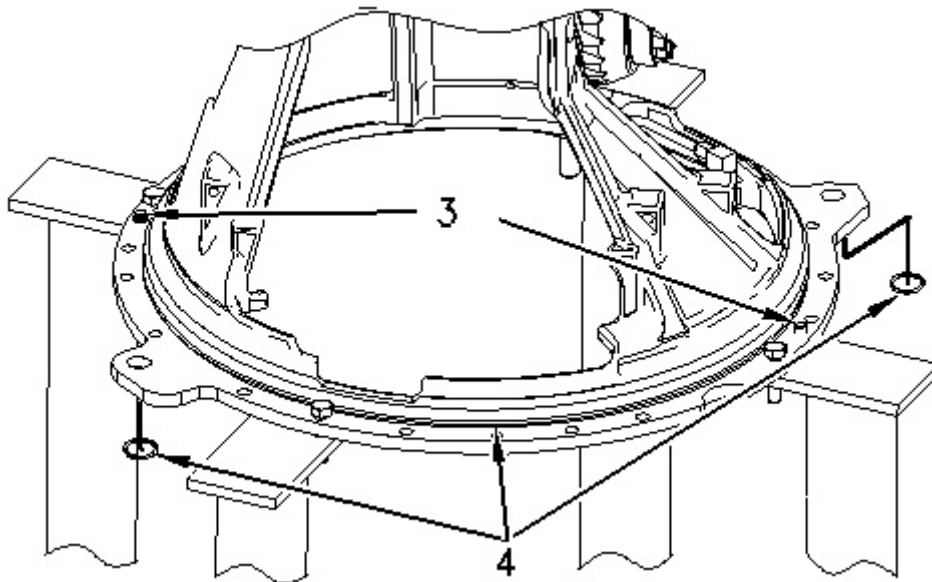


Illustration 3

g00954580

3. Remove O-ring seals (4).
4. If necessary, remove pins (3).

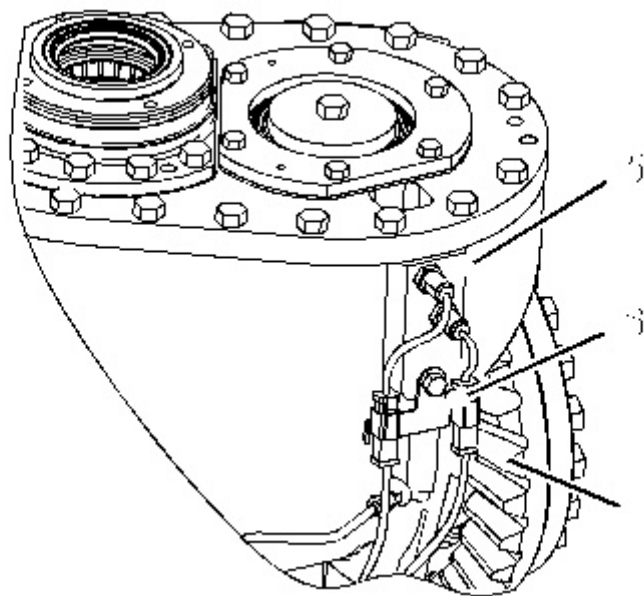


Illustration 4

g01228572

5. Disconnect harness assemblies (7), sensors (5), and bracket (6).

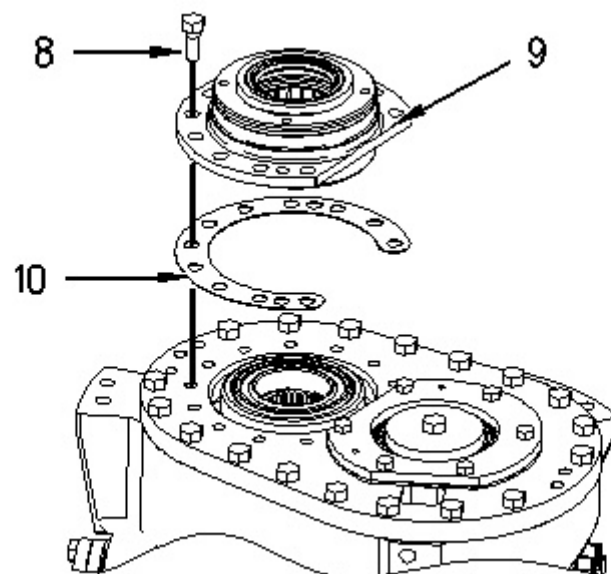


Illustration 5

g00954584

6. Remove bolts (8). Use two bolts (8) in order to remove cage (9).
7. Remove shims (10).

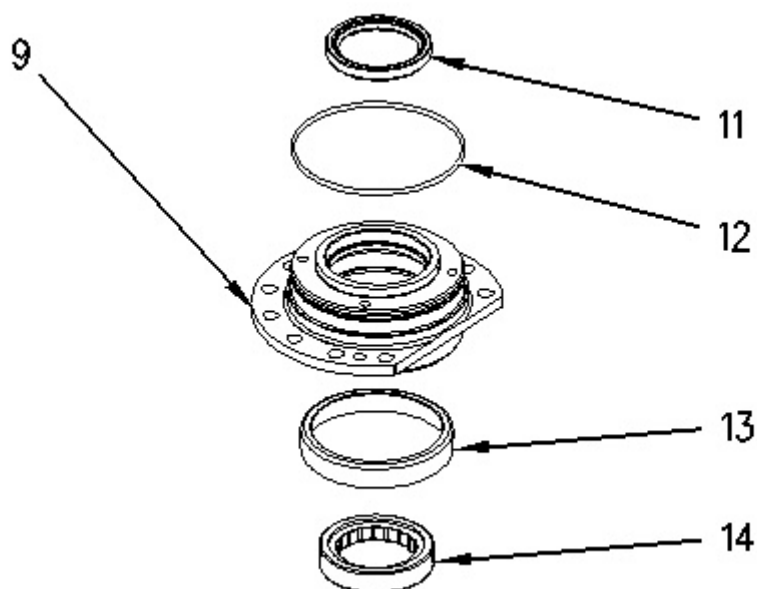


Illustration 6

g00994151

8. Remove O-rings seal (12), seal (11), bearing (14), and bearing cup (13) from cage (9).

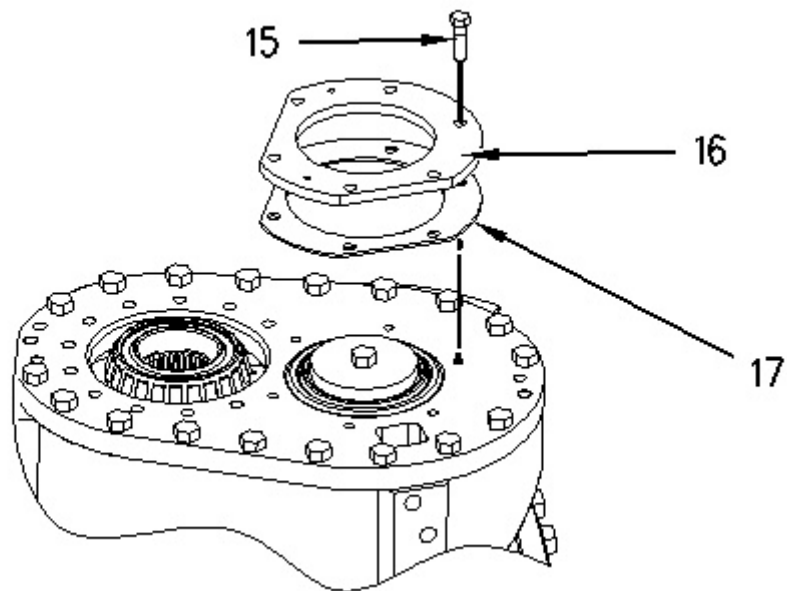


Illustration 7

g00994324

9. Remove bolts (15), cover (16), and shims (17).

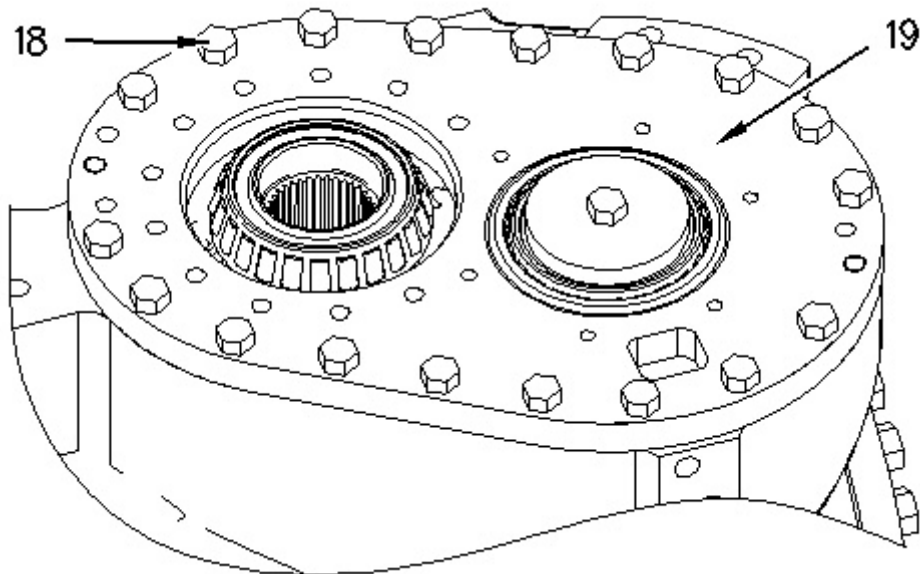


Illustration 8

g00954587

10. Remove bolts (18). Use two bolts (18) in order to remove cover (19). Tighten bolts (18) evenly and remove cover (19).

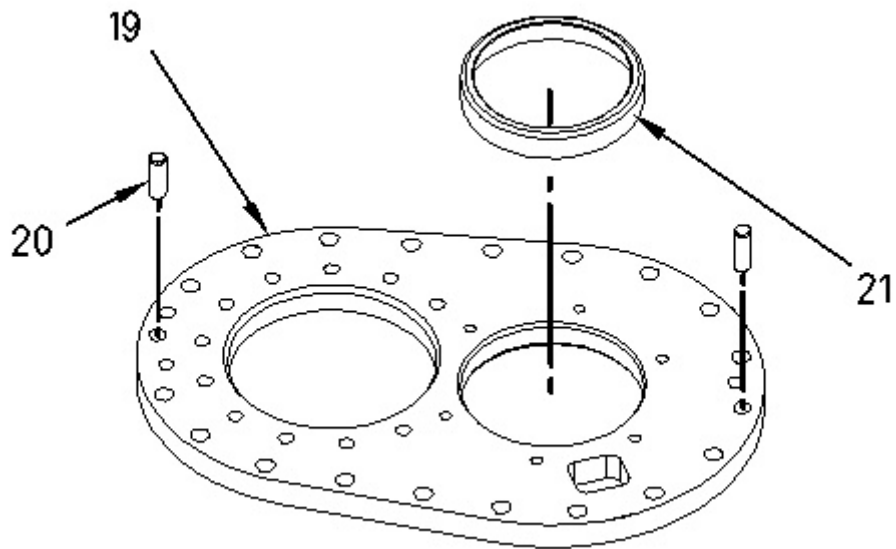


Illustration 9

g00994154

11. If necessary, remove dowels (20) and bearing cup (21) from cover (19).
-

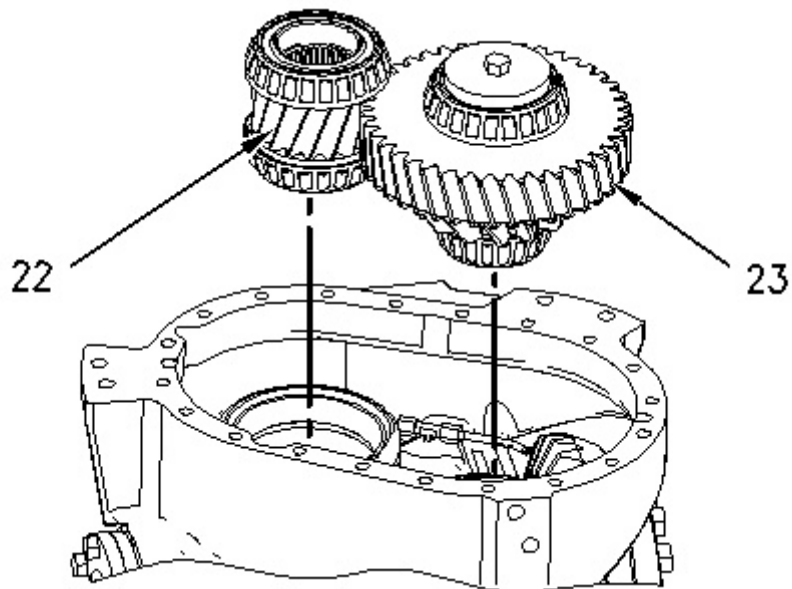


Illustration 10

g00954590

Note: Gears (22) and (23) must be removed from the case assembly at the same time.

12. Remove gear (22) and gear (23) from the case assembly.
-

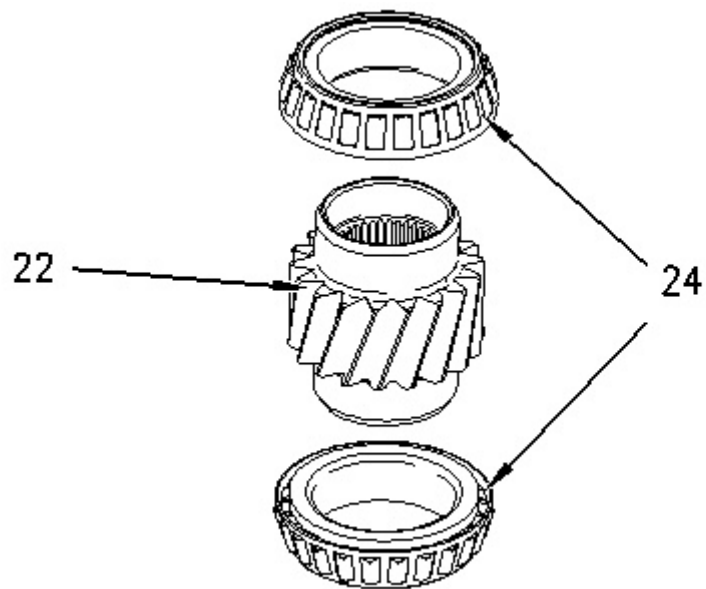


Illustration 11

g00954593

Note: Bearing cones (24) must be destroyed in order to remove the cones from the gear.

13. Remove bearing cones (24) from gear (22).

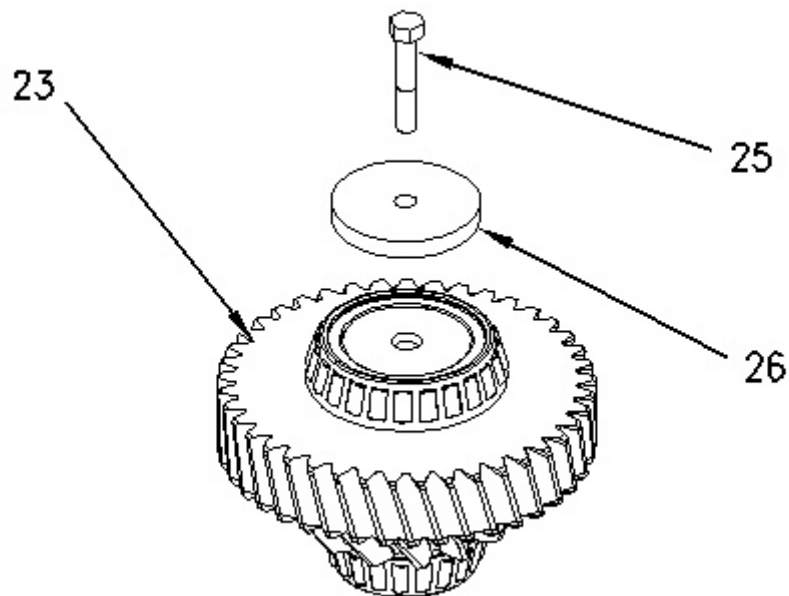


Illustration 12

g00994158

14. Remove bolt (25) and retainer (26) from gear (23).
-

Thank you so much for reading.
Please click the “Buy Now!”
button below to download the
complete manual.



After you pay.

You can download the most
perfect and complete manual in
the world immediately.

Our support email:

ebooklibonline@outlook.com