



# Service Repair Manual

## **Models**

# M322C WHEELED Excavator

---

Product: WHEELED EXCAVATOR

Model: M322C WHEELED EXCAVATOR BDK

Configuration: M322C Excavator BDK00001-02000 (MACHINE) POWERED BY 3056 Engine

## Disassembly and Assembly M318C and M322C Wheeled Excavators Power Train

Media Number -REN8622-01

Publication Date -01/03/2006

Date Updated -17/03/2006

i02253113

### Axle - Remove

SMCS - 3278-011; 3282-011

S/N - BDK2001-UP

S/N - H2E1-UP

### Removal Procedure

Table 1

Required Tools			
Tool	Part Number	Part Description	Qty
A	6V-8336	Bolt	2

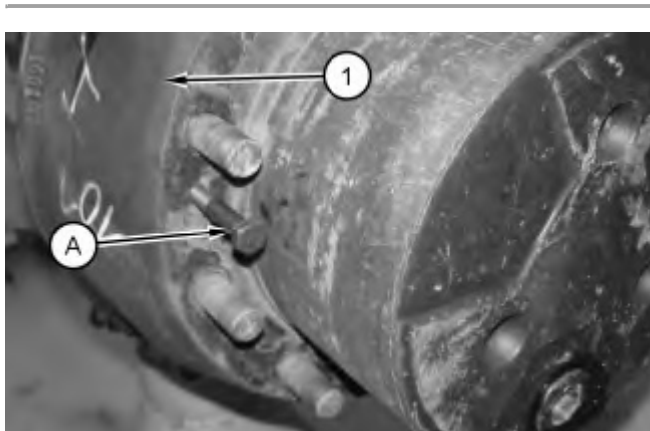


Illustration 1

g01132976

1. Use Tooling (A) in order to remove brake drum (1) .



Illustration 2

g01132977

2. Remove bolts (2) and housing (3) .

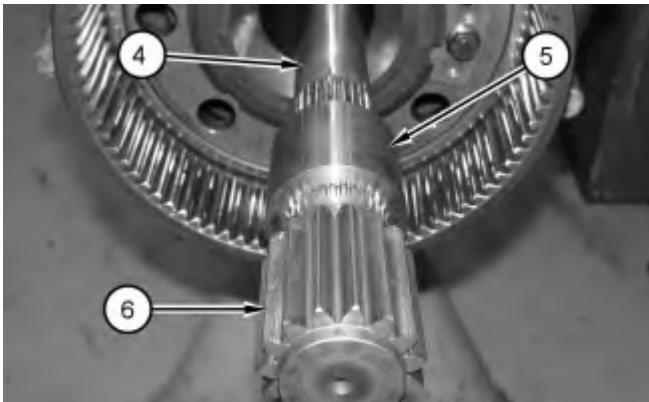


Illustration 3

g01134639

3. Remove gear (6), coupling (5), and axle (4) .

Product: WHEELED EXCAVATOR

Model: M322C WHEELED EXCAVATOR BDK

Configuration: M322C Excavator BDK00001-02000 (MACHINE) POWERED BY 3056 Engine

## Disassembly and Assembly M318C and M322C Wheeled Excavators Power Train

Media Number -REN8622-01

Publication Date -01/03/2006

Date Updated -17/03/2006

i02257858

### Axle - Disassemble - Front Axle

SMCS - 3278-015; 3282-015

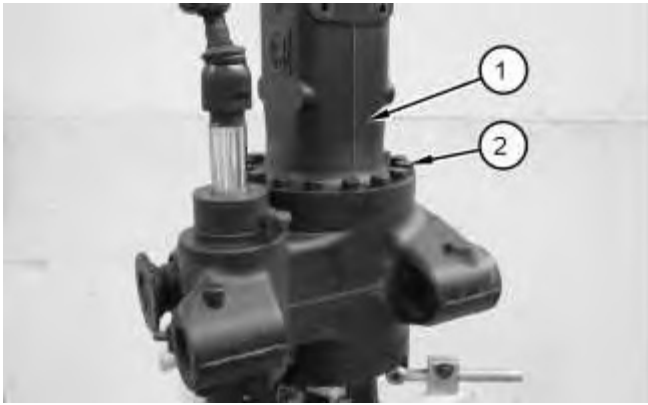
### Disassembly Procedure

Table 1

Required Tools			
Tool	Part Number	Part Description	Qty
A	8T-0980	Bearing Extractor	1
	8T-0504	Bearing Puller	1
	1P-0510	Driver Gp	1
B	8T-0984	Holder	1
C	1U-7600	Slide Hammer Puller Gp	1
D	8T-0979	Puller Gp	1
	1U-5816	Sleeve	1
E	1U-7502	Repair Stand	1

#### Start By:

- A. Remove the front axle. Refer to Disassembly and Assembly, "Axle - Remove".
  - B. Remove the final drive carriers, the hubs, and the brakes. Refer to Disassembly and Assembly, "Final Drive Carriers, Hubs and Brakes - Remove".
  - C. Remove the steering housing and bearings. Refer to Disassembly and Assembly, "Housing and Bearings (Steer Axle) - Remove".
-



---

Illustration 1

g01135670

1. Attach a suitable lifting device to the front axle assembly and position the front axle assembly onto Tooling (E). The weight of the front axle assembly is approximately 213 kg (470 lb).
2. Remove bolts (2) .
3. Attach a suitable lifting device to axle housing (1) and remove axle housing (1). The weight of axle housing (1) is approximately 68 kg (150 lb).



---

Illustration 2

g01135682

4. Remove differential (3) from axle housing (4) .
-

Thank you so much for reading.  
Please click the “Buy Now!”  
button below to download the  
complete manual.



After you pay.

You can download the most  
perfect and complete manual in  
the world immediately.

Our support email:

[ebooklibonline@outlook.com](mailto:ebooklibonline@outlook.com)