

Wheeled Loading Shovel - 406/409

[Section 1 - General Information](#)

[Section 2 - Care and Safety](#)

[Section 3 - Routine Maintenance](#)

[Section A - Attachments](#)

[Section B - Body and Framework](#)

[Section C - Electrics](#)

[Section D - Controls](#)

[Section E - Hydraulics](#)

[Section F - Transmission](#)

[Section G - Brakes](#)

[Section H - Steering](#)

[Section K - Engine](#)



Publication No.
9803/4310-05



Copyright © 2004 JCB SERVICE. All rights reserved. No part of this publication may be reproduced, stored in a retrieval system, or transmitted in any form or by any other means, electronic, mechanical, photocopying or otherwise, without prior permission from JCB SERVICE.

Issued by JCB Technical Publications, JCB Service, World Parts Centre, Beamhurst, Uttoxeter, Staffordshire, ST14 5PA, England. Tel +44 1889 590312 Fax +44 1889 593377

World Class
Customer Support

Contents	Page No.
Introduction	
.....	1 - 1
Schematic Codes	1 - 2
Colour Codes	1 - 2
Black and White Codes	1 - 3
Identifying your Machine	
Unit Identification	1 - 4
Identification Plate	1 - 4
Explanation of Vehicle identification Number (VIN)	1 - 4
Unit Identification	1 - 4
Typical Engine Identification Number	1 - 5
Serial Plates	1 - 6
Typical Axle Plate	1 - 6
Typical Transmission Plate	1 - 7
Typical Chassis Plate	1 - 8
Torque Settings	
Zinc Plated Fasteners and Dacromet Fasteners	1 - 9
Introduction	1 - 9
Bolts and Screws	1 - 9
Hydraulic Connections	1 - 13
'O' Ring Face Seal System	1 - 13
'Torque Stop' Hose System	1 - 16
Service Tools	
Numerical List Section B - Body and Framework	1 - 17
Tool Detail Reference Section B - Body and Framework	1 - 18
Numerical List Section C - Electrics	1 - 21
Tool Detail Reference Section C - Electrics	1 - 22
Numerical List Section E- Hydraulics	1 - 23
Tool Detail Reference Section E- Hydraulics	1 - 25
Numerical List Section F - Transmission	1 - 28
Tool Detail Reference Section F - Transmission	1 - 29
Numerical List Section H - Steering	1 - 32
Tool Detail Reference Section H - Steering	1 - 33
Numerical List Section K - Engine	1 - 34
Tool Detail Reference Section K - Engine	1 - 35
Service Consumables	
Sealing and Retaining Compounds	1 - 36

Introduction

This publication is designed for the benefit of JCB Distributor Service Engineers who are receiving, or have received, training by JCB Technical Training Department.

These personnel should have a sound knowledge of workshop practice, safety procedures, and general techniques associated with the maintenance and repair of hydraulic earthmoving equipment.

Renewal of oil seals, gaskets, etc., and any component showing obvious signs of wear or damage is expected as a matter of course. It is expected that components will be cleaned and lubricated where appropriate, and that any opened hose or pipe connections will be blanked to prevent excessive loss of hydraulic fluid and ingress of dirt. Finally, please remember above all else **SAFETY MUST COME FIRST!**

The manual is compiled in sections, the first three are numbered and contain information as follows:

- 1** General Information - includes torque settings and service tools.
- 2** Care & Safety - includes warnings and cautions pertinent to aspects of workshop procedures etc.
- 3** Routine Maintenance - includes service schedules and recommended lubricants for all the machine.

The remaining sections are alphabetically coded and deal with Dismantling, Overhaul etc. of specific components, for example:

- A** Attachments
- B** Body & Framework...etc.

The page numbering in each alphabetically coded section is not continuous. This allows for the insertion of new items in later issues of the manual.

Section contents, technical data, circuit descriptions, operation descriptions etc. are inserted at the beginning of each alphabetically coded section.

All sections are listed on the front cover; tabbed divider cards align directly with individual sections on the front cover for rapid reference.

Where a torque setting is given as a single figure it may be varied by plus or minus 3%. Torque figures indicated are for dry threads, hence for lubricated threads may be reduced by one third.








'Left Hand' and 'Right Hand' are as viewed from the rear of the machine facing forwards.

This Service Manual covers the following machines: 406

Schematic Codes

Colour Codes

The following colour coding, used on illustrations to denote various conditions of oil pressure and flow, is standardised throughout JCB Service Publications.

	Red	Full Pressure: Pressure generated from operation of a service. Depending on application this may be anything between neutral circuit pressure and MRV operating pressure.
	Pink	Pressure: Pressure that is above neutral circuit pressure but lower than that denoted by Red.
	Orange	Servo: Oil pressure used in controlling a device (servo).
	Blue	Neural: Neutral circuit pressure.
	Green	Exhaust:
	Light Green	Cavitation: Oil subjected to a partial vacuum due to a drop in pressure (cavitation).
	Yellow	Lock Up: Oil trapped within a chamber or line, preventing movement of components (lock up).

Black and White Codes

The following black and white coding, used on illustrations to denote various conditions of oil pressure and flow, is standardised throughout JCB Service Publications.



Neutral Circuit Pressure



Pressure generated by the operation of a service. Depending on application this may be anything between Neutral Circuit Pressure and MRV Operation Pressure.



Oil trapped within a chamber or line preventing movement of components (lock up).



Exhaust.



Pressure that is above Neutral Circuit Pressure but lower than that denoted by the operation of a service.



Oil pressure used in controlling a device (servo).



Oil subject to a partial vacuum due to a drop in pressure (cavitation).

Identifying your Machine

Unit Identification

Identification Plate

Your machine has an identification plate **X** mounted on the left hand side of the machine on the loader arm pillar. The serial numbers of the machine and its major units are stamped on the plate.

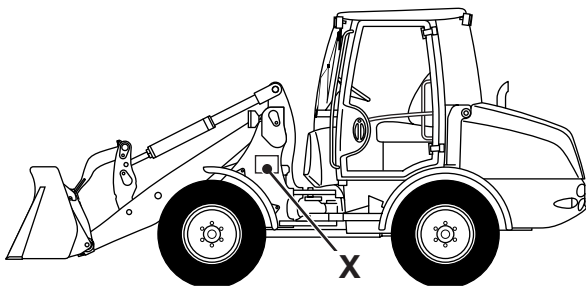


Fig 1.

serial number on the identification plate will be wrong. Either stamp the new number of the unit on the identification plate, or simply stamp out the old number. This will prevent the wrong unit number being quoted when replacement parts are ordered.

The machine and engine serial numbers can help identify exactly the type of equipment you have.

Unit Identification

The engine serial number is stamped on a plate **Y** which is fastened to the top of the engine valve cover.

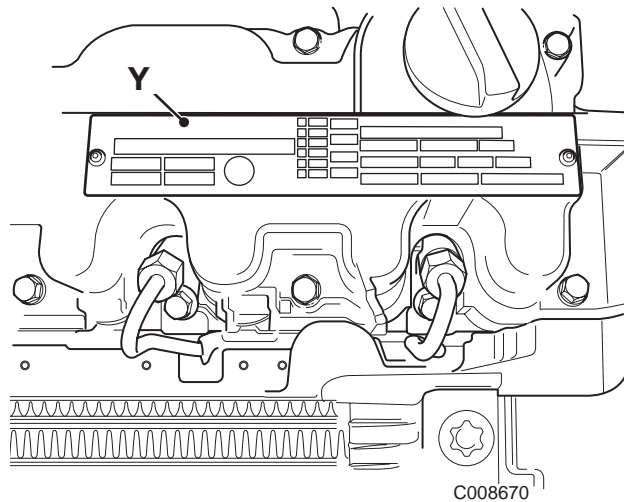


Fig 2.

Explanation of Vehicle identification Number (VIN)

SLP	406	A	L	T	E	1163000
A	B	C	D	E	F	G
A	World Manufacturer Identification SLP = JCB					
B	Machine Model					406
C	Build					A = Articulated O = Others
D	Type					F = farmmaster L = Loader
E	Year of Manufacture					
	2000 = Y	2001 = 1	2002 = 2			
	2003 = 3	2004 = 4	2005 = 5			
	2006 = 6	2007 = 7	2008 = 8			
	2009 = 9	2010 = A				
F	Manufacturing location					E = England
G	Machine Serial Number					1163000

The serial number of each major unit is also stamped on the unit itself. If a major unit is replaced by a new one, the



Typical Engine Identification Number

AA 50261 U 500405 P

A B C D E

A Engine Type

AA = 4 Cylinder naturally aspirated

AB = 4 cylinder turbo

B Build Number

C Country of Origin

D Engine Sequence Number

E Year of Manufacture

Serial Plates

Typical Axle Plate

The axle plate carries the following information:

Type and model number **3-A**, serial number **3-B** and lubricant **3-C**.

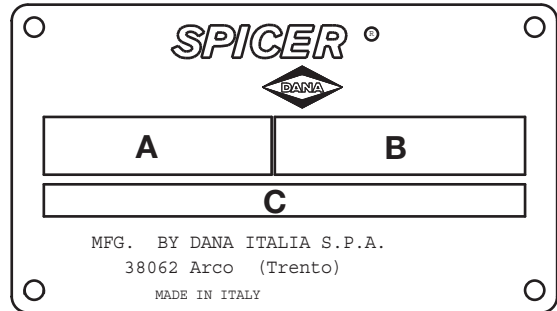


Fig 3.

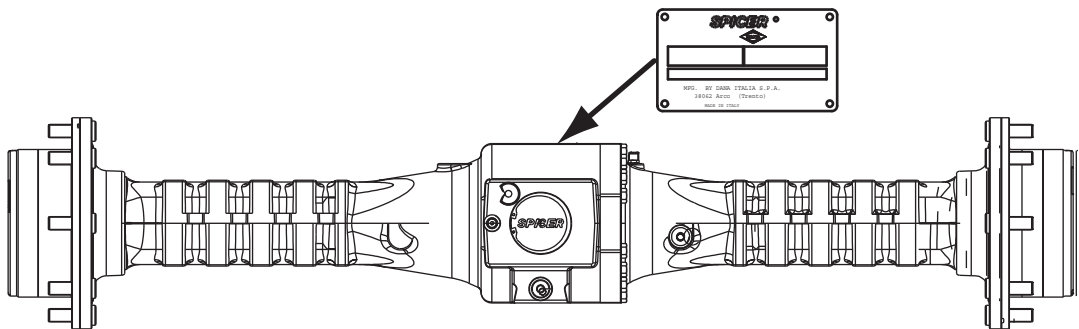


Fig 4. Front Axle Serial Plate Location

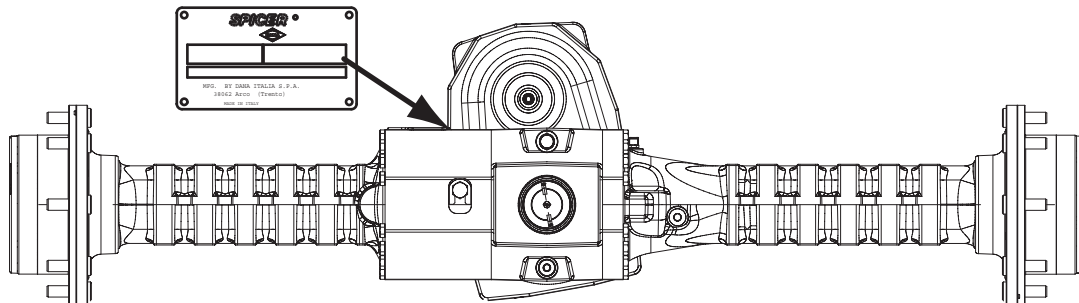


Fig 5. Rear Axle Serial Plate Location

Typical Transmission Plate

The transmission plate carries the following information:

Make, Model Number, Serial Number, Direction of Rotation, → [Fig 6.](#) ([□ 1-7](#)).

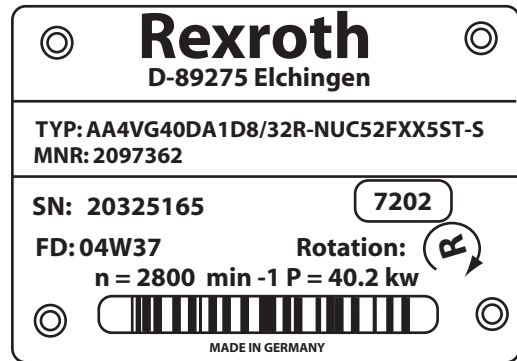


Fig 6.

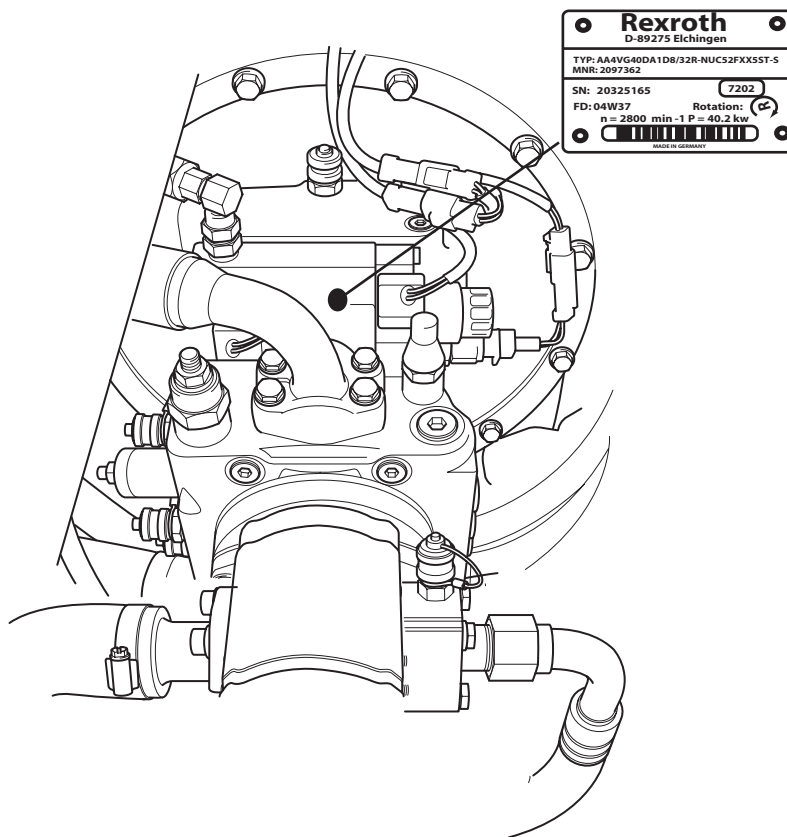


Fig 7. Transmission Serial Plate Location

Typical Chassis Plate

The chassis plate carries the serial number of the machine and its major components.

		JCB EARTHMOVERS LIMITED LAKESIDE WORKS, ROCESTER, UTTOXETER, UNITED KINGDOM	
SLP406AL5E1163000 VIN Vehicle Identification Number		1163000 PIN Product Identification Number	
01009749 ENGINE SERIAL NUMBER		FITA 522 634 FRONT AXLE SERIAL NUMBER	
20325164 TRANSMISSION SERIAL NUMBER		FITA 522 635 REAR AXLE SERIAL NUMBER	
4600 WEIGHT (Kg)	2005 YEAR OF CONST.	44 / 2500 ENGINE POWER Kw @ RPM	
MACHINE TYPE		HOMOLOGATION No.	

Fig 8.

Torque Settings

Zinc Plated Fasteners and Dacromet Fasteners

T11-002

Introduction

Some external fasteners on JCB machines are manufactured using an improved type of corrosion resistant finish. This type of finish is called Dacromet and replaces the original Zinc and Yellow Plating used on earlier machines.

The two types of fasteners can be readily identified by colour and part number suffix. ⇒ [Table 1. Fastener Types](#) (□ 1-9).

Table 1. Fastener Types

Fastener Type	Colour	Part No. Suffix
Zinc and Yellow	Golden finish	'Z' (e.g. 1315/3712Z)
Dacromet	Mottled silver finish	'D' (e.g. 1315/3712D)

Note: As the Dacromet fasteners have a lower torque setting than the Zinc and Yellow fasteners, the torque figures used must be relevant to the type of fastener.

Note: A Dacromet bolt should not be used in conjunction with a Zinc or Yellow plated nut, as this could change the torque characteristics of the torque setting further. For the same reason, a Dacromet nut should not be used with a Zinc or Yellow plated bolt.

Note: All bolts used on JCB machines are high tensile and must not be replaced by bolts of a lesser tensile specification.

Note: Dacromet bolts, due to their high corrosion resistance are used in areas where rust could occur. Dacromet bolts are only used for external applications. They are not used in applications such as gearbox or engine joint seams or internal applications.

Bolts and Screws

Use the following torque setting tables only where no torque setting is specified in the text.

Note: Dacromet fasteners are lubricated as part of the plating process, do not lubricate.

Torque settings are given for the following conditions:

Condition 1

- Un-lubricated fasteners
- Zinc fasteners
- Yellow plated fasteners

Condition 2

- Zinc flake (Dacromet) fasteners
- Lubricated zinc and yellow plated fasteners
- Where there is a natural lubrication. For example, cast iron components

Verbus Ripp Bolts

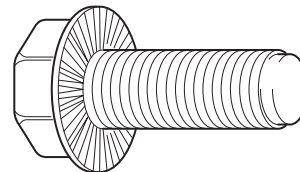


Fig 9.

Torque settings for these bolts are determined by the application. Refer to the relevant procedure for the required settings.



Section 1 - General Information Torque Settings

Zinc Plated Fasteners and Dacromet Fasteners

Table 2. Torque Settings - UNF Grade 'S' Fasteners

Bolt Size		Hexagon (A/F)	Condition 1			Condition 2		
in.	mm	in.	Nm	kgf m	lbf ft	Nm	kgf m	lbf ft
1/4	6.3	7/16	11.2	1.1	8.3	10.0	1.0	7.4
5/16	7.9	1/2	22.3	2.3	16.4	20.0	2.0	14.7
3/8	9.5	9/16	40.0	4.1	29.5	36.0	3.7	26.5
7/16	11.1	5/8	64.0	6.5	47.2	57.0	5.8	42.0
1/2	12.7	3/4	98.0	10.0	72.3	88.0	9.0	64.9
9/16	14.3	13/16	140.0	14.3	103.2	126.0	12.8	92.9
5/8	15.9	15/16	196.0	20.0	144.6	177.0	18.0	130.5
3/4	19.0	1 1/8	343.0	35.0	253.0	309.0	31.5	227.9
7/8	22.2	1 15/16	547.0	55.8	403.4	492.0	50.2	362.9
1	25.4	1 1/2	814.0	83.0	600.4	732.0	74.6	539.9
1 1/8	31.7	1 7/8	1181.0	120.4	871.1	1063.0	108.4	784.0
1 1/4	38.1	2 1/4	1646.0	167.8	1214.0	1481.0	151.0	1092.3

Table 3. Torque Settings - Metric Grade 8.8 Fasteners

Bolt Size		Hexagon (A/F)	Condition 1			Condition 2		
ISO Metric Thread	mm	mm	Nm	kgf m	lbf ft	Nm	kgf m	lbf ft
M5	5	8	5.8	0.6	4.3	5.2	0.5	3.8
M6	6	10	9.9	1.0	7.3	9.0	0.9	6.6
M8	8	13	24.0	2.4	17.7	22.0	2.2	16.2
M10	10	17	47.0	4.8	34.7	43.0	4.4	31.7
M12	12	19	83.0	8.5	61.2	74.0	7.5	54.6
M16	16	24	205.0	20.9	151.2	184.0	18.8	135.7
M20	20	30	400.0	40.8	295.0	360.0	36.7	265.5
M24	24	36	690.0	70.4	508.9	621.0	63.3	458.0
M30	30	46	1372.0	139.9	1011.9	1235.0	125.9	910.9
M36	36	55	2399.0	244.6	1769.4	2159.0	220.0	1592.4



Section 1 - General Information Torque Settings

Zinc Plated Fasteners and Dacromet Fasteners

Table 4. Metric Grade 10.9 Fasteners

Bolt Size		Hexagon (A/F)	Condition 1			Condition 2		
ISO Metric Thread	mm	mm	Nm	kgf m	lbf ft	Nm	kgf m	lbf ft
M5	5	8	8.1	0.8	6.0	7.3	0.7	5.4
M6	6	10	13.9	1.4	10.2	12.5	1.3	9.2
M8	8	13	34.0	3.5	25.0	30.0	3.0	22.1
M10	10	17	67.0	6.8	49.4	60.0	6.1	44.2
M12	12	19	116.0	11.8	85.5	104.0	10.6	76.7
M16	16	24	288.0	29.4	212.4	259.0	26.4	191.0
M20	20	30	562.0	57.3	414.5	506.0	51.6	373.2
M24	24	36	971.0	99.0	716.9	874.0	89.1	644.6
M30	30	46	1930.0	196.8	1423.5	1737.0	177.1	1281.1
M36	36	55	3374.0	344.0	2488.5	3036.0	309.6	2239.2

Table 5. Metric Grade 12.9 Fasteners

Bolt Size		Hexagon (A/F)	Condition 1			Condition 2		
ISO Metric Thread	mm	mm	Nm	kgf m	lbf ft	Nm	kgf m	lbf ft
M5	5	8	9.8	1.0	7.2	8.8	0.9	6.5
M6	6	10	16.6	1.7	12.2	15.0	1.5	11.1
M8	8	13	40.0	4.1	29.5	36.0	3.7	26.5
M10	10	17	80.0	8.1	59.0	72.0	7.3	53.1
M12	12	19	139.0	14.2	102.5	125.0	12.7	92.2
M16	16	24	345.0	35.2	254.4	311.0	31.7	229.4
M20	20	30	674.0	68.7	497.1	607.0	61.9	447.7
M24	24	36	1165.0	118.8	859.2	1048.0	106.9	773.0
M30	30	46	2316.0	236.2	1708.2	2084.0	212.5	1537.1
M36	36	55	4049.0	412.9	2986.4	3644.0	371.6	2687.7



Section 1 - General Information Torque Settings

Zinc Plated Fasteners and Dacromet Fasteners

Table 6. Torque Settings - Rivet Nut Bolts/Screws

Bolt Size		Nm	kgf m	lbf ft
ISO Metric Thread	mm			
M3	3	1.2	0.1	0.9
M4	4	3.0	0.3	2.0
M5	5	6.0	0.6	4.5
M6	6	10.0	1.0	7.5
M8	8	24.0	2.5	18.0
M10	10	48.0	4.9	35.5
M12	12	82.0	8.4	60.5

Table 7. Torque Settings - Internal Hexagon Headed Cap Screws (Zinc)

Bolt Size	Nm	kgf m	lbf ft
ISO Metric Thread			
M3	2.0	0.2	1.5
M4	6.0	0.6	4.5
M5	11.0	1.1	8.0
M6	19.0	1.9	14.0
M8	46.0	4.7	34.0
M10	91.0	9.3	67.0
M12	159.0	16.2	117.0
M16	395.0	40.0	292.0
M18	550.0	56.0	406.0
M20	770.0	79.0	568.0
M24	1332.0	136.0	983.0

Buy Now



Our support email:

ebooklibonline@outlook.com