

## VMD70/VMD100

[Section 1 - General Information](#)

[Section 2 - Care and Safety](#)

[Section 3 - Routine Maintenance](#)

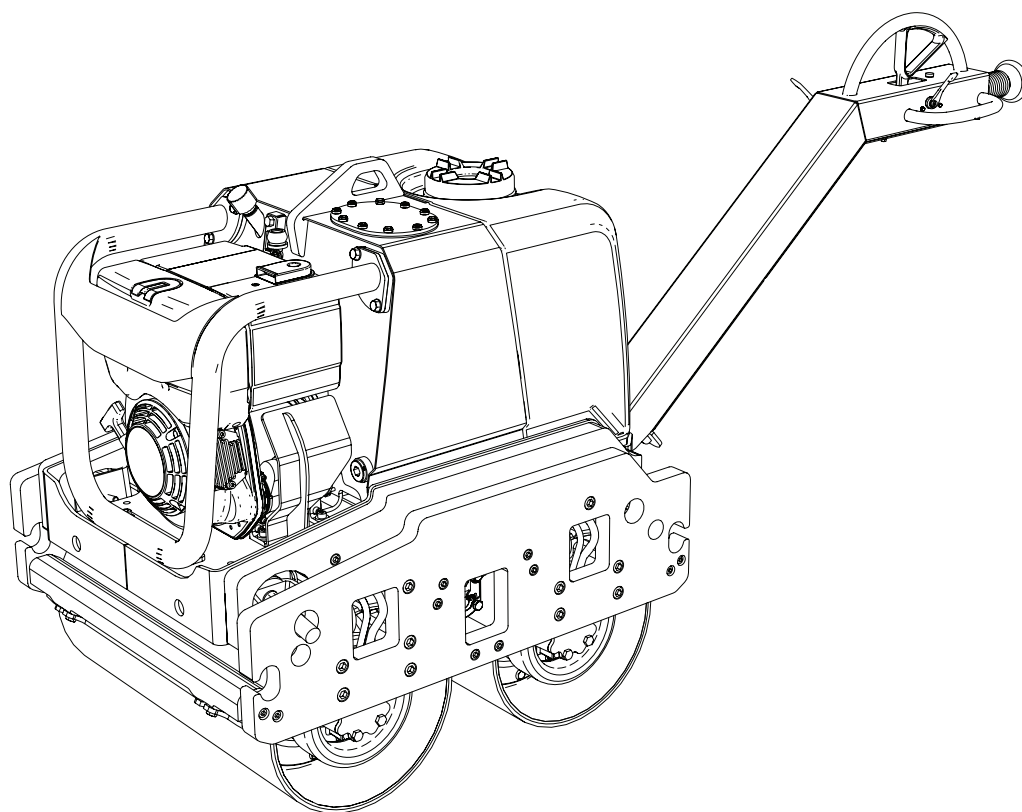
[Section B - Body and Framework](#)

[Section C - Electrics](#)

[Section E - Hydraulics](#)

[Section K - Engine](#)

[Section L - Vibration](#)



Publication No.  
**9813/0300-3**



Copyright © 2004 JCB SERVICE. All rights reserved. No part of this publication may be reproduced, stored in a retrieval system, or transmitted in any form or by any other means, electronic, mechanical, photocopying or otherwise, without prior permission from JCB SERVICE.

Issued by JCB Technical Publications, JCB Aftermarket Training, Woodseat, Rocester, Staffordshire, ST14 5BW, England. Tel +44 1889 591300 Fax +44 1889 591400

World Class  
Customer Support





# Section 1 - General Information

---

<b>Contents</b>	<b>Page No.</b>
<b>Introduction</b>	
About This Manual .....	1-1
Machine Model and Serial Number .....	1-1
Using the Service Manual .....	1-1
Section Numbering .....	1-1
Left Side, Right Side .....	1-1
Cross References .....	1-2
Identifying Your Machine .....	1-3
Machine Identification Plate .....	1-3
Component Identification Plates .....	1-3
<b>Service Tools</b>	
Numerical List .....	1-5
Tool Detail Reference .....	1-6
Section B - Body and Framework .....	1-6
Section C - Electrics .....	1-8
Section E - Hydraulics .....	1-9
Section L - Vibration .....	1-13
<b>Torque Settings</b>	
Zinc Plated Fasteners and Dacromet Fasteners .....	1-15
Introduction .....	1-15
Bolts and Screws .....	1-15
Hydraulic Connections .....	1-19
'O' Ring Face Seal System .....	1-19
'Torque Stop' Hose System .....	1-22
<b>Service Consumables</b>	
Sealing and Retaining Compounds .....	1-23



# Section 1 - General Information

---

Contents

Page No.

# Introduction

## About This Manual

### Machine Model and Serial Number

This manual provides information for the following model(s) in the JCB machine range:

- VMD70/100 from SN 1601000 to 1601999 and 2703000 to 2704999.

### Using the Service Manual

This publication is designed for the benefit of JCB Distributor Service Engineers who are receiving, or have received, training by JCB Technical Training Department.

These personnel should have a sound knowledge of workshop practice, safety procedures, and general techniques associated with the maintenance and repair of hydraulic earthmoving equipment.

The illustrations in this publication are for guidance only. Where the machines differ, the text and/or the illustration will specify.

General warnings in Section 2 are repeated throughout the manual, as well as specific warnings. Read all safety statements regularly, so you do not forget them.

Renewal of oil seals, gaskets, etc., and any component showing obvious signs of wear or damage is expected as a matter of course. It is expected that components will be cleaned and lubricated where appropriate, and that any opened hose or pipe connections will be blanked to prevent excessive loss of hydraulic fluid and ingress of dirt.

Where a torque setting is given as a single figure it may be varied by plus or minus 3%. Torque figures indicated are for dry threads, hence for lubricated threads may be reduced by one third.

The manufacturer's policy is one of continuous improvement. The right to change the specification of the machine without notice is reserved. No responsibility will be accepted for discrepancies which may occur between specifications of the machine and the descriptions contained in this publication.

Finally, please remember above all else safety must come first!

### Section Numbering

The manual is compiled in sections, the first three are numbered and contain information as follows:

- 1 General Information - includes torque settings and service tools.
- 2 Care and Safety - includes warnings and cautions pertinent to aspects of workshop procedures etc.
- 3 Maintenance - includes service schedules and recommended lubricants for all the machine.

The remaining sections are alphabetically coded and deal with Dismantling, Overhaul etc. of specific components, for example:

- A Attachments
- B Body and Framework, etc.

Section contents, technical data, circuit descriptions, operation descriptions etc. are inserted at the beginning of each alphabetically coded section.

### Left Side, Right Side

In this manual, 'left' **A** and 'right' **B** mean your left and right when you stand correctly behind the machine and face forwards.



### Cross References

T1-004\_2

In this publication, page cross references are made by presenting the subject title printed in bold, italic and underlined. It is preceded by the 'go to' symbol. The number of the page upon which the subject begins, is indicated within the brackets. For example: → ***Cross***

***References ( 1-2).***

## Identifying Your Machine

### Machine Identification Plate

Your machine has an identification plate mounted as shown. → [Fig 1.](#) ([1-3](#)).

The machine and engine serial numbers can help identify exactly the type of equipment you have.

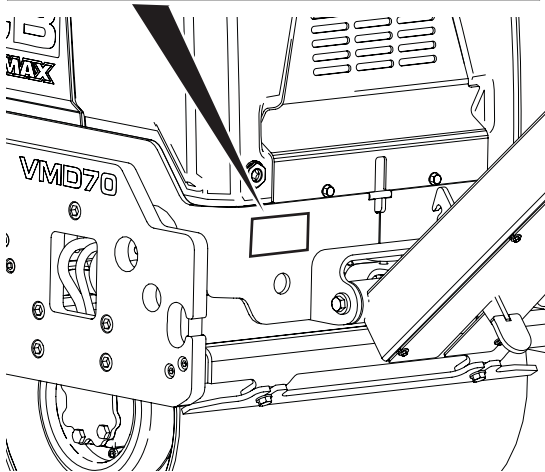
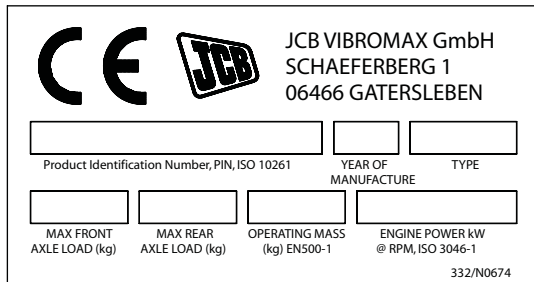


Fig 1.

T052960-2

### Typical Product Identification Number (PIN)

1	2	3	4
JCB	VMD	C	02802400

- 1 World Manufacturer Code (JCB)
- 2 Machine Type and Model
- 3 Randomly Generated Check Letter
- 4 Machine Serial Number (02802400)

### Component Identification Plates

#### Engine Identification Plate

The engine serial number is located on the engine crankcase next to the dipstick.



# Section 1 - General Information

## Introduction

Identifying Your Machine

---

Page left intentionally blank



# Service Tools

## Numerical List

The tools listed in the table are special tools required for carrying out the procedures described in this manual. These tools are available from JCB Service.

Some tools are available as kits or sets, the part numbers for parts within such kits or sets are not listed here. For full

details of all tools, including the content of kits and sets, refer to **Tool Detail Reference, Section 1**.

**Note:** Tools other than those listed will be required. It is expected that such general tools will be available in any well equipped workshop or be available locally from any good tool supplier.

Part Number	Description	See Section
-	Bonded Washers - see <b>Tool Detail Reference (Section 1)</b> for content	E
-	Female Cone Blanking Caps - see <b>Tool Detail Reference (Section 1)</b> for content	E
-	Female Connectors - see <b>Tool Detail Reference (Section 1)</b> for content	E
-	Hydraulic Flow Test Equipment - see <b>Tool Detail Reference (Section 1)</b> for content	E
-	Male Adapters - BSP x BSP - see <b>Tool Detail Reference (Section 1)</b> for content	E
-	Male Adapters - BSP x NPT (USA only) - see <b>Tool Detail Reference (Section 1)</b> for content	E
-	Male Cone Blanking Caps - see <b>Tool Detail Reference (Section 1)</b> for content	E
-	Pressure Test Points - Adaptors - see <b>Tool Detail Reference (Section 1)</b> for content	E
-	Pressure Test Points - 'T' Adaptors - see <b>Tool Detail Reference (Section 1)</b> for content	E
-	Rivet Nut Tool - see <b>Tool Detail Reference (Section 1)</b> for content	B
4104/1310	Hand Cleaner	B
892/00253	Hydraulic Circuit Pressure Test Kit - see <b>Tool Detail Reference (Section 1)</b> for content	E
892/00254	Hose	E
892/00279	Gauge	E
892/00280	Gauge	E
892/00284	Digital Tachometer	C
892/00285	Hyd. Oil Temperature Probe	C
892/00298	Fluke Meter	C
892/00346	Gauge	E
892/00347	Connector	E
892/01246	Vibromax male to JCB female threaded adaptor	E
892/01247	JCB male to Vibromax female threaded adaptor	E
892/12345	Frequency and Vibration Measuring Tool	E
993/68100	Slide Hammer Kit - see <b>Tool Detail Reference (Section 1)</b> for content	B
892/00285	100 amp Shunt	C

**Buy Now**



Our support email:

[ebooklibonline@outlook.com](mailto:ebooklibonline@outlook.com)