

TM11431 - 326D, 328D, 329D, 332D and 333D Skid Steer Loader(Manual Controls)

Track Adjuster Cylinder Disassemble and Assemble

Track Adjuster Cylinder Disassemble and Assemble

 **CAUTION:**

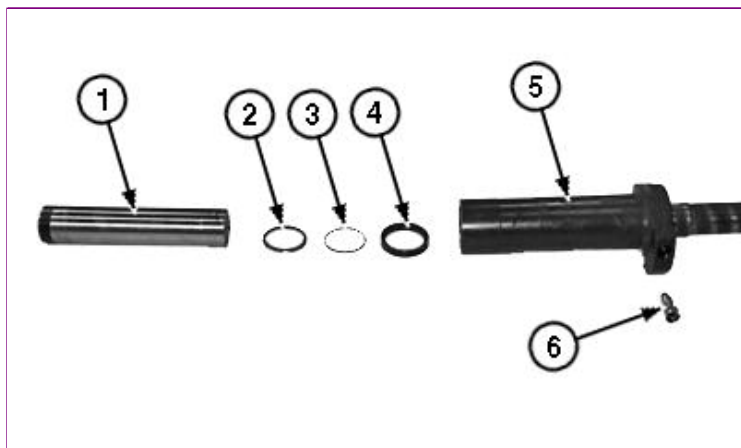
Prevent cylinder damage, spring or rod may break if dropped while handling, transporting or disassembling. Nicks or weld craters in spring and rod assembly can cause stress concentration resulting in a weak spot. Weak spots may result in immediate or eventual failure of spring or rod creating a risk of personal injury. Put a heavy protective covering around spring assembly when handling, transporting or disassembling.

A compression tool MUST be used for disassembly and assembly because of extreme preload on spring.

 **CAUTION:**

Prevent personal injury from heavy component. Use appropriate lifting device.

Item	Measurement	Specification
Track Adjuster and Recoil Spring	Weight (approximate)	32 kg 70 lb.



1. T213214A-UN: Track Adjuster Cylinder

LEGEND:

- 1 - Piston Rod
- 2 - Outer Seal
- 3 - Seal Retaining Ring
- 4 - Inner Seal
- 5 - Cylinder
- 6 - Track Adjuster Valve

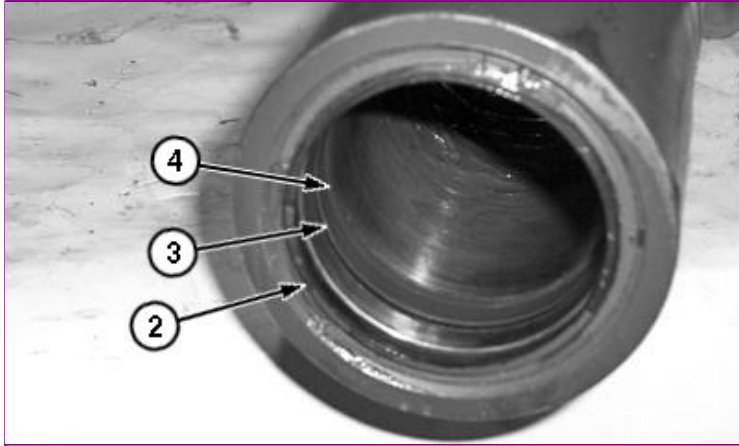
Remove track adjuster and recoil spring assembly from machine. [See Track Adjuster and Recoil Spring Assembly Remove and Install](#) . (Group 0130.)

2. **NOTE:**

It is not necessary to remove recoil spring to replace cylinder seals (12 and 13).

Remove recoil spring (8), if necessary. [See Track Adjuster Recoil Spring Remove and Install](#) . (Group 0130.)

3. Tighten track adjuster valve (6).
4. Pump cylinder (5) with grease and remove piston rod (1) from cylinder.
5. Clean out excess grease from cylinder to access seals in end of cylinder.



6. T213208A-UN: Cylinder Seals (S.N. —192141)

LEGEND:

- 2 - Inner Seal
- 3 - Seal Retaining Ring
- 4 - Outer Seal



- TX1081382A-UN: Cylinder Seals (S.N. 192142—)

LEGEND:

- 2 - Inner Seal
- 3 - Seal Retaining Ring
- 4 - Outer Seal

Remove outer seal (2) from cylinder.

7. **NOTE:**

For cylinders on machines (S.N. —192141), remove seal retaining ring (3) from inner seal (4) before removing seal from cylinder.

Remove seal retaining ring (3) and inner seal (4) from cylinder.

8. Clean and inspect parts for damage. Repair or replace parts as necessary.

9. **NOTE:**

For cylinders on machines (S.N. —192141), install inner seal in cylinder with retaining ring groove facing outward. Install seal retaining ring into groove of inner seal.

Install inner seal and seal retaining ring in cylinder.

10. Install outer seal in cylinder.
11. Loosen track adjuster valve.
12. Apply grease to piston rod and install in cylinder.
13. Completely compress piston rod in cylinder.
14. Tighten track adjuster valve.
15. Install recoil spring, if necessary. [See Track Adjuster Recoil Spring Remove and Install](#) . (Group 0130.)
16. Install track adjuster and recoil spring assembly to machine. [See Track Adjuster and Recoil Spring Assembly Remove and Install](#) . (Group 0130.)

TM11431 - 326D, 328D, 329D, 332D and 333D Skid Steer Loader(Manual Controls)

Axle Housing Remove and Install

Axle Housing Remove and Install

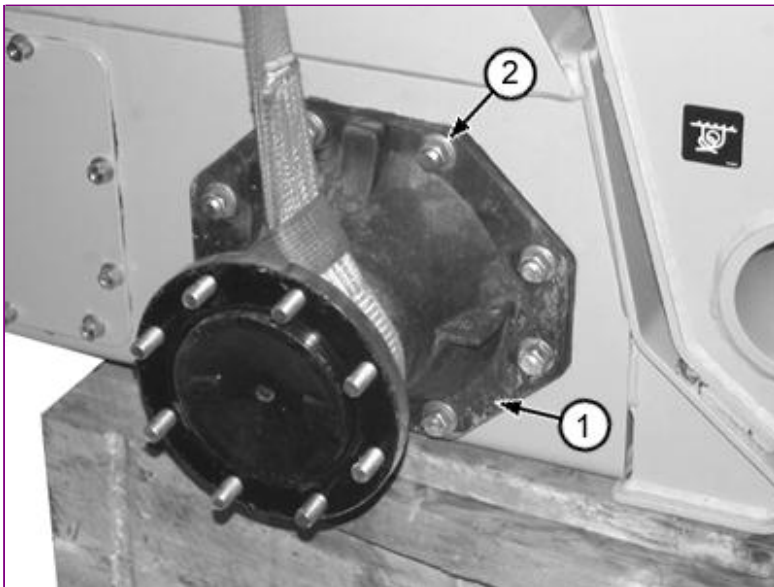
1. Remove front attachment and park machine on flat level surface.
2. Raise and block machine. [See Raising and Blocking Machine](#) . (Group 1740.)
3. Remove wheel from axle being serviced. [See Wheel Remove and Install](#) . (Group 0110.)
4. Drain chain case oil. [See Change Chain Case Oil](#) . (Operator's Manual.)
5. Clean area around axle housing to prevent debris from entering chain case.

6.



CAUTION:

Prevent possible crushing injury from heavy component. Use appropriate lifting device.



T198842A-UN: Axle Housing

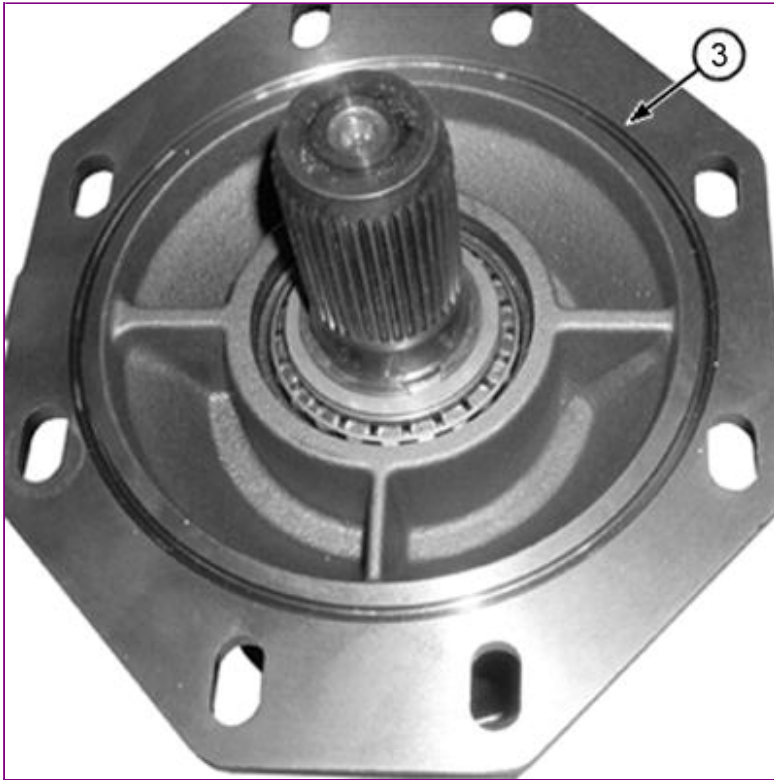
LEGEND:

- 1 - Axle Housing
- 2 - Nut (8 used)

Support axle housing (1) using appropriate lifting device. Remove axle housing.

Item	Measurement	Specification
Axle Housing	Weight (approximate)	33 kg 72 lb.

7. Clean and inspect parts. Repair or replace parts as necessary. [See Axle Housing Disassemble and Assemble](#) . (Group 0201.)
-



8. T198847A-UN: Axle Housing O-Ring

LEGEND:

3 - O-Ring

Install new O-ring (3) in groove on axle housing.

9. Fill axle housing with oil.

Item	Measurement	Specification
Axle Housing	Capacity	237 mL 8 oz.

Thank you so much for reading.
Please click the “Buy Now!”
button below to download the
complete manual.



After you pay.

You can download the most
perfect and complete manual in
the world immediately.

Our support email:

ebooklibonline@outlook.com