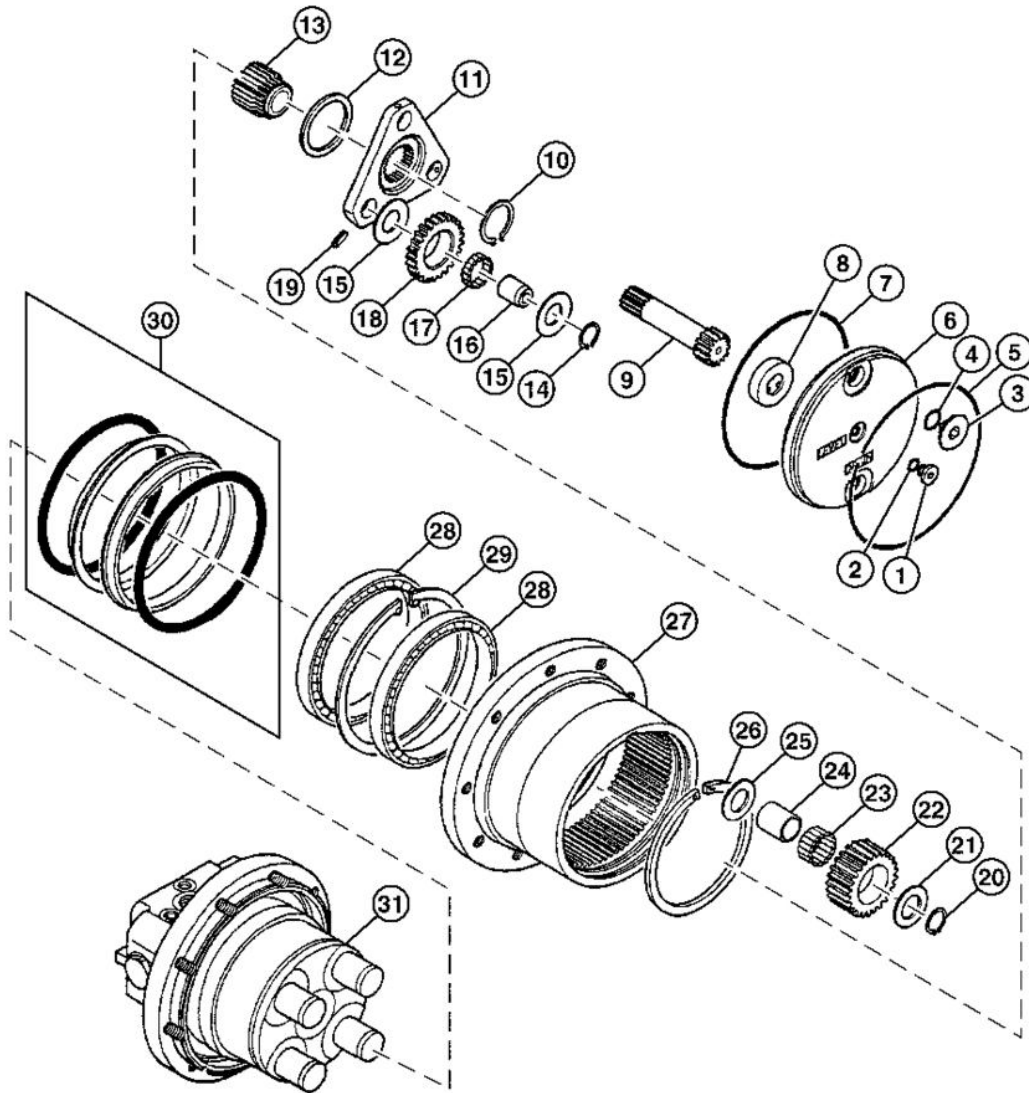


TM13324X19 - 26G Compact Excavator (PIN: 1FF026GX__K260001-)
Travel Gear Case Disassemble and Assemble

Travel Gear Case Disassemble and Assemble

Disassemble Travel Gear Case



TX1135944

TX1135944-UN: Travel Gear Case

LEGEND:

- 1 - Check Plug
- 2 - O-Ring
- 3 - Plug (2 used)
- 4 - O-Ring (2 used)
- 5 - Wire Retainer
- 6 - Cover
- 7 - O-Ring
- 8 - Thrust Ring
- 9 - Input Shaft and First Stage Sun Gear
- 10 - Snap Ring
- 11 - First Stage Planetary Carrier
- 12 - Thrust Washer
- 13 - Second Stage Sun Gear
- 14 - Snap Ring (3 used)
- 15 - Thrust Washer (6 used)
- 16 - Bearing Pin (3 used)
- 17 - Needle Bearing (3 used)
- 18 - First Stage Planetary Gear (3 used)
- 19 - Spring Pin (3 used)
- 20 - Snap Ring (4 used)
- 21 - Thrust Washer (4 used)
- 22 - Second Stage Planetary Gear (4 used)
- 23 - Needle Bearing (4 used)
- 24 - Bearing Race (4 used)
- 25 - Thrust Washer (4 used)
- 26 - Snap Ring

- 27 - Ring Gear
- 28 - Bearing (2 used)
- 29 - Snap Ring
- 30 - Metal Face Seal
- 31 - Travel Motor Housing and Second Stage Planetary Carrier

-: Specifications

SPECIFICATIONS	
Travel Gear Case and Motor Assembly Weight (approximate)	48 kg 110 lb.
Travel Gear Case Oil Capacity	0.6 L 20 oz.
Plug Torque	47—52 N·m 35—38 lb.-ft.
Check Plug Torque	12—18 N·m 107—159 lb.-in.

1.



CAUTION:

Prevent possible crushing injury from heavy component. Use appropriate lifting device.

Remove travel gear case using appropriate lifting device. [See Travel Gear Case Remove and Install](#) . (Group 0250.)

Item	Measurement	Specification
Travel Gear Case and Motor Assembly	Weight (approximate)	48 kg 110 lb.

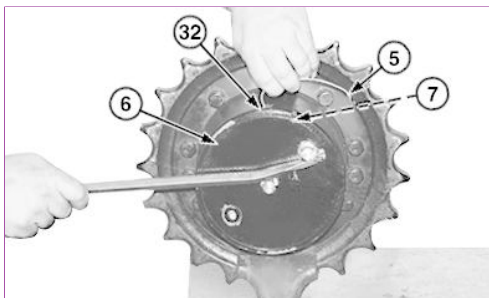
2. Drain gear oil. [See Drain and Refill Travel Gear Case Oil](#) . (Operator's Manual.)

Item	Measurement	Specification
Travel Gear Case Oil	Capacity	0.6 L 20 oz.

3. Remove sprocket. [See Sprocket Remove and Install](#) . (Group 0130.)

4. Apply alignment marks at mating positions of cover (6), ring gear (27), and travel motor housing and second stage planetary carrier (31).

5. Remove check plug (1), plugs (3), and O-rings (2 and 4).



6. TX1135951A-UN: Travel Gear Case Cover

LEGEND:

- 5 - Wire Retainer
- 6 - Cover
- 7 - O-Ring
- 32 - Retainer Port

Rotate cover until the end of wire retainer (5) is visible through retainer port (32). Continue rotating the cover, pulling the wire retainer out through retainer port.

7. **IMPORTANT:**

Avoid possible damage to O-ring (7). Use caution not to damage O-ring when removing cover.

Remove cover and O-ring (7).

8. Remove thrust ring (8).

9. **IMPORTANT:**

Avoid possible damage to gear case components. Spring pins (19) and bearing pins (16) are compressed into first stage planetary carrier (11) and cannot be removed. If spring pins or bearing pins are damaged, replace first stage planetary carrier as an assembly.

NOTE:

Keep parts for each planetary gear together.

Remove snap rings (14), thrust washers (15), first stage planetary gears (18), and needle bearings (17) from bearing pins (16).

10. Remove input shaft and first stage sun gear (9).

11. Remove snap ring (10), first stage planetary carrier (11), and thrust washer (12).

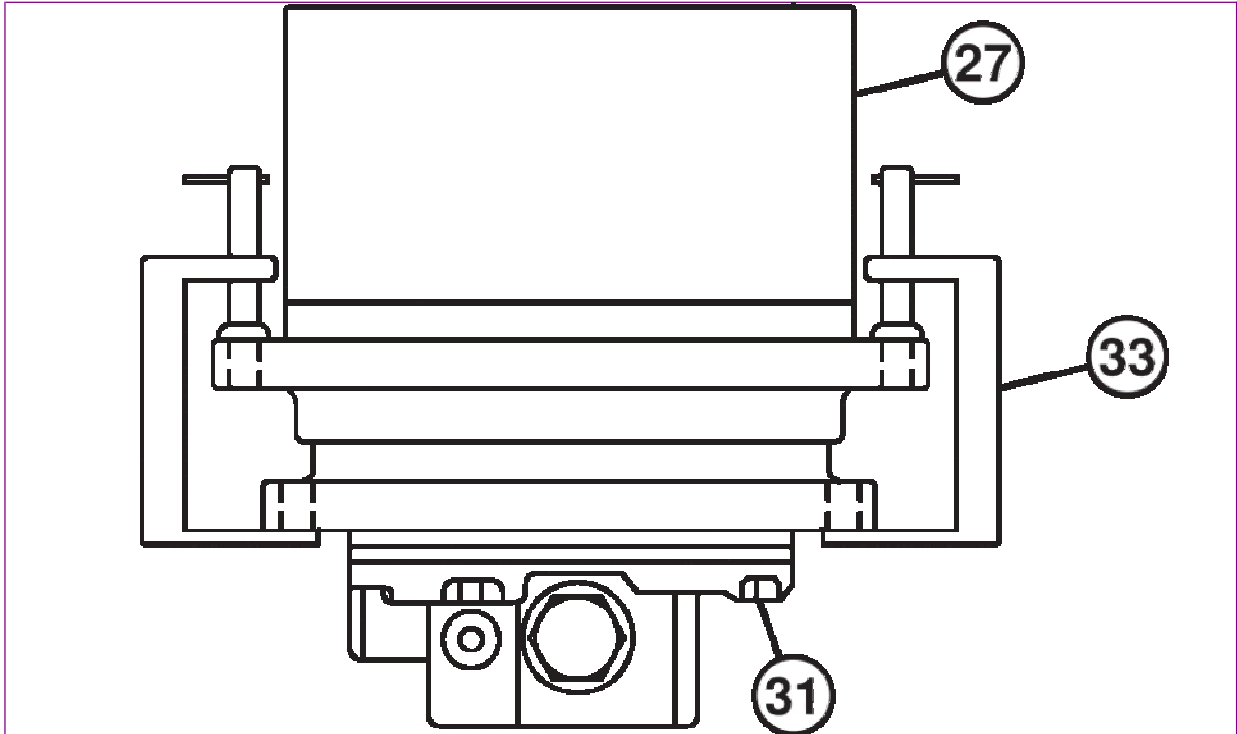
12. **NOTE:**

Keep parts for each planetary gear together.

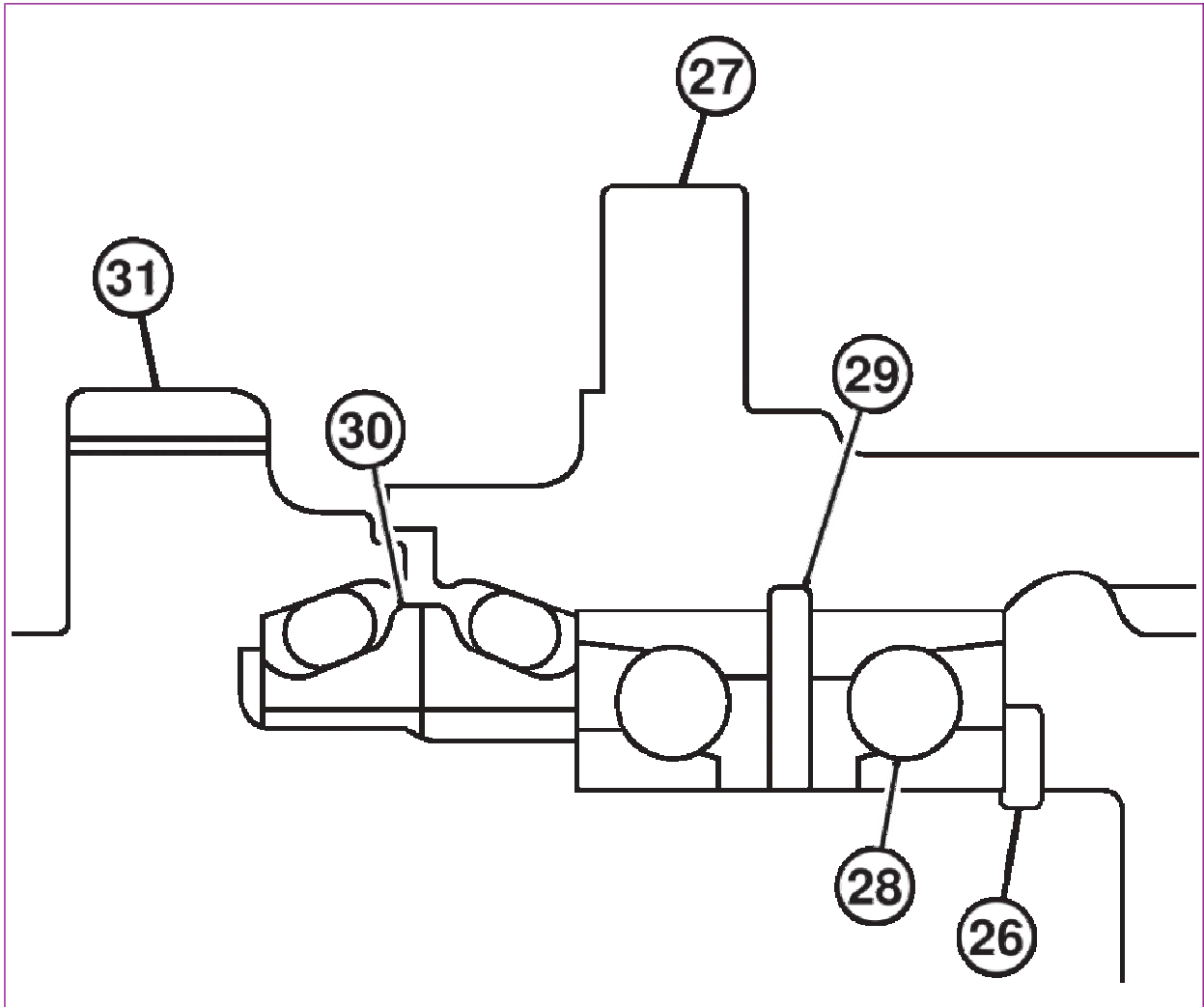
Remove second stage sun gear (13), snap rings (20), thrust washers (21 and 25), second stage planetary gears (22), needle bearings (23), and bearing races (24).

13. **NOTE:**

Further disassembly is not necessary unless bearings (28) or metal face seal (30) require replacement. Bearings will be destroyed during removal; if removed, replace with new bearings.



TX1135954-UN: Ring Gear Removal



TX1135945-UN: Travel Gear Case Bearings and Metal Face Seal

LEGEND:

- 26 - Snap Ring
- 27 - Ring Gear
- 28 - Bearing (2 used)
- 29 - Snap Ring
- 30 - Metal Face Seal
- 31 - Travel Motor Housing and Second Stage Planetary Carrier
- 33 - Clamp (3 used)

Compress ring gear using clamps (33) so snap ring (26) can be removed. Remove snap ring (26).

14. Push travel motor housing and second stage planetary carrier out of ring gear using a shop press.

15. **IMPORTANT:**

Avoid damage to metal face seal (30). Seal must be kept together as a set because of wear patterns. Metal face seals can be reused if they are not worn or damaged.

NOTE:

Keep seal rings together as a matched set with a piece of clean cardboard between them to protect the seal ring face.

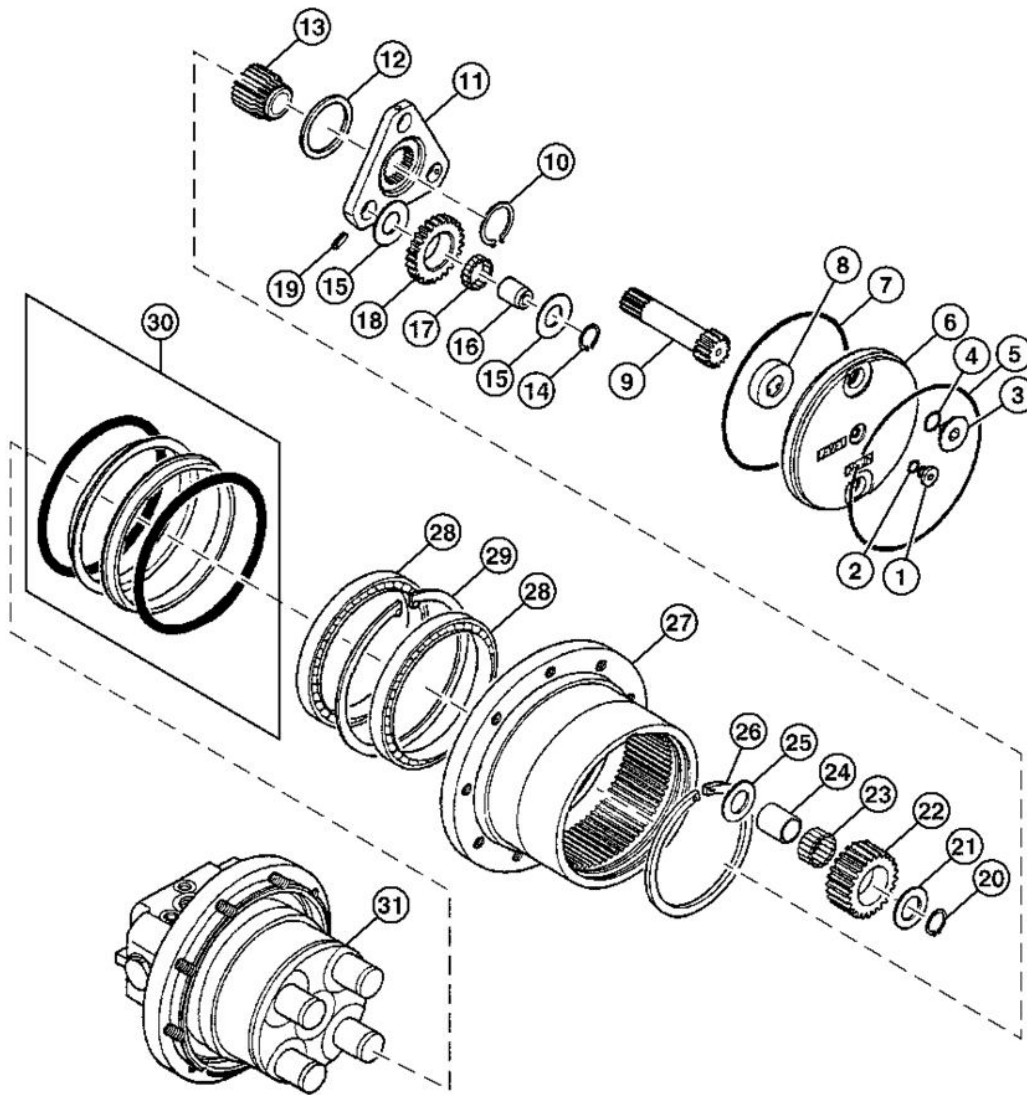
Remove metal face seal (30) from ring gear and travel motor housing and second stage planetary carrier.

To determine if seals can be reused, [see Inspect Metal Face Seals](#) . (Group 0130.)

16. Remove snap ring (29) and bearings (28) from ring gear for replacement only. Bearings are a pressed fit.

17. Repair or replace parts as necessary.

Assemble Travel Gear Case



TX1135944

TX1135944-UN: Travel Gear Case

LEGEND:

- 1 - Check Plug
- 2 - O-Ring
- 3 - Plug (2 used)
- 4 - O-Ring (2 used)
- 5 - Wire Retainer
- 6 - Cover
- 7 - O-Ring
- 8 - Thrust Ring
- 9 - Input Shaft and First Stage Sun Gear
- 10 - Snap Ring
- 11 - First Stage Planetary Carrier
- 12 - Thrust Washer
- 13 - Second Stage Sun Gear
- 14 - Snap Ring (3 used)
- 15 - Thrust Washer (6 used)
- 16 - Bearing Pin (3 used)
- 17 - Needle Bearing (3 used)
- 18 - First Stage Planetary Gear (3 used)
- 19 - Spring Pin (3 used)
- 20 - Snap Ring (4 used)
- 21 - Thrust Washer (4 used)
- 22 - Second Stage Planetary Gear (4 used)
- 23 - Needle Bearing (4 used)
- 24 - Bearing Race (4 used)
- 25 - Thrust Washer (4 used)
- 26 - Snap Ring
- 27 - Ring Gear
- 28 - Bearing (2 used)
- 29 - Snap Ring
- 30 - Metal Face Seal
- 31 - Travel Motor Housing and Second Stage Planetary Carrier

1. **IMPORTANT:**

Prevent possible machine damage. Apply clean gear oil on to parts to prevent parts from seizing.

Thank you so much for reading.
Please click the “Buy Now!”
button below to download the
complete manual.



After you pay.

You can download the most
perfect and complete manual in
the world immediately.

Our support email:

ebooklibonline@outlook.com