

TM1939 - 80C Excavator Repair

Front Idler Remove and Install

Front Idler Remove and Install



T118321-UN: Remove Front Idler

LEGEND:

A - Front Idler

1. Disconnect track chain. [See Track Chain Remove and Install](#)
2.



CAUTION:

Heavy component; use a hoist.

Item	Measurement	Specification
Front Idler	Weight	52 kg approximate 115 lb approximate

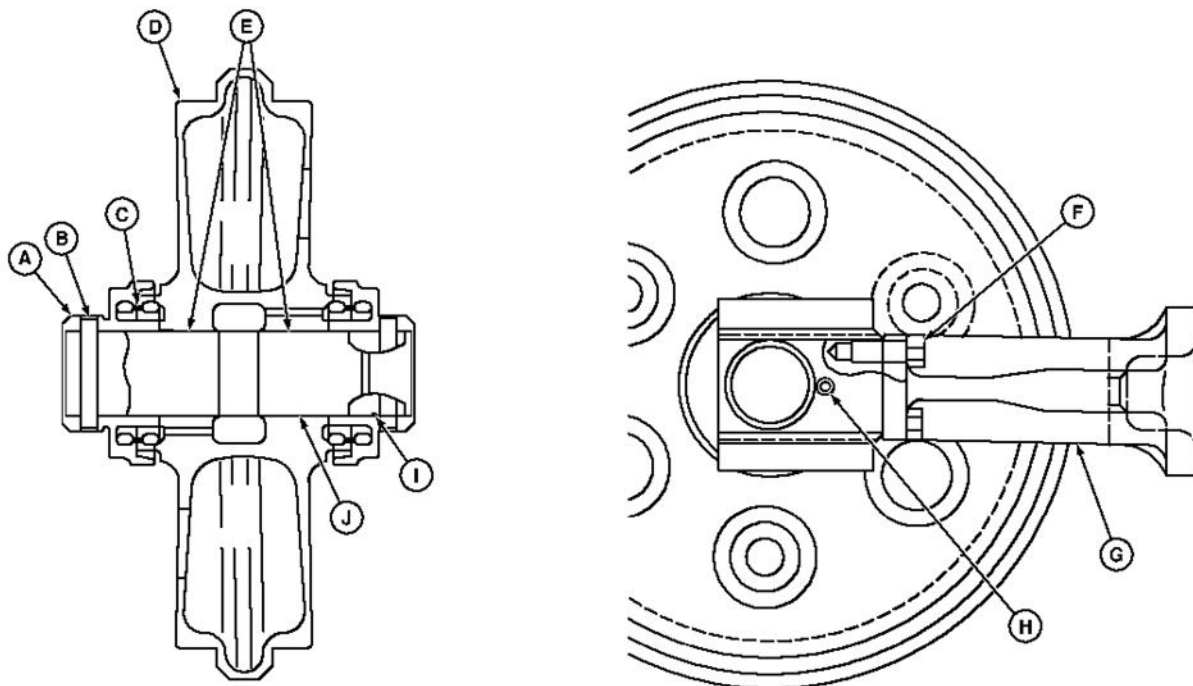
Slide front idler (A) forward using a pry bar.

3. Attach front idler to hoist. Remove from frame.
4. Measure front idler wear. [See 80C Front Idler Flange Height](#) . (SP326 Undercarriage Appraisal Manual.)
5. Repair or replace parts as necessary.
6. Install front idler and slide rearward into frame as far as possible.

TM1939 - 80C Excavator Repair

Front Idler Disassemble

Front Idler Disassemble



T117211

T117211-UN: Front Idler—Cross Section

LEGEND:

- A - Bracket (Bearing) (2 used)
- B - Pin (2 used)
- C - Metal Face Seal (2 used)
- D - Idler
- E - Bushing (2 used)
- F - Cap Screw (4 used)
- G - Yoke
- H - Plug (2 used)
- I - O-Ring (2 used)
- J - Axle

1. Remove cap screws (F). Remove yoke (G).
2. Remove drain plug (H). Drain oil.
3. **IMPORTANT:**

Metal face seals can be reused if they are not worn or damaged. A used seal must be kept together as a set because of wear patterns on seal ring face.

Remove pins (B), brackets (A), O-rings (I), and metal face seals (C).

4. [See Metal Face Seals Inspection](#) . (Group 0130.) Keep seal rings together as a matched set with seal ring faces together to protect surfaces.
5. Remove axle (J).
6. Inspect the bushing for scoring or excessive wear.
7. **NOTE:**

Remove bushings only if replacement is necessary.

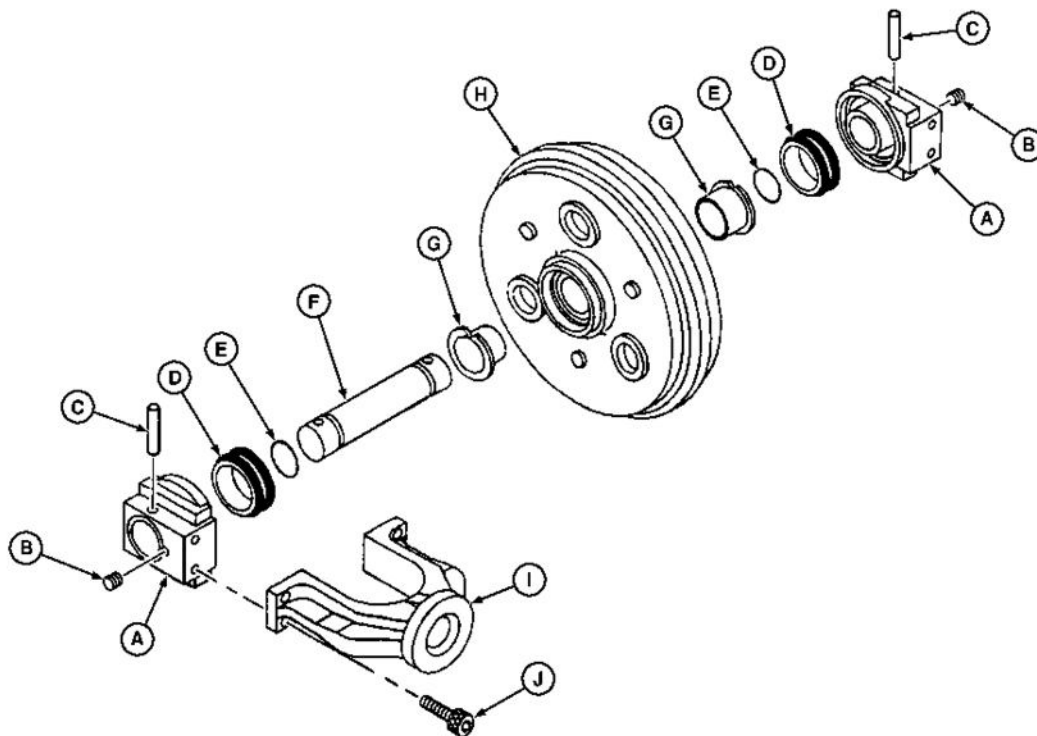
Remove bushing using a 2-jaw puller and adapters from 17-1/2 and 30-ton puller set.

8. Repair or replace parts as necessary.

TM1939 - 80C Excavator Repair

Front Idler Assemble

Front Idler Assemble



T117212

T117212-UN: Front Idler—Exploded View

LEGEND:

- A - Bracket (Bearing) (2 used)
- B - Plug (2 used)
- C - Pin (2 used)
- D - Metal Face Seal (2 used)
- E - O-Ring (2 used)
- F - Axle
- G - Bushing (2 used)
- H - Idler
- I - Yoke
- J - Cap Screw (4 used)

1. Apply a thin film of oil to bushings (G). Install bushings so flange is tight against shoulder of idler.
2. Install O-rings (E) on axle.
3. Apply a thin layer of NEVER-SEEZ® anti-seize lubricant or an equivalent to end of axle from O-ring to end of axle, and to bore in bracket (A).
4. Install axle into bracket.
5. Apply NEVER-SEEZ® anti-seize lubricant or an equivalent to pin (C). Install pin.
6. **IMPORTANT:**
O-rings and seat surfaces for O-rings must be clean, dry, and oil free, so O-rings do not slip when idler is turning.
Thoroughly clean the O-rings and seat surfaces in idler, bracket, and seal rings using volatile, non-petroleum base solvent and lint-free tissues.
7. Install O-ring on seal rings.
8. Install seals in bracket and idler. Apply equal pressure with fingers at four equally spaced points on seal face. Seal must "pop" down into place so O-ring is tight against seal bore.
9. **NOTE:**
A volatile non-petroleum base solvent or talcum powder may be used as a lubricant.
Wipe finger prints and foreign material off seal ring face using clean oil and lint-free tissues. Apply a thin film of oil to each seal ring face.
10. Install axle into idler.
11. Repeat procedure for other side of idler.
12. Fill front idler with oil.

Item	Measurement	Specification
Front Idler	Capacity	140 mL 4.7 oz

[See Track Roller, Front Idler, and Carrier Roller Oil](#) . (Group 0130.)

13. Clean threads of drain plug (B). Apply cure primer.

14. Apply pipe sealant and install plug.

Item	Measurement	Specification
Idler Bearing Drain Plug	Torque	20 N·m 177 lb-in.

15. Install yoke (I). Tighten cap screws (J).

Item	Measurement	Specification
Yoke-to-Bracket Cap Screw	Torque	175 N·m 130 lb-ft

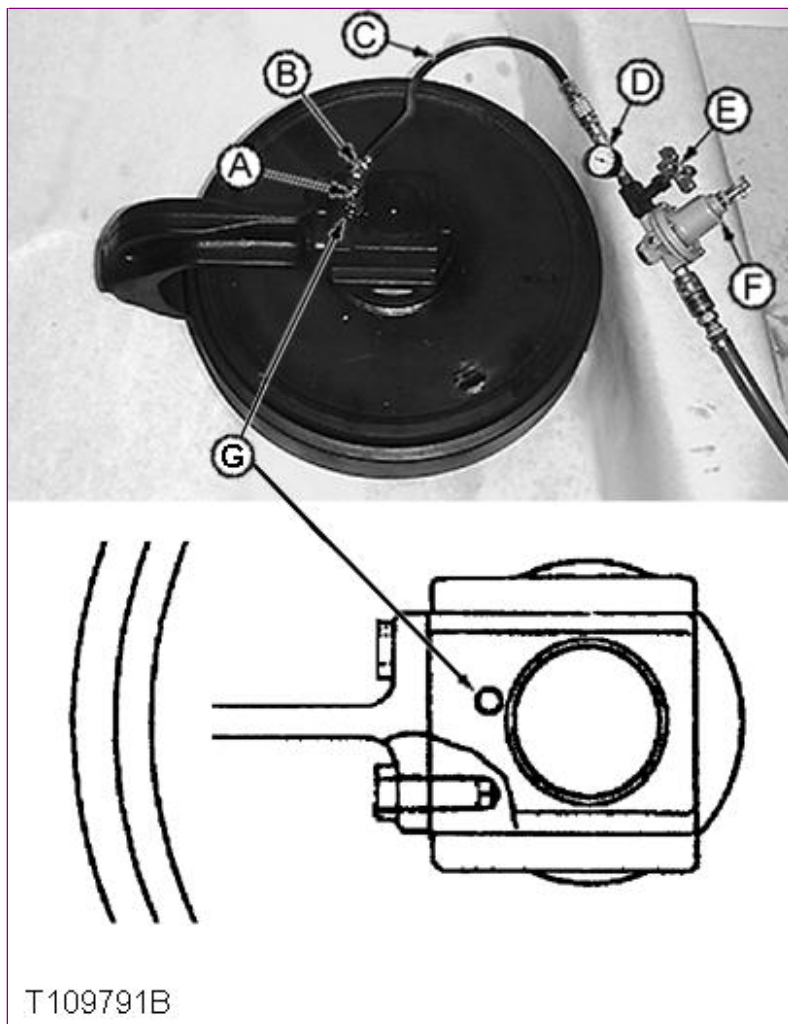
NEVER-SEEZ is a trademark of Emhart Chemical Group.
LOCTITE is a trademark of Loctite Corp.

FR91424,00000AB-19-20030310

TM1939 - 80C Excavator Repair

Front Idler Oil Leakage Test

Front Idler Oil Leakage Test



T109791B-UN: Test Front Idler for Oil Leakage

LEGEND:

- A - Plug, Adapter and Connector
- B - Connector 1/8 M NPT x 7/16-20 M 37°
- C - Hose
- D - Pressure Gauge
- E - Snubber (Needle) Valve
- F - Air Pressure Regulator
- G - Drain Plug

1. Turn shaft several turns to seat metal face seals.
2. Remove plug (G).
3. Install parts (A—F) as shown. Plug, barbed adapter, and connector are from a leak detector kit such as the D05361ST Rubber Stopper/Leak Detector Kit.
4. Holding plug so it is not pushed out, slowly pressurize oil cavity using air.

Item

Measurement

Specification

Thank you so much for reading.
Please click the “Buy Now!”
button below to download the
complete manual.



After you pay.

You can download the most
perfect and complete manual in
the world immediately.

Our support email:

ebooklibonline@outlook.com