

| | | | |
|---|-------------------------------|---|---------------------------|
| Document Title: Component locations | Function Group: 200 | Information Type: Service Information | Date: 2014/3/27 |
| Profile: WLO, L70G [GB] | | | |

Component locations

Engine, component positions

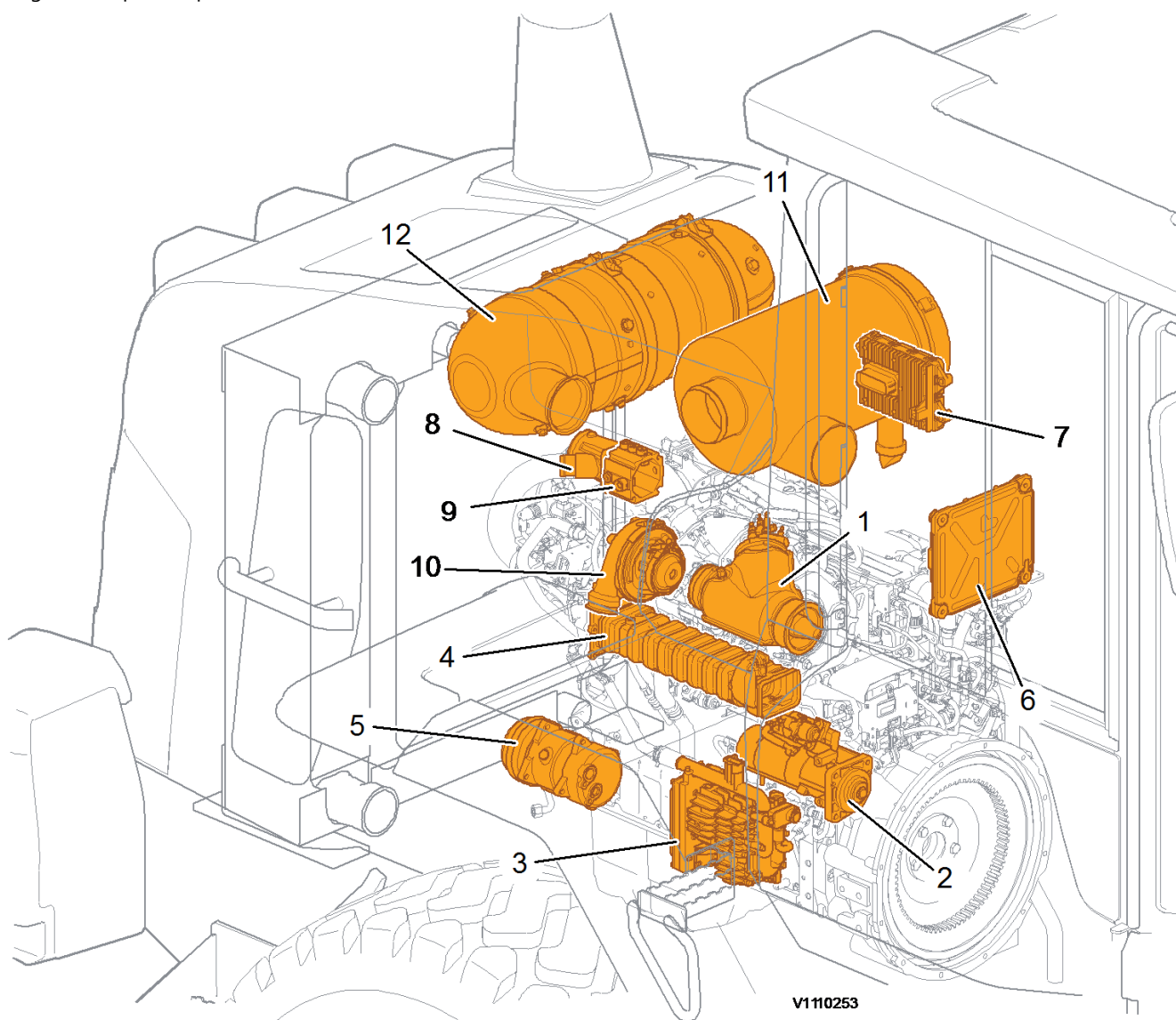
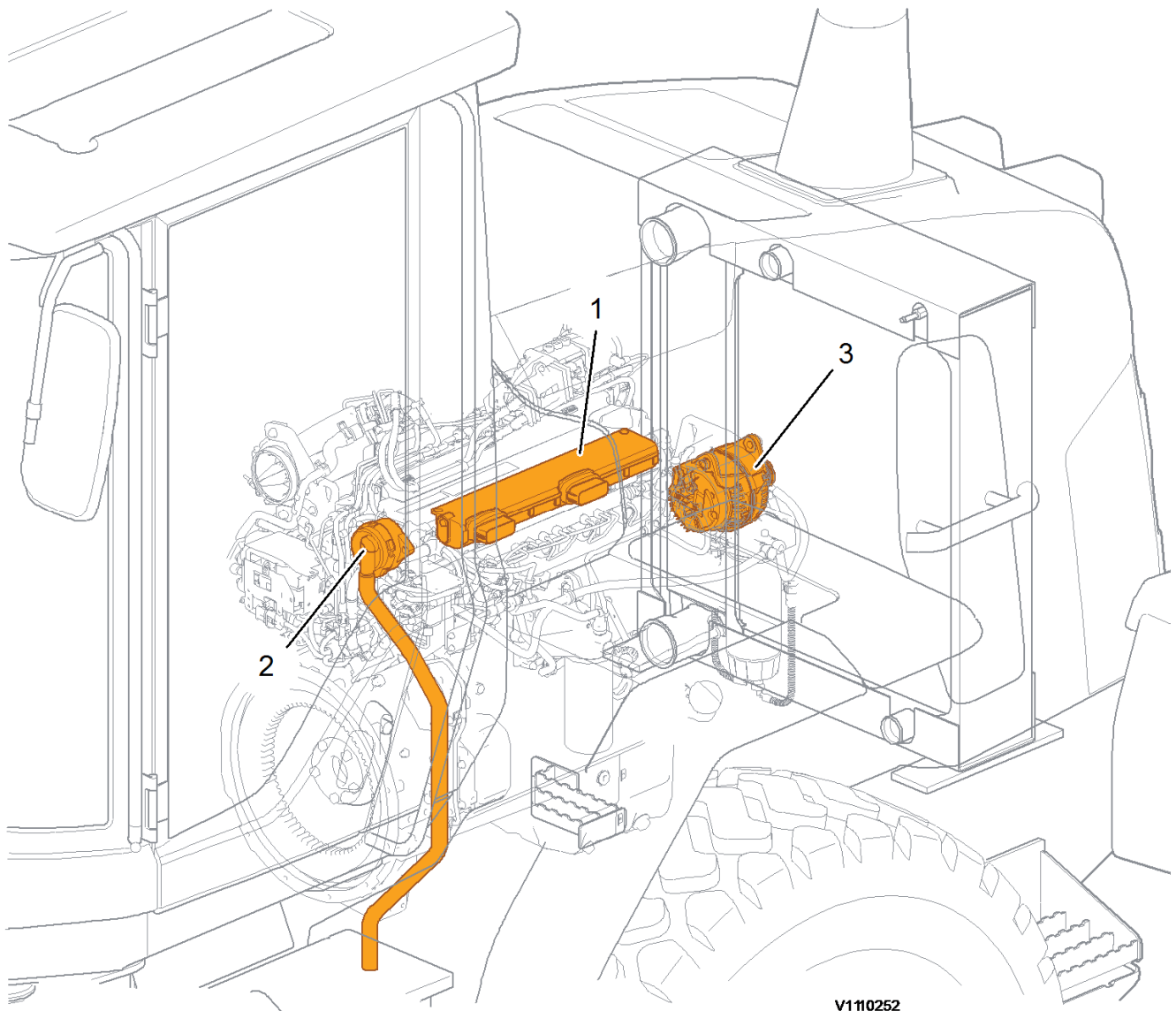


Figure 1

1. Burner
2. Starter motor
3. Air pump
4. EGR-cooler
5. AC compressor
6. E-ECU
7. ACM
8. Mixing chamber

9. Preheater
10. Turbocharger
11. Air cleaner
12. Muffler



V1110252

Figure 2

1. Electrical connections, grouping point
2. Crankcase ventilation, separator
3. Alternator

| | | | |
|---|-------------------------------|---|---------------------------|
| Document Title: VCADS Pro, Operations | Function Group: 200 | Information Type: Service Information | Date: 2014/3/27 |
| Profile: WLO, L60G, L70G, L90G [GB] | | | |

VCADS Pro, Operations

The following VCADS Pro operations are available for function group 2. Operations used when changing or working on components are mandatory.

Tests

| Operation | Application |
|--|---|
| 21006-3 Cylinder compression, test | Used when there is a suspicion of fault and/or at abnormal values/readings. This test indicates if there is any deviation in compression in any cylinder in relation to the other cylinders. As a first check this operation is both easy and fast to perform instead of a real compression test. |
| 23017-3 Feed pressure, inspection | Used when there is a suspicion of fault and/or at abnormal values/readings. |
| 23712-3 Injectors shut off, manual | Used when there is a suspicion of fault and/or at abnormal values/readings. |
| 25410-3 Air pump exhaust aftertreatment, test | Used when there is a suspicion of fault and/or at abnormal values/readings. |
| 25411-3 Burner exhaust aftertreatment, test | Used when there is a suspicion of fault and/or at abnormal values/readings. |
| 25412-3 Components ASU, test | With this sub-test, the functions of the atomiser air valve, the main air valve, the fuel shut-off valve and the fuel pump are checked. |
| 25457-3 Diesel Particulate Filter Service Regeneration | Used when the soot load is over 1.7. See 254 Exhaust Aftertreatment System, description Before starting service regeneration check the differential pressure over the diesel particle filter so that it is within stated value according to the service information. This is to make sure that the DPF won't get damaged by the service regeneration. After the service regeneration and when the exhaust temperature has stabilized to a normal level check the differential pressure over the DPF again so that it is within stated value according to the service information. This is to determine that the filter has been regenerated correctly and that it is not clogged with ash. |
| 26385-3 Reversible cooling fan, test | When there is a suspicion of fault and/or at abnormal values/readings. |
| 27102-3 Accelerator pedal, test | At abnormal values/readings. |
| 28407-3 Sensor values, monitoring | When there is a suspicion of fault and/or at abnormal values/readings. |
| 28420-3 Flywheel and camshaft signal, test | Used when there is suspicious of faulty signals or faulty connected sensor. |
| 29332-3 Exhaust gas circulation, function test | Used when there is a suspicion of fault and/or at abnormal values/readings. |

Programming

| Operation | Application |
|---|--|
| 25801-3 MID 233 Control unit, programming | When changing ACM or only reprogramming. See 254 ACM, replacing, non-programmed |
| 28423-3 MID 128 ECU, programming | When changing ECU or only reprogramming. See 200 E-ECU, MID 128, changing non-programmed ECU |

| | | | |
|---|-------------------------------|---|---------------------------|
| Document Title: Engine belts, replacing | Function Group: 200 | Information Type: Service Information | Date: 2014/3/27 |
| Profile: WLO, L70G [GB] | | | |

Engine belts, replacing

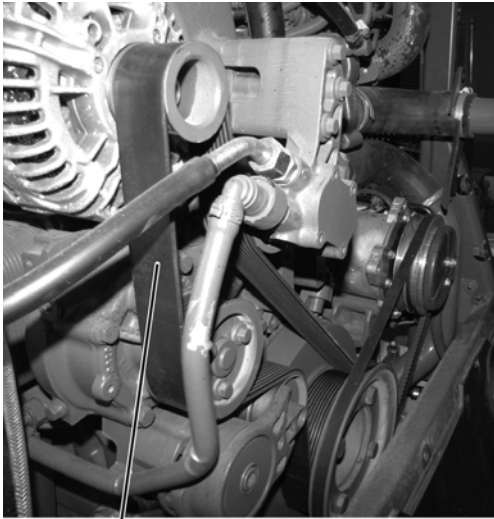
Op nbr 200-200

1. Place the machine in service position according to [191 Service position](#).
2. Open the engine hood.
3. Remove the plastic protection (24 screws).



Figure 1

1. Plastic protection
4. Remove the AC-belt (3 screws).

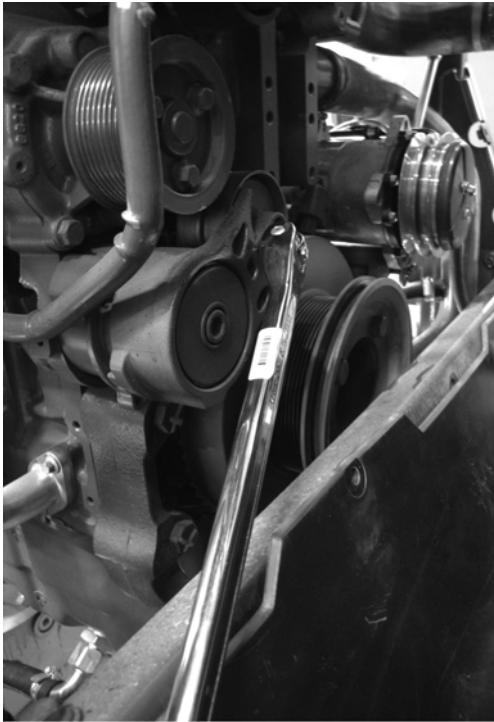


1

V1110572

Figure 2

1. Alternator belt

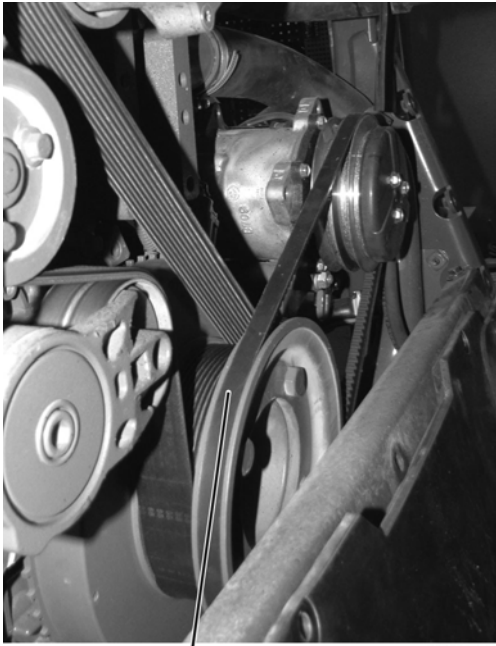


V1110582

Figure 3

Loosen the tensioning pulley and remove the belts.

5. Remove the alternator belt.



1

V1110573

Figure 4

1. AC-belt
6. Install new alternator belt and AC-belt.
7. Install the plastic protection.
8. Restore the machine.

| | | | |
|--|-------------------------------|---|---------------------------|
| Document Title: Compression test | Function Group: 210 | Information Type: Service Information | Date: 2014/3/27 |
| Profile: WLO, L70G [GB] | | | |

Compression test

Op nbr 210-002

[885812 Timing tool](#)

[9988539 Pressure gauge](#)

[88800070 Spanner](#)

[88830197 Rotation tool](#)

[88830205 Adapter](#)

[88830206 Counterhold](#)

This operation also includes required tools and times for applicable parts of the following operations:

[214 Valves, adjusting](#)

NOTICE

Maintain greatest possible cleanliness when working on the fuel system.

1. Place the machine in service position 1, see: [191 Service position](#)

2. Open the engine hood.

3. **NOTICE**

Plug all pipes, hoses and connections when removing.

4. Unplug the connector and remove the hoses (2 pcs.) between the air cleaner and the turbo (3 clamps).

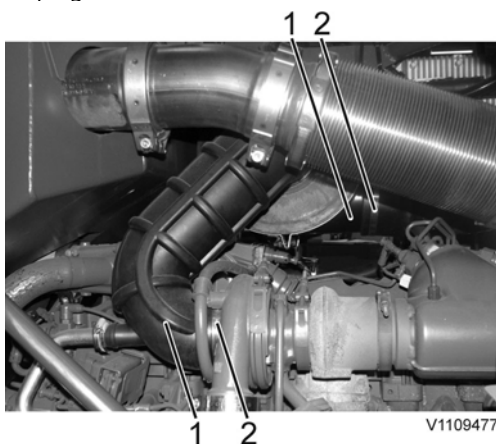


Figure 1

1. Hoses
2. Clamps

5. Remove the bracket for the air cleaner (2 clamps).
Remove the air cleaner.

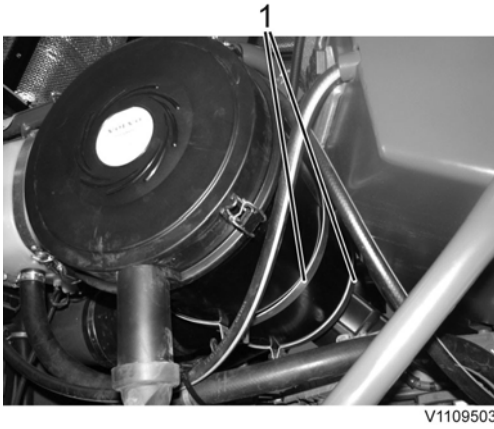


Figure 2

1. Clamps

6. Remove the dust cover between the valve cover and the inlet pipe. Unplug the connector and remove the control unit (3 screws).

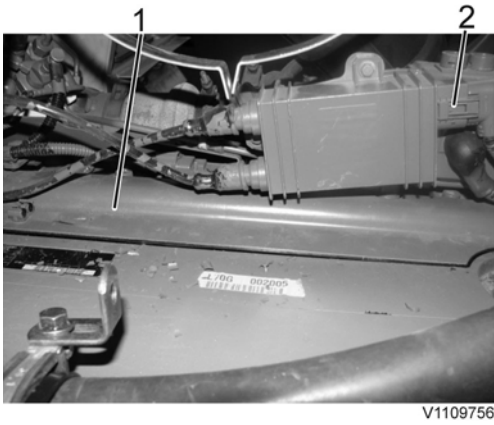


Figure 3

1. Dust cover
2. Connector

7. Unplug the connectors (2 pcs.) Remove the screws (2 pcs.) for the cable holder. Place the cable holder in appropriate work position.

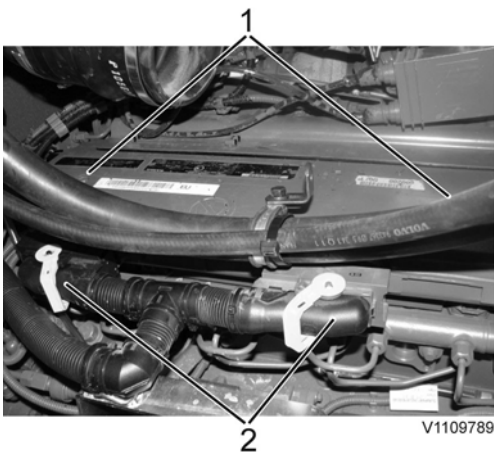


Figure 4

Buy Now



Our support email:

ebooklibonline@outlook.com