



# Contents

	Page
SAFETY . . . . .	2-4
IDENTIFICATION VIEWS . . . . .	5
PREPARING THE TRACTOR . . . . .	6-9
PREPARING THE PLANTER . . . . .	10-15
ATTACHING AND DETACHING . . . . .	16-20
TRANSPORTING . . . . .	21-33
OPERATING THE PLANTER . . . . .	34-64
PLANTING RATES . . . . .	65-116
ATTACHMENTS . . . . .	117-159
LUBRICATION . . . . .	160-165
TROUBLESHOOTING . . . . .	166-179
SERVICE . . . . .	180-202
STORAGE . . . . .	203-204
CRIME PREVENTION TIPS . . . . .	205-206
ATTACHMENT ASSEMBLY . . . . .	207-286
SPECIFICATIONS . . . . .	287-291
INDEX . . . . .	292-294

# Safety

## OPERATE THE PLANTER SAFELY

If the planter must be in a raised position while working on or near it, be certain service locks are installed.

Never ride or permit others to ride on the drawbar of the tractor or on the planter.

B05;;13SA A 271184

## TRANSPORT SAFELY

When transporting the planter on a road or highway at night or during the day, use accessory lights and devices for adequate warning to operators of other vehicles. In this regard, check local governmental regulations. Various safety lights and devices are available from your John Deere dealer.

Use care when transporting across rough ground.

AP0; B05;;13SA B 090384

## LUBRICATE THE PLANTER SAFELY

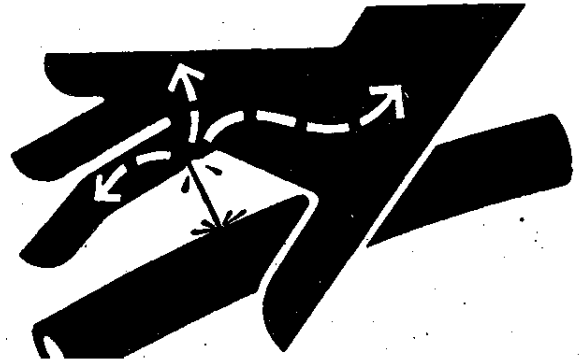
Do not grease, oil or adjust the planter while it is in motion.

AP0; B05;;13SA C 090384

### AVOID HIGH PRESSURE FLUIDS

Escaping fluid under pressure can penetrate the skin causing serious injury. Relieve pressure before disconnecting hydraulic or other lines. Tighten all connections before applying pressure. Keep hands and body away from pinholes and nozzles which eject fluids under high pressure. Use a piece of cardboard or paper to search for leaks. Do not use your hand.

If ANY fluid is injected into the skin, it must be surgically removed within a few hours by a doctor familiar with this type injury or gangrene may result.



AD0;X9811 B04;14SA H 050583

### HANDLE CHEMICALS PROPERLY

Agricultural chemicals can be dangerous. Improper selection or use can injure persons, animals, plants, soils or other property. BE SAFE: handle and apply with care. Follow instructions of the chemical manufacturer.

AP0; B05;13SA D 090384

### FREE DRY FERTILIZER AUGERS SAFELY

Do not use welding torch to free frozen dry fertilizer augers from auger shaft.

Fertilizers trapped inside augers could cause gas to form, which when heated, may cause augers to explode.

AP0; B05;13SA E 090384

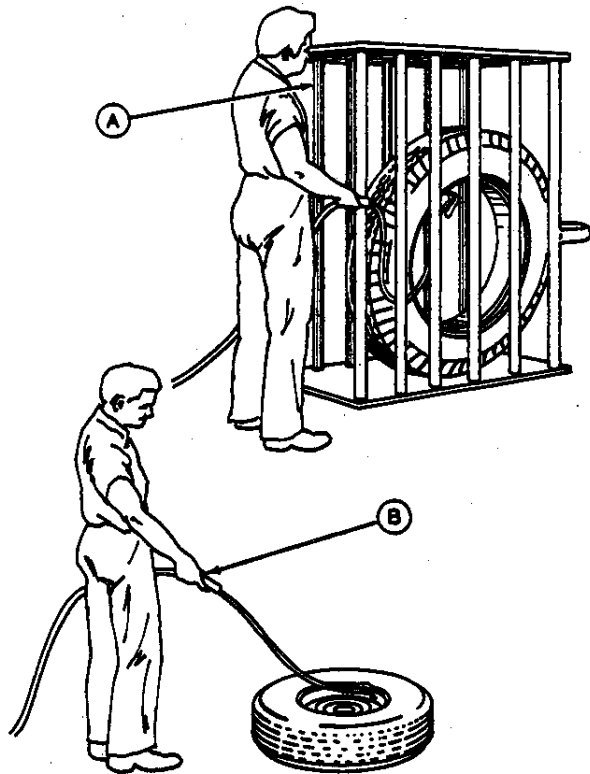
### SERVICE TIRES SAFELY

Failure to follow proper procedures when mounting a tire on a wheel or rim can produce an explosion which may result in serious injury or death. Do not attempt to mount a tire unless you have the proper equipment and experience to perform the job. Have it done by your John Deere dealer or a qualified tire repair service.

When sealing tire beads on rims, never exceed 35 psi (241 kPa) (2.4 bar) or maximum inflation pressures specified by tire manufacturers for mounting tires. Inflation beyond this maximum pressure may break the bead, or even the rim, with dangerous explosive force. If both beads are not seated when the maximum recommended pressure is reached, deflate, reposition tire, relubricate bead and reinflate.

Detailed tire mounting instructions, including necessary safety precautions, are contained in John Deere Fundamentals of Service (FOS) Manual 55, Tires and Tracks, available through your John Deere dealer. Such information is also available from the Rubber Manufacturers Association and from tire manufacturers.

- A—Use a safety cage if available.
- B—Do not stand over tire. Use a clip-on chuck and extension hose.

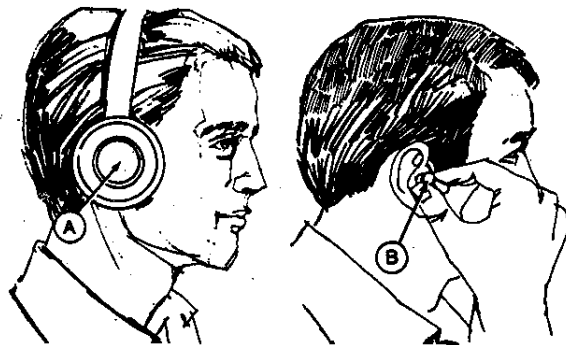


AD0;TS0123 B04;;14SA J 100583

### PROTECT AGAINST NOISE

Prolonged exposure to loud noise can cause impairment or loss of hearing.

Wear a suitable hearing protective device, such as earmuffs (A) or earplugs (B), to protect against objectionable or uncomfortable loud noises.



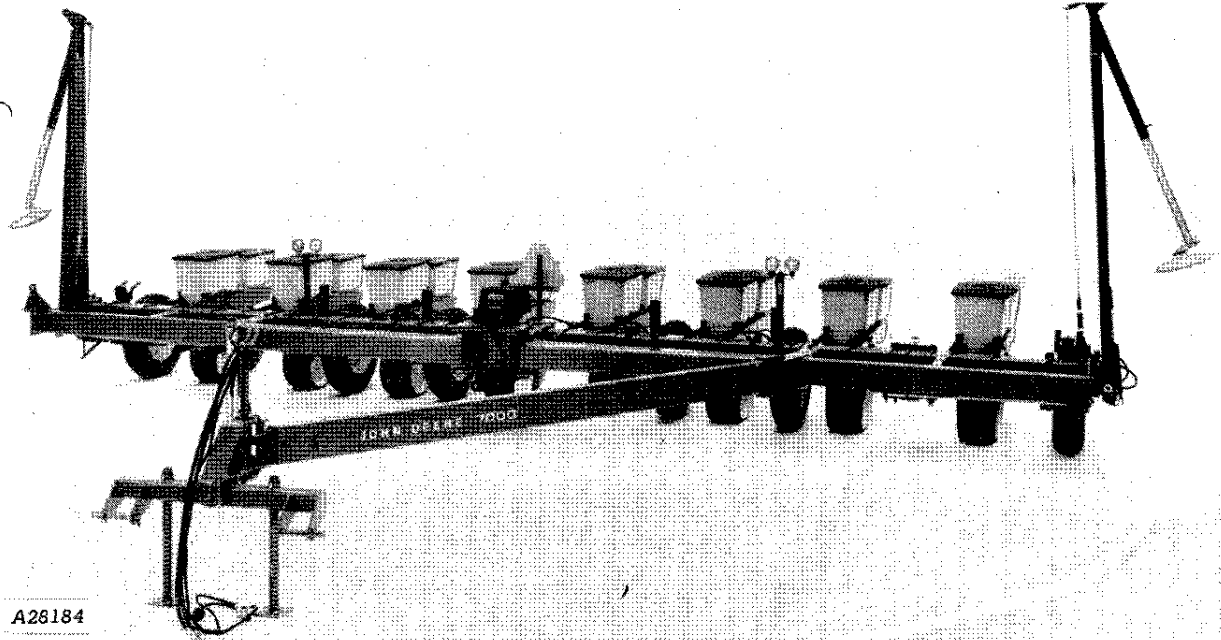
A00;X7662 B04;;14SA I 100583

### DO NOT MODIFY THE PLANTER

Unauthorized modifications to the machine may impair the function and/or safety and affect machine life.

AP0; B05;;13SA F 090384

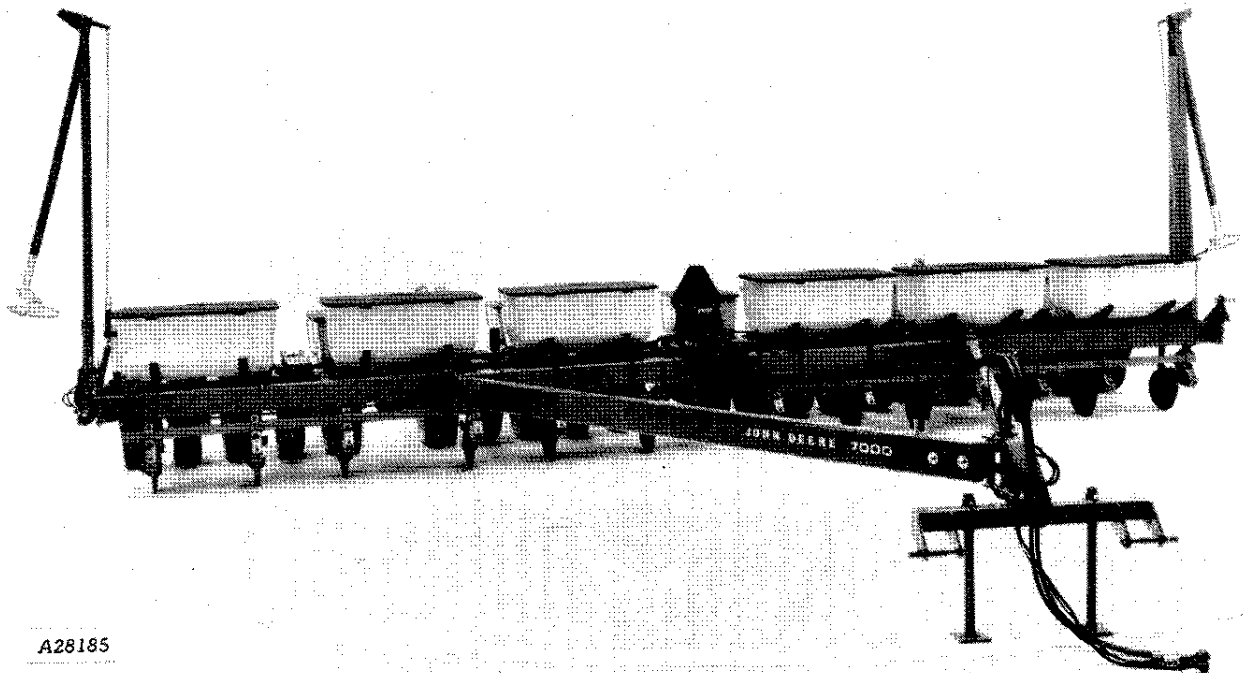
# Identification Views



A28184

*7000 Flex-Fold 8-Row Wide Drawn Max-Emerge Planter*

AP0;A28184 B05;;13ID A 160884



A28185

*7000 Flex-Fold 12-Row Narrow Drawn Max-Emerge Planter with Dry Fertilizer Attachment*

AP0;A28185 B05;;13ID B 160884

# Preparing the Tractor

## HYDRAULIC PRESSURE

**IMPORTANT:** The operating pressure of your tractor must be a minimum of 13 790 kPa (137.9 bar) (2000 psi) for the planter hydraulic system to function properly.

The maximum operating pressure for the planter hydraulic system is 15 513 kPa (155.1 bar) (2250 psi). Exceeding this pressure is not recommended.

For complete tractor operating instructions, refer to your tractor operator's manual.

AP0; 805;;13PT A 090384

## TIRE SIZE

The minimum tire size is 20.8-34 x 8 ply-rated for 4050 and 4250 tractors or tractors of comparable kW (hp) and 20.8-38 x 8 ply rated for 4450 tractors or tractors of comparable kW (hp).

AP0; 805;;13PT B 090384

## SETTING WHEEL TREAD

(Two-Wheel Drive Tractors) Set tires (center-to-center of tread) at twice the row spacing.

(Two-Wheel Drive Tractors with Dual Wheels) Set outer wheels as close as possible to four times the row spacing.

(Four-Wheel Drive Tractors) Set tractor tires (center-to-center of tread) as close as possible to twice the row spacing.

*NOTE: Certain tire combinations may require Category 3N quick-coupler to obtain 1524 mm (60 in.) wheel tread setting.*

AP0; B05;;13PT C 090384

## TIRE INFLATION

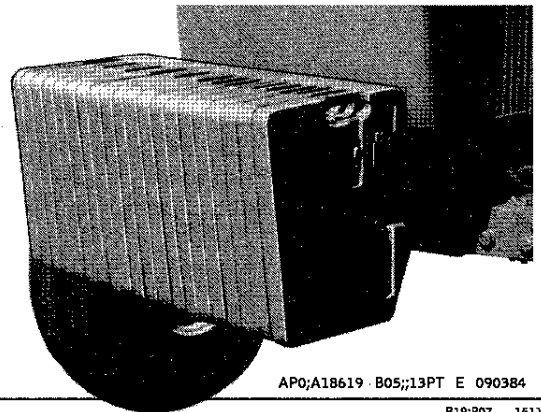
Inflate the tractor tires as recommended in the tractor operator's manual.

AP0; B05;;13PT D 090384

## FRONT END WEIGHTING



**CAUTION:** 4050 and 4250 tractors require the maximum front end weights available. The weight is required for front end stability in transport position. Avoid quick starts and use gentle shifts when going up hills in folded transport position to prevent front end from raising.



AP0;A18619 B05;;13PT E 090384



## Preparing the Tractor

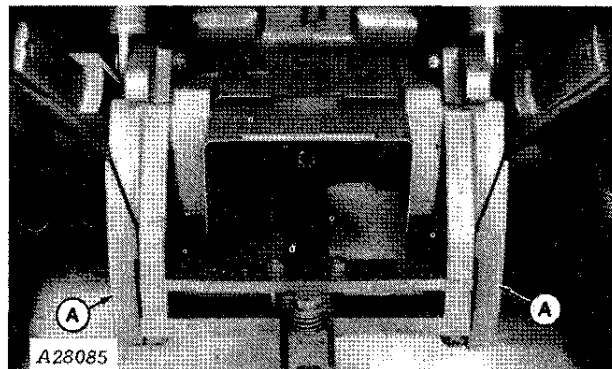
### REAR WHEEL WEIGHTING

Do not use liquid in or wheel weights on the rear tractor tires. This decreases the tire load carrying capacity which is needed to carry the planter when it is folded for transporting.

AP0; B05;;13PT F 090384

### SWAY BLOCKS

Set the sway blocks (A) in the down position to prevent side sway.

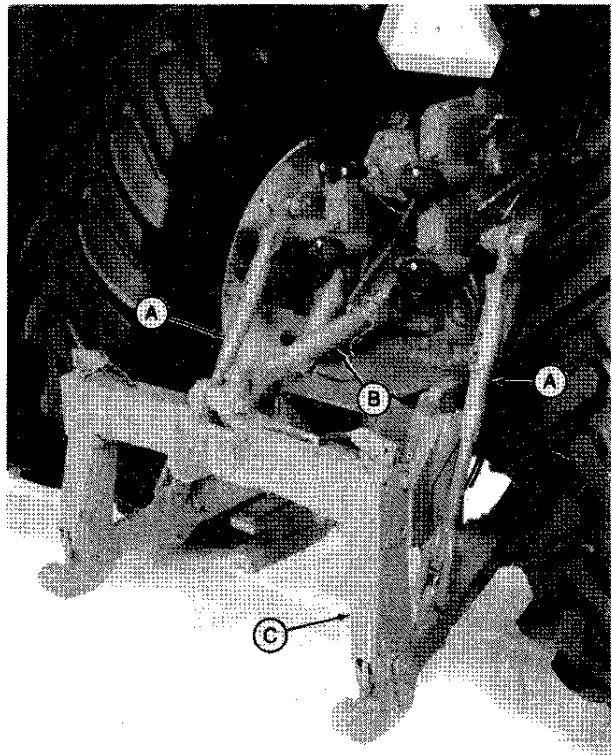


AP0;A28085 B05;;13PT G 090384

### LINK LENGTHS

Set the lift links (A) as short as possible to provide maximum transport clearance.

Adjust the center link (B) until the quick-coupler (C) is vertical when in planting position.

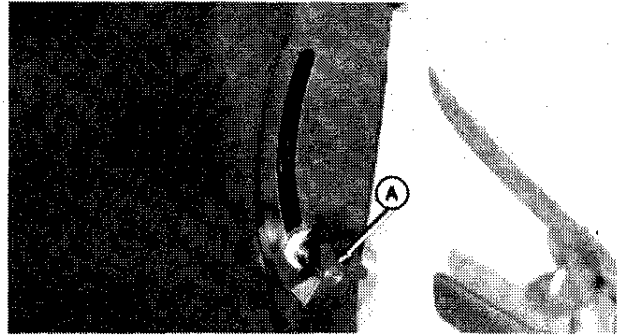


A28086

AP0;A28086 B05;;13PT H 090384

**ROCKSHAFT SELECTOR LEVER**

Set the rockshaft selector lever (A) in the "MIN" position to prevent unexpected hitch movement.



AG1;RW7128 B05;13PT I 261184

# Preparing the Planter

## TIRE INFLATION

Inflate tires to 331 kPa (3.3 bar) (48 psi) air pressure.

AP0; B05;;13PI A 090384

## LUBRICATION

Be sure your planter has been properly lubricated. See Lubrication Section.

AP0; B05;;13PI B 090384

### **SELECTING SEED PLATES (PLATE SEED METERS ONLY)**

As growing conditions change from year to year, the size of the seed may vary. Therefore, different seed plates may be required to plant the same variety of seed from year to year.

There are two ways to select seed plates. One is to follow the recommendation of the seed supplier and the other is to take a sample of the seed to be planted to a John Deere dealer and let him recommend the seed plates.

In either case, the accuracy of the seed plate selected should be checked when installed in your planter and operated at the planting speed you intend to travel. The best check is to plant a short distance at the desired planting speed and then stop to dig up the seeds to determine the actual planting rate.

For a given spacing and travel speed, a 24-cell seed plate revolves slower than a 16-cell seed plate, resulting in better cell fill. It is, therefore, recommended that a 24-cell seed plate be used in all cases when available.

*NOTE: See pages 86-91 for drilling distance conversion charts for 16-, 20-, and 24-cell seed plates.*

AP0; B05;;13PI C 261184

Thank you so much for reading.  
Please click the “Buy Now!”  
button below to download the  
complete manual.



After you pay.

You can download the most  
perfect and complete manual in  
the world immediately.

Our support email:

[ebooklibonline@outlook.com](mailto:ebooklibonline@outlook.com)