

JOHN DEERE
WORLDWIDE COMMERCIAL & CONSUMER
EQUIPMENT DIVISION

Utility All Terrain Vehicle (UATV)
Buck 500 Auto

OMC219000362 F4

OPERATOR'S MANUAL



JOHN DEERE

⚠ WARNING: The Engine Exhaust from this product contains chemicals known to the State of California to cause cancer, birth defects or other reproductive harm.

California Proposition 65 Warning

North American Version
Litho in U.S.A.

INTRODUCTION

Thank You for Purchasing a John Deere Product

We appreciate having you as a customer and wish you many years of safe and satisfied use of your machine.

Using Your Operator's Manual

This manual is an important part of your machine and should remain with the machine when you sell it.

Reading your operator's manual will help you and others avoid personal injury or damage to the machine. Information given in this manual will provide the operator with the safest and most effective use of the machine. Knowing how to operate this machine safely and correctly will allow you to train others who may operate this machine.

If you have an attachment, use the safety and operating information in the attachment operator's manual along with the machine operator's manual to operate the attachment safely and correctly.

This manual and safety signs on your machine may also be available in other languages (see your authorized dealer to order).

Sections in your operator's manual are placed in a specific order to help you understand all the safety messages and learn the controls so you can operate this machine safely. You can also use this manual to answer any specific operating or servicing questions. A convenient index located at the end of this book, will help you to find needed information quickly.

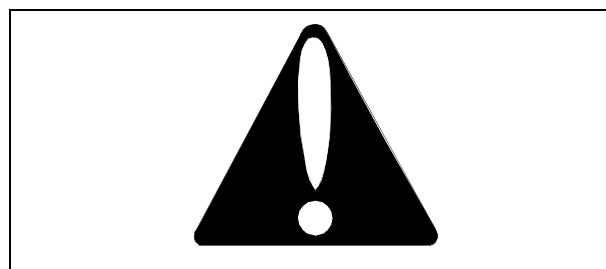
The machine shown in this manual may differ slightly from your machine, but will be similar enough to help you understand our instructions.

RIGHT-HAND and LEFT-HAND sides are determined by facing in the direction the machine will travel when going forward. When you see a broken line arrow (-----), the item referred to is hidden from view.

Before delivering this machine, your dealer performed a predelivery inspection to ensure best performance.

Special Messages

Your manual contains special messages to bring attention to potential safety concerns, machine damage as well as helpful operating and servicing information. Please read all the information carefully to avoid injury and machine damage.



Safety-Alert Symbol

The Safety Alert Symbol indicates a potential injury hazard. The operator's manual also explains any potential safety hazards, which if not avoided could result in serious injury or death. These special safety messages are identified with the word, WARNING, and the safety-alert symbol.



Indicates a potentially hazardous situation which, if not avoided, could result in serious injury or death.

IMPORTANT: Avoid damage! Denotes an instruction which, if not followed, may damage the UATV and/or components.

NOTE: General information is given throughout the manual that may help the operator in the operation or service of the machine.



YOUR ATV CAN BE HAZARDOUS TO OPERATE. A collision or rollover can occur quickly, even during routine maneuvers such as turning and driving on hills or over obstacles, if you fail to take proper precautions.

For your safety, understand and follow all the warnings contained in this Operator's Guide and the labels on your vehicle. Failure to follow these warnings can result in SEVERE INJURY OR DEATH.

Keep this Operator's Guide with the vehicle at all times

Disregarding any of the safety precautions and instructions contained in this Operator's Manual, Safety Videocassette and on-product labels could cause injury including the possibility of death!

Introduction

Your dealer should have provided you with some basic information on the particular controls and features of your

INTRODUCTION

new UATV. Please take the time to study this Operator's Manual and all on-product warning labels as well as the Safety Videocassette that came with the UATV. It more completely describes what you should know about the UATV before riding it.

Whether you are a new user or an experienced rider, it is important for your personal safety that you know the controls and features of the UATV. Equally important is knowing how to properly ride.

Regardless of your age, experience or state regulations, it is safer for you or any other person who may ride your UATV, to take an approved ATV safe riding course. Please check with your dealer or the ATV Safety Institute (ASI) at 1-800-887-2887 for availability in your area. If you have never operated a UATV, this should be done before your first ride. Your UATV instructor should be able to provide advice on local conditions and safe riding practices particular to the area.

Riding conditions vary from place to place. Each is subject to weather conditions which may radically change from time to time and from season to season. Riding on sand is different than riding on snow or through forests or marshes. Each location may require a greater degree of awareness and skill. Always proceed with caution. Please do not take any unnecessary risks that could leave you stranded or possibly injured.

The contents of this Operator's Manual provide riding information which has been proven reliable by other UATV users. They are not intended as a definitive means of avoiding accidents. How you apply this information, coupled with your mental and physical condition, the particular terrain hazard and your risk acceptance level will have an effect on your riding experience. Have fun... and ride responsibly.

This Operator's Manual has been prepared to acquaint the owner/operator of a new vehicle with the various vehicle controls, maintenance and safe operating instructions. It is indispensable for the proper use of the product.

FOREWORD

Congratulations on your purchase of a new John Deere® utility all-terrain vehicle (UATV). It is backed by the John Deere warranty and a network of authorized John Deere UATV dealers ready to provide the parts, service or accessories you may require.

Your dealer is committed to your satisfaction. He has taken training to perform the initial set-up and inspection of your vehicle as well as completed the final adjustment before you took possession. At delivery, your dealer would have explained the operation, maintenance and safety features of the vehicle. We trust you have taken full advantage of

this! If you need more complete servicing information, please ask your dealer.

You are invited to contact our customer assistance center should you experience problems which cannot be resolved by an authorized John Deere UATV dealer. See the John Deere Quality Statement at the end of this manual for information on contacting us.

It is understood that this guide may be translated into another language. In the event of any discrepancy, the English version shall prevail. Throughout this document, the masculine is used to denote the masculine and feminine.

The information and components/ system descriptions contained in this document are correct at the time of publication. John Deere, however, maintains a policy of continuous improvement of its products without imposing upon itself any obligation to install them on products previously manufactured. Due to late changes, some differences between the manufactured product and the descriptions and/or specifications in this Operator's Manual may occur. John Deere reserves the right at any time to discontinue or change specifications, designs, features, models or equipment without incurring any obligation upon itself.

The illustrations in this document show the typical construction of the different assemblies and may not reproduce the full detail or exact shape of the parts. However, they represent parts that have the same or similar function.

The use of RIGHT and LEFT indications in the text always refers to driving position (when sitting on vehicle).

Specifications are given in the SI metric system with the SAE U.S. equivalent in parenthesis. Where precise accuracy is not required, some conversions are rounded off for easier use.

We recommend genuine John Deere products for replacement parts and accessories. They've been especially designed for your vehicle and manufactured to meet John Deere's demanding standards.

A Technical Manual can be obtained for complete service and maintenance information and more repair information.

PRODUCT IDENTIFICATION

How To Identify Your UATV

The main components of your vehicle (engine and frame) are identified by different serial numbers. It may sometimes become necessary to locate these numbers for warranty purposes or to trace your vehicle in the event of loss. These numbers are required by the authorized John Deere UATV dealer to complete warranty claims properly. No warranty will be allowed by John Deere if the engine identification number (EIN) or vehicle identification number (VIN) is removed or mutilated in any way. We strongly recommend that you take note of all the serial numbers on your vehicle and supply them to your insurance company.

Record Identification Numbers

Utility All Terrain Vehicle:

Buck Auto PIN (020001 -)

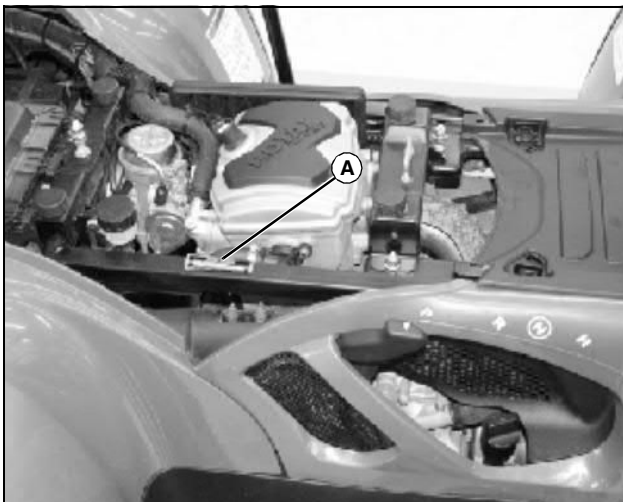
If you need to contact an Authorized Service Center for information on servicing, always provide the product model and identification numbers.

You will need to locate the model and serial number for the machine and for the engine of your machine and record the information in the spaces provided below.

DATE OF PURCHASE:

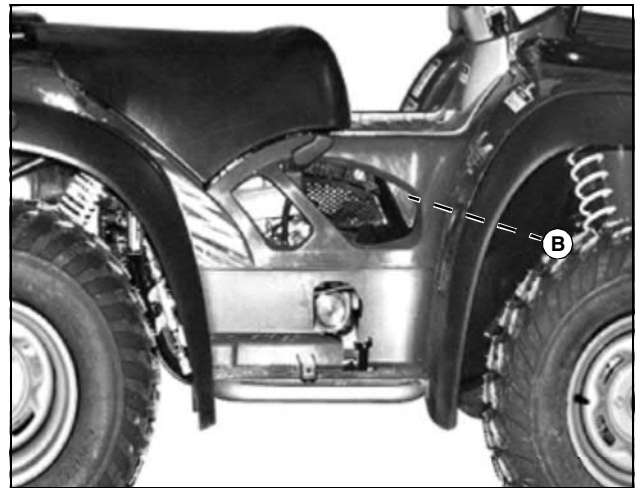
DEALER NAME:

DEALER PHONE:



MX33003

PRODUCT IDENTIFICATION NUMBER (A):



MX30925

ENGINE IDENTIFICATION NUMBER (B):



MX33004

VEHICLE IDENTIFICATION NUMBER (C):

TABLE OF CONTENTS

Safety	1
Operating	27
Service Intervals	49
Service Lubrication	52
Service Engine	55
Service Brakes	62
Service Electrical	63
Service Miscellaneous	67
Troubleshooting	71
Specifications	75
Warranty	79
Index	80

All information, illustrations and specifications in this manual are based on the latest information at the time of publication. The right is reserved to make changes at any time without notice.

COPYRIGHT© 2004
Deere & Co.
John Deere Worldwide Commercial and
Consumer Equipment Division
All rights reserved
Previous Editions
COPYRIGHT©

OMC219000362 F4 - English

Thank you so much for reading.
Please click the “Buy Now!”
button below to download the
complete manual.



After you pay.

You can download the most
perfect and complete manual in
the world immediately.

Our support email:

ebooklibonline@outlook.com