



346 Series Balers



JOHN DEERE

OPERATORS MANUAL

346 Series
Balers

OME53643 Issue E9 English

John Deere Ottumwa Works
OME53643 Issue E9

LITHO IN U.S.A.
ENGLISH






To the Purchaser

Your 346 Baler was carefully designed and manufactured to give years of dependable service. To keep it running efficiently, read the instructions in this operator's manual. Each section is clearly identified so you can easily find the information you need—whether it is operation, lubrication, or service. Read the Table of Contents to learn where each section is located. Use the alphabetical index for fast reference.

In addition to the equipment furnished with your baler, attachments are available to help you do a better job in special crop conditions. These are described in the attachments section of this manual and can be purchased from your John Deere dealer.

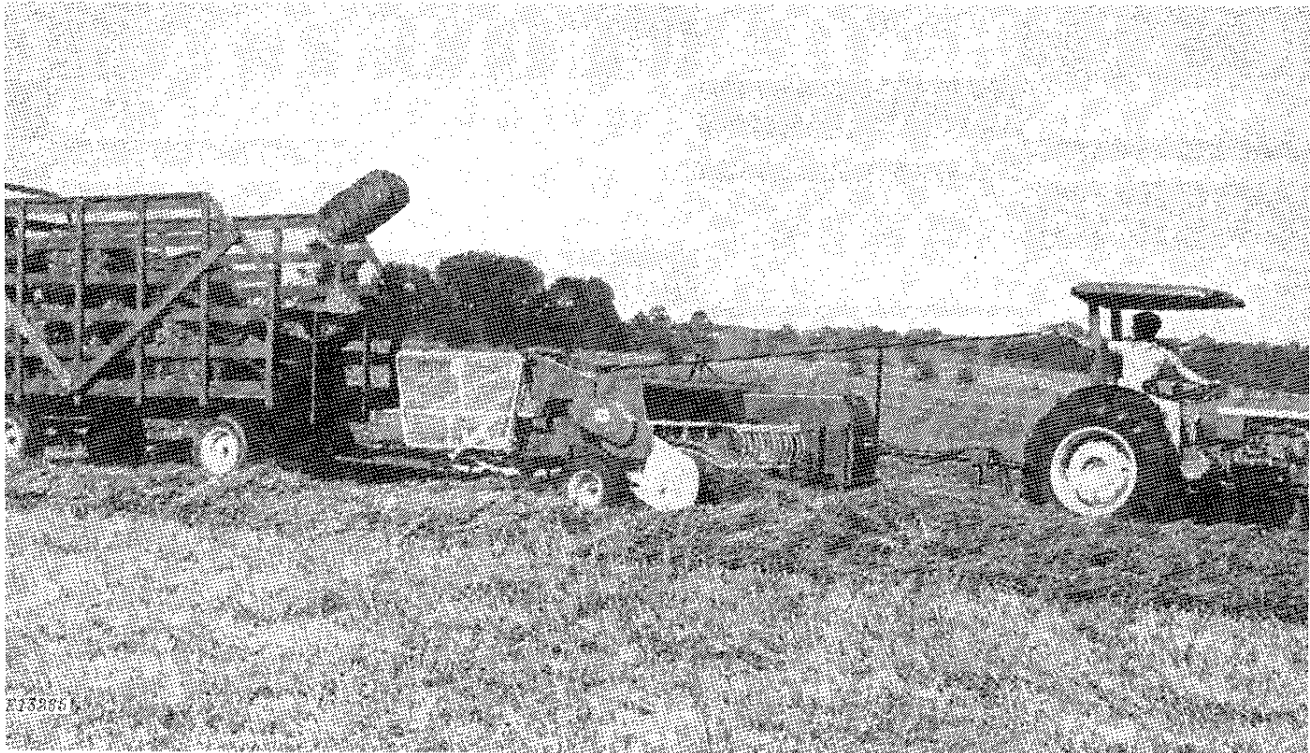
 This safety alert symbol identifies important safety messages in this manual. When you see this symbol, be alert to the possibility of personal injury and carefully read the message that follows.

Because John Deere sells its products world-wide, U.S. units of measure are shown with their respective Metric equivalents throughout this operator's manual. These equivalents are the SI (International System) Units of Measure.

“Right-hand” and “left-hand” sides are determined by facing in the direction the baler will travel when in use.

Record your baler serial number in the space provided on page 67. Your dealer needs this information to give you prompt, efficient service when you order parts. If your baler requires replacement parts, go to your John Deere dealer where you can obtain Genuine John Deere parts—accept no substitutes.

The warranty on this baler appears on your copy of the purchase order which you should have received from your dealer when you purchased the baler.





Contents

	Page
Safety Suggestions2
Identification Views3
Operation4
Storage16
Lubrication17
Service20
Trouble Shooting38
Attachments51
Assembly54
Specifications67
Index68



Safety Suggestions

⚠ The safety of the operator was one of the prime considerations in the minds of John Deere engineers when this baler was designed. Shielding, simple adjustments, and other safety features were built into the baler wherever possible.

You can make your farm a safer place to live and work if you observe the safety suggestions given. Study these suggestions carefully and insist that they be followed by those working with you and for you.

All machinery should be operated only by responsible persons who have been delegated to do so.

Before servicing or adjusting the baler, or removing bales or other material from it, or hitching wagon to baler, always:

1. disengage all power.
2. shut off engine, and then
3. **Wait until baler flywheel has stopped rotating.**

Inexperience and lack of "know-how" in repair and maintenance can result in personal injury as well as equipment damage. Know what to do and how to do it before attempting a job.

All rotating shields on PTO drive must turn freely.

Stand clear of baler at all times when machine is operating.

Do not attempt to pull hay from pickup when machine is running.

Be sure flywheel is not moved when working on knives.

To avoid bodily injury, keep all power drive system safety shields in place.

Do not use the chuck or forage wagon for loading or transporting bales.

Use extreme caution when tripping knotters by hand with the baler running. Do not touch knotter. Stand clear of needle frame.

Do not try to remove or pull twine or wire from bale case or knotter when machine is running.

Always shut off the engine before refueling.

Never clean, oil, or adjust the baler when it is running or until flywheel has stopped rotating once engine is shut off.

Provide a first-aid kit for use in case of accident. Use proper antiseptics on scratches and cuts without delay.

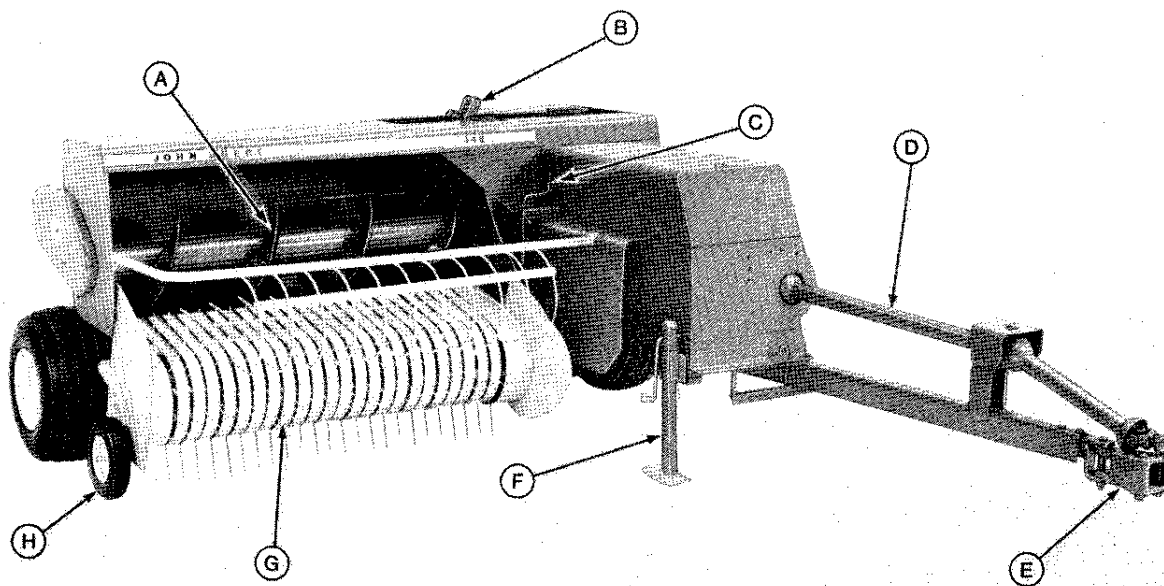
Be especially careful when operating on hillsides. The baler may tip sideways if it strikes a hole, ditch, or other irregularity.

Never ride, or permit others to ride, on the baler or the tractor while operating the baler.

Make sure everyone is clear of the baler before starting so they cannot be struck by moving parts or caught in a drive belt or chain.

When transporting the baler on a road or highway at night or during the day, use accessory lights and devices for adequate warning to the operators of other vehicles. In this regard check local governmental regulations. Various safety lights and devices are available from your John Deere dealer. Among these is the SMV (slow moving vehicle) emblem. A bracket is included with each emblem so that it can be attached vertically to the mounting on rear of the auger housing to provide proper light reflection.

Accidents are caused - so be alert and don't get hurt.



E14888

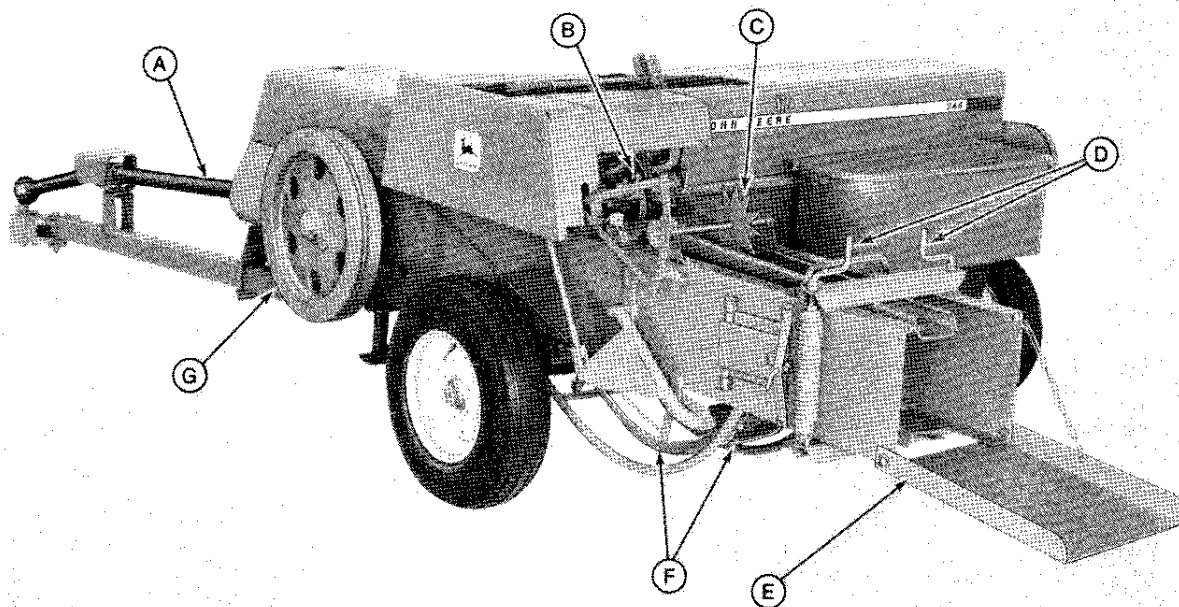
A—Auger
B—Feeder Fingers

C—Pickup Lift Crank
D—Powershaft

E—Equalizer Hitch
F—Jack Stand

G—Pickup
H—Pickup Gauge Wheel

Right Front View of John Deere 346 Baler



E14889

A—Powershaft
B—Knotters

C—Bale Measuring
Wheel

D—Tension Crank
E—Bale Chute

F—Needles
G—Flywheel

Left Rear View of John Deere 346 Baler

Thank you so much for reading.
Please click the “Buy Now!”
button below to download the
complete manual.



After you pay.

You can download the most
perfect and complete manual in
the world immediately.

Our support email:

ebooklibonline@outlook.com