

**6620  
SideHill 6620  
7720,  
and 8820  
Combines**



**JOHN DEERE**

**OPERATORS MANUAL**

6620 SideHill 6620 7720, and 8820  
Combines


OMH120048 Issue H4 English

**John Deere Harvester Works  
OMH120048 Issue H4**

LITHO IN U.S.A.  
ENGLISH



## INTRODUCTION

 This safety alert symbol identifies important safety messages in this manual. When you see this symbol, be alert to the possibility of personal injury and carefully read the message that follows.

Your operator's manual contains SI metric equivalents which follow immediately after the U.S. customary units of measure.

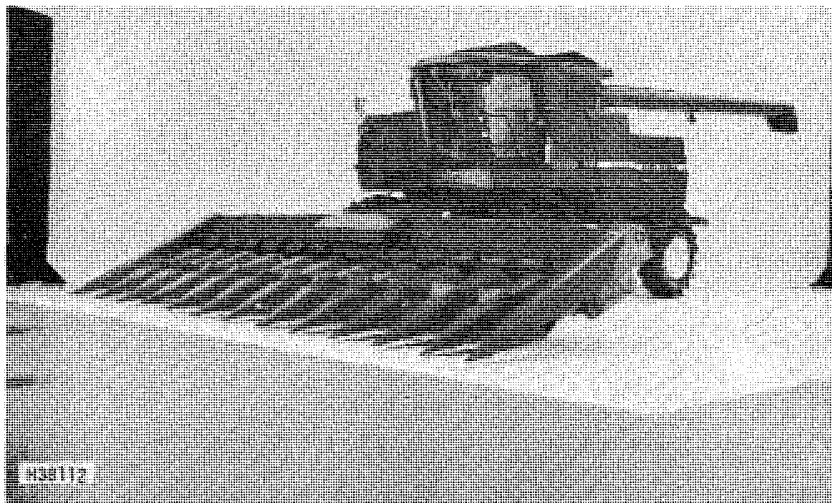
"Right-hand" and "left-hand" sides are determined by facing in the direction the combine will travel when in use.

Record your combine product identification and serial number in the space provided.

The warranty on this combine appears on your copy of the purchase order which you should have received from your dealer when making your purchase. This warranty provides you the assurance that John Deere will back its products where defects appear within the warranty period. In some circumstances, John Deere also provided field improvements, often without charge to the customer, even if the product is out of warranty.

The tire manufacturer's warranty supplied with your machine may not apply outside the U.S. and Canada.

Warranty and field improvements are a part of John Deere's product support program for customers who operate and maintain their equipment as described in this manual. Should the equipment be abused or modified to change its performance beyond the original factory specifications, the warranty will become void and field improvements may be denied. Setting fuel delivery above specifications or otherwise overpowering machines will result in such action.





# Contents

---

	<b>Page</b>
Contents .....	00-01
Safety .....	05-01
Operator's Station .....	10-01
Engine Break-In .....	15-01
Prestarting Checks .....	20-01
Operating the Engine .....	25-01
Driving the Combine .....	30-01
Transporting .....	35-01
Lighting and Signals .....	40-01
Fuels and Lubricants .....	45-01
Lubrication and Maintenance .....	50-01
Fundamentals of Combine Harvesting .....	55-01
Headers .....	60-01
Feeder House .....	65-01
Separator .....	70-01
Grain Tank and Unloading Auger .....	75-01
Engine Service .....	80-01
Electrical System .....	85-01
Monitors .....	90-01
Hydraulic System .....	95-01
SideHill Leveling System .....	100-01
Power Train .....	105-01
Air Conditioner and Heater .....	110-01
Trouble Shooting .....	115-01
Storage .....	120-01
Crime Prevention .....	125-01
Specifications .....	130-01
Index .....	135-01



# Safety

## SAFETY DECALS



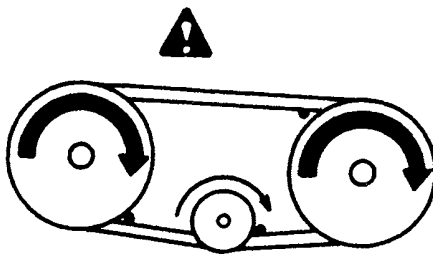
H28468N

**!** **CAUTION, WARNING or DANGER:** Decals with these headings and symbol indicate the possibility of personal injury.

**IMPORTANT:** Decals with this heading indicate the possibility of damage to the machine.

Decals are located in areas where they apply.

## AVOID CONTACT WITH MOVING PARTS



H36680

Keep guards and shields in place at all times while operating the combine. Always disengage separator and shut off engine before removing guards or shields.

Unauthorized modifications to the machine may impair the function and or safety and affect machine life.

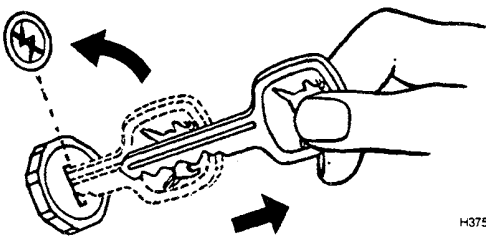
Keep hands, feet, and clothing away from power-driven parts.

Never clean, lubricate, or adjust the combine when it is running unless it is specifically stated to do so.

Everyone must be clear before starting engine or running combine.

Never attempt to clear obstructions off the header or unplug or clean separator unless the separator is disengaged and the engine is shut off.

## LEAVING COMBINE UNATTENDED



H37524

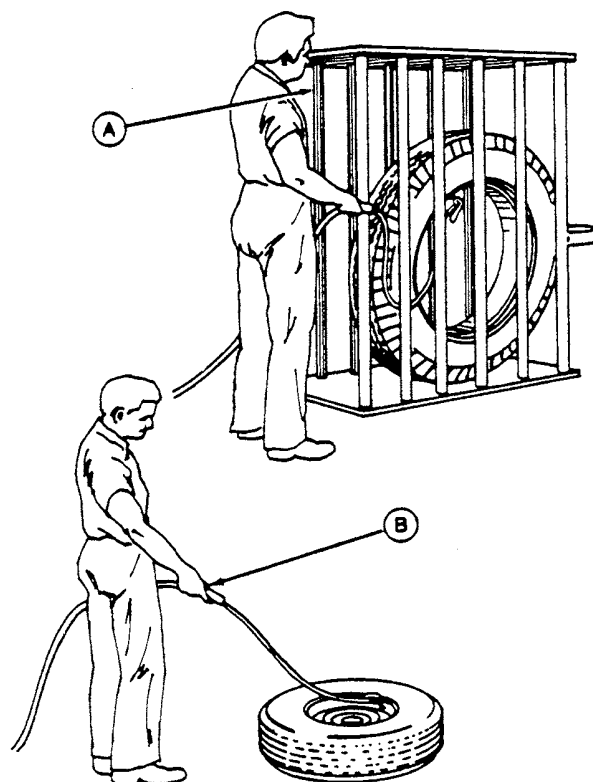
Before leaving the combine unattended, turn off engine and remove keys, support the header with either the hydraulic cylinder safety stop, or lower it to the ground. The gearshift lever must be in neutral and the parking brake engaged. Lock cab doors.

## SERVICE TIRES SAFELY

Failure to follow proper procedures when mounting a tire on a wheel or rim can produce an explosion which may result in serious injury or death. Do not attempt to mount a tire unless you have the proper equipment and experience to perform the job. Have it done by your John Deere dealer or a qualified tire repair service.

When seating tire beads on rims, never exceed 35 psi (240 kPa) (2.4 bar) or maximum inflation pressures specified by tire manufacturers for mounting tires. Inflation beyond this maximum pressure may break the bead, or even the rim, with dangerous explosive force. If both beads are not seated when the maximum recommended pressure is reached, deflate, reposition tire, re-lubricate bead, and reinflate.

Detailed tire mounting instructions, including necessary safety precautions, are contained in John Deere Fundamentals of Service (FOS) Manual 55, Tires and Tracks, available through your John Deere dealer. Such information is also available from the Rubber Manufacturers Association and from tire manufacturers.

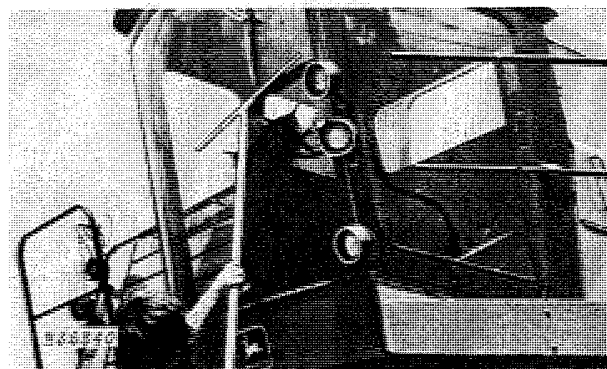


- A—Use a safety cage if available.
- B—Do not stand over tire. Use a clip-on chuck and extension hose.

T50123

## WASHING FRONT CAB WINDOW

To wash front window of cab, stand on ground and use a long handled squeegee or mop to reach top of window. Do not stand on feeder house or header top beam, as this could result in a fall.

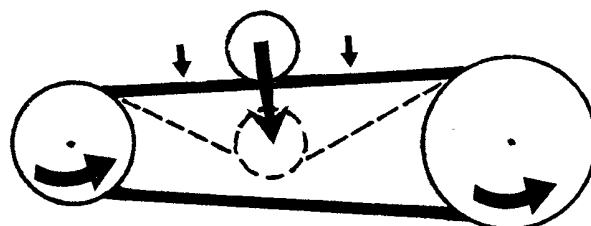


H35340

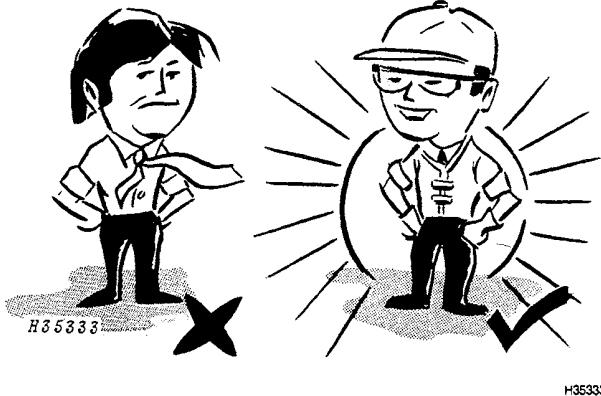
## SERVICING DRIVES AND DRIVE RELATED AREAS

Shut off engine and remove key before servicing the combine in either a belt driven area or any area receiving power from a belt drive. Some drives, due to their clutching and declutching characteristics, can be engaged when the engine is running by the applying or removing of outside forces.

Replace any shields that were removed.



## OPERATE SAFELY



Clothing worn by operator must be fairly tight and belted. Loose jackets, shirts, or sleeves must never be worn.

Disengage separator lever, move shift lever to neutral and sound horn before starting engine.

Be careful when operating on hillsides so the combine will not tip.

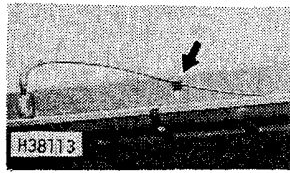
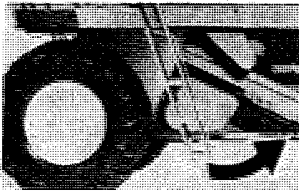
Always keep the combine in gear when going down hills.

Use right-hand cab door to get to engine compartment or feeder house areas. Never climb to these areas from the ground.

Do not ride or attempt to climb rear ladder while combine is moving.

When operating combine in extremely muddy conditions, swing ladder up to prevent it from being bent when backing up.

The radio antenna must be bent forward and secured with clip any time the combine may come into contact with a high voltage wire or when combine is transported.



## BATTERIES



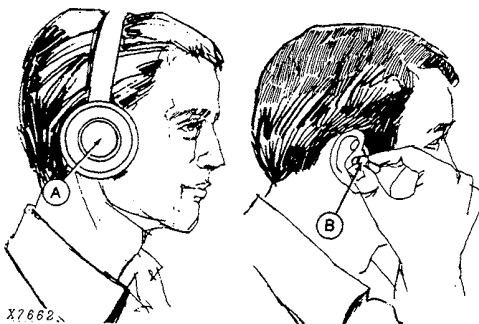
Batteries generate explosive gases. Keep sparks, flames, burning cigarettes, or other ignition sources away at all times. Always shield eyes when working near batteries. Always wear safety glasses.

Do not connect or disconnect live circuits.

Turn off charger before attaching or removing a lead from the battery.

Ventilate the area when charging.

## NOISE



Prolonged exposure to loud noise can cause impairment or loss of hearing.

Wear a suitable hearing protective device such as earmuffs (A) or earplugs (B) to protect against objectionable or uncomfortable loud noises.

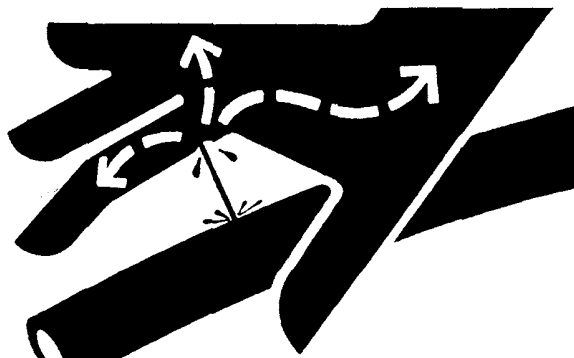
A—Earmuffs  
B—Earplugs

## AVOID HIGH-PRESSURE FLUIDS

Escaping fluid under pressure can penetrate the skin causing serious injury. Relieve pressure before disconnecting hydraulic or other lines. Tighten all connections before applying pressure. Keep hands and body away from pin holes and nozzles which eject fluids under high pressure. Use a piece of cardboard or paper to search for leaks. Do not use your hand.

If ANY fluid is injected into the skin, it must be surgically removed within a few hours by a doctor familiar with this type injury or gangrene may result.

Cracking hydraulic line fittings to lower the feeder house will result in an instantaneous dropping of feeder house or feeder house and header.



X9811

## FIRE EXTINGUISHER

Have a multipurpose dry chemical fire extinguisher filled and handy. Know how to use it.

DO NOT refuel with the engine running.

DO NOT smoke or use a lantern when refueling.

The part number of the extinguisher is AT62018. See Operator's Station for installation instructions.



RW2389

## TRANSPORT SAFELY

Never ride or allow anyone on the operator's platform.

Be extra careful when transporting the combine in hilly country. Never transport with grain in tank and always lock brake pedals together.

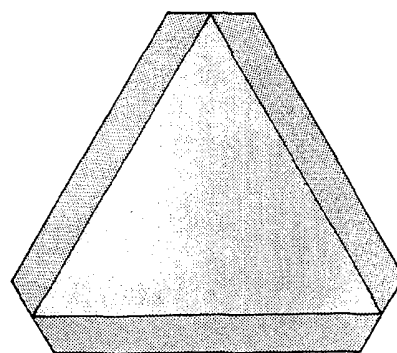
Never transport combine with 1253A Row Crop Head attached faster than 8 mph (12.9 km/h). A model 25 Combine Transport Trailer Frame is available for transporting headers.

When transporting the combine on a road or highway, use accessory lights and devices for adequate warning to the operators of other vehicles. In this regard, check local governmental regulations. Always check width laws.

The radio antenna must be bent forward and secured with clip when transporting combine. This prevents the antenna coming into contact with a high voltage wire.

At certain transport speeds a hopping action occurs with 73 x 44.00-32 high flotation tires. Speeding up or slowing down eliminates the problem.

*Do not use hitch ring on heavy-duty axle for towing (combine or wagon). Ring may be used to pull combine out of mud.*



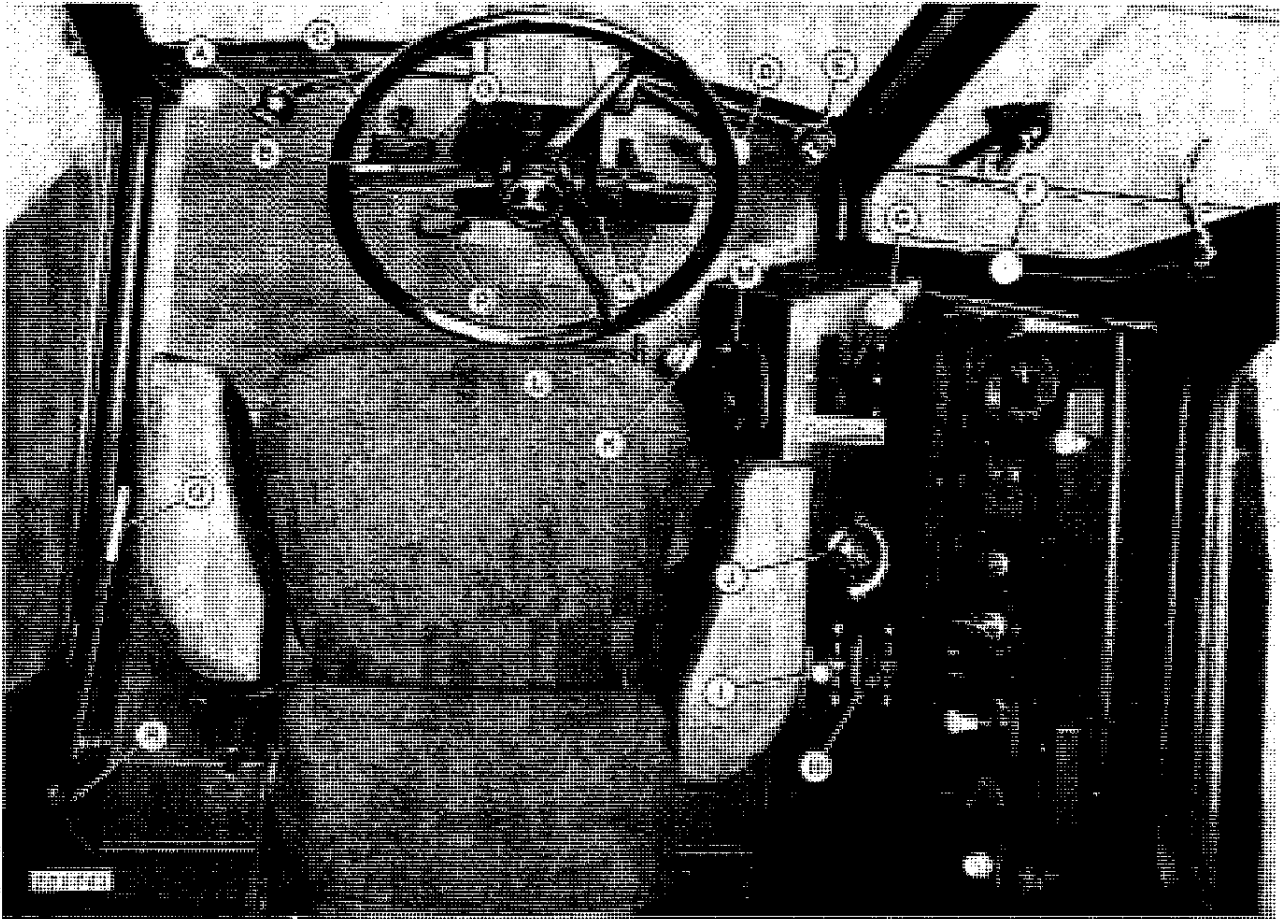
H35338

H35338



# Operator's Station

## INSTRUMENTS AND CONTROLS IDENTIFICATION



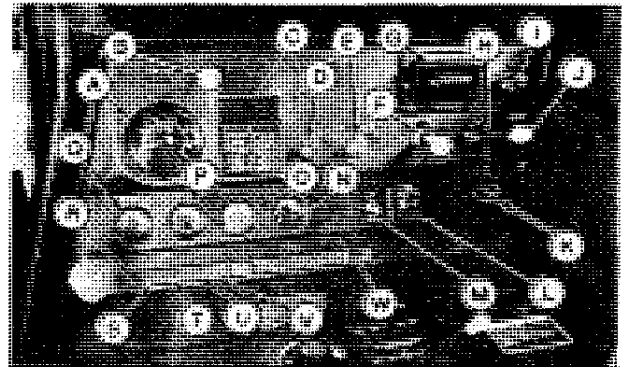
	Page		Page
A—Reel Lift or Variable Speed Feeder House Control .....	60-04,65-01	I—Throttle .....	10-16
B—Turn Signals .....	30-03	J—Reel Drive or Belt Pickup Drive Control .....	60-03
C—Steering Wheel .....	—	K—Variable Speed Feeder House Reverser Handle .....	65-02
D—Hydrostatic Drive Speed Range Control (Optional) or Selective Ground Speed Control .....	30-02	L—Parking Brake .....	105-24
E—Header Lift Control Lever .....	60-03	M—Concave Opening Control .....	70-01
F—Separator Control Lever .....	70-01	N—Brake Pedals .....	30-02
G—Gearshift .....	30-01, 30-02	O—Clutch Pedal (Posi-Torq™) .....	30-01,30-02
H—Cylinder Speed Control .....	70-02	P—Steering Column Pedal .....	10-16
		Q—Grain Tank Unloading Auger Lever .....	75-02
		R—Unloading Auger Hydraulic Swing Control .....	75-02

H3534:

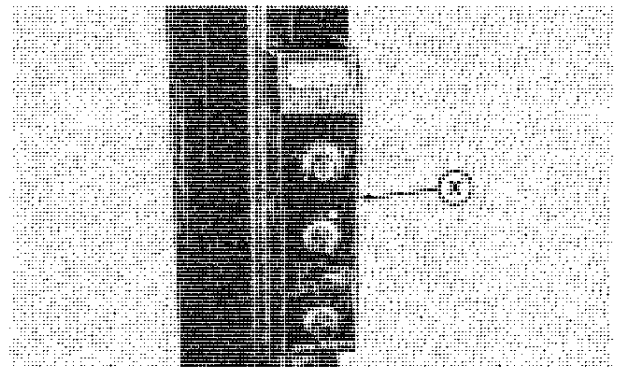


### Instrument Panel Controls and Instruments

	Page
A —Cylinder Speed Tachometer .....	10-03
B —Header Electromagnetic Clutch Switch .....	60-03
C —Digital Display Speed Monitoring System .....	10-03
D —Horn Button .....	—
E —Ignition Switch .....	10-16
F —Fuel Shutoff Knob .....	25-01
G —Ashtray .....	—
H —Light Switch .....	40-02
I —Cigarette Lighter .....	—
J —Ether Aid Button .....	25-05
K —Engine Hour Meter .....	10-03
L —DIAL-A-MATIC® Header Height Control Switch (Optional) .....	60-03
M —4-Wheel Drive Switch (Optional) .....	105-11
N —Fuel Gauge .....	10-04
O —Voltmeter .....	10-04
P —Engine Oil Pressure Gauge .....	10-04
Q —Coolant Temperature Gauge .....	10-05
R —Air Filter Restriction Indicator Light .....	10-05
S —Parking Brake Indicator Light .....	10-05
T —Transmission Oil Pressure Indicator Light .....	10-06
U —Hydraulic Oil Overheating Indicator Light .....	10-06
V —Plugged Straw Walker Indicator Light .....	10-05
W —Hydrostatic Oil Overheating Indicator Light .....	10-06
X —HARVES TRAK™ Monitor .....	10-07



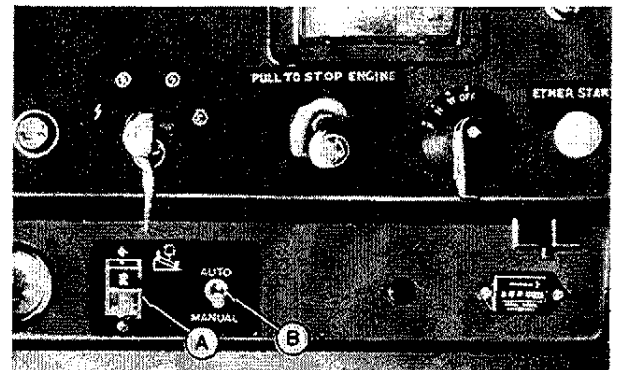
H50083



H50239

### SideHill 6620 Only

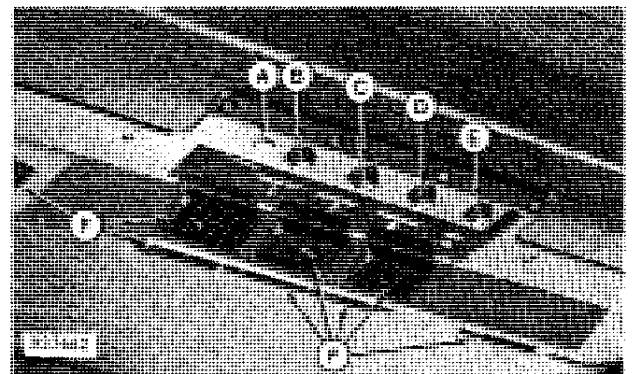
	Page
A —Manual Leveling Control Switch .....	100-03
B —Leveling Control Cut-Out Switch .....	100-03



H36843

### Operator's Cab Controls

A —High Pressure Switch Light .....	10-07,110-05
B —Air Conditioning Temperature Control Knob .....	10-07
C —Heater Control Knob .....	10-07
D —Pressurizer Fan Switch .....	10-07
E —Windshield Wiper Switch .....	10-07
F —Air Flow Directional Louvers .....	10-07



H37662

## INSTRUMENTS



H37666

### Digital Display Tachometer Speed Monitoring System

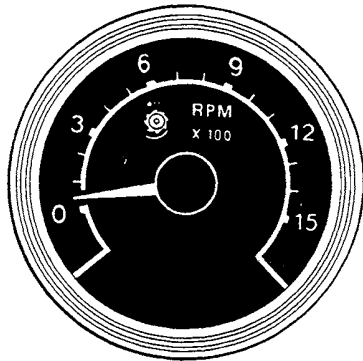
The display shows ground speed when ignition switch is turned on.

Press symbol, ground speed (A), header shaft speed (B), cleaning fan speed (C), engine speed (D), to show speed for that function on the display (F).

Each symbol, when touched, will show a square (E) in the left-hand corner of the digital readout (F). The square (E) moves on the selector symbol showing the location of symbol that has been touched.

The dot (G) between display and function symbols automatically controls brightness of the display for ambient light conditions.

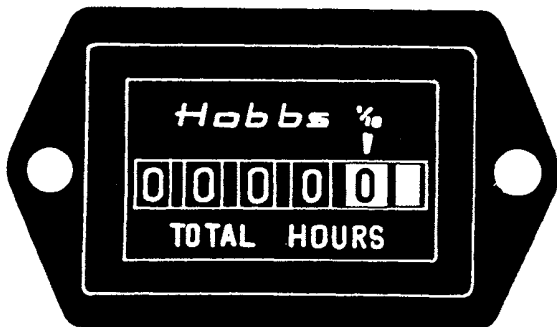
- |                      |                      |                               |
|----------------------|----------------------|-------------------------------|
| A—Ground Speed       | C—Cleaning Fan Speed | E—Selector Symbol With Square |
| B—Header Shaft Speed | D—Engine Speed       | F—Digital Readout             |
|                      |                      | G—Brightness Dot              |



H35348

### Cylinder Speed Tachometer

The tachometer reads cylinder rpm by hundreds.



H25240

### Engine Hour Meter

The hour meter shows accumulated engine service in hours and tenths of hours when engine is running. When the engine is turned off, the hour meter will stop.

*NOTE: Hour meter will not register with ignition switch in "ACC" position.*

Thank you so much for reading.  
Please click the “Buy Now!”  
button below to download the  
complete manual.



After you pay.

You can download the most  
perfect and complete manual in  
the world immediately.

Our support email:

[ebooklibonline@outlook.com](mailto:ebooklibonline@outlook.com)