

6600 AND 7700 COMBINES



JOHN DEERE

OPERATORS MANUAL 6600 AND 7700 COMBINES

OMH84605 J2 English

JOHN DEERE HARVESTER WORKS
OMH84605 J2


LITHO IN THE U.S.A.
ENGLISH





To the Purchaser

This new combine was carefully designed and manufactured to give years of dependable service. To keep it running efficiently, read the instructions in this operator's manual. Each section is clearly identified so you can easily find the information you need—whether it is operation, lubrication, or service. Read the Table of Contents to learn where each section is located. Use the alphabetical index for fast reference.

 This safety alert symbol identifies important safety messages in this manual. When you see this symbol, be alert to the possibility of personal injury and carefully read the message that follows.

This operator's manual covers the feeder house and separator areas of the combine. For platform and corn head information, see the separate operator's manuals furnished with that equipment.

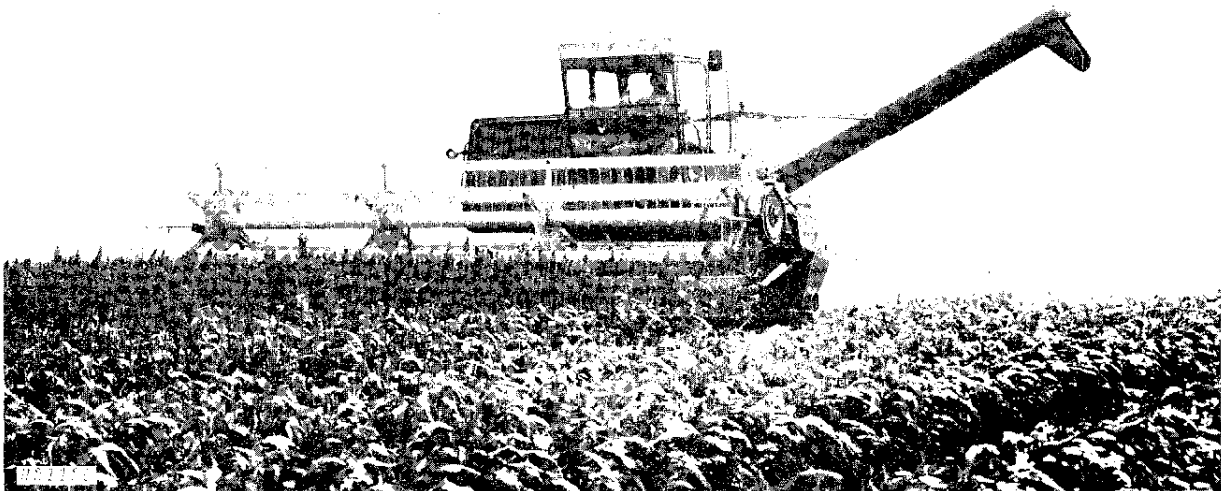
In addition to the equipment furnished with your combine, attachments are available to help you do a

better job in special crop conditions. These are described in the attachments section of this manual and can be purchased from your John Deere dealer.

"Right-hand" and "left-hand" sides are determined by facing in the direction the combine will travel when in use. The radiator end of the engine is referred to as the "front," the flywheel end as the "rear."

Record your combine serial numbers in the space provided on page 161. Your dealer needs this information to give you prompt, efficient service when you order parts or attachments. If your combine requires replacement parts, go to your John Deere dealer where you can obtain Genuine John Deere parts—accept no substitutes.

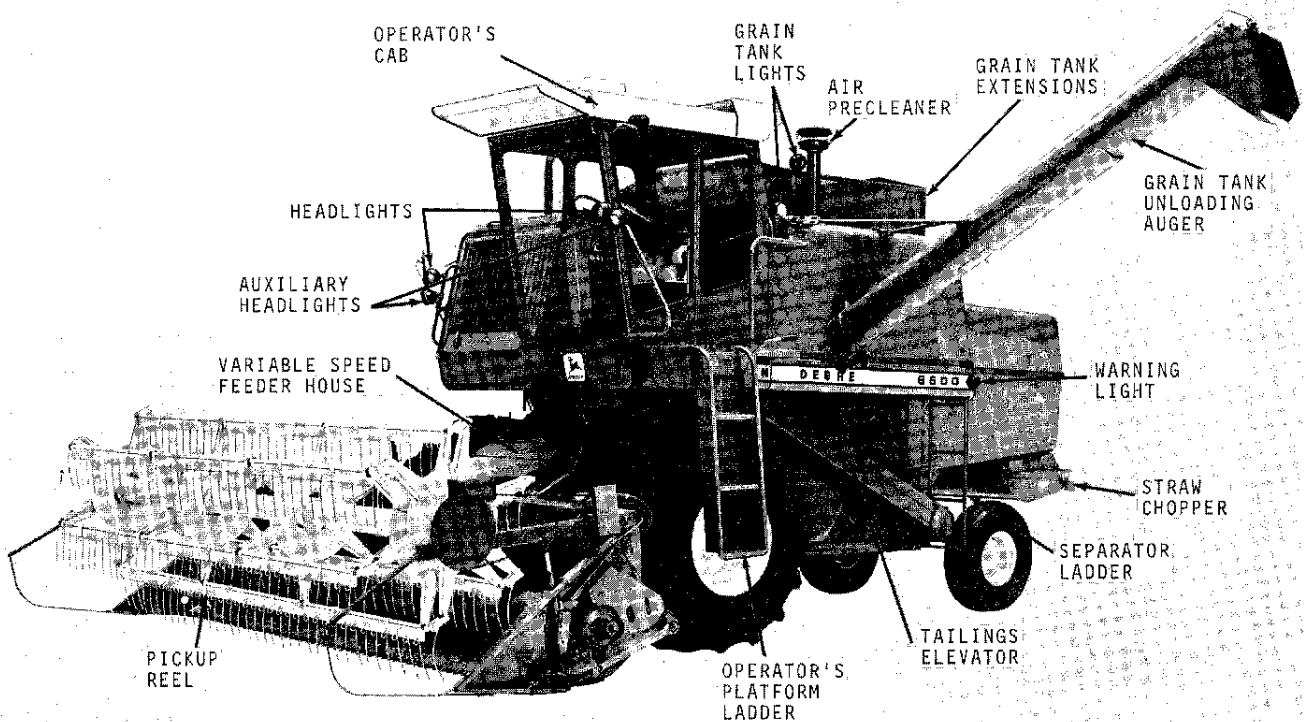
The warranty on this combine appears on your copy of the purchase order which you should have received from your dealer when you purchased the combine.





Contents

	Page
Controls and instruments	2-3
Operation	4-34
Safety suggestions	35
Fuels and lubricants	36-37
Lubrication and periodic service	38-51
Service	52-129
Trouble shooting	130-144
Storage	145-147
Attachments	148-155
Specifications	156-162
Index	163-166



H22678



Controls and Instruments

Before attempting to operate your new combine, become familiar with the location and purpose of its controls and instruments. Study these pages carefully, regardless of your previous combine experience.

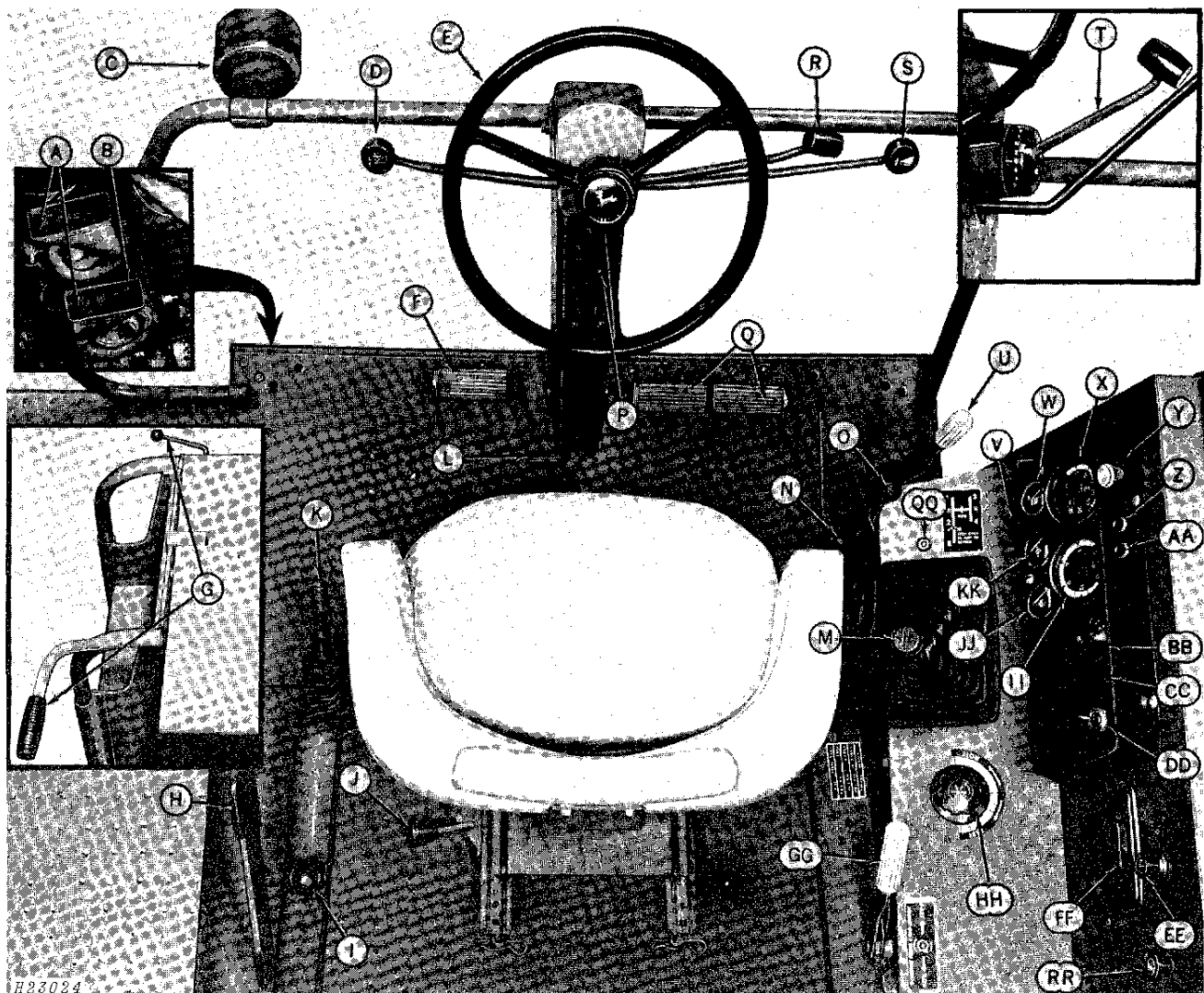
The control levers and knobs have different colors and shapes to help you quickly locate the controls while operating the combine. Colors on controls indicate:

RED—Combine movement controls (Throttle, Gear-shift Lever, Selective Ground Speed Control)

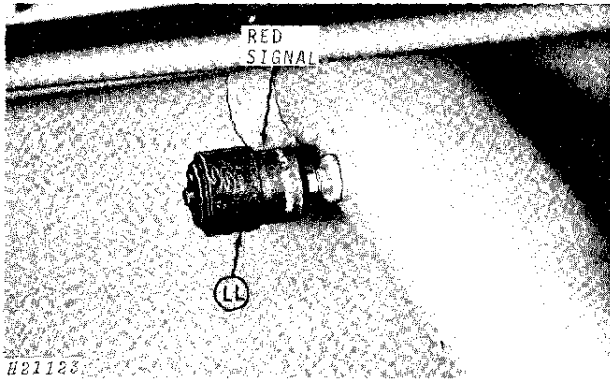
YELLOW—Auxiliary Power Controls (Separator Control Lever, Cylinder Speed Control Ratchet, Platform or Corn Head Electromagnetic Clutch Switch)

BLACK—Miscellaneous Function Controls (Platform or Corn Head Height Control, Hydraulic Lift Reel Control, etc.)

OPERATOR'S PLATFORM

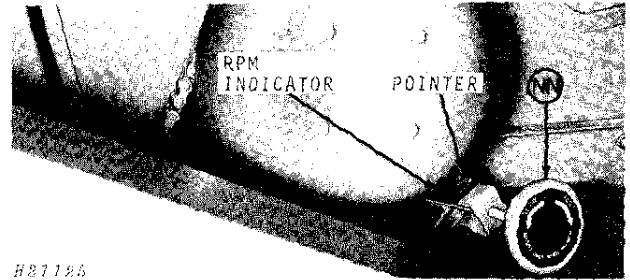


ENGINE - AIR INTAKE



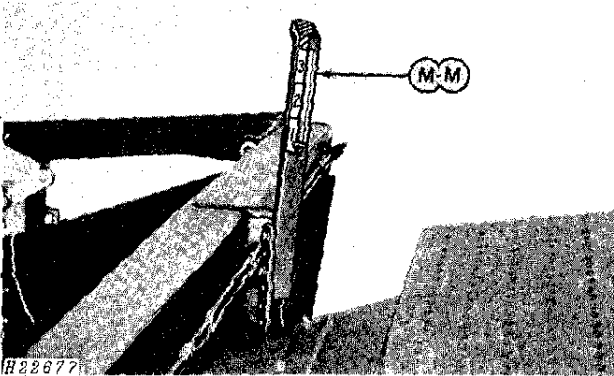
H21123

SEPARATOR

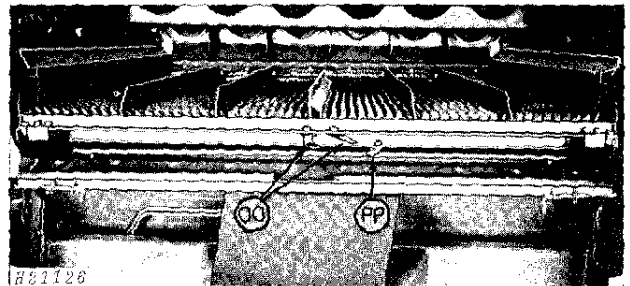


H21125

FEEDER HOUSE



H22877



H21126

	Page
A - Truck Signal Horns	27
B - Coolant Temperature Warning Horn or Straw Walker Warning Horn (Attachments)	7, 27
C - Headlight	27
D - Hydraulic Lift Reel Control (Optional) or Variable Speed Feeder House Control (Optional)	14, 151
E - Steering Wheel	24
F - Clutch Pedal (Belt Drive Combine)	25
G - Pivoting Ladder	11
H - Grain Tank Unloading Auger Lever	22
I - Unloading Auger Hydraulic Swing Control	22
J - Operator's Seat Control	10
K - Parking Brake Lever	24
L - Steering Column Control	11
M - Gearshift Lever	23
N - Concave Opening Control Wheel	17
O - Throttle	6
P - Ground Speed Indicator (Regular on 7700; Attachment on 6600) (Belt Drive Combine)	23
Q - Brake Pedals	25
R - Selective Ground Speed Control	23

	Page
S - Platform or Corn Head Height Control	13
T - Hydrostatic Drive Speed Range Control (Optional)	24
U - Separator Control Lever	16
V - Choke (Gasoline Engine only)	6
W - Fuel Gauge	7
X - Engine Tach-Hour Meter	7
Y - Platform or Corn Head Electromagnetic Clutch Switch (Optional)	13
Z - Parking Brake Indicator Light	25
AA - Alternator Indicator Light	6
BB - Light Switch	27
CC - Horn Button	27
DD - Key Switch	6
EE - Cigarette Lighter	27
FF - Ash Tray	27
GG - Cylinder Speed Control Ratchet	16
HH - Hydrostatic Drive Reel or Hydrostatic Drive Belt Pickup Control (Optional)	151
II - Cylinder Speed Tachometer	16
JJ - Coolant Temperature Gauge	7
KK - Engine Oil Pressure Gauge	7
LL - Air Restriction Indicator (Regular on 7700; Attachment on 6600)	7
MM - Platform Float Spring Indicator (Attachment)	150
NN - Fan Speed Control Wheel	20
OO - Chaffer Opening Control	20
PP - Sieve Opening Control	20
QQ - Powered Rear Wheel Drive Switch (Optional 7700 only)	
RR - Engine Fuel Shut Off (Diesel Engine only)	6

Thank you so much for reading.
Please click the “Buy Now!”
button below to download the
complete manual.



After you pay.

You can download the most
perfect and complete manual in
the world immediately.

Our support email:

ebooklibonline@outlook.com