

# 2120 Tractor



## OPERATORS MANUAL

2120  
Tractor

OML25883 Issue F8    English

**OML25883 Issue F8**

LITHO IN U.S.A.  
ENGLISH





## TO THE PURCHASER

Your versatile new John Deere Tractor meets the exacting requirements of modern farming.

Operating ease and comfort, hydraulic power when and where you need it, the ability to match engine power and transmission speed to any job, outstanding economy and dependability, modern styling, and simplicity of lubrication and service are all special features of this tractor.

At the time the tractor was delivered, the John Deere dealer discussed with you its safe operation and proper care. However, before putting the tractor to work, read this manual. It contains complete instructions for operating the tractor, caring for it, and taking full advantage of its many time- and labor-saving features. After reading the manual, keep it in a convenient place for quick and easy reference if questions arise concerning operation, lubrication, or service.

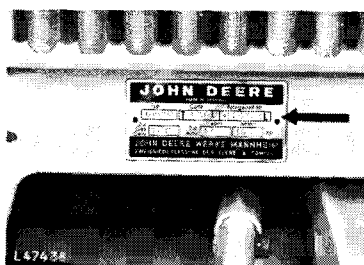
References to right and left sides of the tractor are made throughout this manual. The left and right sides are determined when facing forward in the operator's seat.

The service policy which you received with your new tractor certifies that the tractor was properly inspected and prepared for delivery by your John Deere dealer.

Your John Deere dealer wants to help you get the most value from your tractor. His skilled servicemen can handle every job efficiently. These men are trained in modern service methods; they have all necessary tools and equipment. If new parts are needed, only genuine John Deere parts will be installed. These parts are exact duplicates of the originals, made from the same patterns and of the same high-quality materials.

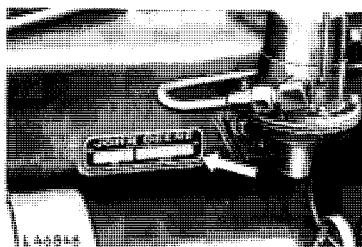
When ordering new parts, only state the 6-digit number group — without letters — of the tractor and engine serial numbers. \*

For ready reference, locate and record these numbers in the spaces provided at the right of the following illustrations.



Tractor Serial Number

Record here



Engine Serial Number

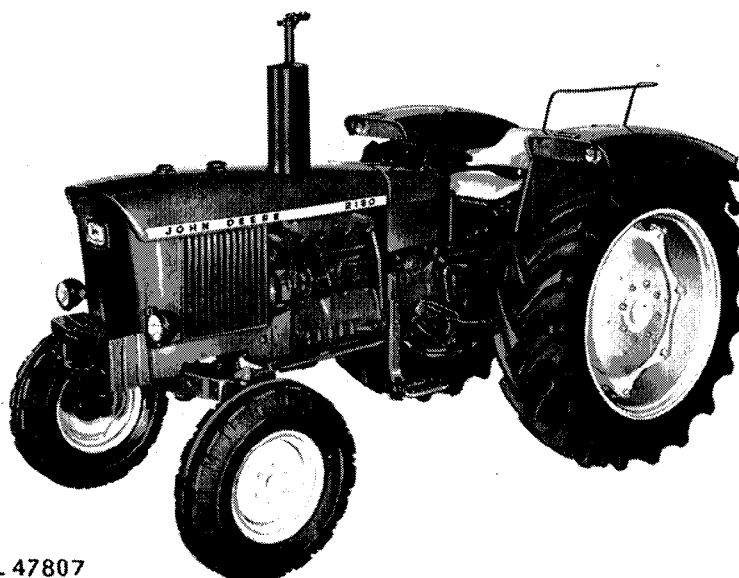
Record here

\* Whenever serial numbers are required on all warranty claims or correspondence pertaining to this machine, it is extremely important that the complete number groups together with all letters be furnished. This point cannot be overemphasized.

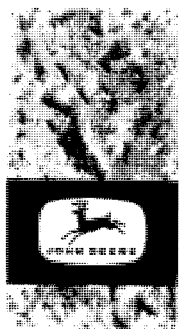


# CONTENTS

|                                            | Page |
|--------------------------------------------|------|
| SPECIFICATIONS . . . . .                   | 2    |
| CONTROLS AND INSTRUMENTS . . . . .         | 4    |
| OPERATION . . . . .                        | 6    |
| SAFETY RULES . . . . .                     | 43   |
| FUELS AND LUBRICANTS . . . . .             | 44   |
| LUBRICATION AND PERIODIC SERVICE . . . . . | 46   |
| SERVICE . . . . .                          | 58   |
| TRACTOR STORAGE . . . . .                  | 68   |
| TROUBLE SHOOTING . . . . .                 | 70   |
| INDEX . . . . .                            | 75   |



L 47807



# SPECIFICATIONS

## ENGINE

Maximum horsepower \* measured at the flywheel

|                                         |                                    |
|-----------------------------------------|------------------------------------|
| a) incl. Accessories **                 | 67 HP (68 PS)                      |
| b) without Accessories **               | 71 HP (72 PS)                      |
| PTO horsepower at 2500 rpm engine speed | 61 HP (62 PS)                      |
| Maximum torque at 1500 rpm              | 170 ft.lbs. (23,5 mkg)             |
| Number of cylinders                     | 4                                  |
| Bore                                    | 4.02 in (102 mm)                   |
| Stroke                                  | 4.33 in (110 mm)                   |
| Displacement                            | 219 cu. in (3590 cm <sup>3</sup> ) |
| Compression ratio                       | 16.7 : 1                           |
| Firing order                            | 1 - 3 - 4 - 2                      |
| Intake valve clearance                  | 0.014 in (0.35 mm)                 |
| Exhaust valve clearance                 | 0.018 in (0.45 mm)                 |
| Slow idle                               | 650 rpm                            |
| Fast idle                               | 2650 rpm                           |
| Full engine power at                    | 2500 rpm                           |
| Working speed range                     | 1500 to 2500 rpm                   |

\* 1 PS = 0.736 KW

\*\* Waterpump, Fan, Generator, Air Cleaner and Muffler

## ELECTRICAL SYSTEM

|                                                             |          |
|-------------------------------------------------------------|----------|
| Battery voltage                                             | 12 Volt  |
| Battery specific gravity at full charge (at 80° F = +27° C) | 1.26     |
| Battery terminal grounded                                   | negative |

## CAPACITIES

|                                 | Imp. Gals | (US Gals) | (Litres) |
|---------------------------------|-----------|-----------|----------|
| Fuel tank                       | 16.25     | (19.50)   | (73.80)  |
| Cooling System                  | 2.50      | ( 3.00)   | (11.40)  |
| Crankcase (including filter)    | 1.25      | ( 1.50)   | ( 5.70)  |
| Transmission — hydraulic system | 8.40      | (10.00)   | (38.00)  |
| Air Cleaner (oil bath type)     | 0.22      | ( 0.26)   | ( 1.00)  |
| Belt pulley                     | 0.25      | ( 0.30)   | ( 1.10)  |

|                    |                        |
|--------------------|------------------------|
| CLUTCH             | Dual stage             |
| Transmission       | Collar Shift           |
| Optional equipment | Hi-Lo and Collar Shift |

|                   |                                                                              |
|-------------------|------------------------------------------------------------------------------|
| FINAL DRIVE       | Planetary reduction drive,                                                   |
| Differential Lock | Hand or foot operated<br>mechanical lock,<br>spring-loaded out of engagement |

**POWER TAKE-OFF (continous running)**

|                        |                                          |
|------------------------|------------------------------------------|
| <b>Rear</b> . . . . .  | .540 rpm single<br>540 and 1000 rpm dual |
| <b>Front</b> . . . . . | .1000 rpm                                |

|                                   |                                                                               |
|-----------------------------------|-------------------------------------------------------------------------------|
| <b>HYDRAULIC SYSTEM</b> . . . . . | .closed center, constant<br>pressure of 2200 psi<br>(155 kg/cm <sup>2</sup> ) |
|-----------------------------------|-------------------------------------------------------------------------------|

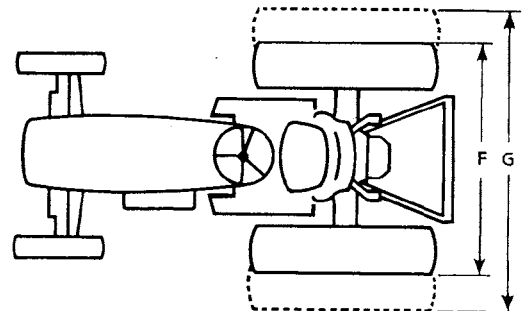
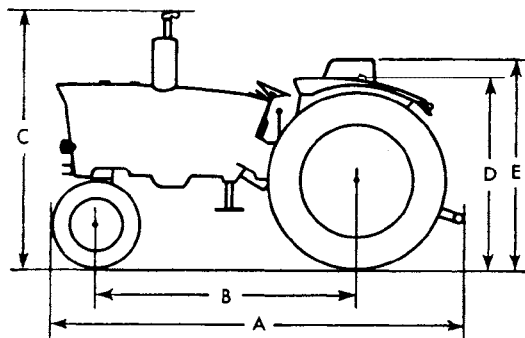
**BRAKES**

|                                |                                                                       |
|--------------------------------|-----------------------------------------------------------------------|
| <b>Foot operated</b> . . . . . | .Hydraulically actuated,<br>wet-disk type, one each per<br>rear wheel |
| <b>Handbrake</b> . . . . .     | .Band-type brake, acting<br>on differential                           |

**TIRES**

|                              | <b>Tire Size</b>                                         | <b>Ply</b>                       |
|------------------------------|----------------------------------------------------------|----------------------------------|
| <b>Rear Tires</b> . . . . .  | <b>14,9/13-36</b><br><b>18,4/15-30</b><br><b>15,5-38</b> | <b>6</b><br><b>6</b><br><b>6</b> |
| <b>Front Tires</b> . . . . . | <b>6,50 - 16</b><br><b>7,50 - 16</b>                     | <b>6</b><br><b>6</b>             |

**DIMENSIONS**



|                                                      | <b>Tire size</b>        |                         |                         |
|------------------------------------------------------|-------------------------|-------------------------|-------------------------|
|                                                      | <b>14,9/13-36</b>       | <b>18,4/15-30</b>       | <b>15,5-38</b>          |
| <b>A = Overall length</b><br>(with 3-point hitch)    | 3600 mm<br>(141.73 in.) | 3600 mm<br>(141.73 in.) | 3600 mm<br>(141.73 in.) |
| <b>B = Wheelbase</b>                                 | 2180 mm<br>(85.83 in.)  | 2180 mm<br>(85.83 in.)  | 2180 mm<br>(85.83 in.)  |
| <b>C = Overall height</b><br>(vertical exhaust)      | 2145 mm<br>(84.45 in.)  | 2145 mm<br>(84.45 in.)  | 2145 mm<br>(84.45 in.)  |
| <b>D = Height up to fender</b>                       | 1615 mm<br>(63.58 in.)  | 1595 mm<br>(62.80 in.)  | 1605 mm<br>(63.20 in.)  |
| <b>E = Height up to back-<br/>rest for co-driver</b> | 1815 mm<br>(71.45 in.)  | 1795 mm<br>(70.67 in.)  | 1805 mm<br>(71.06 in.)  |

|                                                          | <b>Tire size</b>       |                        |                        |
|----------------------------------------------------------|------------------------|------------------------|------------------------|
|                                                          | <b>14,9/13-36</b>      | <b>18,4/15-30</b>      | <b>15,5-38</b>         |
| <b>F = Overall width</b><br>with smallest tread<br>width | 1940 mm<br>(76.38 in.) | 2006 mm<br>(78.98 in.) | 1945 mm<br>(76.57 in.) |
| <b>G = with largest tread<br/>width</b>                  | 2296 mm<br>(90.40 in.) | 2406 mm<br>(94.72 in.) | 2344 mm<br>(92.28 in.) |

|                                                      |                          |
|------------------------------------------------------|--------------------------|
| <b>Turning radius, with steering brake</b> . . . . . | <b>3160 (124 in.) mm</b> |
| <b>without steering brake</b> . . . . .              | <b>3700 (146 in.) mm</b> |

(Specifications and design subject to change without notice)

Thank you so much for reading.  
Please click the “Buy Now!”  
button below to download the  
complete manual.



After you pay.

You can download the most  
perfect and complete manual in  
the world immediately.

Our support email:

[ebooklibonline@outlook.com](mailto:ebooklibonline@outlook.com)