

1530 TRACTOR



JOHN DEERE

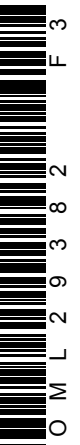
OPERATORS MANUAL

1530
TRACTOR

OML29382 F3 English

JOHN DEERE TRACTOR WORKS
OML29382 F3

LITHO IN THE U.S.A.
ENGLISH

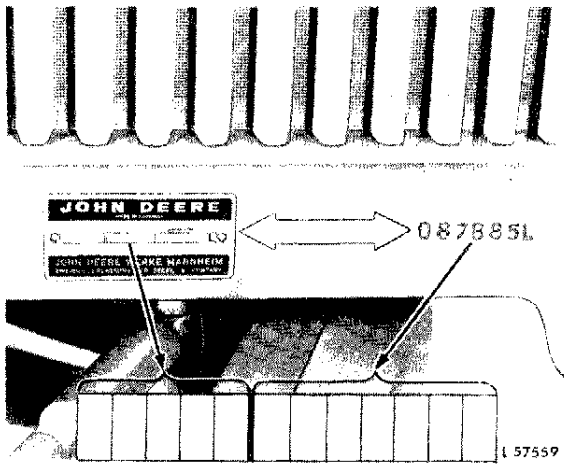




To the Purchaser

This new tractor was carefully designed and manufactured to give years of dependable service. To keep it running efficiently, read the instructions in this operator's manual. Each section is clearly identified so you can easily find the information you need—whether it is operation, lubrication and periodic service, or trouble shooting. Check the Contents to learn where each section is located. Use the alphabetical index for fast reference.

Record your tractor serial numbers in the spaces provided below. Your dealer needs this information to give you prompt, efficient service and parts. If your tractor requires replacement parts, go to your John Deere dealer where you can obtain genuine John Deere parts—accept no substitutes.



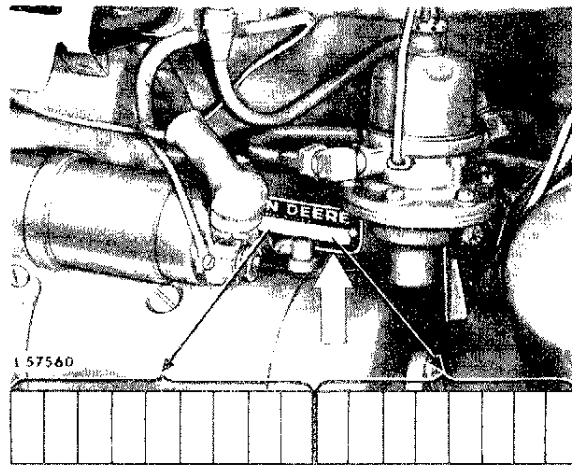
Record Tractor Serial Number here

The warranty on this tractor appears on your copy of the purchase order which you should have received from your dealer when you purchased the tractor.

The references in this manual to the "right-hand" and the "left-hand" sides of the tractor are determined by facing in the direction of tractor forward travel.



This safety alert symbol indicates important safety messages in this manual. When you see this symbol, be alert to the possibility of personal injury and carefully read the message that follows.

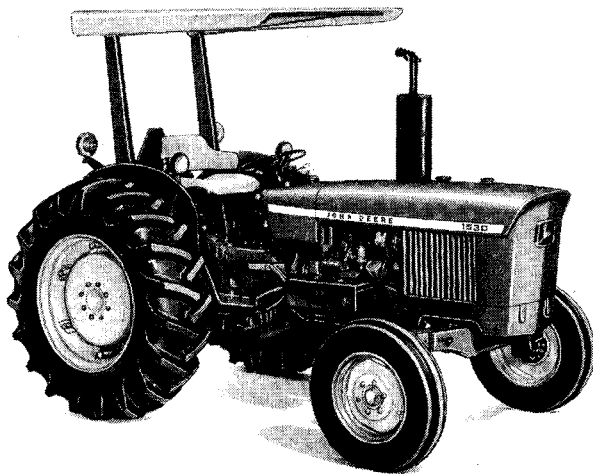


Record Engine Serial Number here

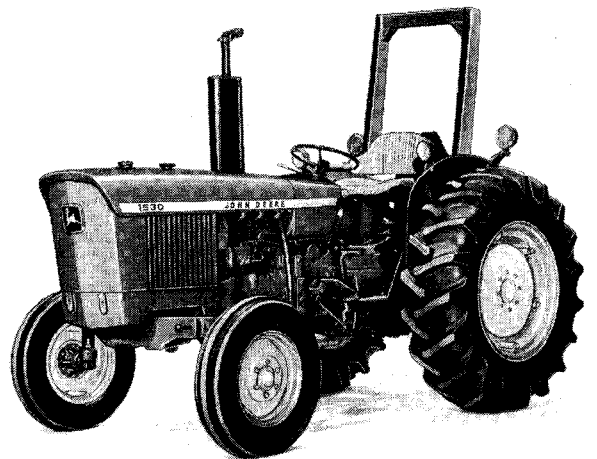


Contents

	Page
CONTROLS AND INSTRUMENTS	2
OPERATION	4
SAFETY RULES	36
FUELS AND LUBRICANTS	38
LUBRICATION AND PERIODIC SERVICE	40
SERVICE	54
TRACTOR STORAGE	66
TROUBLE SHOOTING	67
SPECIFICATIONS	72
INDEX	75



L 57703

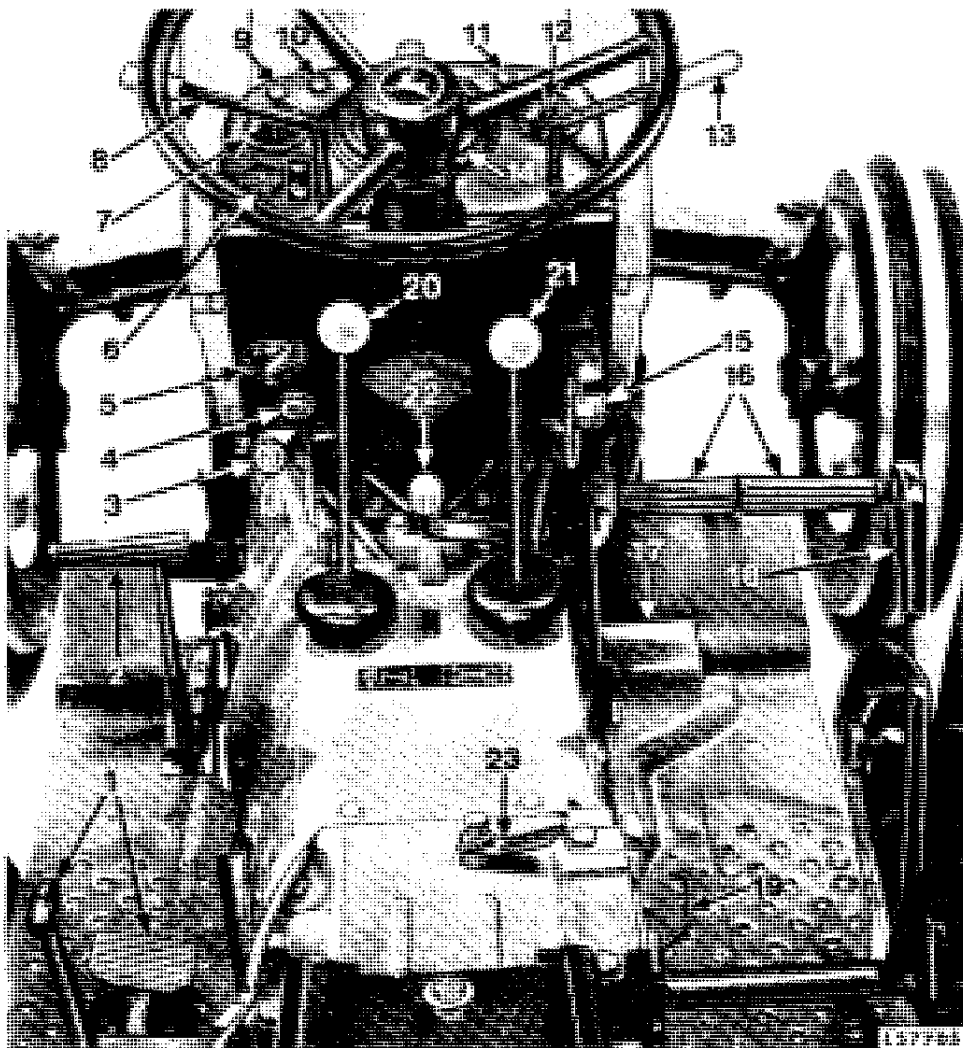


L 57704



Controls and Instruments

Before attempting to operate your new tractor, become familiar with the location and purpose of its controls and instruments. Study the next few pages carefully, regardless of your previous tractor experience.



- 1—Differential lock (lever and pedal)
- 2—Clutch pedal
- 3—Engine shut-off knob
- 4—Starter switch
- 5—Light switch
- 6—Turn-signal switch
- 7—Coolant temperature gauge
- 8—Hi-Lo shift lever

- 9—Air cleaner indicator light
- 10—Alternator indicator light
- 11—Engine oil pressure indicator light
- 12—Fuel gauge
- 13—Hand throttle
- 14—Speed-hour meter
- 15—Starting fluid adapter
- 16—Brake pedals

- 17—Foot throttle
- 18—Rockshaft control lever
- 19—Rockshaft selector lever
- 20—Range shift lever
- 21—Gear shift lever
- 22—PTO control lever
- 23—Rate-of-drop lever

INSTRUMENTS

Control Lights

Alternator



L 56 968

Engine Oil Pressure



L 56 960

The above control lights should light up as soon as switch key is moved clockwise to first position. If this is not the case, a burnt-out bulb may be the cause. If necessary, replace defective bulb.

The control lights should go out as soon as the engine is running and the engine speed has been raised. If this is not the case or if a light goes on during operation, immediately shut off engine and correct the problem.

If alternator indicator light goes on during engine operation, the alternator is not charging. Check for loose alternator connections, slackness of V-belt, or defective alternator.

If engine oil pressure indicator light goes on during engine operation, stop the engine, check oil level and condition of engine oil filter.

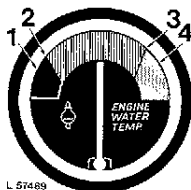
Air Cleaner Indicator Light



L 56 963

If air cleaner indicator light goes on, clean air filter element or replace element after it has been cleaned six times. Indicator is behind left-hand grille screen on some tractors.

Coolant Temperature Gauge

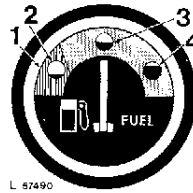


L 57489

- 1—100°F (38°C)
 - 2—135°F (57°C)
 - 3—224°F (107°C)
 - 4—240°F (116°C)
- Orange warning zone

If the gauge needle is in the orange warning zone, the engine is overheating and must be stopped at once. Check coolant level in radiator and check cooling system for leaks.

Fuel Gauge



L 57490

- 1—Orange Warning Zone
- 2—Empty Tank
- 3—Half-Full Tank
- 4—Full Tank

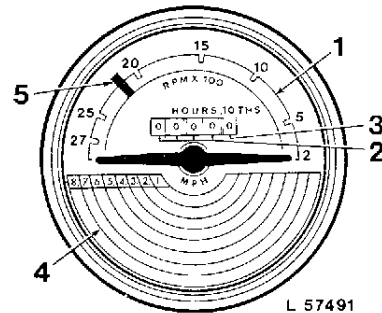
The fuel gauge shows the amount of fuel in tank, from "empty" to "half-full" and "full".

Refill tank as soon as needle points to orange zone.

Never run fuel tank completely dry.

Speed-Hour Meter

The speed-hour meter facilitates the economical use of the tractor under all operating conditions. It also facilitates choosing the right gear.



L 57491

The speed-hour meter shows the following:

- 1—Engine speed on the upper half of the dial. The figure shown multiplied by 100 indicates the actual number of engine revolutions.
- 2—Hours of operation in full hours.
- 3—Hours of operation in tenths of hours.
- 4—The tractor speed for the gear engaged.
- 5—PTO operation. The green mark shows the engine speed required for powershaft operation.

The hour meter facilitates close observation of the proper service intervals.

Thank you so much for reading.
Please click the “Buy Now!”
button below to download the
complete manual.



After you pay.

You can download the most
perfect and complete manual in
the world immediately.

Our support email:

ebooklibonline@outlook.com