

JOHN DEERE 1020, 1120, 1630 TRACTORS



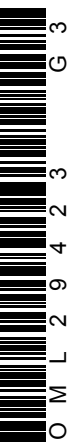
JOHN DEERE

OPERATORS MANUAL JOHN DEERE 1020, 1120, 1630 TRACTORS

OML29423 G3 English

OML29423 G3

LITHO IN THE U.S.A.
ENGLISH






To the Purchaser

Your versatile new John Deere Tractor meets the exacting requirements of modern farming.

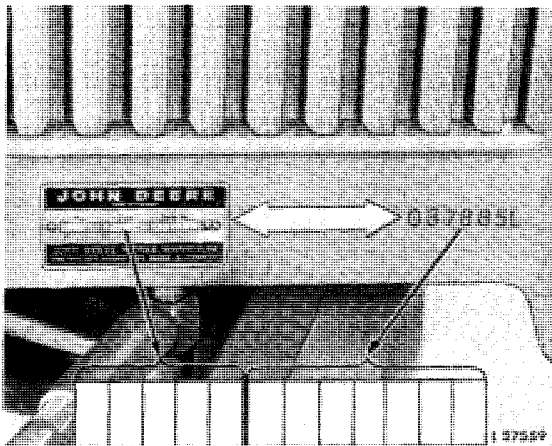
Operating ease and comfort, hydraulic power when and where you need it, the ability to match engine power and transmission speed to any job, outstanding economy and dependability, modern styling, and simplicity of lubrication and service are all special features of this tractor.

At the time the tractor was delivered, the John Deere dealer discussed with you its safe operation and proper care. However, before putting the tractor to work, read this manual.

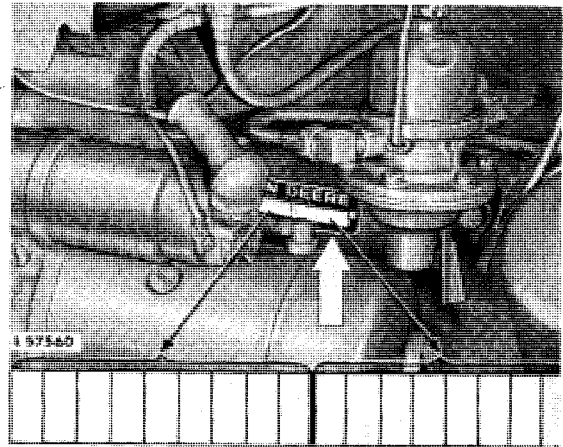
 This safety alert symbol indicates important safety messages in this manual. When you see this symbol, be alert to the possibility of personal injury and carefully read the message that follows.

When ordering new parts, only state the 6-digit number group — without letters — of the tractor and engine serial numbers.*

For ready reference, locate and record these numbers in the spaces provided under the following illustrations.



Record Tractor Serial Number Here



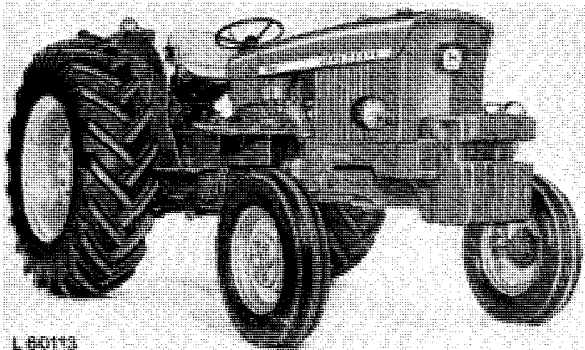
Record Engine Serial Number Here

* It is extremely important to quote complete serial number group together with all letters of both tractor and engine on all warranty claims or correspondence pertaining to this machine. This point cannot be overemphasized.



Contents

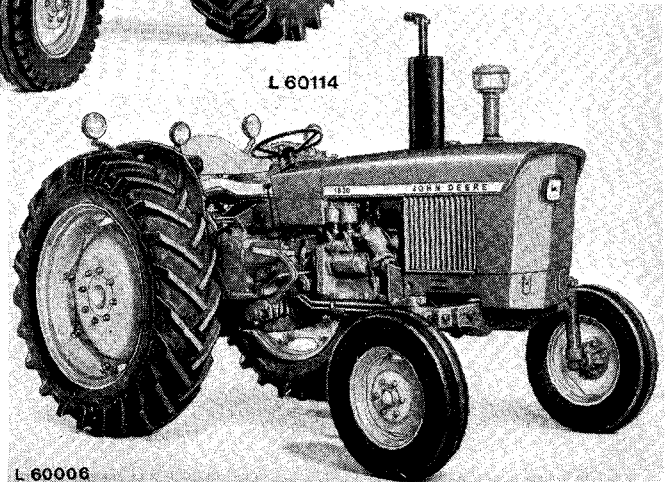
CONTROLS AND INSTRUMENTS	2	SERVICE	58
OPERATION	4	TRACTOR STORAGE	71
SAFETY RULES	41	TROUBLE SHOOTING	72
FUELS AND LUBRICANTS	43	HITCHES AND DRAWBARS	78
LUBRICATION AND PERIODIC SERVICE	45	SPECIFICATIONS	83
		INDEX	87



L 60113



L 60114

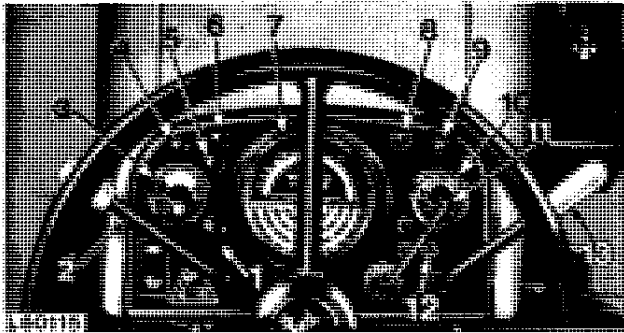


L 60006



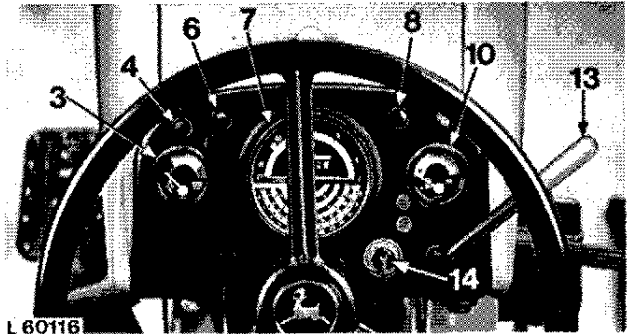
Controls and Instruments

"BILUX" LIGHTING SYSTEM



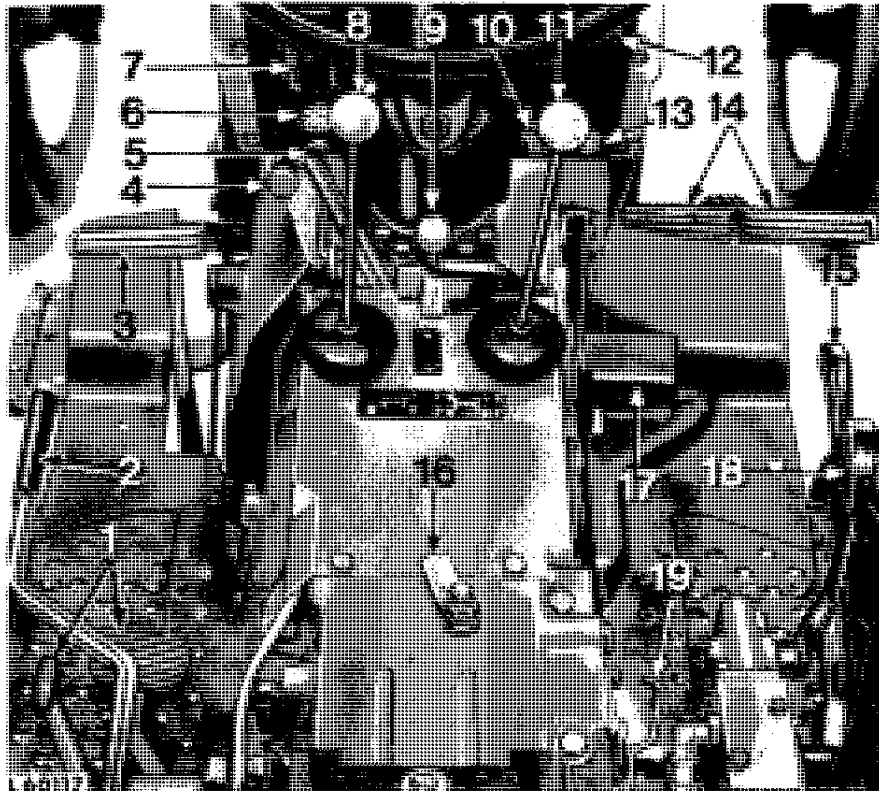
- 1 = Hazard warning light switch
- 2 = HIGH-LOW shift lever
- 3 = Coolant temperature gauge
- 4 = Air cleaner indicator light
- 5 = Transmission oil pressure indicator light

"SEALED-BEAM" LIGHTING SYSTEM



- 6 = Alternator indicator light
- 7 = Speed-hour meter
- 8 = Engine oil pressure indicator light
- 9 = Full beam indicator light
- 10 = Fuel gauge

- 11 = Turn signal switch
- 12 = Turn signal indicator lights
- 13 = Hand throttle
- 14 = Hazard warning light and rear worklight switch



- 1 = Differential lock (lever and pedal)
- 2 = Handbrake lever
- 3 = Clutch pedal
- 4 = Engine shut-off knob
- 5 = Starter button

- 6 = Main switch
- 7 = Fuse box
- 8 = Range shift lever
- 9 = PTO control lever
- 10 = Socket for handlamp

- 11 = Gear shift lever
- 12 = Horn button
- 13 = Cold weather starting aid (Thermostart)
- 14 = Brake pedals

- 15 = Rockshaft control lever
- 16 = Rate-of-drop lever
- 17 = Foot throttle
- 18 = Selective control valve lever
- 19 = Rockshaft selector lever

INSTRUMENTS

Control Lights

Transmission oil pressure



1 56 967

(only with HIGH-LOW unit)

Alternator



1 56 968

Engine oil pressure



1 56 966

The above control lights should light up as soon as main switch is moved to position "1". If this is not the case, a burnt-out bulb or blown fuse may be the cause. Replace defective bulb or fuse.

The control lights should go out as soon as the engine is running and the engine speed has been raised. If this is not the case or if a light goes on during operation, immediately shut off engine and remedy the fault.

If **transmission oil pressure indicator light** goes on during tractor operation, check oil level and condition of transmission oil filter.

If **alternator indicator light** goes on during engine operation, the alternator is not charging. Check for loose alternator connections, slackness of V-belt or defective alternator.

If **engine oil pressure indicator light** goes on during engine operation, check oil level and condition of engine oil filter. (In this case transmission oil pressure control light also goes on).



1 56 965

Air cleaner indicator light

If air cleaner indicator light goes on, clean air filter element or replace element after it has been cleaned six times.

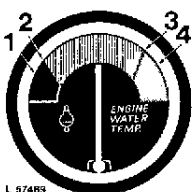


1 56 969

Full-beam indicator light

(not with sealed beam lights)

As soon as full-beam is turned on, the blue full-beam indicator light will go on. Dim the lights in case of oncoming traffic or when driving through populated areas.



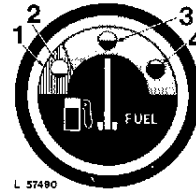
L 57489

Coolant temperature gauge

- 1 = 38° C (100° F)
- 2 = 57° C (135° F)
- 3 = 107° C (224° F)
- 4 = 116° C (240° F) orange warning zone

If the gauge needle is in the orange warning zone, the engine is overheating and must be stopped at once. Check coolant level in radiator and check cooling system for leaks.

Fuel Gauge



L 57490

- 1 = Orange warning zone
- 2 = Empty tank
- 3 = Half-full tank
- 4 = Full tank

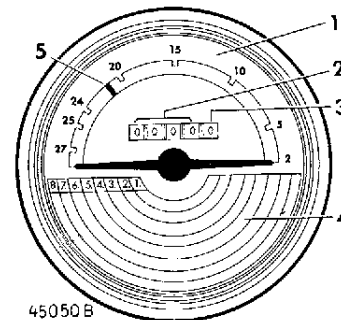
The fuel gauge shows the amount of fuel in tank, from "empty" via "half-full" to "full".

Refill tank as soon as needle points to orange zone.

Never run fuel tank completely dry!

Speed-hour meter

The speed-hour meter facilitates the economical use of the tractor under all operating conditions. It also facilitates choosing the right gear.



45050 B

The speed-hour meter shows the following:

- 1 = **Engine speed** on the upper half of the dial. The figure shown multiplied by 100 indicates the actual number of engine revolutions.
- 2 = **Hours of operation** in full hours.
- 3 = **Hours of operation** in tenths of hours.
- The hour meter facilitates close observation of the proper service intervals.
- 4 = The **tractor speed** for the gear engaged.
- 5 = **PTO operation**. The green mark shows the engine speed required for powershaft operation.

Thank you so much for reading.
Please click the “Buy Now!”
button below to download the
complete manual.



After you pay.

You can download the most
perfect and complete manual in
the world immediately.

Our support email:

ebooklibonline@outlook.com