



# 2140 Tractor



JOHN DEERE

## OPERATORS MANUAL

2140  
Tractor

OML34755 G0 English

**John Deere Werke Mannheim  
John Deere Ibérica S.A. Getafe  
OML34755 G0**

LITHO IN U.S.A.  
ENGLISH





## To the Purchaser

---

We appreciate the confidence you have shown in John Deere and your John Deere dealer for the purchase of this equipment.

We want you to have the best performance from your new machine. To accomplish this, your dealer will perform a Predelivery Inspection and will familiarize you with the proper and safe operation of this machine.

After the machine has operated the first 50 to 100 hours, you should contact your dealer and arrange an appropriate date at which the After-Sale Inspection will be performed. This inspection should not be done later than 100 operating hours after the machine has been delivered to you. It will be performed most effectively in the workshop of your dealer.

Following this page you will find a Predelivery Inspection check list, while at the end of this manual you will find the After-Sale Inspection check list.

These lists will be completed by your dealer when the inspections are being performed. He will then forward the original and one copy of each inspection to the John Deere Sales Branch Service Department, retaining the second copy for his files. The dealer will confirm completion of these in-

spections on that portion of the check list which remains in this manual.

The After-Sale Inspection is an important prerequisite to assure best performance of your new machine. For this reason you should not miss to make proper arrangements with your dealer to get this service done at the proper time.



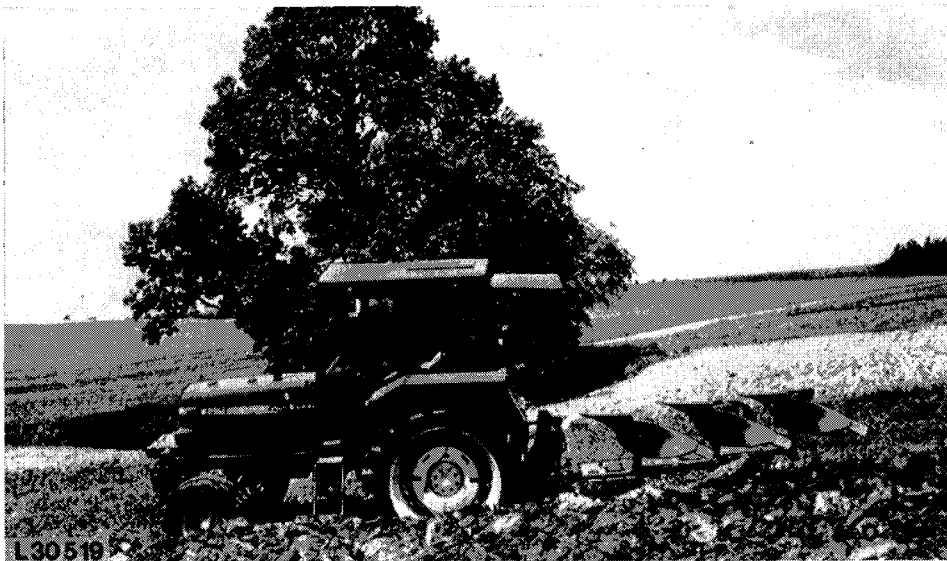
This safety alert symbol indicates important safety messages in this manual. When you see this symbol, be alert to the possibility of personal injury and carefully read the message that follows.

To assure safe operation of this machine, read the Safety Rules on the first pages of this manual.

**IMPORTANT!** Your operator's manual contains the international standardized SI metric measurement system.

Right-hand and left-hand sides of this machine are determined by facing in the direction of forward travel.

Record the serial numbers of your machine as shown on one of the last pages of this manual and provide this information to your dealer when ordering spare parts.



All information, illustrations, and specifications contained in this operator's manual are based on the latest information available at the time of publication. The right is reserved to make changes at any time without notice.



# Contents

---

	Page		Page
Safety rules . . . . .	2	Tractor storage . . . . .	102
Controls and instruments . . . . .	5	Trouble shooting . . . . .	103
Operation . . . . .	8	Specifications . . . . .	106
Fuel and lubricants . . . . .	67	Serial numbers . . . . .	111
Lubrication and periodic service . . . . .	68	Index . . . . .	112
Service . . . . .	93		



L16916 A

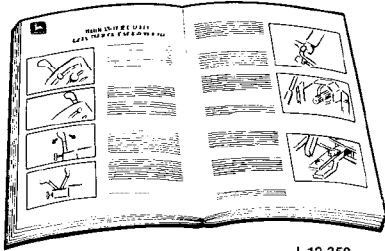


L16917



# Safety Rules

---



L 12 358

Do not put this **operator's manual** away unread. Read the manual carefully, regardless of your previous experience. Allow yourself this time, it will save you time and labour later on.

Always observe local **traffic regulations** when driving the tractor on public roads.

Become familiar with all **controls, indicators, warning lights, and warning plates** before operating the tractor.

Allow only trained operators to **use or adjust** the tractor.

Make sure that all **safety guards and shields** supplied with your tractor are serviceable and installed before operating tractor.

Never operate the tractor in a **closed building**. Danger of asphyxiation.

Always maintain **brakes** in excellent condition and adjustment. Brake pedals must be coupled together by means of the pedal coupler when driving on public roads.

Make sure that the tractor can be **safely steered and operated**, especially when driving up a steep hillside or down a slope.

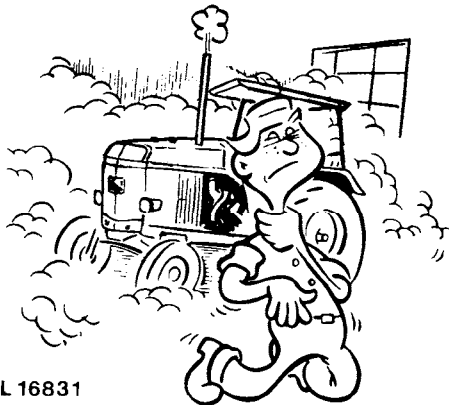
Do not operate the tractor without a **roll guard**.

A protective four-post roll-guard is incorporated in each operator's cab. On this construction, as well as on tractor equipped with a roll-guard only, do not, under any circumstances, modify structural members of roll-guard by welding on additional parts, drilling holes etc. Disregarding this instruction can affect the rigidity of the roll-guard and therefore the operator's safety cannot be guaranteed.

The operator should be sure to have sufficient **visibility**.

To make sure that the tractor can be safely steered with rear-mounted implements, install **front weights**.

**Drive slowly** over rough ground or on hillsides and reduce speed when turning.



L 16831



L 16838

Always keep tractor in gear when driving down steep hills or inclines.

When driving out of a ditch, gully, or up a steep slope, engage the clutch slowly. Be prepared to declutch promptly if the front wheels rise off the ground. Use the same care if rear wheels mire in soft ground or drop into a hole. Back the tractor out of these spots if at all possible.

The power demands of attached or drawn implements should be well within the tractor's power range.

Trailers attached to the tractor should be equipped with a safely operating brake and lighting system.

Install additional red tail lights on rear-mounted implements covering the tractor tail lights or if the implement protrudes laterally.

Do not leave equipment raised when tractor is stopped. Always lower it to the ground.

Before starting engine make sure rockshaft control lever is in "equipment lowered" position.

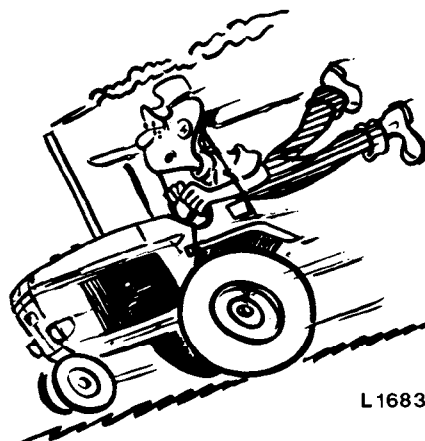
After having disengaged the PTO, driven equipment does not become stationary immediately. Do not attempt to make adjustments or repairs while tractor is running unless specifically recommended. Disengage PTO, place transmission in park or apply handbrake, and shut off tractor engine before working on equipment.

Do not wear loose clothing near moving parts.

If a PTO-driven implement is attached, make sure powershaft shields are installed.

Chock rear wheel when parking on a slope.

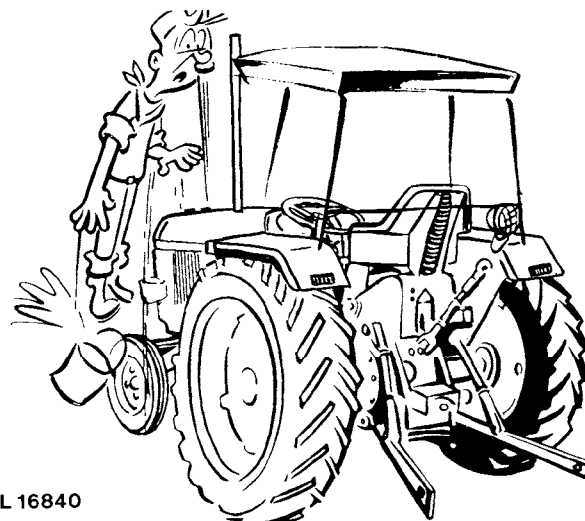
Add coolant only with engine stopped or idling. Turn radiator cap slowly to relieve pressure before removing.



L 16833



L 16832



L 16840

Thank you so much for reading.  
Please click the “Buy Now!”  
button below to download the  
complete manual.



After you pay.

You can download the most  
perfect and complete manual in  
the world immediately.

Our support email:

[ebooklibonline@outlook.com](mailto:ebooklibonline@outlook.com)