

**6675 and 7775
Skid Steer
Loaders**
(Serial No. 010001 –)

**OPERATOR'S
MANUAL**

**John Deere
Lawn & Grounds Care Division
OMM122343 B4**

Export Version
Litho in U.S.A
English

INTRODUCTION

READ THIS MANUAL carefully to learn how to operate and service your machine correctly. Failure to do so could result in personal injury or equipment damage. This manual and safety signs on your machine may also be available in other languages (see your John Deere dealer to order).

THIS MANUAL SHOULD BE CONSIDERED a permanent part of your machine and should remain with the machine when you sell it.

MEASUREMENTS in this manual are given in both metric and customary U.S. unit equivalents. Use only correct replacement parts and fasteners. Metric and inch fasteners may require a specific metric or inch wrench.

RIGHT-HAND AND LEFT-HAND sides are determined by facing the direction of forward travel.

BEFORE DELIVERING THIS MACHINE, your dealer performed a predelivery inspection to ensure best performance.

THIS SKID STEER LOADER IS DESIGNED SOLELY for use in customary agricultural and forestry operations, for park and amenity area maintenance, and for winter work or similar operation (“INTENDED USE”). Use in any other way is considered as contrary to the intended use.

The manufacturer accepts no liability for damage or injury resulting from this misuse, and these risks must be borne solely by the user. Compliance with and strict adherence to the conditions of operation, service and repair as specified by the manufacturer also constitute essential elements for the intended use.

INTRODUCTION

THIS SKID STEER LOADER SHOULD BE OPERATED, serviced and repaired only by persons familiar with all its particular characteristics and acquainted with the relevant safety rules (accident prevention). The accident prevention regulations, all other generally recognized regulations on safety and occupational medicine and the road traffic regulations must be observed at all times.

Any arbitrary modifications carried out on this skid steer loader will relieve the manufacturer of all liability for any resulting damage or injury.

Date of Purchase:

Dealer Name:

Phone:



INTRODUCTION

WRITE PRODUCT IDENTIFICATION NUMBERS (P.I.N.) in the space provided below. Accurately record all the numbers to help in tracing the machine should it be stolen. Your dealer also needs these numbers when you order parts. File the identification numbers in a secure place off the machine.

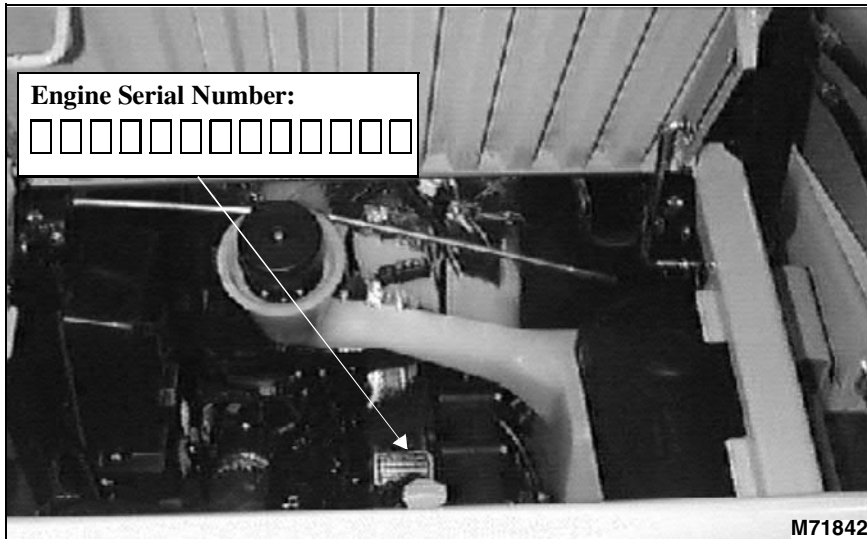
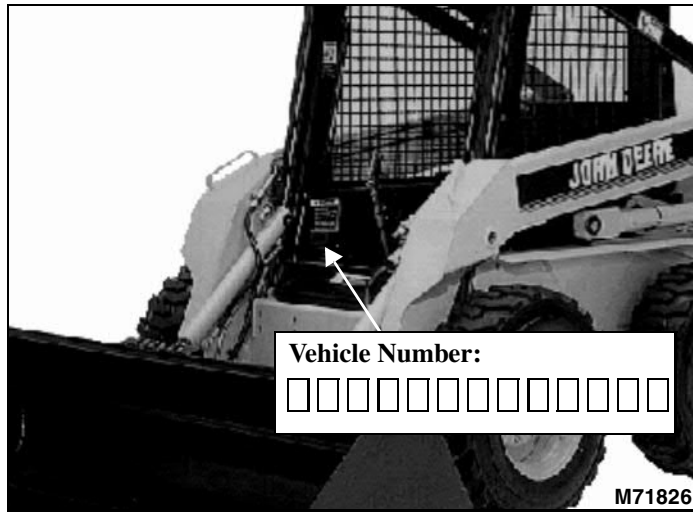


TABLE OF CONTENTS

| | Page |
|---|------|
| Safety | |
| Pictorial Safety Signs..... | 1 |
| Machine Safety Labels | 1 |
| Controls | |
| Hand Controls..... | 5 |
| Foot Controls | 6 |
| Overhead Panel Controls | 6 |
| Operating | |
| Safety: | |
| Operator Training Required..... | 8 |
| Use Seat Belt Properly | 8 |
| Use Handholds and Steps | 8 |
| Operate Safely..... | 9 |
| Protect Children and Prevent Accidents | 10 |
| Keep Riders Off | 10 |
| Avoid Tipping | 11 |
| Park Safely | 11 |
| Wear Appropriate Clothing | 12 |
| Check Wheel Bolts | 12 |
| Transport Safely | 12 |
| Adjustments: | |
| Seat | 13 |
| Driving: | |
| Entering and Exiting Loader | 14 |
| Using Fuel Shut-off Valve | 15 |
| Using the Park Brake..... | 15 |
| Using Service/Run Switch | 15 |
| Using Electronic Instrument Monitor (EIM) | 16 |
| Using Select Switches | 22 |
| Using Cold Start Button | 24 |
| Starting the Engine | 25 |
| Stopping the Engine | 28 |

Thank you so much for reading.
Please click the “Buy Now!”
button below to download the
complete manual.



After you pay.

You can download the most
perfect and complete manual in
the world immediately.

Our support email:

ebooklibonline@outlook.com