

F1145 Front Mower

(Serial No. 10001 -)

OPERATOR'S MANUAL

**John Deere
Lawn & Grounds Care Division
OMM115813 E3**

(This manual replaces OMM115813 H2)

North American Version

**Litho in U.S.A
English**

INTRODUCTION

THANK YOU for purchasing a John Deere product.

Read this manual and your attachment manuals thoroughly. Failure to do so could result in personal injury or equipment damage.



This manual should be considered a permanent part of your machine and should remain with the machine when you sell it.

Measurements in this manual are U.S. customary units and their metric equivalents. RIGHT-HAND and LEFT-HAND sides are determined by facing in the direction the machine will travel when going forward.

Product warranty is provided as part of John Deere's support program for customers who operate and maintain their equipment as described in this manual. The product warranty is explained on the warranty certificate you received from your dealer.

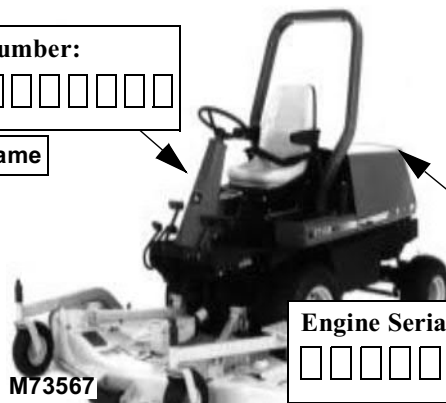
Record identification numbers below. Be sure to record all the numbers to help in tracing the machine if it is stolen. You also need to give these numbers to your dealer when you order parts.

Date of Purchase: _____

Dealer Name: _____	Phone: _____
------------------------------	------------------------

Vehicle Serial Number: □ □ □ □ □ □ □ □ □ □ □ □ □ □ □ □

Right Side of Frame



Engine Serial Number: □ □ □ □ □ □ □ □ □ □ □ □ □ □ □ □

Top of Engine

TABLE OF CONTENTS

	Page		Page
Safety Signs		Using Weights:	
Safety-Alert Symbol	1	Required Weights	
Machine Safety Labels	1	And Tire Fluid	26
Certification Labels	3	Transporting:	
Controls		Transporting Front	
Learning Controls	4	Mower On A Trailer	27
Operating the Machine		Pushing Front Mower	28
Operate Safely	6	Using Drawbar Hitch	
Adjustments:		(Optional)	28
Seat	12	Replacement Parts	
Checking Toe-In	13	John Deere Service	
Adjusting Toe-In	13	Parts	30
Adjusting Turn Brake	14	Service Safety	
Driving:		Practice Safe	
Using Park Brake	14	Maintenance	31
Indicator Lights		Wear Appropriate	
And Gauges	15	Clothing	32
Starting The Engine	16	Stay Clear of Rotating	
Stopping The Engine	18	Drivelines	32
Using Travel Controls	18	Handling Waste Product	
Using Cruise Control	19	and Chemicals	32
Using Differential Lock	19	Avoid High Pressure	
Using PTO		Fluids	33
(Power Take-Off)	20		
High-Low Control	21		
Moving Front Mower With			
Engine Off	22		
Lift Lever	22		
Four Wheel			
Drive Control	23		
Turn Brakes	23		
Daily Operating			
Checklist	24		
Testing Safety System.....	24		

All information, illustrations and specifications in this manual are based on the latest information at the time of publication. The right is reserved to make changes at any time without notice.

COPYRIGHT© 1993
John Deere Horicon Works
All rights reserved
Previous Edition
Copyright© 1992

TABLE OF CONTENTS

	Page		Page
Service Intervals		Check Transmission/ Hydraulic Oil Level	50
Service Interval Chart.....	34	Change Transmission Oil And Filter	51
Service-Engine		MRWD Oil	52
Engine Oil	36	Check MRWD Oil Level	53
Checking Engine Oil Level	36	Change MRWD Oil	53
Changing Engine Oil & Filter	37	Lubricate U-Joints	54
Check Air Intake Screen	38	Service-Steering and Brakes	
Check Air Restriction Indicator	38	Lubricate Pivot Points	55
Change Air Cleaner Elements	39	Lubricate Steering Cylinder And Tie Rod	56
Changing Secondary Element	40	Service-Electric	
Bleeding Fuel System	41	Cleaning or Replacing Battery	57
Service Cooling System Safely	43	Checking Battery Electrolyte Level	58
Draining Cooling System	44	Charging the Battery Safely	59
Flushing Cooling System	45	Charging Rates	59
Filling Cooling System	46	Using Booster Battery	60
Replace/Adjust Fan Belt	46	Replace Fuse	61
Replace/Adjust Alternator Belt	47	Replace Indicator Bulb	61
Fuel Filter & Sediment Bowl	47	John Deere Battery Warranty.....	62
Service-Transmission/ Transaxle/U-Joint		Service-Miscellaneous	
Transmission Neutral Adjustment	48	Checking Tire Pressure ...	63
		John Deere Tire Warranty	64
		Refueling Machine	64
		Before Filling Fuel Tank ..	65
		Filling Fuel Tank	65
		Fuel And Containers	66

TABLE OF CONTENTS

	Page		Page
Tighten Wheel Bolts & Other Hardware	67	Recommended Lubricants	85
Troubleshooting		John Deere Service Literature	
Engine	68	Order Form	86
Front Mower	71		
Electrical System	71		
Brakes And Steering	73		
Storing Vehicle			
Storing Safety	74		
Storing Front Mower	74		
Removing Front Mower From Storage	75		
Assembly			
Activate Battery	76		
Install The Steering Wheel	78		
Install Rops	78		
Installing Seat	79		
Checking Tire Pressure ..	80		
Install Wheels (Rear Axle) and (Front Axle)	81		
Specifications			
Engine.....	82		
Fuel System.....	82		
Drive Train	83		
Steering	83		
Power Take Off.....	83		
Implement Lift	84		
Electical	84		
Hydraulic System.....	84		
Noise Level	84		
Tires.....	84		
Dimensions	85		

Thank you so much for reading.
Please click the “Buy Now!”
button below to download the
complete manual.



After you pay.

You can download the most
perfect and complete manual in
the world immediately.

Our support email:

ebooklibonline@outlook.com