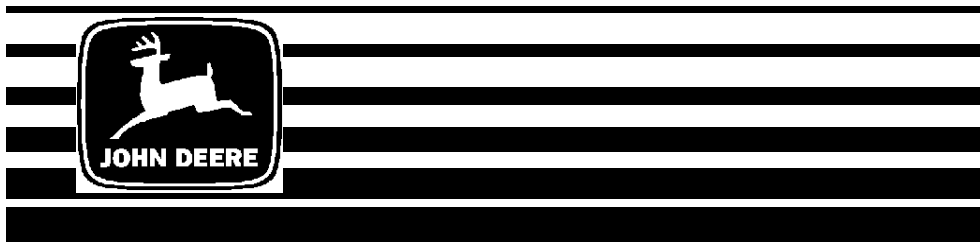


54-Inch Front Blade For F1145 Front Mowers

(Serial No. 010001 –)



OPERATOR'S MANUAL

**John Deere
Lawn & Grounds Care Division
OMM124009F5**

**North American Version
Litho in U.S.A
English**

INTRODUCTION

THANK YOU for purchasing a John Deere product.

Read this manual and your vehicle manual thoroughly. Failure to do so could result in personal injury or equipment damage.



This manual should be considered a permanent part of your machine and should remain with the machine when you sell it.

Measurements in this manual are metric units and their U.S. customary equivalents. RIGHT-HAND and LEFT-HAND sides are determined by facing in the direction the machine will travel when going forward.

Product warranty is provided as part of John Deere's support program for customers who operate and maintain their equipment as described in this manual. The product warranty is explained on the warranty certificate you received from your dealer.

Record identification numbers below. Be sure to record all the numbers to help in tracing the machine if it is stolen. You also need to give these numbers to your dealer when you order parts.

Date of Purchase:

Dealer Name:

Phone:

Serial Number:

□ □ □ □ □ □ □ □ □ □ □ □ □ □ □ □

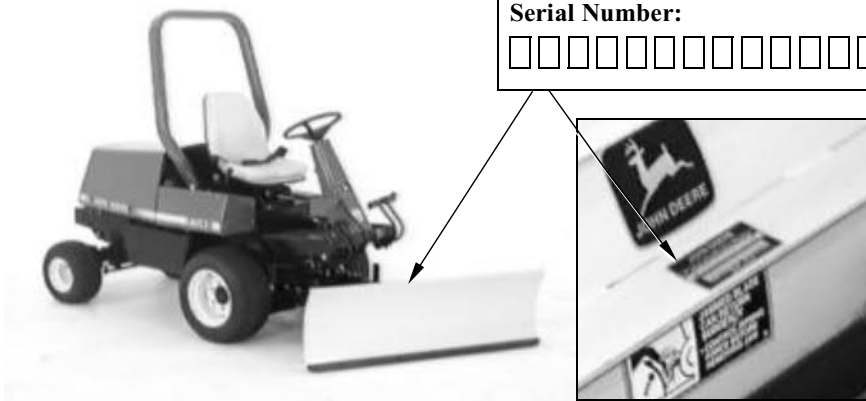


TABLE OF CONTENTS

	Page
Safety Signs	
Machine Safety Labels	1
Preparing The Vehicle	
Install Auxiliary Hydraulic Kit.....	2
Ballasting Requirements.....	2
Installing	
Park Vehicle Safely.....	3
Avoid High Pressure Fluids	3
Installing Blade	4
Connect Hydraulic Hoses	6
Removing	
Park Vehicle Safely.....	7
Avoid High Pressure Fluids	7
Removing The Blade	8
Operating	
Operate Safely.....	10
Operating Tips	11
Wear Appropriate Clothing	11
Before Operating Blade	12
Adjusting Skid Shoes.....	12
Raising and Lowering Blade	13
Angling Blade.....	13
Removing Objects Between Blade And Mounting Bracket	14
Operating Blade.....	15

TABLE OF CONTENTS

	Page
Service Parts	
Service Parts.....	17
Service Machine Safely	
Practice Safe Maintenance	18
Wear Appropriate Clothing.....	19
Avoid High Pressure Fluids.....	19
Troubleshooting	
Using Troubleshooting Chart	20
Storing	
Storing Machine Safely	22
Assembly	
Identify Parts	23
Bag of Parts	24
Install Skid Shoes.....	25
Install Pivot Frame Bracket.....	25
Install Blade Lift Arms	27
Install Cylinder.....	28
Specifications	
Blade Specifications.....	29
John Deere Service Literature	
Order Form.....	31

Thank you so much for reading.
Please click the “Buy Now!”
button below to download the
complete manual.



After you pay.

You can download the most
perfect and complete manual in
the world immediately.

Our support email:

ebooklibonline@outlook.com