

JOHN DEERE
WORLDWIDE COMMERCIAL & CONSUMER
EQUIPMENT DIVISION

Lawn Tractors
LTR155 and LTR166

OPERATOR'S MANUAL



OMM142397 J9

Export Version
Litho in U.S.A.

INTRODUCTION

Read This Manual

READ THIS MANUAL carefully to learn how to operate and service your machine correctly. Failure to do so could result in personal injury or equipment damage. This manual and safety signs on your machine may also be available in other languages (see your John Deere dealer to order).

THIS MANUAL SHOULD BE CONSIDERED a permanent part of your machine and should remain with the machine when you sell it.

MEASUREMENTS in this manual are given in both metric and customary U.S. unit equivalents. Use only correct replacement parts and fasteners. Metric and inch fasteners may require a specific metric or inch wrench.

RIGHT-HAND AND LEFT-HAND sides are determined by facing the direction of forward travel.

SETTING FUEL DELIVERY BEYOND PUBLISHED factory specifications or otherwise overpowering will result in loss of warranty protection for this machine.

BEFORE DELIVERING THIS MACHINE, your dealer performed a pre-delivery inspection to ensure best performance.

THIS TRACTOR AND GRASS COLLECTOR ARE DESIGNED SOLELY for use in customary lawn mowing operations and collection of grass, for park and amenity area maintenance and for winter work or similar operation ("INTENDED USE"). Use in any other way is considered as contrary to the intended use.

The manufacturer accepts no liability for damage or injury resulting from this misuse, and these risks must be borne solely by the user. Compliance with and strict adherence to the conditions of operation, service and repair as specified by the manufacturer also constitute essential elements for the intended use.

THIS TRACTOR AND GRASS COLLECTOR SHOULD BE OPERATED, serviced and repaired only by persons familiar with all its particular characteristics and acquainted with the relevant safety rules (accident prevention). The accident prevention regulations, all other generally recognized regulations on safety and occupational medicine and the road traffic regulations must be observed at all times.

Any arbitrary modifications carried out on this tractor will relieve the manufacturer of all liability for any resulting damage or injury.

PRODUCT IDENTIFICATION

Record Identification Numbers

Lawn Tractors

LTR155 & LTR166 PIN No. (020001 -)

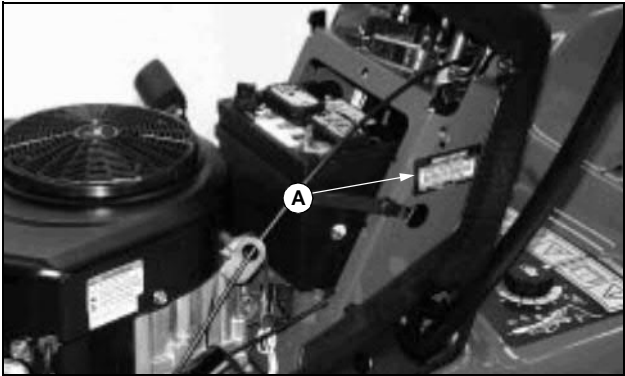
If you need to contact an Authorized Service Center for information on servicing, always provide the product model and serial number.

You will need to locate the serial number for the machine and for the engine. Record the information in the spaces provided below.

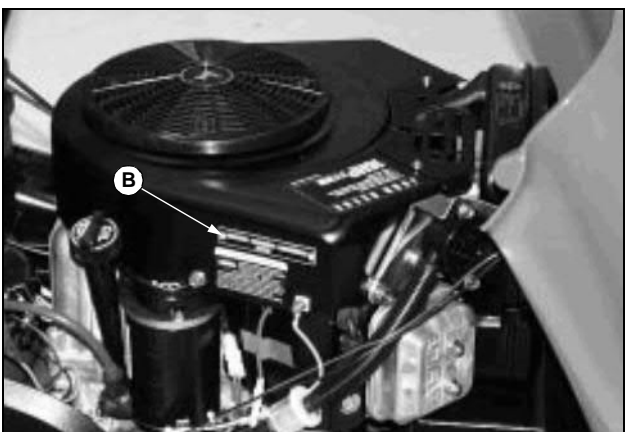
DATE OF PURCHASE:

DEALER NAME:

DEALER PHONE:



PRODUCT IDENTIFICATION NUMBER (A):



ENGINE SERIAL NUMBER (B):

TABLE OF CONTENTS

Contents

Safety	1
Operating	9
Replacement Parts	22
Service Interval Chart	23
Service Lubrication	24
Service Engine	25
Service Mower and Grass Collector	31
Service Electrical	44
Service Miscellaneous	47
Troubleshooting	49
Storage	54
Assembly	56
Specifications	60
Index	67

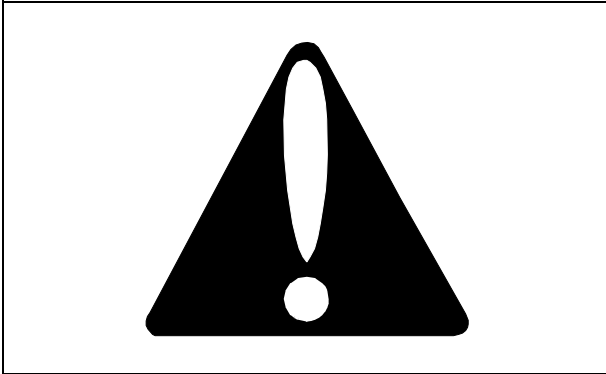
All information, illustrations and specifications in this manual are based on the latest information at the time of publication. The right is reserved to make changes at any time without notice.

COPYRIGHT© 1999
Deere & Co.
John Deere Worldwide Commercial and
Consumer Equipment Division
Horicon, WI
All rights reserved
Previous Editions
COPYRIGHT© 1998

OMm142397 J9 - English

SAFETY

Pictorial Safety Signs



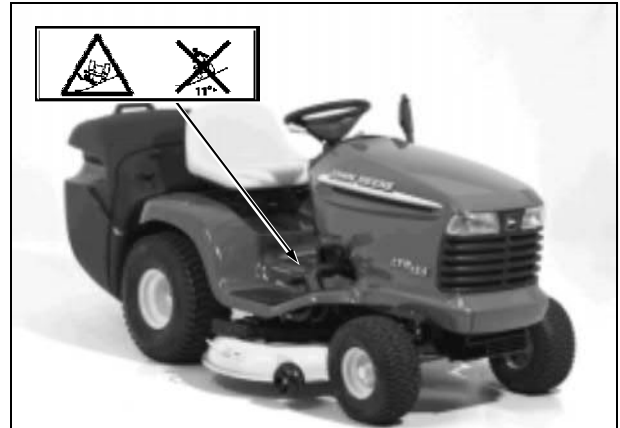
At several important places on this machine safety signs are affixed intended to signify potential danger. The hazard is identified by a pictorial in a warning triangle T. An adjacent pictorial provides information how to avoid personal injury. These safety signs, their placement on the machine and a brief explanatory text are shown in this Safety Signs section.

Read Operators Manual



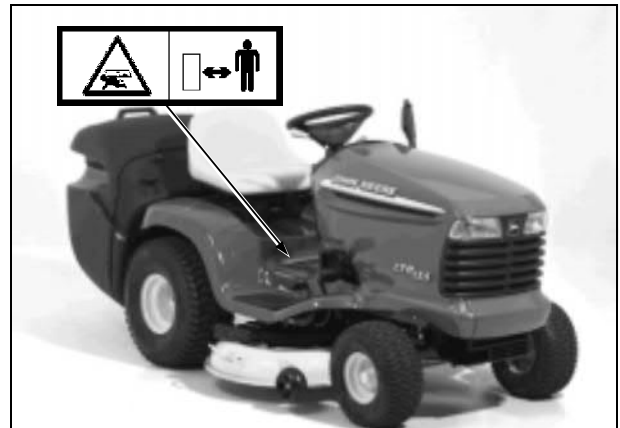
This operator's manual contains important information necessary for safe machine operation. Observe all safety rules to avoid accidents.

Avoid Injury From Tipping



DO NOT drive where tractor could slip or tip. DO NOT drive on a slope with more than a 11° (19%) incline.

Keep Children Away From Mower



Make sure that children stay clear of mower at all times when the engine is running.

Thank you so much for reading.
Please click the “Buy Now!”
button below to download the
complete manual.



After you pay.

You can download the most
perfect and complete manual in
the world immediately.

Our support email:

ebooklibonline@outlook.com