

299 TWO-ROW COTTON PICKER EFFECTIVE SERIAL NOS. 299L-101 AND 299H-101



JOHN DEERE

OPERATORS MANUAL

**299 TWO-ROW COTTON PICKER
EFFECTIVE SERIAL NOS. 299L-101 AND
299H-101**

OMN159048 B5 English

OMN159048 B5

**LITHO IN THE U.S.A.
ENGLISH**





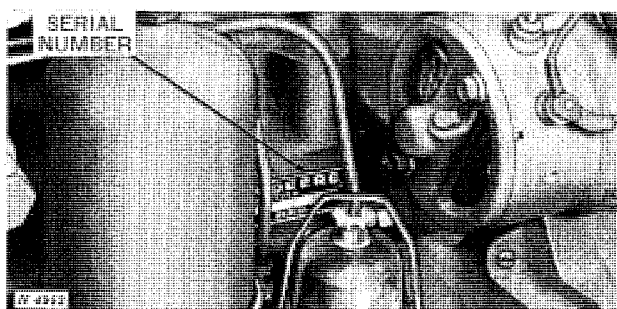
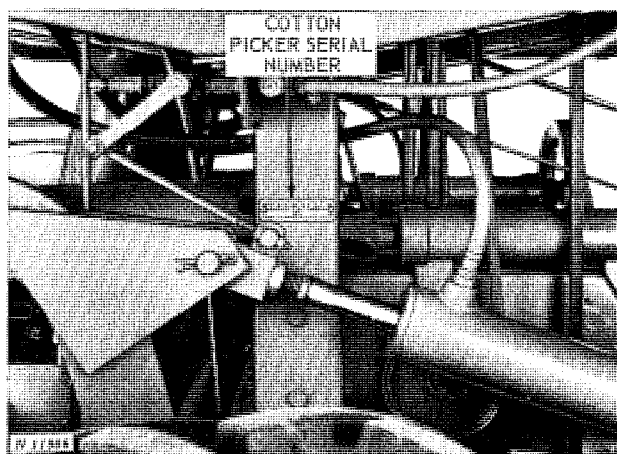
TO THE PURCHASER

Your new cotton picker was built to rigid manufacturing standards. Material and workmanship are the best. However, the machine will serve you only in direct proportion to the care you give it. How long it will last and continue its good work is a matter entirely in your hands.

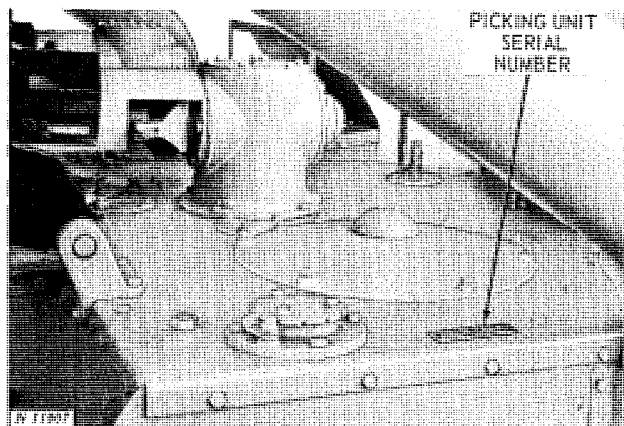
The way you operate your cotton picker and the care you give it have much to do with the service and satisfaction you will get from it. This manual has been carefully prepared and illustrated to show you what to do and when to do it. It explains the adjustments that are built into the machine and gives instructions on when and how to make these adjustments.

If you find you need information not covered in this manual or if your cotton picker requires special servicing, take advantage of the facilities offered by your John Deere dealer. He has trained mechanics, who are kept informed on the best methods of servicing and can give you prompt, "know-how" service in the field or in his shop.

Location References. "Right" and "Left," "Front" and "Rear" refer to the operator's "Right" or "Left" and "Front" or "Rear" when facing the same direction machine is headed or traveling.



SERIAL NUMBERS



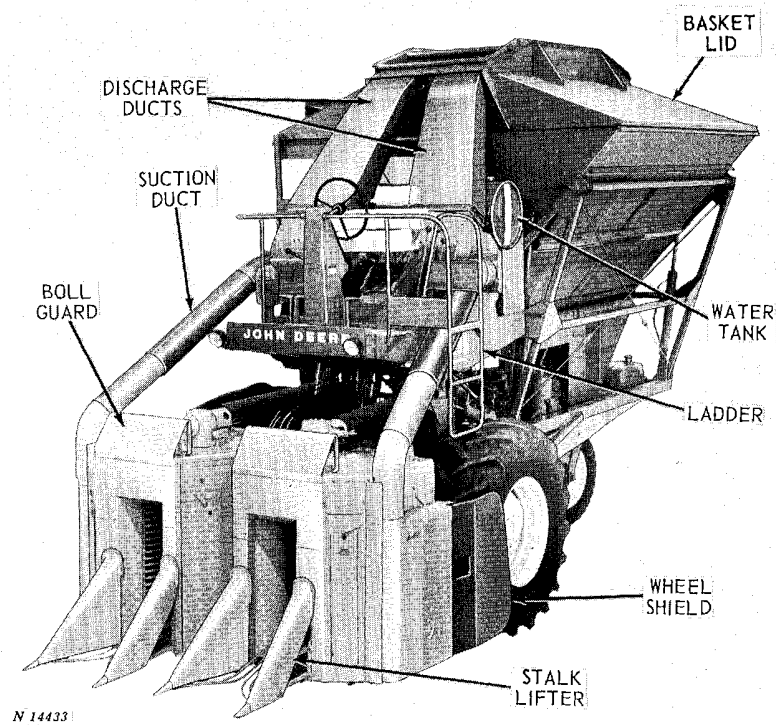
The cotton picker serial number is on a plate located on the left-hand platform support. The engine serial number is on a plate located on the left-hand side of the engine block. The picking unit serial numbers are on plates located on the top outer side of each unit. Write these serial numbers in the space provided below, for handy reference later.

PICKER SERIAL NO.
 ENGINE SERIAL NO.
 R.H. PICKING UNIT SERIAL NO.
 L.H. PICKING UNIT SERIAL NO.
 DATE PURCHASED

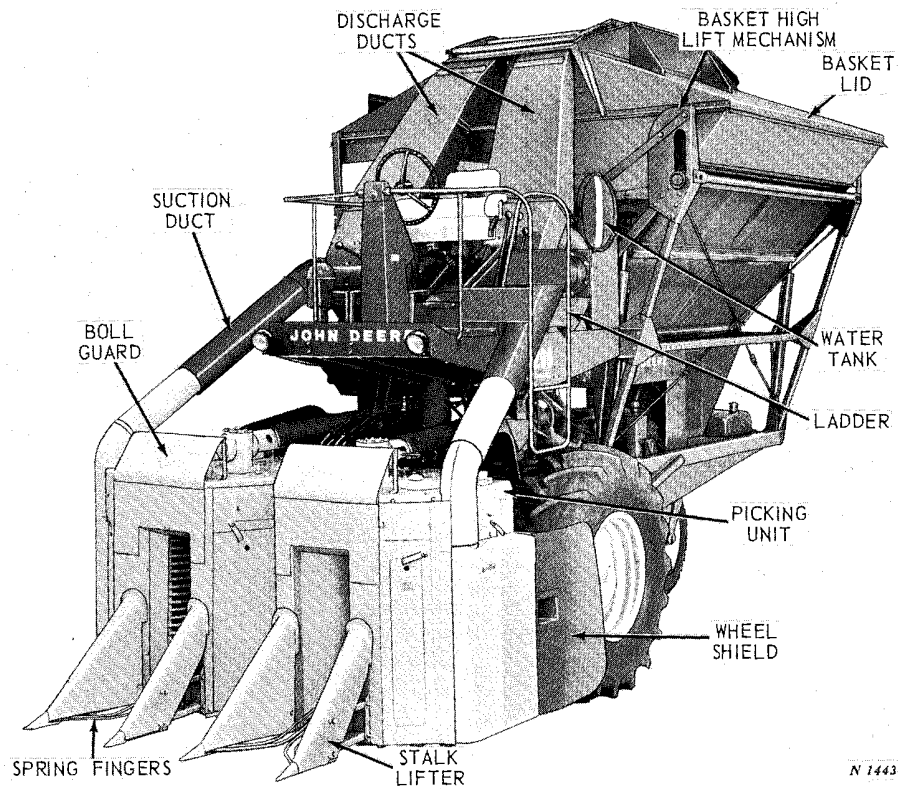


CONTENTS

	Page
Specifications	3-5
Description	6-8
Controls and Instruments	9-12
Operation	13-27
Operating Adjustments	28-42
Fuels and Lubricants	43-47
Lubrication and Periodic Service	48-70
Trouble Shooting	71-88
Service	89-98
Attachments	99-100
Index	101-103

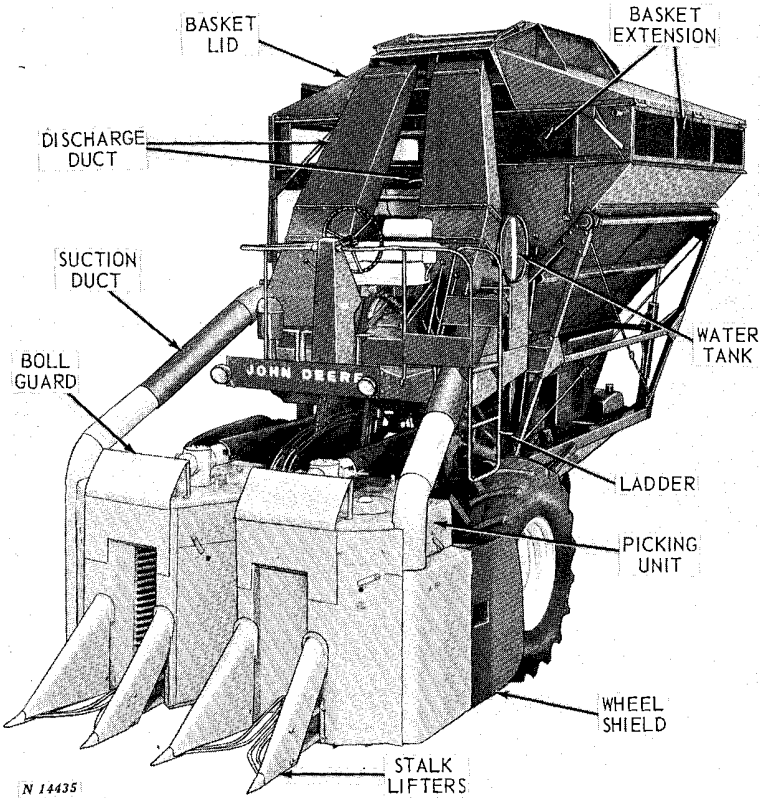


John Deere 299 Cotton Picker with Regular Basket



N 14434

John Deere 299 Cotton Picker with High Lift Basket



N 14435

John Deere 299 Cotton Picker with Basket Extensions



SPECIFICATIONS

ROW WIDTH 38 or 40-inch rows

GROUND SPEEDS (Full Throttle)

Picking Speeds

1st Gear 2.0 mph
2nd Gear 2.6 mph
3rd Gear 3.1 mph

Transport Speeds

4th Gear 8.1 mph
5th Gear 10.4 mph
6th Gear 12.3 mph
Reverse Speed 3.2 mph

CAPACITIES

Cotton Basket-Regular 412 cu. ft.
(2100 lbs. seed cotton*)

Cotton Basket-with Extensions 524 cu. ft.
(2600 lbs. seed cotton*)

Fuel Tank

Gasoline and Diesel 33 U.S. gal.
LP-Gas (85% Full) 41 U.S. gal.
Water Tank 64 U.S. gal.

Cooling System

Gasoline 6½ U.S. gal.
LP-Gas 7 U.S. gal.
Diesel 6 U.S. gal.

Engine Crankcase (Including Oil

Filter 7 U.S. qt.

Hydraulic System

With Regular Lift 15 U.S. qt.
With High Lift 17 U.S. qt.

SHIPPING WEIGHT (With Reg. Lift & Gasoline Engine)

High Drum Picker - approx. 12,990 lbs.
Low Drum Picker - approx. 12,390 lbs.

**These figures are based on approximately five pounds of seed cotton per cubic foot. The weight of seed cotton varies depending upon area and crop conditions.*

TIRES

Front Drive Wheels 18.4 x 26, 10-ply rating, Bar, Low Profile, or Cane and Rice Tread
Rear Guide Wheel 11.00 x 16, 8-ply rating, Multi-Rib, or Triple Rib

ENGINE (Gasoline and LP-Gas)

Make John Deere

Model

Gasoline NB217G

LP-Gas NB217L

No. of Cylinders 6

Bore 3-5/8 in.

Stroke 3-1/2 in.

Displacement 217 cu. in.

Horsepower

Gasoline 77 hp

LP-Gas 77 hp

Tappet Clearance

Intake 0.012 in. (cold)

Exhaust 0.018 in. (cold)

Valve location Valve-in-head

Firing Order 1-5-3-6-2-4

Engine Speeds

Fast Idle (no load) 2600 rpm

Rated (under field load) 2500 rpm

Slow Idle 600 rpm

Fuel System

Carburetor .. Marvel-Schebler (Single up Draft)

Type of Fuel.. Regular Gasoline or LP-Gas

Oil Filter Spin-on Full Flow

Air Cleaner Dry-type filter with pre-cleaner screen

Governor..... Pierce (centrifugal fly-weight type)

Electrical system

Type . . . Battery, 12-volt with distributor
 Battery. . . . One 12-volt, 91 ampere-hour,
 SAE 9H9 battery

Ignition System

Spark Plug Gap
 Gasoline engine..... 0.025 in.
 LP-Gas engine..... 0.015 in.

Distributor Point Gap

Delco 0.016 in.
 Prestolite..... 0.020 in.

ENGINE (Diesel)

Make John Deere NA248D
 No. of Cylinders 6
 Bore 3-7/8 in.
 Stroke..... 3-1/2 in.
 Displacement 248 cu. in.
 Horsepower 80 hp
 Compression ratio..... 19 to 1
 Tappet clearance

Intake 0.012 in. (cold)
 Exhaust 0.018 in. (cold)

Valve location..... valve-in-head

Firing order 1-5-3-6-2-4

Engine speeds

Fast idle (no load) 2560 rpm
 Rated (under field load) 2500 rpm
 Slow idle (no load) 800 rpm

Governor Integral with fuel injection pump

Fuel system

Make of fuel injection pump Roosa-
 Master (Includes mechanical fuel shut off)
 Make of injection nozzles.... Robert-Bosch
 Type of fuel No. 1-D or No. 2-D
 Diesel fuel (40 cetane minimum rating)
 Fuel filters..... Two-stage
 micronic-type

Electric operating system 12-volt

Electric starting system

Starting motor 12-volt
 Starting aid .. Glow plug for each cylinder
 actuated by push button
 on instrument panel

Air cleaner..... Dry-type filter
 with pre-cleaner screen

Batteries Two 12-volt, 91 ampere-
 hour, SAE 9H9 batteries;
 connected in parallel

PICKING UNITS

No. of Units 2
 No. of Picking Drums 4
 No. of Picker Bars (per unit)
 Front Drum 16
 Rear Drum 12
 No. of Spindles (per machine)
 Low Drum Picker 784
 High Drum Picker 1120

PICKING UNIT SPEEDS (All speeds determined
 with engine operating at approximately 2500 rpm
 rated speed under field load.)

Picking unit drive shaft

Low range 730 rpm
 High range 974 rpm

Picking Drums

Front Drum (16 Bar)

Low Range..... 70.4 rpm
 High Range 93.7 rpm

Rear Drum (12 Bar)

Low Range..... 93.9 rpm
 High Range 125.0 rpm

Doffer Shaft

For Front Drum (16 Bar)

Low Range 1136 rpm
 High Range..... 1512 rpm

For Rear Drum (12 Bar)

Low Range 1152 rpm
 High Range..... 1534 rpm

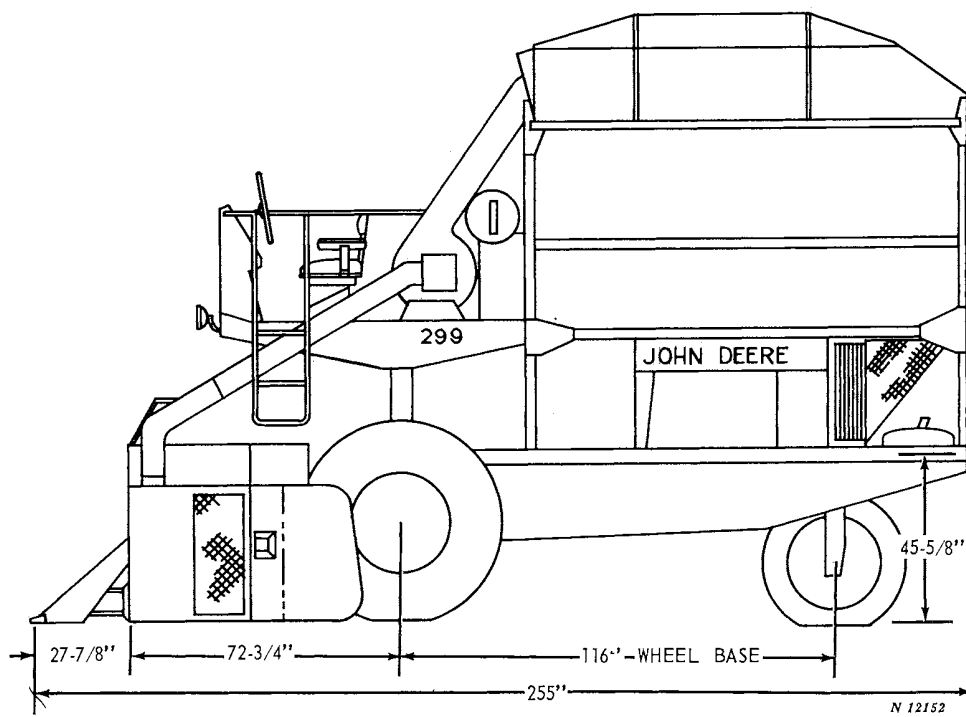
OPTIONAL EQUIPMENT

Gasoline, LP-Gas, or Diesel Engine
 Regular or High Lift Basket
 Low Profile Tires (18.4 x 26, 10-ply)
 Bar Tread Tires (18.4 x 26, 10-ply)
 Cane and Rice Tires (18.4 x 26, 10-ply)

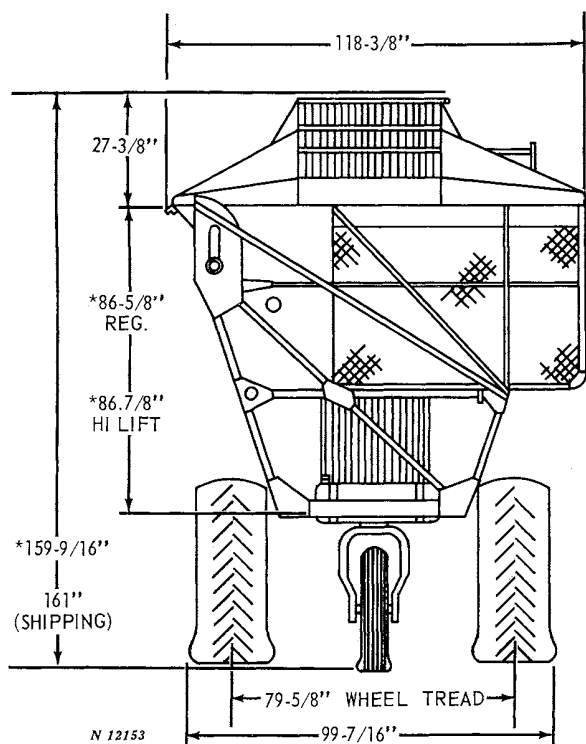
ATTACHMENTS

Tunnel Grids
 Pressure Plate Ribs
 Basket Extensions
 High-Lift Basket (Field Conversion)
 Warning Lamp
 Fan Drive Belt Shields
 Adapter for Roll-o-matic Wheel Assembly
 Restrictor Indicator for Engine Air Intake

DIMENSIONS



Left-Hand Side View of 299 Cotton Picker



Rear View of 299 Cotton Picker

GROUND CLEARANCE

Under Main Axle 33 inches

* Add 15 inches for picker equipped with basket extensions.

(Specifications and design subject to change without notice.)

Thank you so much for reading.
Please click the “Buy Now!”
button below to download the
complete manual.



After you pay.

You can download the most
perfect and complete manual in
the world immediately.

Our support email:

ebooklibonline@outlook.com