

# 499 AND 699 TWO-ROW COTTON PICKERS

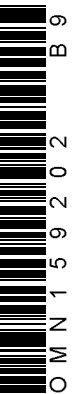


## OPERATORS MANUAL 499 AND 699 TWO-ROW COTTON PICKERS

OMN159202 B9 English

**OMN159202 B9**

LITHO IN THE U.S.A.  
ENGLISH



## TO THE PURCHASER

This manual has been carefully prepared and illustrated to show you what to do and when to do it. It explains the adjustments that are built into the machine and gives instructions on when and how to make these adjustments.

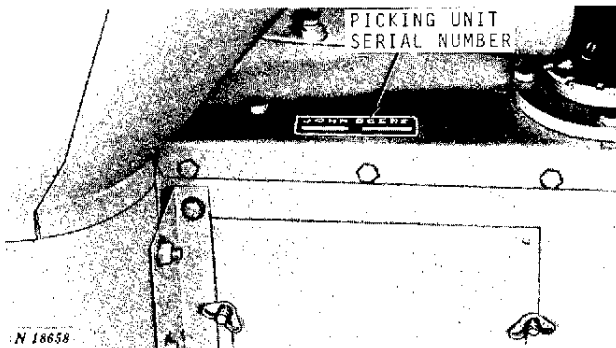
If you find you need information not covered in this manual or if your cotton picker requires special servicing, take advantage of the facilities offered by your John Deere dealer. He has trained mechanics, who are kept informed on the best methods of servicing and can give you prompt "know-how" service in the field.

Information concerning warranty on this cotton picker appears on your copy of the delivery receipt which you should have received from your dealer when the cotton picker was delivered to you.

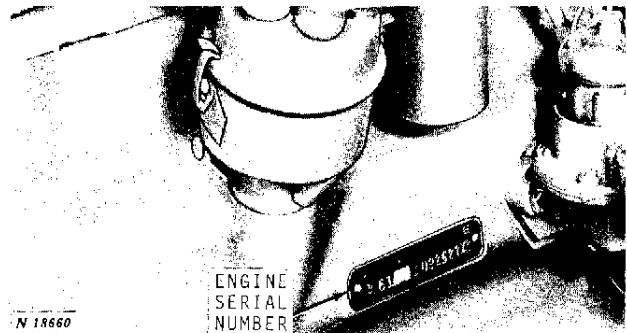
### LOCATION REFERENCE

Location references, "Right" and "Left," "Front" and "Rear" refer to the operator's "Right" or "Left" and "Front" or "Rear" when facing the same direction the cotton picker will travel when in use.

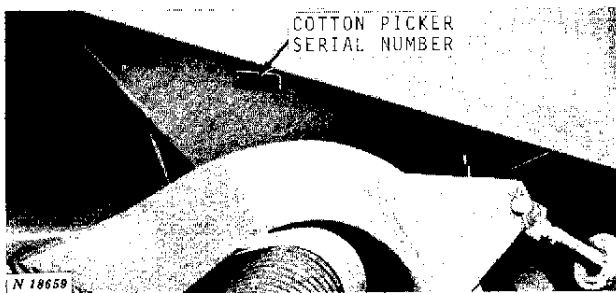
### SERIAL NUMBERS



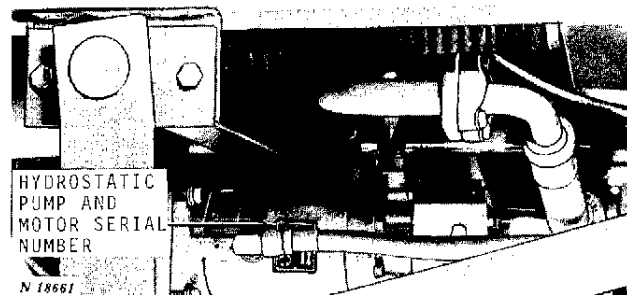
The picking unit serial numbers are on plates located on the top outer side of each unit.



The engine serial number is on a plate located on the left-hand side of the engine block.



The cotton picker serial number is on a plate located on the left-hand platform support.



The hydrostatic pump and motor serial numbers are on a plate located on the left-hand side of hydrostatic motor.



The cab serial number is on a plate located on the right-hand side of cab frame.

Write these serial numbers in the spaces below for handy reference later.

PICKER SERIAL NO. ....

ENGINE SERIAL NO. ....

R.H. PICKING UNIT SERIAL NO. ....

L.H. PICKING UNIT SERIAL NO. ....

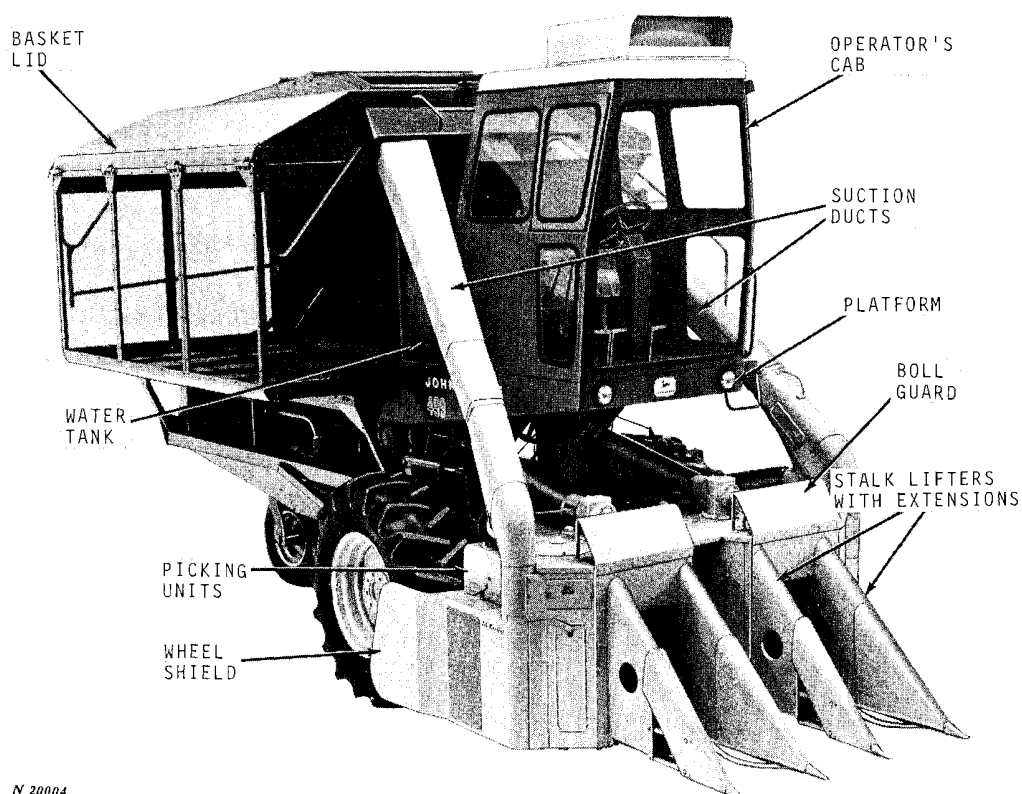
HYDROSTATIC MOTOR SERIAL NO. ....

HYDROSTATIC PUMP SERIAL NO. ....

CAB SERIAL NO. ....

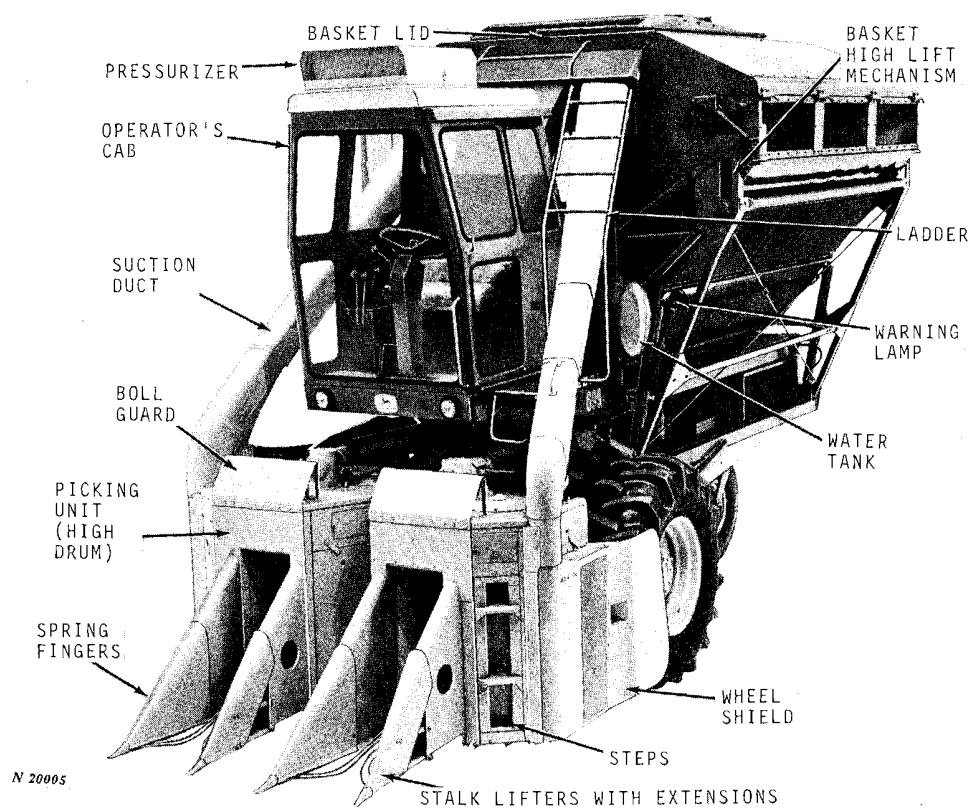
## CONTENTS

	Page
Specifications . . . . .	3-7
Description. . . . .	8-10
Controls and Instruments . . . . .	11-19
Operation. . . . .	19-35
Operating Adjustments . . . . .	36-51
Fuels and Lubricants . . . . .	51-55
Lubrication and Periodic Service . . . . .	56-80
Trouble Shooting . . . . .	81-100
Service . . . . .	101-119
Attachments . . . . .	120-121
Index. . . . .	122-124



N 20004

John Deere 499 Cotton Picker with Cab



N 20005

John Deere 699 Cotton Picker with Operator's Cab and High Lift



# SPECIFICATIONS

Description	499 Cotton Picker	699 Cotton Picker
ROW WIDTHS	38- or 40-Inch Rows	38- or 40-Inch Rows Adjustable
GROUND SPEEDS (Full Throttle)		
Picking Speeds		Standard Transmission
1st Gear	2.06 mph	2.06 mph
2nd Gear	2.65 mph	2.65 mph
3rd Gear	3.12 mph	3.12 mph
Transport Speeds		Hydrostatic Drive
4th Gear	8.12 mph	0 to 10.46 mph (3rd)
5th Gear	10.46 mph	0 to 12.32 mph (4th)
6th Gear	12.32 mph	0 to 6.16 mph
Reverse	3.25 mph	3.25 mph
CAPACITIES		
Cotton Basket	465 cu. ft. (2300 lbs. seed cotton)	608 cu. ft. (3000 lbs. seed cotton)
Fuel Tank		
Gasoline and Diesel	33 U.S. gal.	56 U.S. gal.
LP-Gas (80% Full)	39 U.S. gal.	43 U.S. gal.
Water Tank	61 U.S. gal.	64 U.S. gal.
Cooling System	28 U.S. qt.	28 U.S. qt.
Engine Crank Case	7 U.S. qt.	10 U.S. qt.
Hydraulic System		
Regular Lift	17 U.S. qt.	17 U.S. qt.
High Lift	19 U.S. qt.	19 U.S. qt.
Transmission	22 U.S. qt.	22 U.S. qt.
Final Drives	2 U.S. qt.	2 U.S. qt.
Hydrostatic Drive	.....	27 U.S. qt.
COOLING SYSTEM	Water Pressure Type	Water Pressure Type
SHIPPING WEIGHT		
High Drum Cotton Picker	.....	*13,300 lbs.
Low Drum Cotton Picker	*11,400 lbs.	*12,700 lbs.
<i>*With cab add 500 lbs.</i>		
TIRES		
Front Drive Wheels (R1, R2 & R3)	14.9 - 26, 8-ply 16.9 - 26, 8-ply (R1 only)	18.4 - 26, 10-ply
Rear Guide Wheel	9.50L - 15, 8-ply	11.00 - 16, 8-ply
PICKING UNITS		
Number of Units	2	2
Number of Picking Drums	4	4
Number of Picker Bars (Per Unit)		

#### 4 Specifications

Description	499 Cotton Picker	699 Cotton Picker	
PICKING UNITS Cont.			
Front Drum	16	16	
Rear Drum	12	12	
Number of Spindles (Per Machine)			
Low Drum	784	784	
High Drum	.....	1120	
PICKING UNIT SPEEDS (At Rated Engine Speeds)		Standard Transmission	Hydrostatic Drive
Picking Unit Drive Shaft			
*Low Range	784 rpm	784 rpm	None
*High Range	1046 rpm	1046 rpm	0 - 1046 rpm
Picking Drum			
Front Drum (16 Bar)			
*Low Range	70.4 rpm	70.4 rpm	None
*High Range	93.9 rpm	93.9 rpm	0 - 93.9 rpm
Rear Drum (12 Bar)			
*Low Range	93.8 rpm	93.8 rpm	None
*High Range	125.2 rpm	125.2 rpm	0 - 125.2 rpm
Doffer Shaft			
Front Drum (16 Bar)			
*Low Range	1135 rpm	1135 rpm	None
*High Range	1514 rpm	1514 rpm	0 - 1514 rpm
Rear Drum (12 Bar)			
*Low Range	1152 rpm	1152 rpm	None
*High Range	1537 rpm	1537 rpm	0 - 1537 rpm
Spindle			
Front Drum (16 Bar)			
*Low Range	2454 rpm	2454 rpm	None
*High Range	3274 rpm	3274 rpm	0 - 3274 rpm
Rear Drum (12 Bar)			
*Low Range	2418 rpm	2418 rpm	None
*High Range	3226 rpm	3226 rpm	0 - 3226 rpm

*\*On 499 and 699 Cotton Pickers (Standard Transmissions) there is a high and low picking unit range. On 699 Cotton Picker (Hydrostatic Drive) there is a high range only.*

ENGINE (Gasoline and LP-Gas)		
Make	John Deere	John Deere
Model		
Gasoline	NB217G	NB329G
LP-Gas	NB217L	NB329L
No. of Cylinders	6	6

Description	499 Cotton Picker	699 Cotton Picker
ENGINE (Gasoline and LP-Gas) Cont.		
Bore	3.62 in.	4.02 in.
Stroke	3.50 in.	4.33 in.
Displacement	217 cu. in.	329 cu.
Horsepower		
Gasoline	77 hp	105 hp
LP-Gas	77 hp	105 hp
Firing Order	1-5-3-6-2-4	1-5-3-6-2-4
Tappet Clearance		
Intake	0.012 in. (cold)	0.014 in.
Exhaust	0.018 in. (cold)	0.022 in. Gas
Compression Ratio		
Gasoline	7.9 to 1	8.1 to 1
LP-Gas	8.9 to 1	8.1 to 1
Electrical System	12-volt, generator, positive ground	12-volt, alternator, negative ground
Valve Location	Valve-in-head	Valve-in-head
Fuel System		
Carburetor	(Single up draft)	(Single up draft)
Type of Fuel	Regular Gasoline or LP-Gas	Regular Gasoline or LP-Gas
Oil Filter	Spin-on Full Flow	Spin-on Full Flow
Air Cleaner	Dry-type Filter with Pre-cleaner	Dry-type Filter with Pre-cleaner
Governor	Centrifugal Flyweight	Centrifugal Flyweight
Ignition System		
Coil Voltage	12-volt	12-volt
Spark Plug Gap		
Gasoline	0.025 in.	0.025 in.
LP-Gas	0.015 in.	0.015 - 0.018 in.
Distributor Point Gap		
Delco	0.016 in.	.....
Prestolite	0.020 in.	0.020 in.
Engine Speeds		
Fast Idle (no load)	2600 rpm	2660 rpm
Rated (under field load)	2500 rpm	2500 rpm
Slow Idle	600 rpm	600 to 800 rpm
ENGINE (Diesel)		
Make	.....	John Deere
Model	.....	NB329D
No. of Cylinders	.....	6
Bore	.....	4.02 in.
Stroke	.....	4.33 in.
Displacement	.....	329 cu. in.
Horsepower	.....	105 hp
Compression Ratio	.....	16.3 to 1
Tappet Clearance		
Intake	.....	0.014 in.
Exhaust	.....	0.018 in.
Valve Location	.....	Valve-in-head
Firing Order	.....	1-5-3-6-2-4
Governor	.....	Integral with fuel injection pump

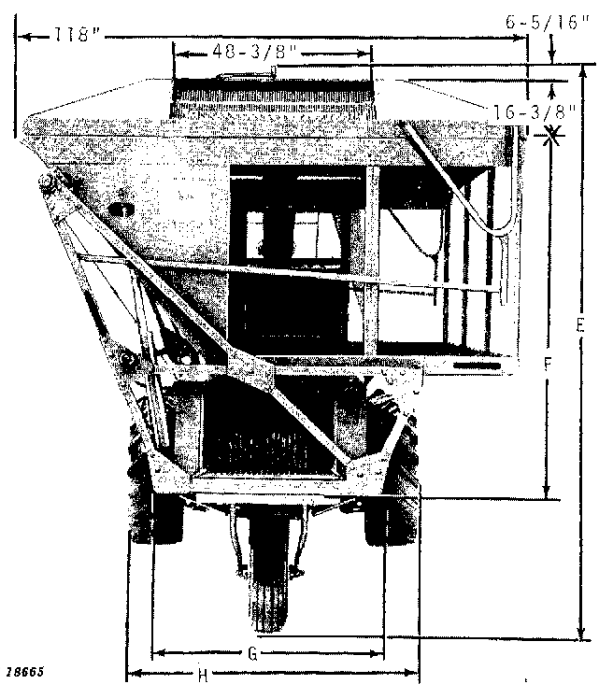
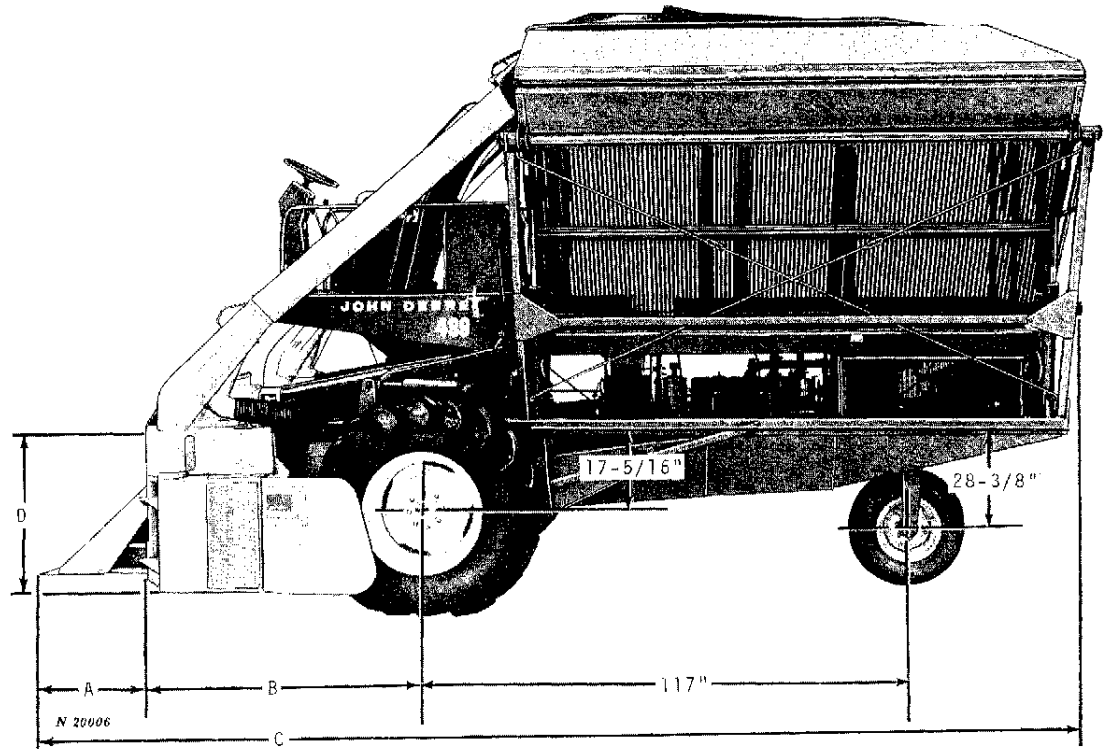
## 6 Specifications

Description	499 Cotton Picker	699 Cotton Picker
<b>ENGINE (Diesel) Cont.</b>		
Fuel System		
Make of Fuel Injection Pump	.....	Roosa Master
Make of Injection Nozzles	.....	Roosa Master
Type of Fuel	.....	No. 1-D or No. 2-D diesel fuel
Fuel Filters	.....	Two parallel elements
Electrical System	.....	12-volt, alternator, negative ground
Air Cleaner	.....	Dry type
Engine Speeds		
Fast Idle (no load)	.....	2660 rpm
Rated (under field load)	.....	2500 rpm
Slow Idle	.....	800 rpm
Oil Filter	.....	Spin-on, full-flow
<b>DIMENSIONS</b>		
Length		
High Drum	.....	22 feet 4 inches
Low Drum	21 feet 1 inch	21 feet 3 inches
Height	11 feet 9 inches	13 feet 3 inches
Width	9 feet 10 inches	9 feet 10 inches
Tread	6 feet 9 inches	6 feet 7-5/8 inches
<b>BASKET DUMPING HEIGHT</b>		
Lip		
Regular Lift	8 feet 7 inches	8 feet 9 inches
High Lift	9 feet 5 inches	9 feet 7 inches
Basket Pivot		
Regular Lift	9 feet 1 inch	9 feet 2-5/8 inches
High Lift	9 feet 11-3/8 inches	10 feet 1 inch
Under Axle Clearance	31 inches	33 inches
<b>HYDROSTATIC DRIVE</b>		
Make		
Variable Displacement Pump	.....	Sundstrand
Fixed Displacement Pump	.....	Sundstrand
Speed Range		
Type of Oil Filter	.....	Full flow
Type of Oil Cooler	.....	Air cooled
System Capacity	.....	27 U.S. qt.
Type of Oil	.....	Type "A" automatic transmission fluid
<b>OPTIONAL EQUIPMENT</b>		
Gasoline Engine	NB217G	NB329G
LP-Gas Engine	NB217L	NB329L
Diesel Engine	.....	NB329D
Hydrostatic Drive	.....	Sundstrand
Regular Lift Basket	Yes	Yes
High Lift Basket	Yes	Yes
Low Profile Tires	14.9 - 26, 8-ply	18.4 - 26, 10-ply
Bar Tread Tires	14.9 - 26, 8-ply or 16.9 - 26, 8-ply	18.4 - 26, 10-ply
Cane and Rice Tires	14.9 - 26, 8-ply	18.4 - 26, 10-ply



Description
ATTACHMENTS
Tunnel Grids
Adapter for Roll-O-Matic Wheel Assembly (699 Cotton Picker Only)
Pressure Plate Ribs
Trash Grates
Stalklifter Extensions (499 and 699L Cotton Picker Only)
Stalklifter Grates (499 and 699L Cotton Picker Only)
Operator's Cab (499 and 699 Cotton Pickers)

DIMENSIONS



Dimensional Chart			
	Dimension		
	499	699L	699H
A	*27-7/8"	*27-7/8"	40-7/8"
B	70-3/4"	72-3/4"	72-3/4"
C	253"	255"	268"
D	37-7/8"	37-7/8"	47-5/8"
E	**143-1/2"	162-5/16"	162-5/16"
F	79-3/16"	94-3/16"	94-3/16"
G	81"	79-5/8"	79-5/8"
H	97-7/16"	99-7/16"	99-7/16"

Under Axle Clearance  
499 Cotton Picker - 31 Inches  
699 Cotton Picker - 33 Inches  
\*With stalklifter extensions - 40-7/8"  
\*\*With cab Add 4-1/4 inches on 499 Cotton Picker only.  
(Specifications and design subject to change without notice.)

Thank you so much for reading.  
Please click the “Buy Now!”  
button below to download the  
complete manual.



After you pay.

You can download the most  
perfect and complete manual in  
the world immediately.

Our support email:

[ebooklibonline@outlook.com](mailto:ebooklibonline@outlook.com)