



10 CORN ATTACHMENT



JOHN DEERE

OPERATORS MANUAL 10 CORN ATTACHMENT

OMN36359 C9 English

OMN36359 C9

LITHO IN THE U.S.A.
ENGLISH



FORWARD

The purpose of this book is to give you useful information on how to operate your new John Deere 10 Corn Attachment in the many field and crop conditions under which corn is grown.

A corn attachment must be built to handle a wide range of conditions. Average conditions can be handled by the standard equipment with which corn attachment is shipped. However, unusual conditions may require some special equipment. Your new 10 Corn Attachment will do a type of work directly proportional to the amount of care you use in operating it.

Field conditions vary from year to year, from day to day, and even from hour to hour. Different varieties of corn present widely different picking problems. A careful study of adjustments on your corn attachment and what they accomplish under different conditions will allow you to reap many benefits and economies that a corn attachment can provide.

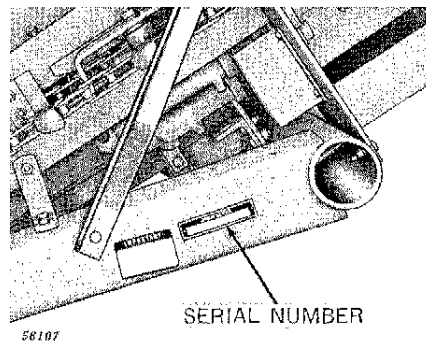
If you find you need information not covered in this manual, see your John Deere dealer. He has the latest information on how to get the best service from your corn attachment and can give you prompt "know-how" service in the field or in his shop.

When in need of parts, go to your John Deere dealer who carries genuine John Deere parts for your corn attachment. Be sure to give him the serial number of your corn attachment and the year purchased. This information should be recorded in the space provided on this page as soon as you have received your corn attachment.

Serial Number of This Corn Attachment Is:

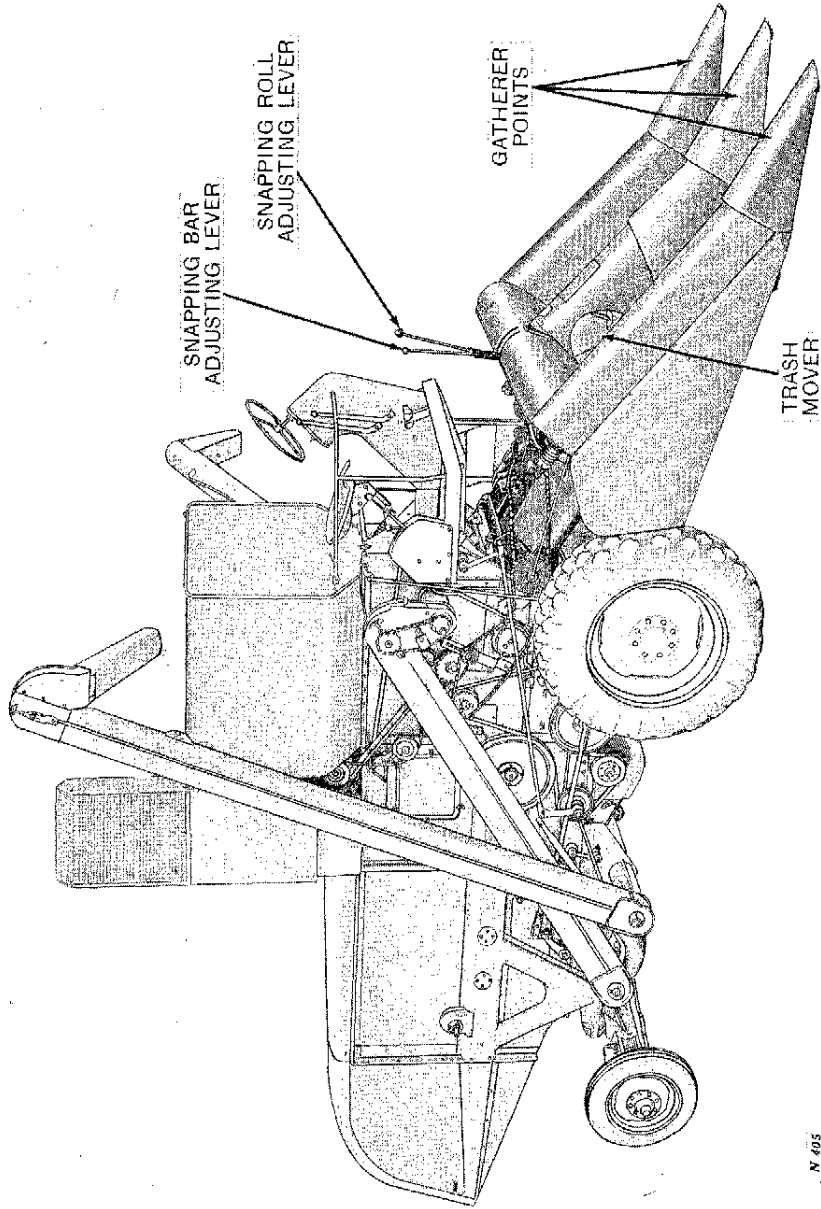
.....
Date Purchased

You will find the Serial Number Plate on the left-hand main frame as illustrated at the right.



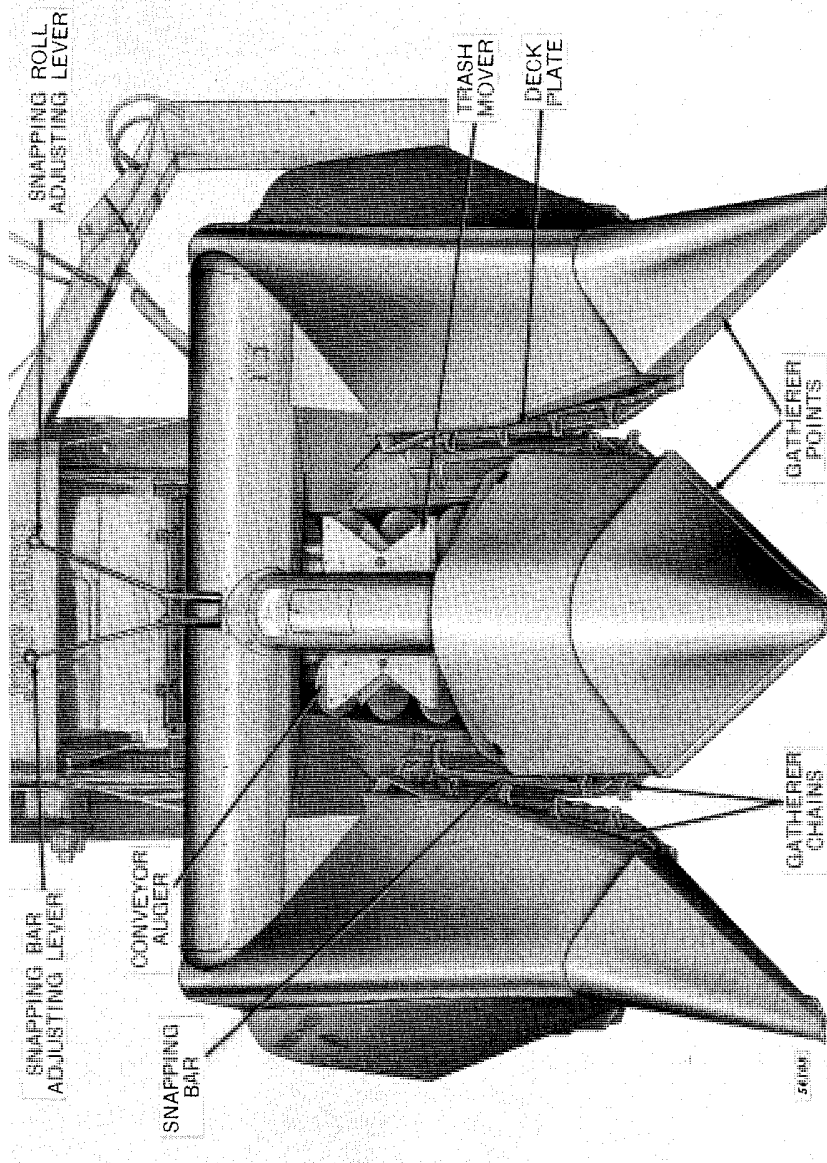
CONTENTS

	1
	<i>Page</i>
SPECIFICATIONS.....	4
LUBRICATION.....	5-11
OPERATION.....	12-27
General Instructions.....	12-13
Gatherers.....	14-15
Snapping Rolls.....	16
Snapping Roll Adjustment.....	17
Snapping Bar.....	17
Snapping Bar Adjustment.....	18
Outer Gatherer Chain Upper Idler and Stripper.....	19
Conveyor Auger.....	20
Trash Mover.....	20
Chains.....	21-22
Slip Clutches.....	23
Main Drive Sprockets and Combine Cylinder Speeds.....	24-25
Combine Concave-to-Cylinder Spacing.....	26
Safety Suggestions.....	26
Service—At the End of the Season.....	27
Service—At the Beginning of the Season.....	27
REMOVAL OF THE CORN ATTACHMENT.....	28-31
INSTALLATION OF THE CORN ATTACHMENT.....	32-37
PICKING DIFFICULTIES.....	38-42
EXTRA EQUIPMENT.....	43-45
Gatherer Extension Shields.....	43
Trash Knives.....	44
Trash Mover Extensions.....	45
Lug-Type Snapping Rolls.....	45
Stalk Lifter Gatherer Rods.....	46
SERVICE:	
Multi-Luber Quik-Lube System.....	47-48



*Right-Hand Side View of John Deere 10 Corn Attachment
on 45 Self-Propelled Combine*

N 405



Front View of John Deere 10 Corn
Attachment on 55 Combine

Thank you so much for reading.
Please click the “Buy Now!”
button below to download the
complete manual.



After you pay.

You can download the most
perfect and complete manual in
the world immediately.

Our support email:

ebooklibonline@outlook.com